

# Burr Ridge Executive Center

200 S. Frontage Road, Burr Ridge, Illinois



3,320 SF Available | Suite 106

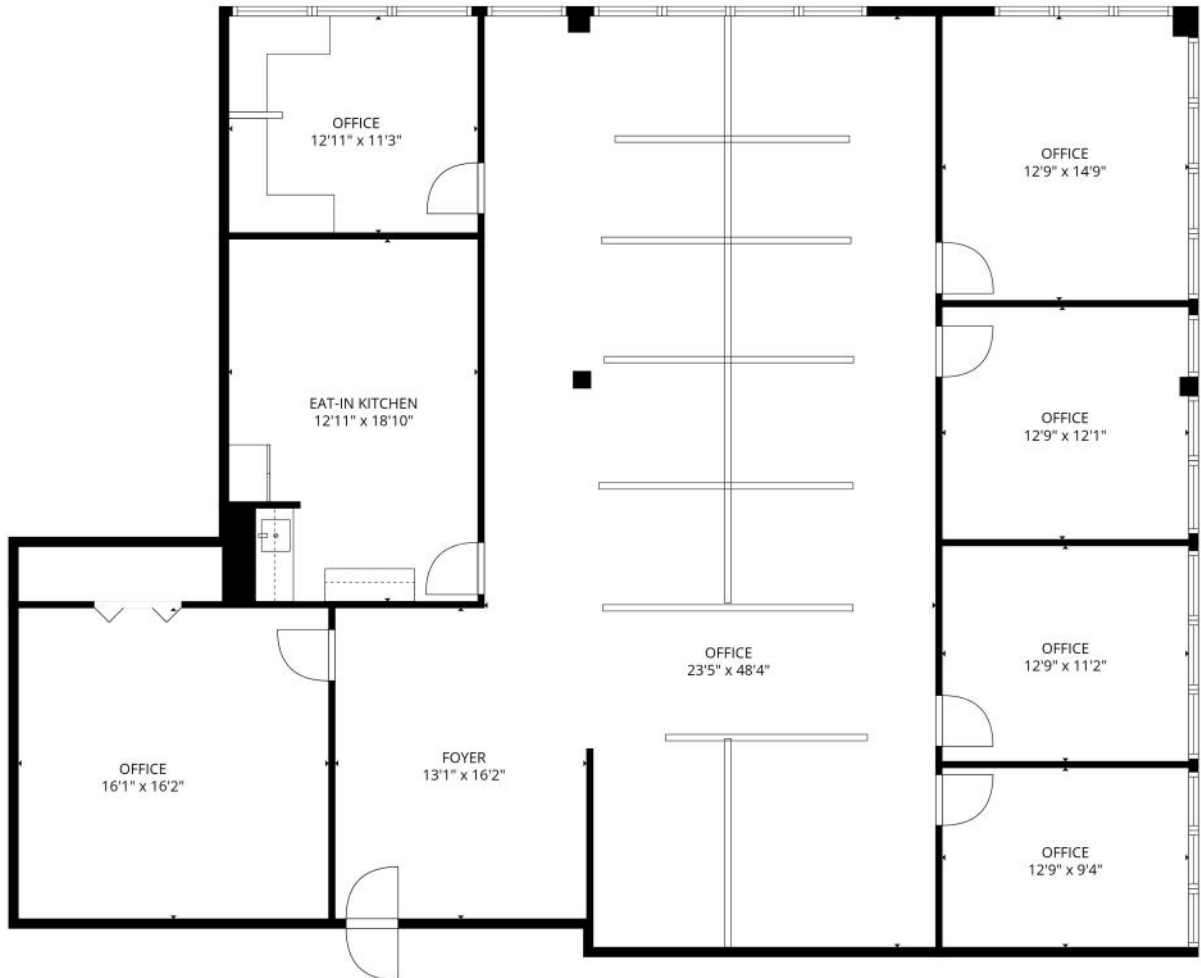
Renovated Lobby & Modern Common Areas  
3-Story Glass Executive Office Building  
Immediate I-55 & I-294 Access  
Minutes to Burr Ridge Village Center



FOR  
MORE  
INFORMATION:

**Theresa Schulz**  
Managing Broker  
630.737.1200  
tschulz@schulzproperties.com

# 3,320 SF Available | Suite 106



FOR  
MORE  
INFORMATION:

**Theresa Schulz**  
Managing Broker  
630.737.1200  
[tschulz@schulzproperties.com](mailto:tschulz@schulzproperties.com)