

FOR SALE

Excellent Investment Opportunity BURNSIDE TROLLEY BUILDING



4800 Meadows, Suite 300, Lake Oswego, OR
503.367.0516 | www.fg-cre.com



- 2705 E Burnside Street
Portland, OR 97214
- 16,597 SF office building
- Sale price: \$4,300,000
- NOI: \$270,650
- Cap rate: 6.3%
- Over half of the tenants
have been here 10+ years



FOR MORE INFORMATION:

Steve Hunker, Vice President/Broker

steve@fg-cre.com

FOR SALE

BURNSIDE TROLLEY BUILDING

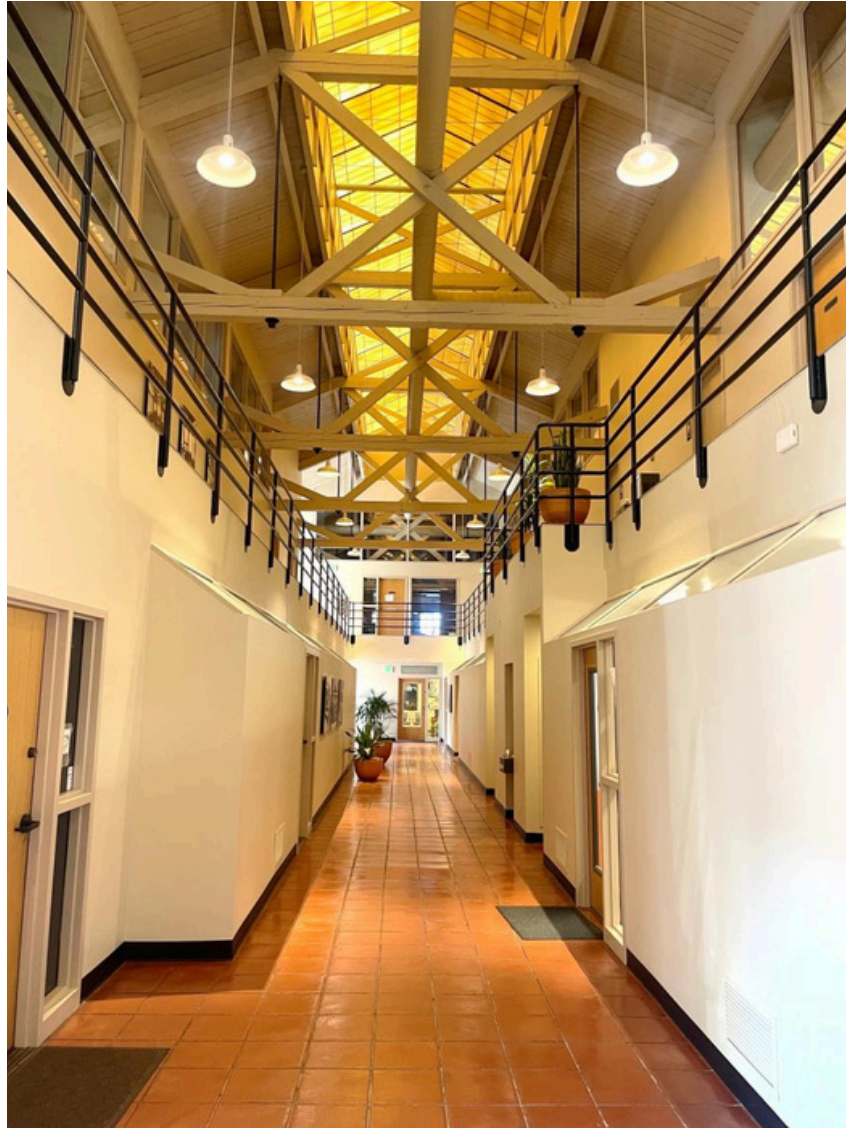
2705 E BURNSIDE ST | PORTLAND, OR 97214



4800 Meadows, Suite 300, Lake Oswego, OR
503.367.0516 | www.fg-cre.com



- 2-story building
- Elevator served
- Classic brick building exterior
- On site parking
- Ideal office space in close-in Portland, surrounded by amenities



FOR SALE

BURNSIDE TROLLEY BUILDING

2705 E BURNSIDE ST | PORTLAND, OR 97214



4800 Meadows, Suite 300, Lake Oswego, OR
503.367.0516 | www.fg-cre.com



On the National Register of Historic Places, Bay E served as a streetcar carbarn in the early 1950's.



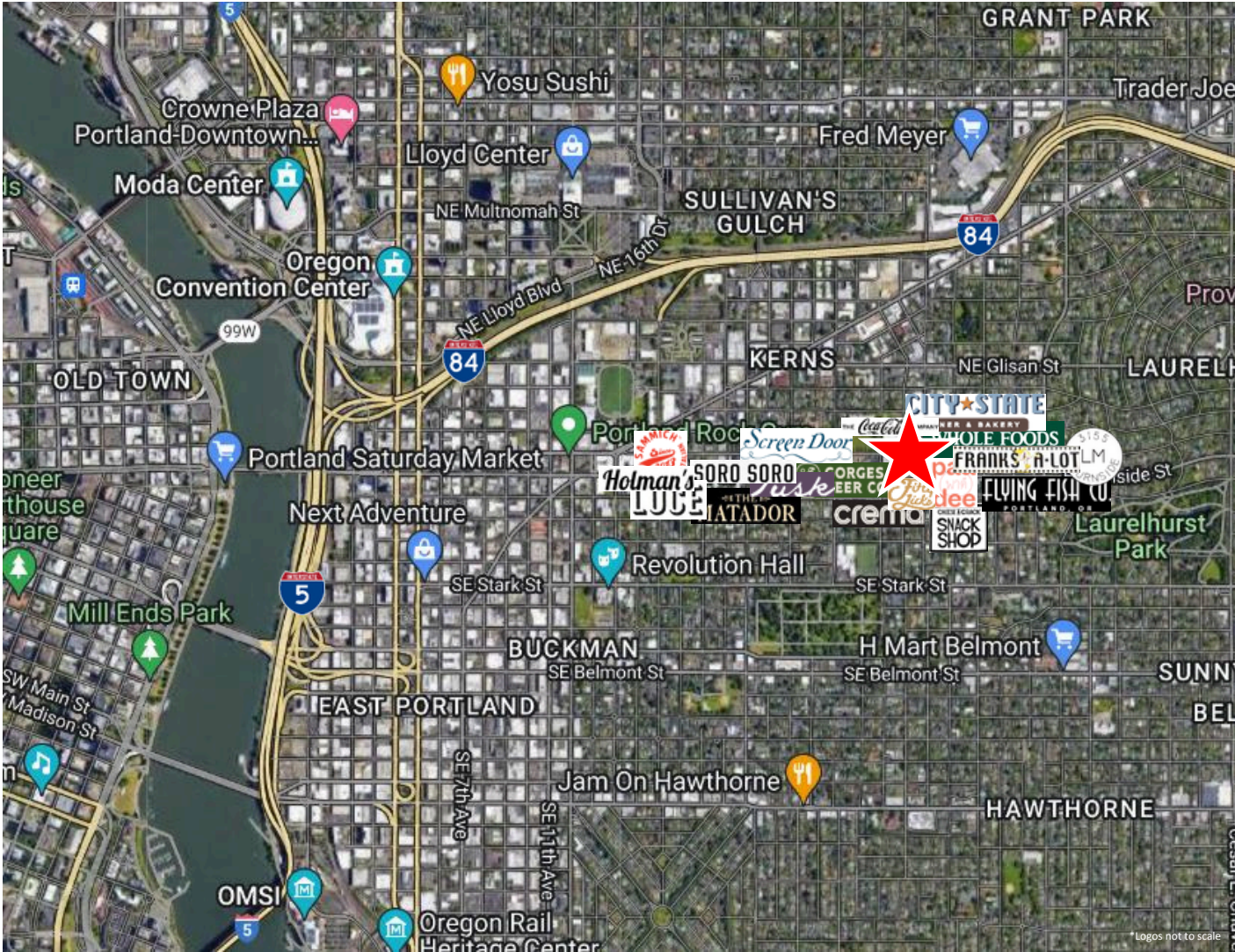
FOR SALE

BURNSIDE TROLLEY BUILDING

2705 E BURNSIDE ST | PORTLAND, OR 97214



4800 Meadows, Suite 300, Lake Oswego, OR
503.367.0516 | www.fg-cre.com



2023 DEMOGRAPHICS

	1 Mile	3 Mile	5 Mile
Est. Population	35,640	253,962	468,789
2028 Projected Population	36,041	255,599	468,403
Est. Average Household Income	\$102,354	\$106,740	\$106,936
Est. Total Employees	25,238	329,826	447,264

Average Daily Traffic

E Burnside St @ SE 28th Ave E – 18,473
NE 28th Ave @ NE Couch St N – 6,348 E
Burnside St @ NE 29th Ave E – 17,982

This statement with the information it contains is given with the understanding that all the negotiations relating to the purchase, rental or leasing of the property described above shall be conducted through this office. The above information, while not guaranteed, has been secured from sources we believe to be reliable.