

HIGHWOODS BAY CENTER I

5426 Bay Center Drive | Tampa, FL

SUBLEASE OPPORTUNITY



Up to **±8,522 SF** Available

A Convenient Business Enclave Along Westshore's Quiet Waterfront





Highlights

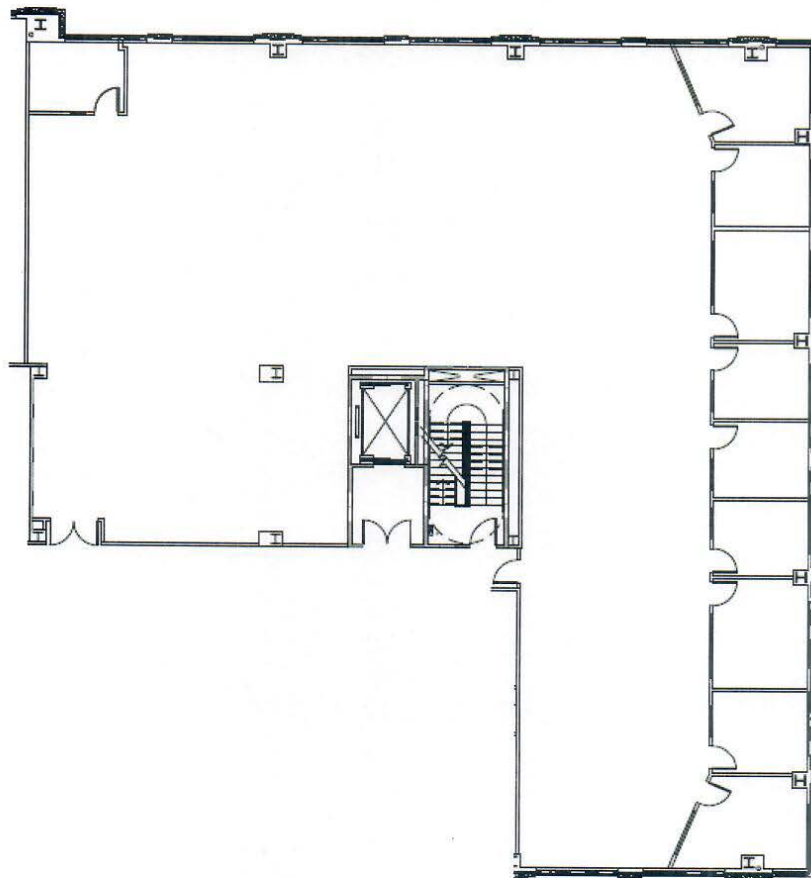
- 7-story, Class A Office Building
- Onsite Amenities
 - » Bay Center Café
 - » Fitness Center with Showers
- Loading Dock
- 24-Hour Security
- Onsite Maintenance
- Lease Expiration: 4/30/2026



Availability

SUITE 480

8,522 RSF





HIGHWOODS BAY CENTER I

5426 Bay Center Drive | Tampa, FL

For more information, please contact:

SCOTT GARLICK

Managing Principal

813 204 5310

scott.garlick@cushwake.com



One Tampa City Center, Suite 3300
Tampa, FL 33602

©2022 Cushman & Wakefield. All rights reserved. The information contained in this communication is strictly confidential. This information has been obtained from sources believed to be reliable but has not been verified. NO WARRANTY OR REPRESENTATION, EXPRESS OR IMPLIED, IS MADE AS TO THE CONDITION OF THE PROPERTY (OR PROPERTIES) REFERENCED HEREIN OR AS TO THE ACCURACY OR COMPLETENESS OF THE INFORMATION CONTAINED HEREIN, AND SAME IS SUBMITTED SUBJECT TO ERRORS, OMISSIONS, CHANGE OF PRICE, RENTAL OR OTHER CONDITIONS, WITHDRAWAL WITHOUT NOTICE, AND TO ANY SPECIAL LISTING CONDITIONS IMPOSED BY THE PROPERTY OWNER(S). ANY PROJECTIONS, OPINIONS OR ESTIMATES ARE SUBJECT TO UNCERTAINTY AND DO NOT SIGNIFY CURRENT OR FUTURE PROPERTY PERFORMANCE.