



# THE DAVPART PORTFOLIO

25 ADELAIDE STREET E. • 372 BAY STREET • 67 YONGE STREET

PLEASE CONTACT:

**CLARKE STRUTHERS\***

Vice President

**416 359 2451**

[Clarke.Struthers@cushwake.com](mailto:Clarke.Struthers@cushwake.com)

**RILEY LITTLEJOHN\***

Associate

**416 359 2444**

[Riley.Littlejohn@cushwake.com](mailto:Riley.Littlejohn@cushwake.com)

**Cushman & Wakefield ULC, Brokerage**

161 Bay Street, Suite 1500 P.O. Box 602

Toronto, ON M5J 2S1

[www.cushmanwakefield.com](http://www.cushmanwakefield.com)



## 25 ADELAIDE ST. E.

## 372 BAY ST.

## 67 YONGE ST.

### 25 ADELAIDE ST. E.

<b>Suite 300:</b>	7,730 SF	Available Immediately
<b>Suite 502:</b>	2,331 SF	Available Immediately
<b>Suite 700:</b>	2,902 SF	<b>Model Suite</b>
<b>Suite 710:</b>	832 SF	Available Immediately
<b>Suite 720:</b>	1,572 SF	Available Immediately
<b>Suite 801:</b>	5,083 SF	Available Immediately
<b>Suite 820:</b>	1,145 SF	Available Immediately
<b>Suite 915:</b>	1,733 SF	Available Immediately
<b>Suite 1020:</b>	736 SF	Available Immediately
<b>Suite 1100:</b>	2,615 SF	Available Immediately
<b>Suite 1310:</b>	1,182 SF	Available Immediately
<b>Suite 1315:</b>	1,156 SF	Available Immediately
<b>Suite 1417:</b>	1,490 SF	Available Immediately
<b>Suite 1514:</b>	378 SF	Available Immediately
<b>Suite 1519:</b>	723 SF	Available Immediately
<b>Suite 1602:</b>	2,758 SF	Available Immediately
<b>Suite 1800:</b>	7,742 SF	Available Immediately
<b>Suite 1917:</b>	1,468 SF	Available Immediately
<b>20th Floor:</b>	7,738 SF	July 1, 2023

} *\*Contiguous  
to 2,338 SF*

### 372 BAY ST.

<b>Suite 300:</b>	1,980 SF	Available in 90 days
<b>Suite 302:</b>	1,492 SF	Available Immediately (Sublease to Sept. 30, 2024)
<b>Suite 400:</b>	669 SF	Available Immediately
<b>Suite 401:</b>	605 SF	Available Immediately
<b>Suite 500:</b>	3,849 SF	Available Immediately (Full fifth floor can be made available for a total of 4,936 SF)
<b>Suite 506:</b>	1,118 SF	Available Immediately
<b>Suite 700:</b>	2,573 SF	Available Immediately
<b>Suite 800:</b>	4,935 SF	Available Immediately
<b>Suite 1200:</b>	2,586 SF	<b>Model Suite</b>
<b>Suite 1702:</b>	1,453 SF	Available Immediately
<b>Suite 1800:</b>	4,678 SF	Available Immediately

### 67 YONGE ST.

<b>Suite 501:</b>	1,362 SF	Available Immediately
<b>Suite 600:</b>	2,182 SF	Available Immediately
<b>Suite 700:</b>	2,886 SF	Available Immediately
<b>Suite 801:</b>	1,390 SF	Available Immediately
<b>Suite 804:</b>	1,961 SF	Available Immediately
<b>Suite 810:</b>	2,428 SF	Available Immediately
<b>Suite 903:</b>	1,611 SF	Available Immediately
<b>Suite 1201:</b>	1,390 SF	Available Immediately *Sublease
<b>Suite 1500:</b>	2,096 SF	Available Immediately
<b>Suite 1600:</b>	7,945 SF	<b>Potential Model Suite</b>

#### CLARKE STRUTHERS\*

Vice President  
**416 359 2451**  
Clarke.Struthers@cushwake.com

#### RILEY LITTLEJOHN\*

Associate  
**416 359 2444**  
Riley.Littlejohn@cushwake.com

#### Cushman & Wakefield ULC, Brokerage

161 Bay Street, Suite 1500 P.O. Box 602  
Toronto, ON M5J 2S1  
www.cushmanwakefield.com






## 25 ADELAIDE ST. E.



## DAVPART PORTFOLIO CUSHMAN & WAKEFIELD

### Availability

Suite	SF	Description	
300	7,730	Available Immediately	<a href="#">Click to download photos</a> 
502	2,331	Available Immediately	<a href="#">Click to download photos</a> 
700	2,902	<b>Model Suite</b>	<a href="#">Click to download photos</a>
710	832	Available Immediately	
720	1,572	Available Immediately	
801	5,083	Available Immediately	
820	1,145	Available Immediately	
915	1,733	Available Immediately	
1020	736	Available Immediately	
1100	2,615	Available Immediately	
1310	1,182	Available Immediately	
1315	1,156	Available Immediately	<i>*Contiguous to 2,338 SF (Suite 1310 &amp; 1315)</i> 
1417	1,490	Available Immediately	
1514	378	Available Immediately	
1519	733	Available Immediately	
1602	2,758	Available Immediately	
1800	7,742	Available Immediately	
1917	1,468	Available Immediately	
20th Floor	7,738	July 1, 2023	

**Net Rent** \$32.00 PSF **Additional Rent** \$21.29 PSF (est. 2023) **Term** 3 - 10 years

PLEASE CONTACT:

**CLARKE STRUTHERS\***

Vice President  
416 359 2451  
Clarke.Struthers@cushwake.com

**RILEY LITTLEJOHN\***

Associate  
416 359 2444  
Riley.Littlejohn@cushwake.com

**Cushman & Wakefield ULC, Brokerage**

161 Bay Street, Suite 1500 P.O. Box 602  
Toronto, ON M5J 2S1  
www.cushmanwakefield.com

# 25 ADELAIDE ST. E.

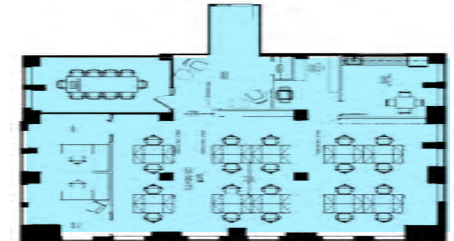


## DAVPART PORTFOLIO CUSHMAN & WAKEFIELD

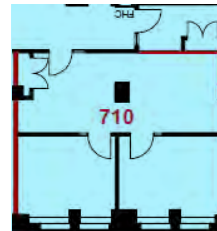
Suite 300 - 7,730 SF



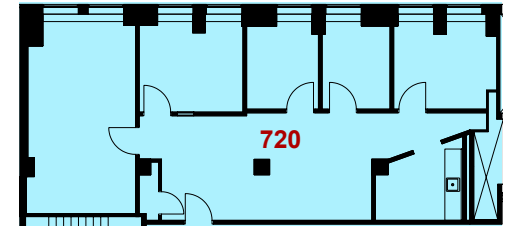
Suite 700 - 2,902 SF (Model Suite)



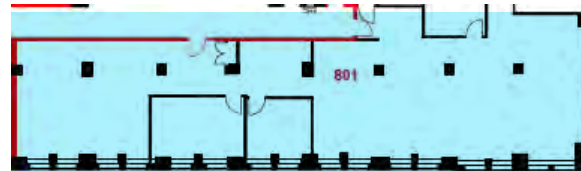
Suite 710 - 832 SF



Suite 720 - 1,572 SF



Suite 801 - 5,083 SF



PLEASE CONTACT:

**CLARKE STRUTHERS\***

Vice President

**416 359 2451**

Clarke.Struthers@cushwake.com

**RILEY LITTLEJOHN\***

Associate

**416 359 2444**

Riley.Littlejohn@cushwake.com

**Cushman & Wakefield ULC, Brokerage**

161 Bay Street, Suite 1500 P.O. Box 602

Toronto, ON M5J 2S1

www.cushmanwakefield.com

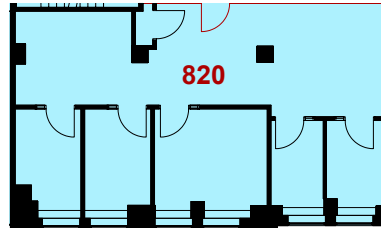


# 25 ADELAIDE ST. E.

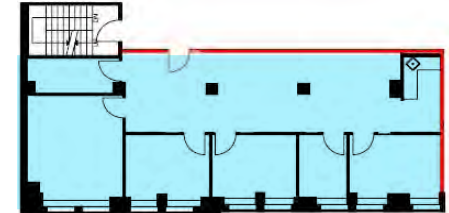


## DAVPART PORTFOLIO CUSHMAN & WAKEFIELD

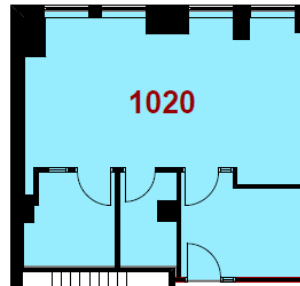
Suite 820 - 1,145 SF



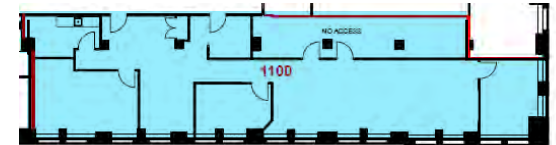
Suite 915 - 1,733 SF



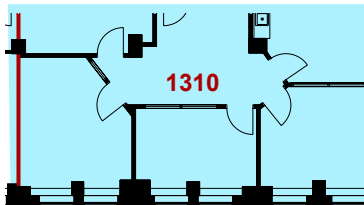
Suite 1020 - 736 SF



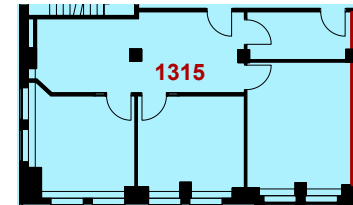
Suite 1100 - 2,615 SF



Suite 1310 - 1,182 SF



Suite 1315 - 1,156 SF



(Suite 1310 & 1315 can be made contiguous to a total of 2,338 SF)

PLEASE CONTACT:

**CLARKE STRUTHERS\***

Vice President

**416 359 2451**

Clarke.Struthers@cushwake.com

**RILEY LITTLEJOHN\***

Associate

**416 359 2444**

Riley.Littlejohn@cushwake.com

**Cushman & Wakefield ULC, Brokerage**

161 Bay Street, Suite 1500 P.O. Box 602

Toronto, ON M5J 2S1

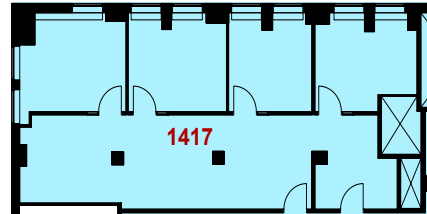
www.cushmanwakefield.com

# 25 ADELAIDE ST. E.

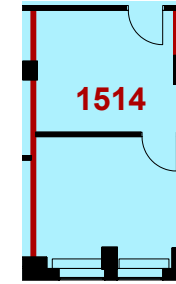


## DAVPART PORTFOLIO CUSHMAN & WAKEFIELD

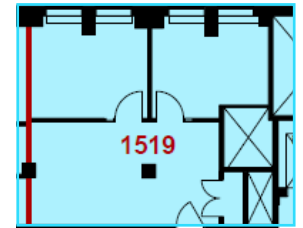
Suite 1417 - 1,490 SF



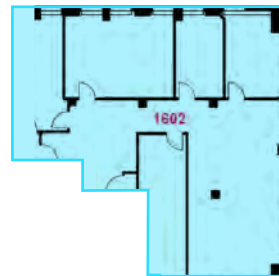
Suite 1514 - 378 SF



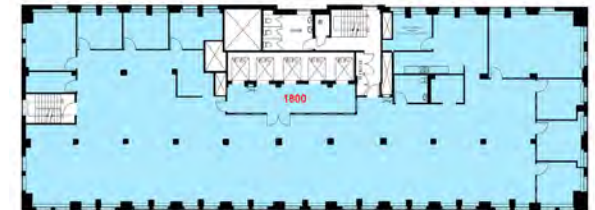
Suite 1519 - 733 SF



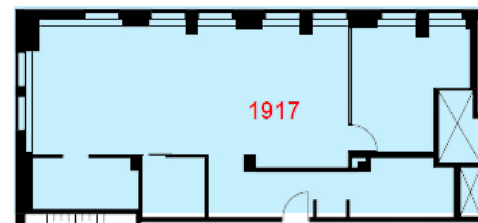
Suite 1602 - 2,758 SF



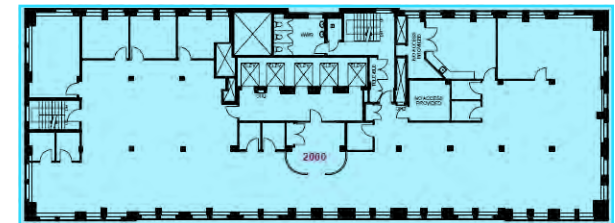
Suite 1800 - 7,742 SF



Suite 1917 - 1,468 SF



20th Floor - 7,738 SF



PLEASE CONTACT:

**CLARKE STRUTHERS\***

Vice President

**416 359 2451**

Clarke.Struthers@cushwake.com

**RILEY LITTLEJOHN\***

Associate

**416 359 2444**

Riley.Littlejohn@cushwake.com

**Cushman & Wakefield ULC, Brokerage**

161 Bay Street, Suite 1500 P.O. Box 602

Toronto, ON M5J 2S1


www.cushmanwakefield.com



## 372 BAY ST.



## Availability

Suite	SF	Description	
300	1,980	Available in 90 days	
302	1,492	Available Immediately	(Sublease to September 30, 2024)
400	669	Available Immediately	
401	605	Available Immediately	
500	3,849	Available Immediately	(Full fifth floor can be made available for a total of 4,936 SF)
506	1,118	Available Immediately	
700	2,573	Available Immediately	<a href="#">Click to download photos</a>
800	4,935	Available Immediately	<a href="#">Click to download photos</a>
1200	2,586	<b>Model Suite</b>	<a href="#">Click to download photos</a>
1702	1,453	Available Immediately	
1800	4,678	Available Immediately	<a href="#">Click to download photos</a> 

**Net Rent** \$32.00 PSF **Additional Rent** \$22.77 PSF (est. 2023) **Term** 3 - 10 years

PLEASE CONTACT:

**CLARKE STRUTHERS\***

Vice President

**416 359 2451**

Clarke.Struthers@cushwake.com

**RILEY LITTLEJOHN\***

Associate

**416 359 2444**

Riley.Littlejohn@cushwake.com

**Cushman & Wakefield ULC, Brokerage**

161 Bay Street, Suite 1500 P.O. Box 602

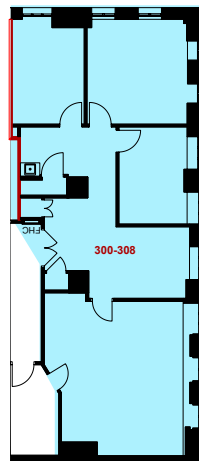
Toronto, ON M5J 2S1

www.cushmanwakefield.com

# 372 BAY ST.



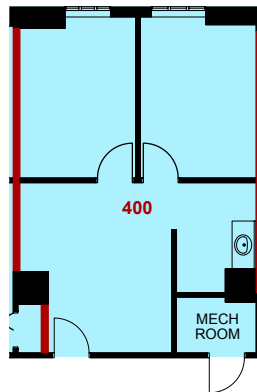
Suite 300 - 1,980 SF



Suite 302 - 1,492 SF



Suite 400 - 669 SF



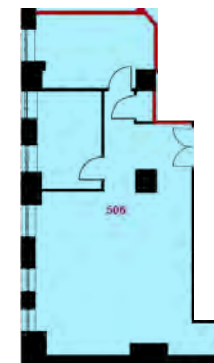
Suite 401 - 605 SF



Suite 500 - 3,849 SF



Suite 506 - 1,118 SF



**DAVPART PORTFOLIO**  
CUSHMAN & WAKEFIELD

PLEASE CONTACT:

**CLARKE STRUTHERS\***

Vice President

**416 359 2451**

Clarke.Struthers@cushwake.com

**RILEY LITTLEJOHN\***

Associate

**416 359 2444**

Riley.Littlejohn@cushwake.com

**Cushman & Wakefield ULC, Brokerage**

161 Bay Street, Suite 1500 P.O. Box 602

Toronto, ON M5J 2S1

www.cushmanwakefield.com

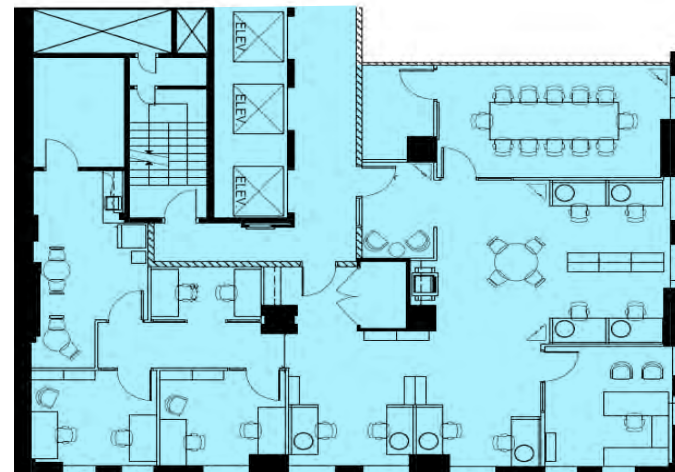


# 372 BAY ST.

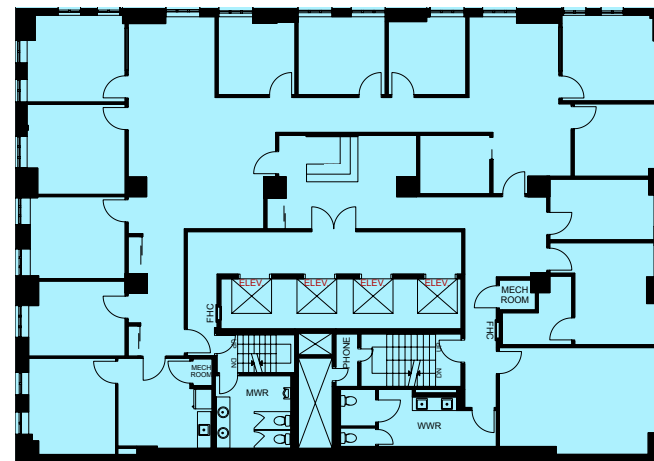


## DAVPART PORTFOLIO CUSHMAN & WAKEFIELD

Suite 700 - 2,573 SF



Suite 800 - 4,935 SF



PLEASE CONTACT:

**CLARKE STRUTHERS\***

Vice President

**416 359 2451**

Clarke.Struthers@cushwake.com

**RILEY LITTLEJOHN\***

Associate

**416 359 2444**

Riley.Littlejohn@cushwake.com

**Cushman & Wakefield ULC, Brokerage**

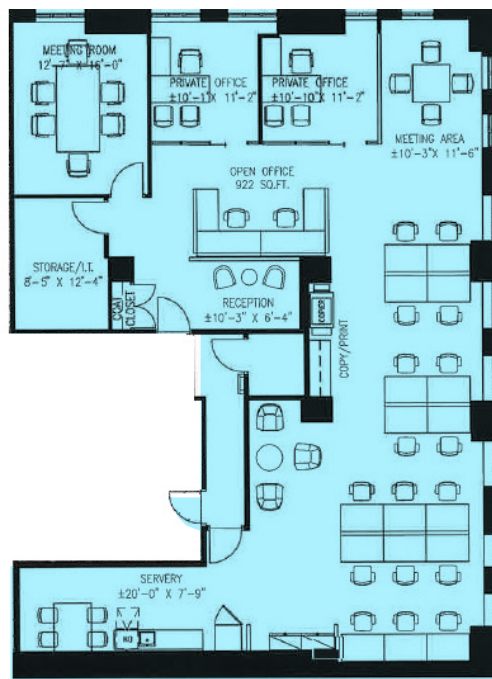
161 Bay Street, Suite 1500 P.O. Box 602

Toronto, ON M5J 2S1

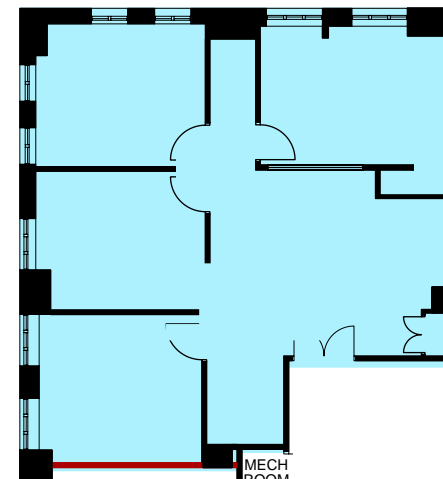
www.cushmanwakefield.com



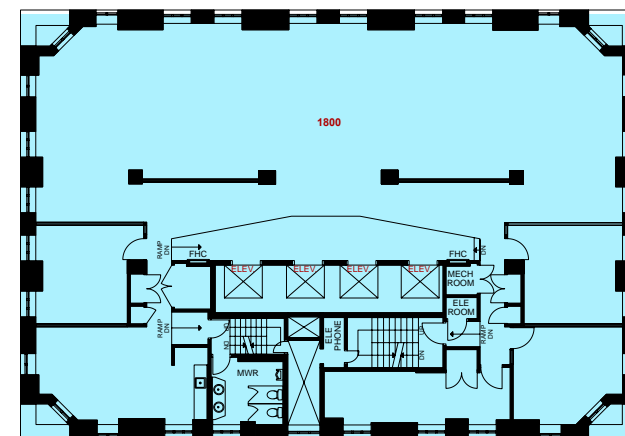
Suite 1200 - 2,586 SF (Model Suite)



Suite 1702 - 1,453 SF



Suite 1800 - 4,678 SF




Associate  
**416 359 2444**  
Riley.Littlejohn@cushwake.com

161 Bay Street, Suite 1500 P.O. Box 602  
Toronto, ON M5J 2S1  
[www.cushmanwakefield.com](http://www.cushmanwakefield.com)



# 67 YONGE ST.

## Availability

Suite	SF	Description
600	2,182	Available Immediately
700	2,886	Available Immediately <a href="#">Click to download photos</a>
801	1,390	Available Immediately
804	1,961	Available Immediately
810	2,428	Available Immediately <a href="#">Click to download photos</a> 
903	1,611	Available Immediately
1201	1,390	Available Immediately *Sublease
1500	2,096	Available Immediately <a href="#">Click to download photos</a>
1600	7,945	<b>Potential Model Suite</b>

**Net Rent** \$32.00 PSF **Additional Rent** \$22.44 PSF (est. 2023) **Term** 3 - 10 years

### PLEASE CONTACT:

#### CLARKE STRUTHERS\*

Vice President  
**416 359 2451**  
[Clarke.Struthers@cushwake.com](mailto:Clarke.Struthers@cushwake.com)

#### RILEY LITTLEJOHN\*

Associate  
**416 359 2444**  
[Riley.Littlejohn@cushwake.com](mailto:Riley.Littlejohn@cushwake.com)

#### Cushman & Wakefield ULC, Brokerage

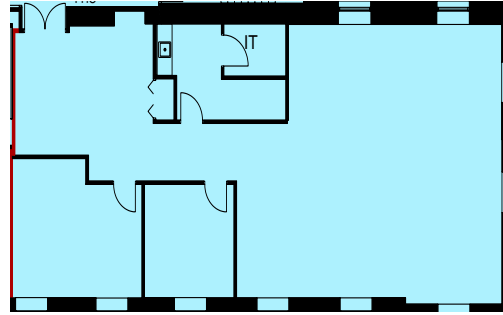
161 Bay Street, Suite 1500 P.O. Box 602  
 Toronto, ON M5J 2S1  
[www.cushmanwakefield.com](http://www.cushmanwakefield.com)

# 67 YONGE ST.

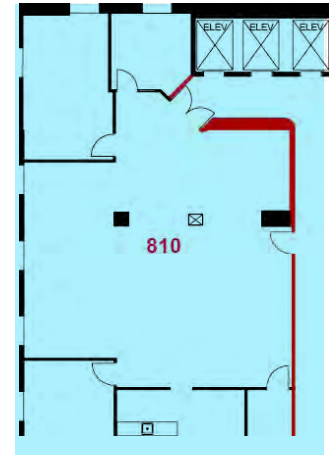


## DAVPART PORTFOLIO CUSHMAN & WAKEFIELD

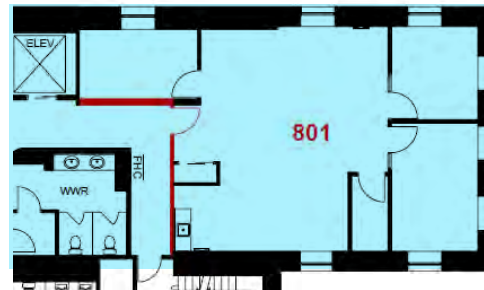
Suite 600 - 2,182 SF



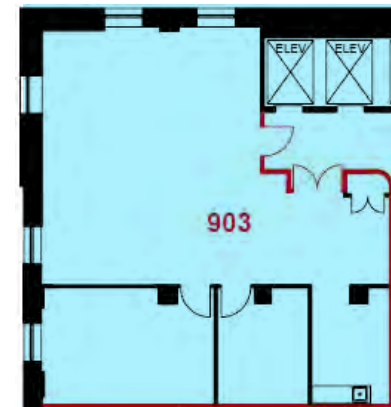
Suite 700 - 2,886 SF Suite 810 - 2,428 SF



Suite 801 - 1,390 SF



Suite 903 - 1,611 SF



Suite 804 - 1,961 SF



### PLEASE CONTACT:

#### CLARKE STRUTHERS\*

Vice President  
**416 359 2451**  
Clarke.Struthers@cushwake.com

#### RILEY LITTLEJOHN\*

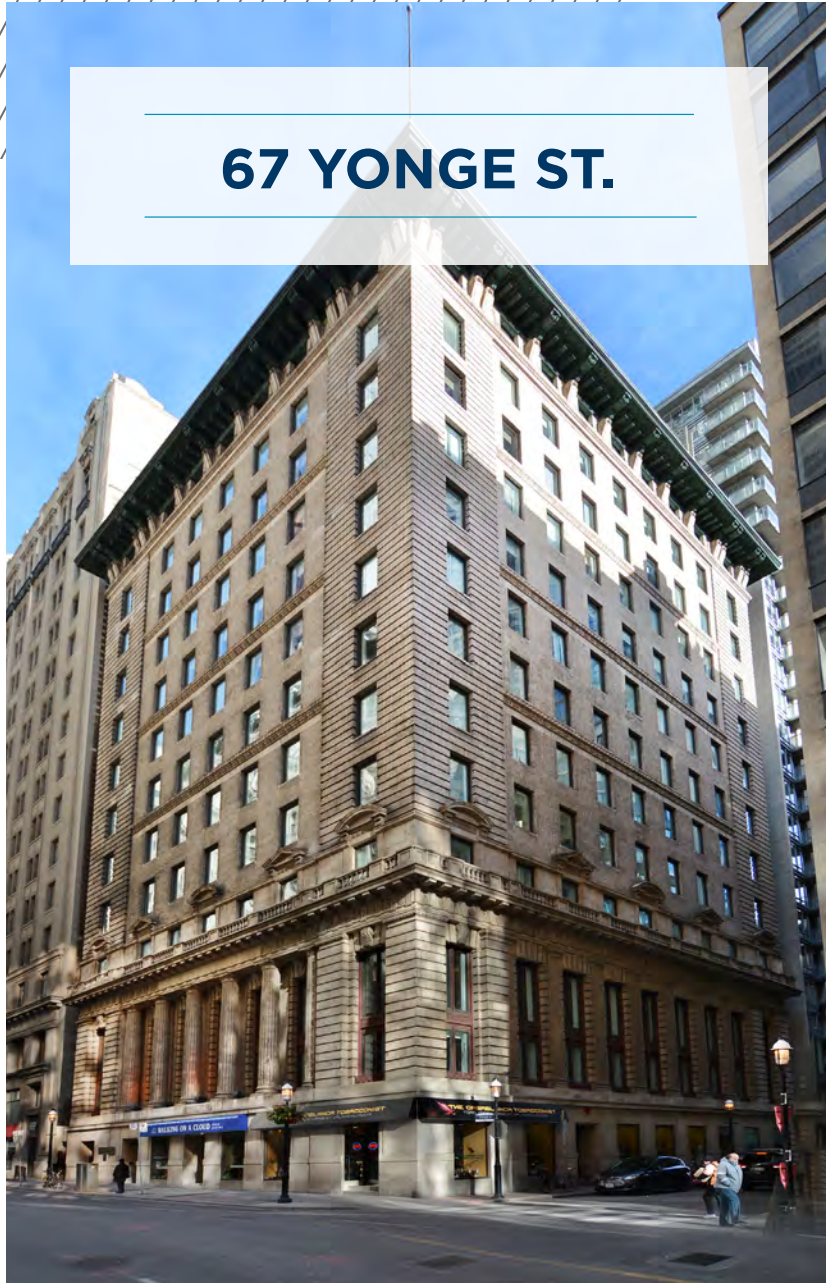
Associate  
**416 359 2444**  
Riley.Littlejohn@cushwake.com

#### Cushman & Wakefield ULC, Brokerage

161 Bay Street, Suite 1500 P.O. Box 602  
Toronto, ON M5J 2S1  
[www.cushmanwakefield.com](http://www.cushmanwakefield.com)

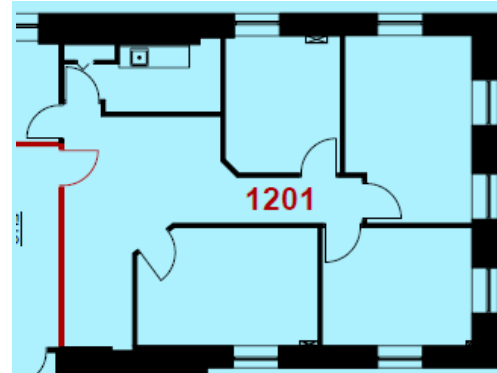


# 67 YONGE ST.

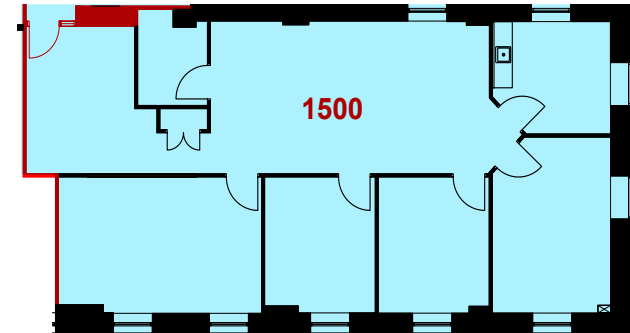


## DAVPART PORTFOLIO CUSHMAN & WAKEFIELD

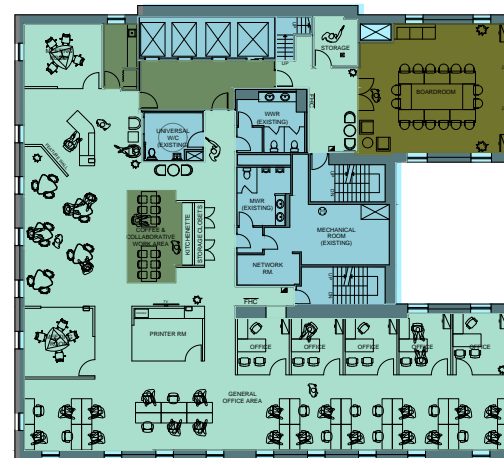
Suite 1201 - 1,390 SF



Suite 1500 - 2,096 SF



Suite 1600 - 7,945 SF (Potential Model Suite)



PLEASE CONTACT:

**CLARKE STRUTHERS\***

Vice President

**416 359 2451**

Clarke.Struthers@cushwake.com

**RILEY LITTLEJOHN\***

Associate

**416 359 2444**

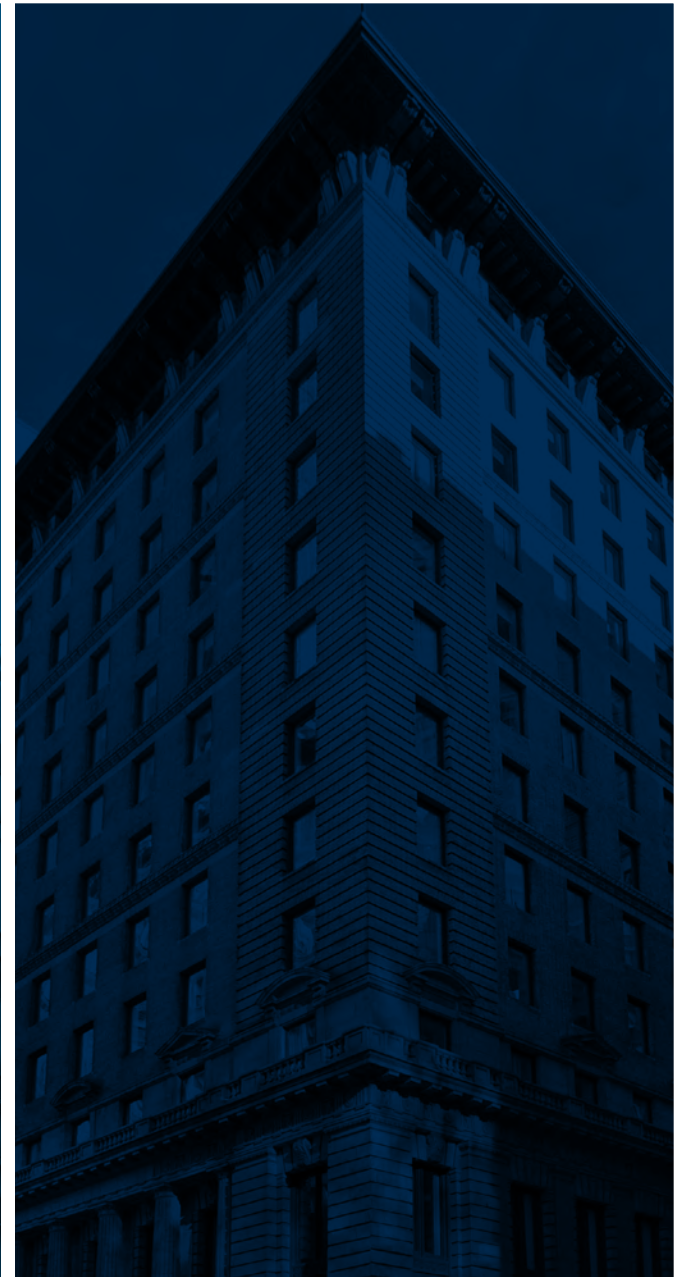
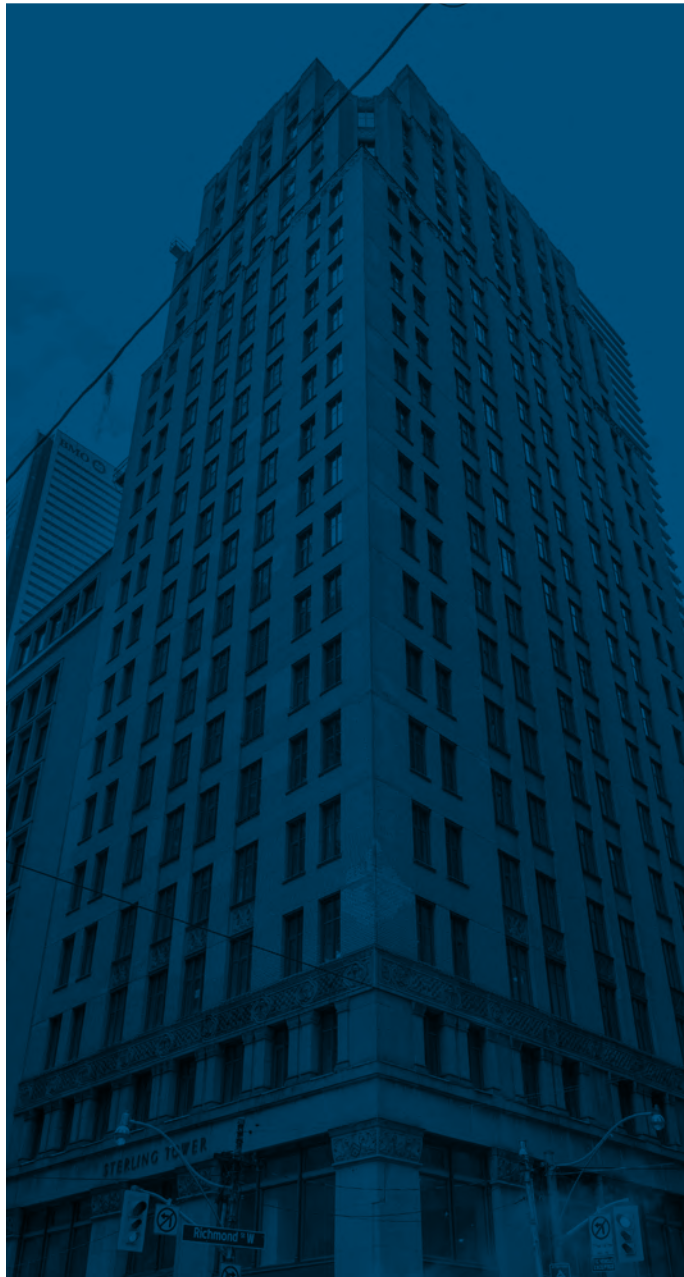
Riley.Littlejohn@cushwake.com

**Cushman & Wakefield ULC, Brokerage**

161 Bay Street, Suite 1500 P.O. Box 602

Toronto, ON M5J 2S1

www.cushmanwakefield.com



PLEASE CONTACT:

**CLARKE STRUTHERS\***

Vice President

**416 359 2451**

Clarke.Struthers@cushwake.com

**RILEY LITTLEJOHN\***

Associate

**416 359 2444**

Riley.Littlejohn@cushwake.com

**Cushman & Wakefield ULC, Brokerage**

161 Bay Street, Suite 1500 P.O. Box 602

Toronto, ON M5J 2S1

[www.cushmanwakefield.com](http://www.cushmanwakefield.com)

