



Mounted Artwork and Furniture shown for concept only

156
LUDLOW STREET

Open Floor Plan Space
Gallery/Commercial Loft
Dedicated Private Entry

156 Ludlow Street

Between Stanton & Rivington Streets

Available Space

Partial 3rd Fl:	878 sf	Sublease Term:	1 year	Rent:	\$5,500/month
		Possession:	Immediate		

Comments

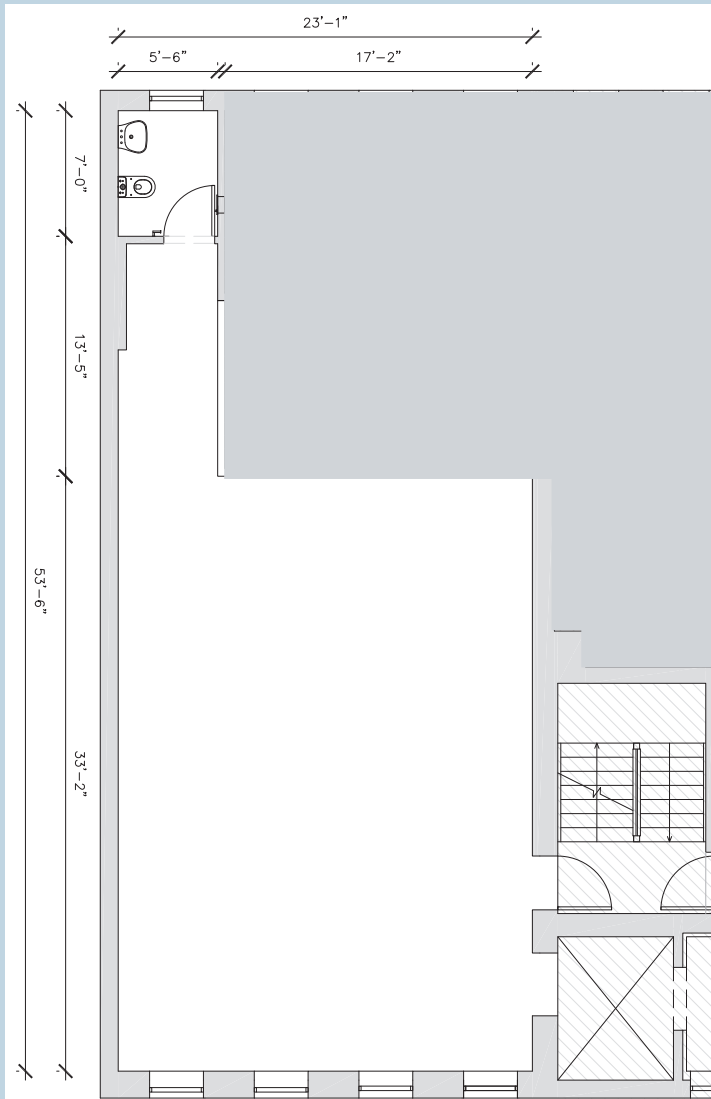
- Open floor plan gallery/commercial loft featuring a private entrance - to be delivered unfurnished
- Direct elevator access that opens directly into the space
- Windows facing south offer good natural light
- Hardwood floors throughout, (1) restroom, and tenant-controlled HVAC
- Ideal for artists, creative and various office users
- Vicinity of the New Museum and International Center of Photography Museum
- Join multiple area galleries including Krause Gallery, Richard Taittinger Gallery, Perrotin New York, Bureau Contemporary Art, Mark Miller Gallery, as well as the Rivington Music Studio
- Steps from a diverse mix of Lower East Side eateries and bars such as Katz's Delicatessen, Clinton St Baking Co., Russ & Daughters, Hair of the Dogs, Remedy Diner, Sonnyboy, Double Chicken Please, Mr. Purple, Remedy Diner , il laboratorio del gelato and many more
- 3 Minute walk to the Delancey St/Essex St **F M J Z** subway station

Interior View

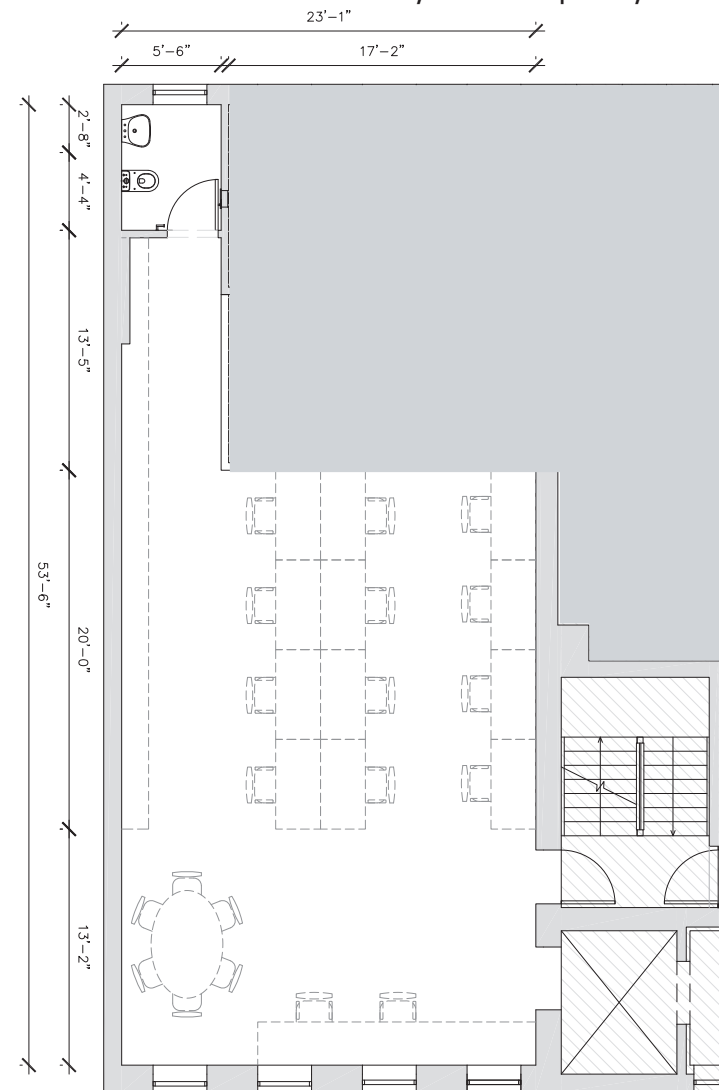


Mounted Artwork shown for concept only

Floor Plan



Furniture shown for Office layout concept only



Floor Plan not to scale, for display purposes only



For further information and/or inspection contact:

Ben Waller

Partner, Licensed Assoc. Real Estate Broker
212.400.9515 | bwaller@absre.com

Anthony Diorio

Licensed Real Estate Salesperson
518.894.1605 | adiorio@absre.com

ABS Partners Real Estate • 200 Park Avenue South, 10th Floor, New York, NY 10003 • 212.400.6060 • www.absre.com