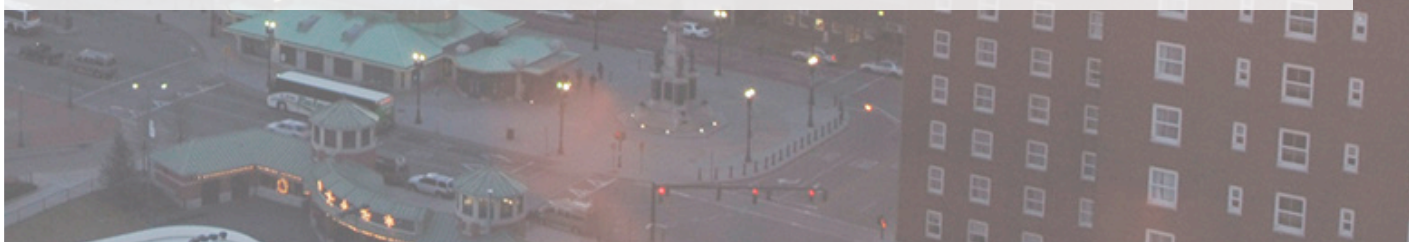


sweeney
REAL ESTATE & APPRAISAL

INDUSTRIAL FOR LEASE

12-14 LEHIGH STREET PROVIDENCE - RHODE ISLAND



One Turks Head Place, Suite 850 • Providence, Rhode Island 02903
T: 401.331.9300 • F: 401.331.9306 • www.sreari.com



KEVIN CASEY | KCASEY@SREARI.COM | 401-331-9300 | 401-464-2663

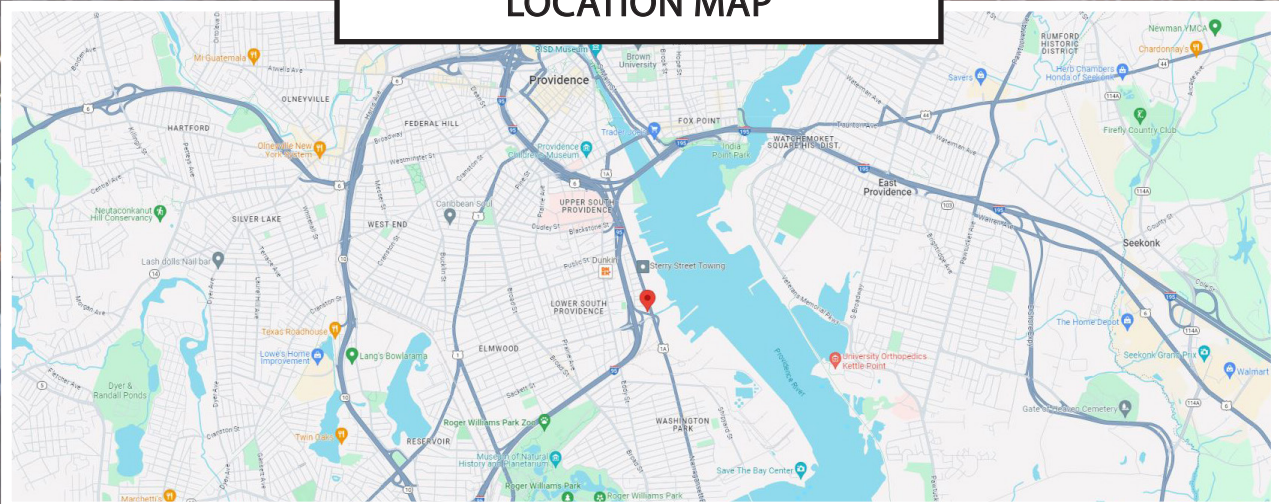
12-14 LEHIGH STREET PROVIDENCE - RHODE ISLAND

RENTAL RATE: \$7.50/SF
LEASE TYPE: MG

PROPERTY DETAILS

- Single Level Manufacturing
- 10,000± SF
- 1.2± Acres of Land
- 600 AMP/3-Phase
- Two (2) Loading Docks
- 16 FT Ceilings
- Fenced in Yard
- Zoned Industrial (M-2)
- On/Off I-95
- Frontage on Allens Avenue

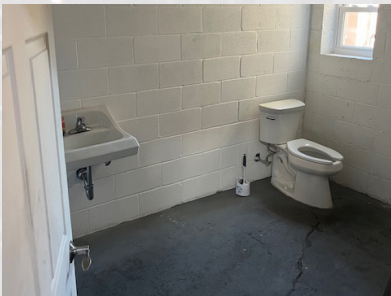
LOCATION MAP



KEVIN CASEY | KCASEY@SREARI.COM | 401-331-9300 | 401-464-2663

12-14 LEHIGH STREET PROVIDENCE - RHODE ISLAND

ADDITIONAL PHOTOS



All information furnished regarding property for sale, rental or financing is from sources deemed reliable. But no warranty or representation is made as to the accuracy thereof and same is submitted subject to errors, omissions, change or price, rental or other conditions, prior sale lease or financing or withdrawal without notice.

