

37483 INTERCHANGE DRIVE
FARMINGTON HILLS, MICHIGAN

INDUSTRIAL FOR SALE OR LEASE
16,284 Square Feet Available



**SIGNATURE
ASSOCIATES**
KNOW SIGNATURE | KNOW RESULTS

HALSTED COMMERCE PARK



PROPERTY FEATURES

- 16,284 square feet available
- Office space to suit
- 20'6" clear height
- (2) 12x14 grade level doors
- Zoned IRO, Industrial/Research
- Signage on Halsted Road available
- Current configuration includes approximately 2/3 offices, which can be reduced if required
- Great access to all area freeways
- Lease rate to be at market rate depending on amount of improvements, lease term, and credit of tenant



For more information, please contact:

JEFF LEMANSKI
(248) 359 0641

jlemanski@signatureassociates.com

CHRISTOPHER M. D'ANGELO
(248) 948 0109

cdangelo@signatureassociates.com

SIGNATURE ASSOCIATES

One Towne Square, Suite 1200
Southfield, MI 48076

www.signatureassociates.com

37483 Interchange Drive – Farmington Hills, Michigan

Industrial For Sale or Lease

16,284
Square Feet
AVAILABLE

Additional Photos



For more information, please contact:

JEFF LEMANSKI

(248) 359 0641

jlemanski@signatureassociates.com

CHRISTOPHER M. D'ANGELO

(248) 948 0109

cdangelo@signatureassociates.com

SIGNATURE ASSOCIATES

One Towne Square, Suite 1200

Southfield, MI 48076

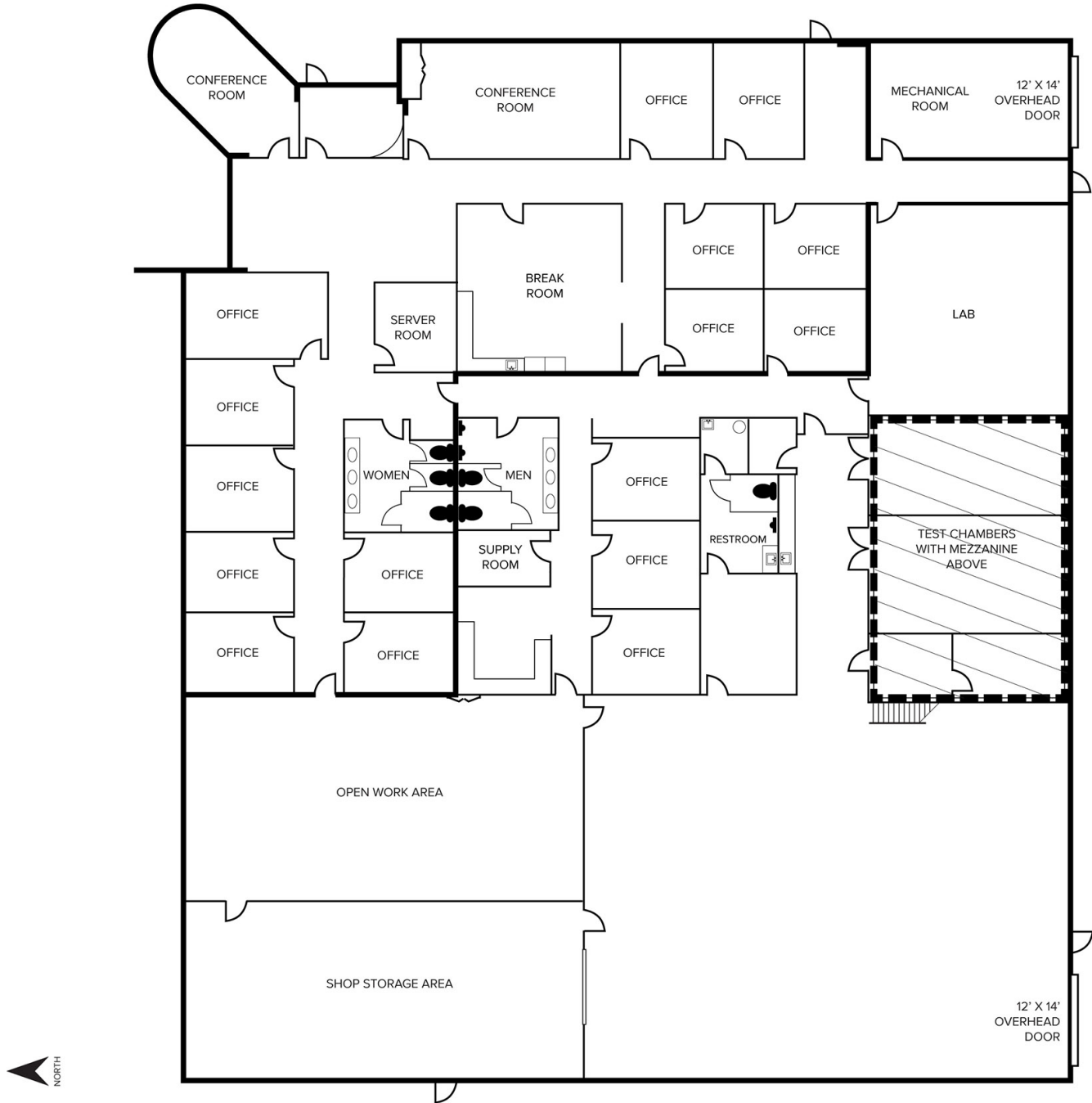
www.signatureassociates.com

37483 Interchange Drive – Farmington Hills, Michigan

Industrial For Sale or Lease

16,284
Square Feet
AVAILABLE

Original Floor Plan



For more information, please contact:

JEFF LEMANSKI

(248) 359 0641

jlemanski@signatureassociates.com

CHRISTOPHER M. D'ANGELO

(248) 948 0109

cdangelo@signatureassociates.com

SIGNATURE ASSOCIATES

One Towne Square, Suite 1200

Southfield, MI 48076

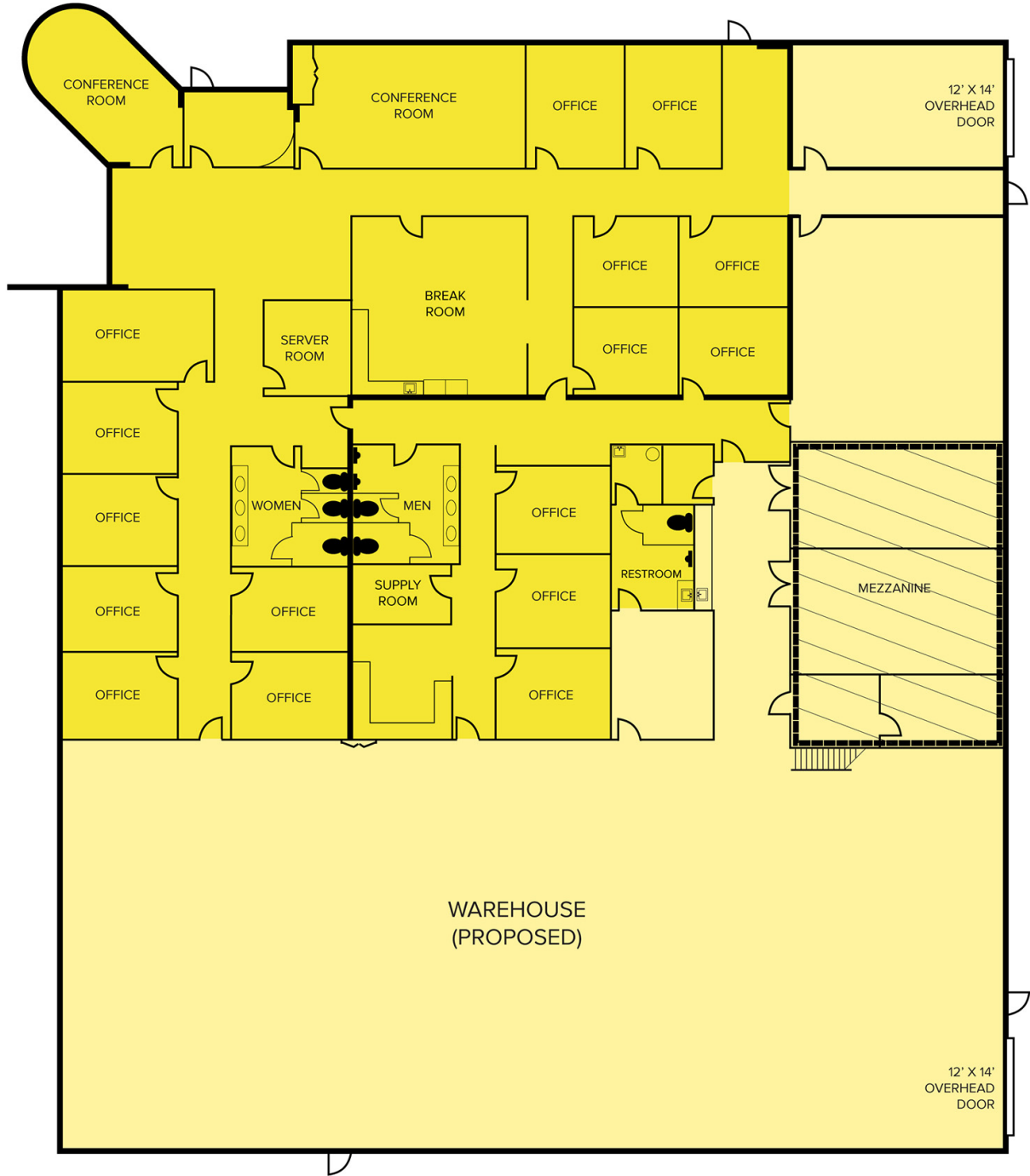
www.signatureassociates.com

37483 Interchange Drive – Farmington Hills, Michigan

Industrial For Sale or Lease

16,284
Square Feet
AVAILABLE

Proposed Floor Plan – More Warehouse



For more information, please contact:

JEFF LEMANSKI

(248) 359 0641

jlemanski@signatureassociates.com

CHRISTOPHER M. D'ANGELO

(248) 948 0109

cdangelo@signatureassociates.com

SIGNATURE ASSOCIATES

One Towne Square, Suite 1200

Southfield, MI 48076

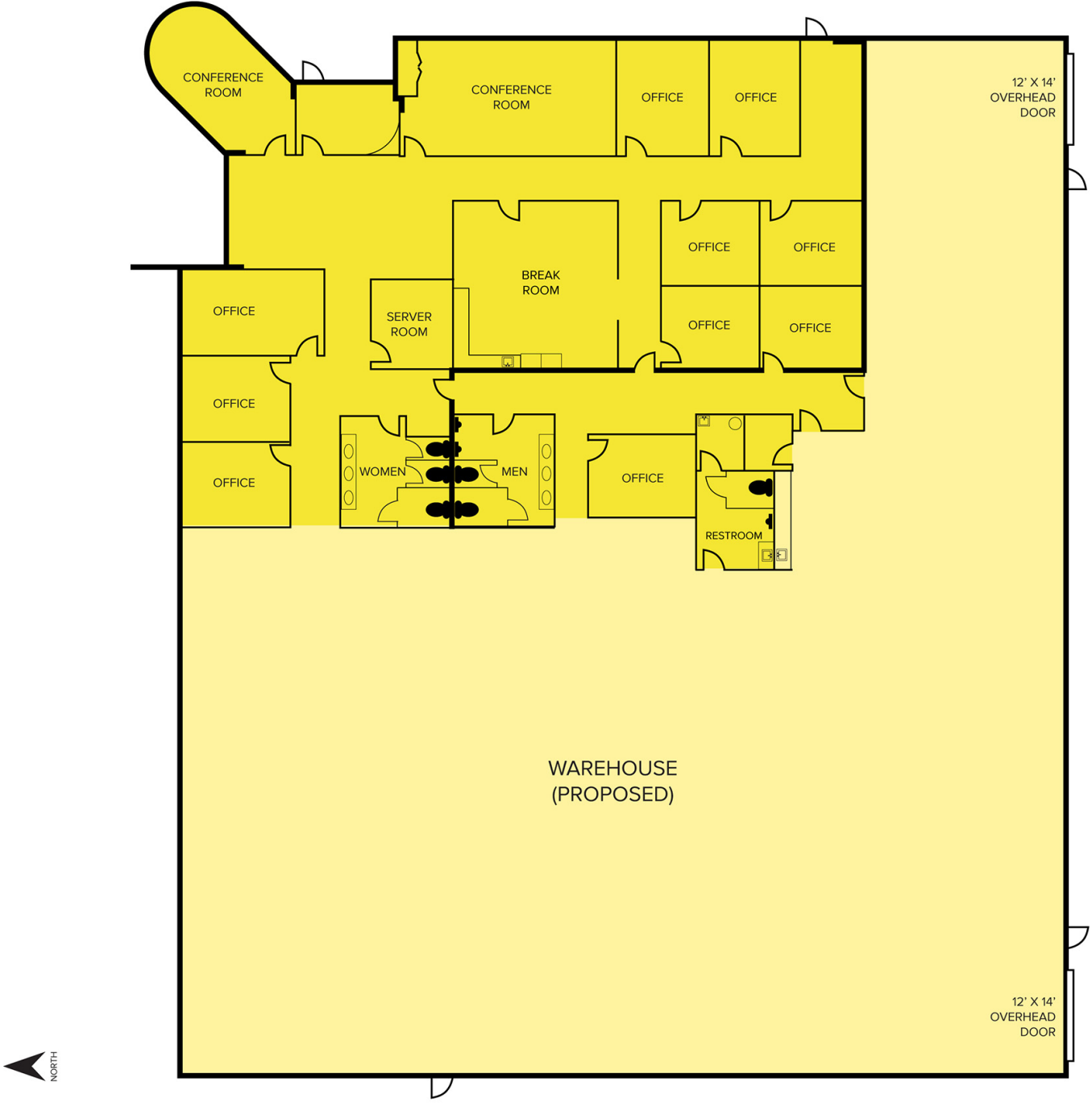
www.signatureassociates.com

37483 Interchange Drive – Farmington Hills, Michigan

Industrial For Sale or Lease

16,284
Square Feet
AVAILABLE

Proposed Floor Plan – Maximum Warehouse



For more information, please contact:

JEFF LEMANSKI
(248) 359 0641
jlemanski@signatureassociates.com

CHRISTOPHER M. D'ANGELO
(248) 948 0109
cdangelo@signatureassociates.com

SIGNATURE ASSOCIATES
One Towne Square, Suite 1200
Southfield, MI 48076
www.signatureassociates.com

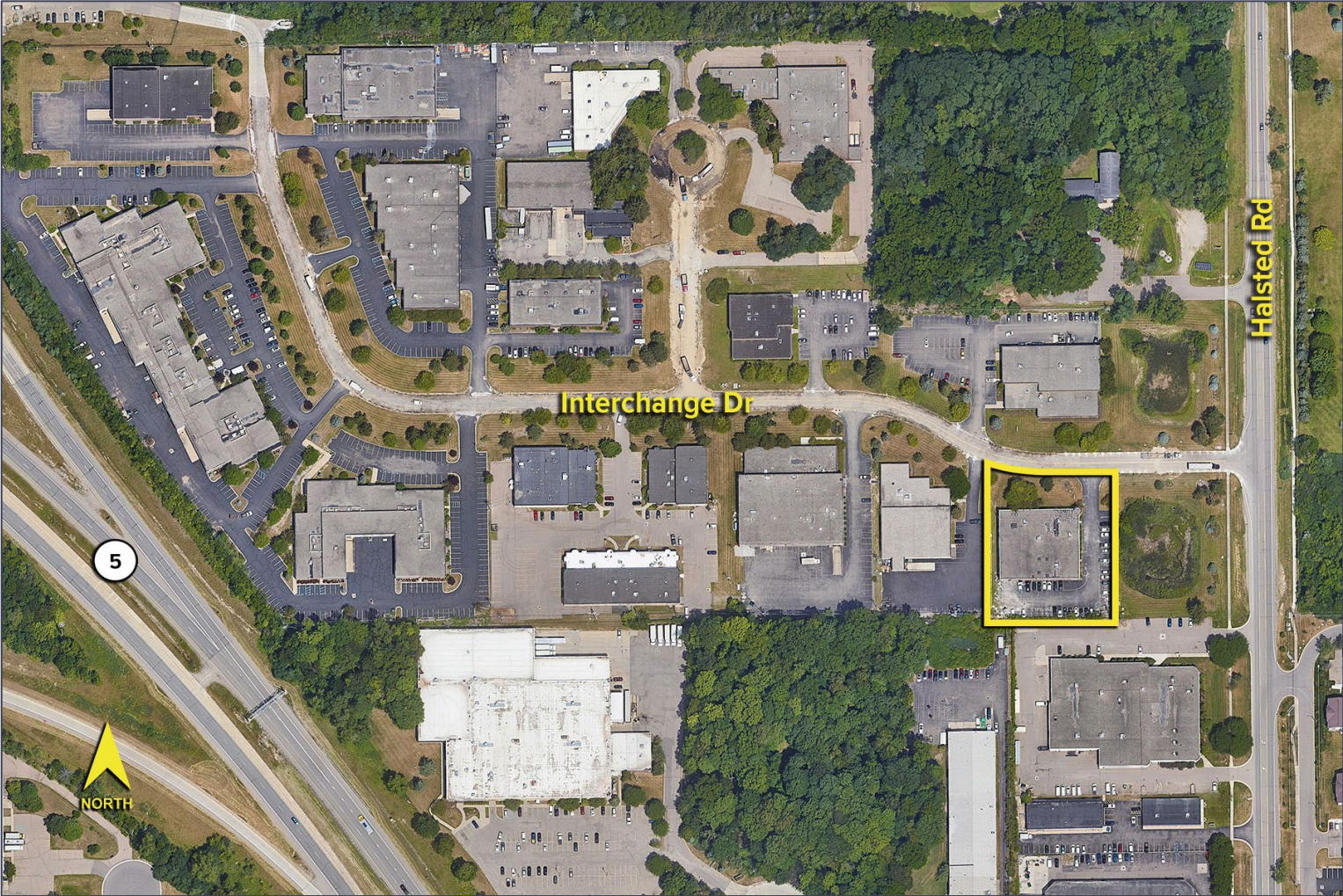
Information is subject to verification and no liability for errors or omissions is assumed. Price is subject to change and listing withdrawal.

37483 Interchange Drive – Farmington Hills, Michigan

Industrial For Sale or Lease

16,284
Square Feet
AVAILABLE

Aerial



For more information, please contact:

JEFF LEMANSKI
(248) 359 0641
jlemanski@signatureassociates.com

CHRISTOPHER M. D'ANGELO
(248) 948 0109
cdangelo@signatureassociates.com

SIGNATURE ASSOCIATES
One Towne Square, Suite 1200
Southfield, MI 48076
www.signatureassociates.com

Information is subject to verification and no liability for errors or omissions is assumed. Price is subject to change and listing withdrawal.