

For Sublease

Prairie Business Park

Building II

200 SE 37th Street
Grimes, IA 50111
www.cbre.com/desmoines

Available Space

- + Suite 280
 - 25,000 SF
 - Lease Thru: 8/31/2029
 - **Immediate Occupancy Available**

Lease Rate

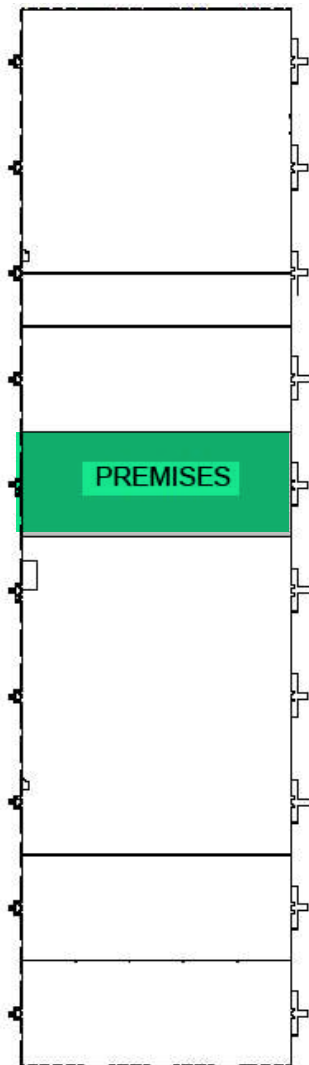
- + Base Rent: \$6.05 PSF NNN
- + OPEX: \$4.82 PSF

Property Features

- + 1,837 SF office buildout
 - 2 offices
 - Large open office space
 - 2 restrooms
 - Oversized drive-in door
 - 2 docks
- + Card access security available
- + 32' clear ceiling height
- + 50' x 250' bays; 50' x 50' column spacing
- + 208 Volt, 3,000 Amp, 3-phase electrical service
- + ESFR sprinklered
- + Highly visible from S. James Street & SE 37th Street
- + Ample Parking
- + Rear load facility



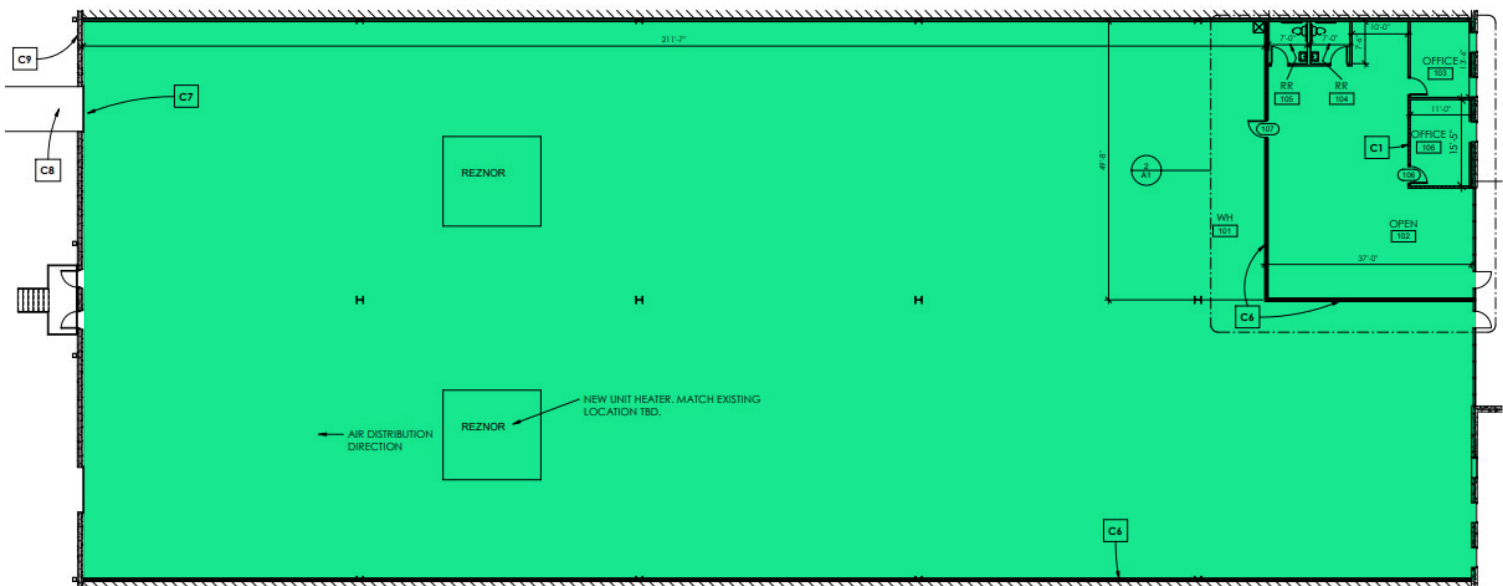
Site Plan



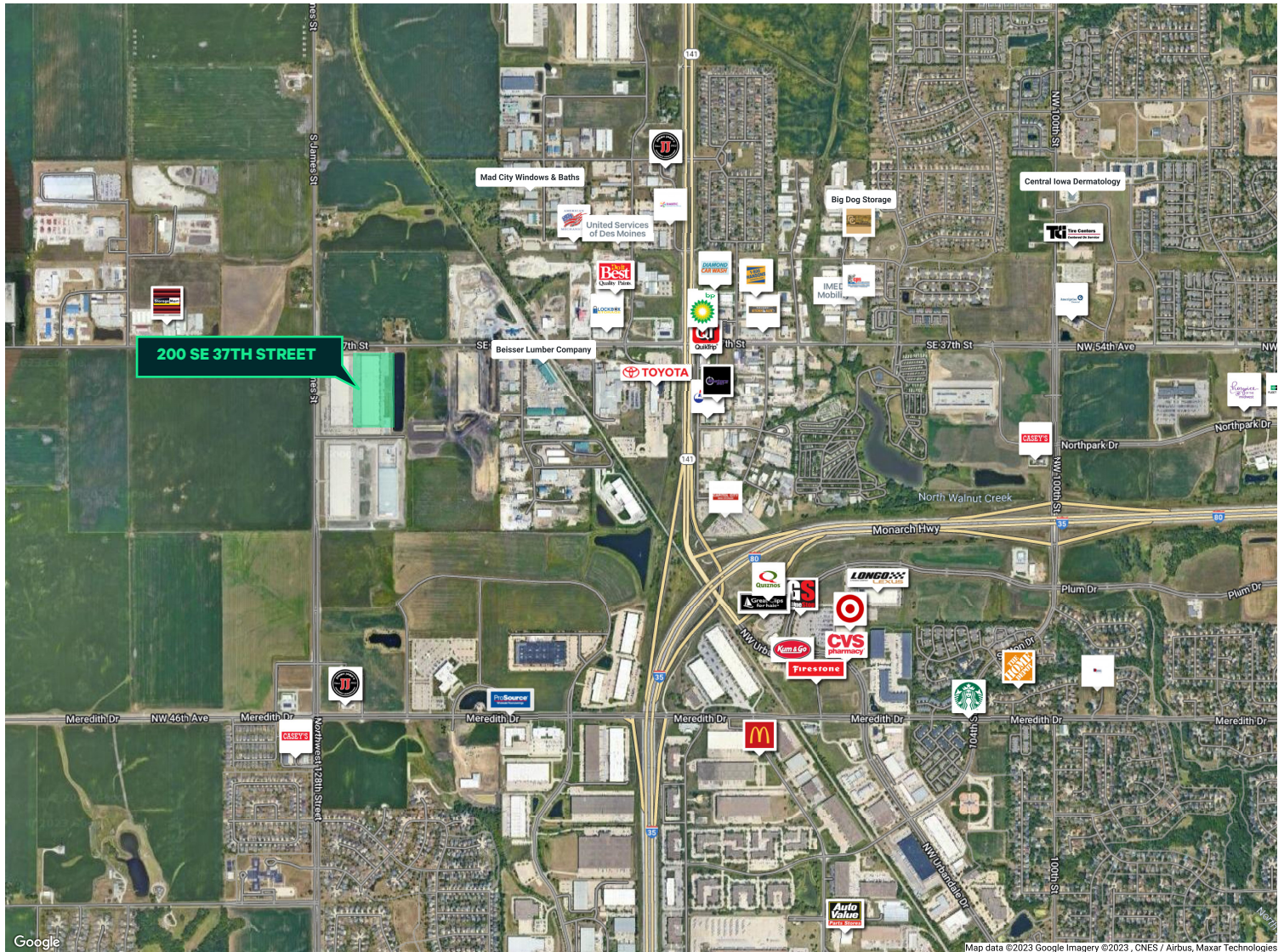
Suite Features

- + Existing Office: Approximately 1,837 SF
- + Clear Height: 32'
- + Dock Door
- + Enlarged Drive In Door with Ramp: 12'W X 16'T
- + Ramp – 14'W X 40'L
- + LED Lighting in both Whse & Office Areas

Floor Plan



Location



Contact Us

Thomas (TJ) Jacobs, CCIM

First Vice President
+1 515 418 8776
thomas.jacobs@cbre.com
Licensed in the State of Iowa

Harrison Kruse, SIOR, CCIM

First Vice President
+1 515 556 9168
harrison.kruse@cbre.com
Licensed in the State of Iowa

Ned Turner

Senior Associate
+1 515 371 0499
ned.turner@cbre.com
Licensed in the State of Iowa

© 2025 CBRE, Inc. All rights reserved. This information has been obtained from sources believed reliable, but has not been verified for accuracy or completeness. You should conduct a careful, independent investigation of the property and verify all information. Any reliance on this information is solely at your own risk. CBRE and the CBRE logo are service marks of CBRE, Inc. All other marks displayed on this document are the property of their respective owners, and the use of such logos does not imply any affiliation with or endorsement of CBRE. Photos herein are the property of their respective owners. Use of these images without the express written consent of the owner is prohibited.