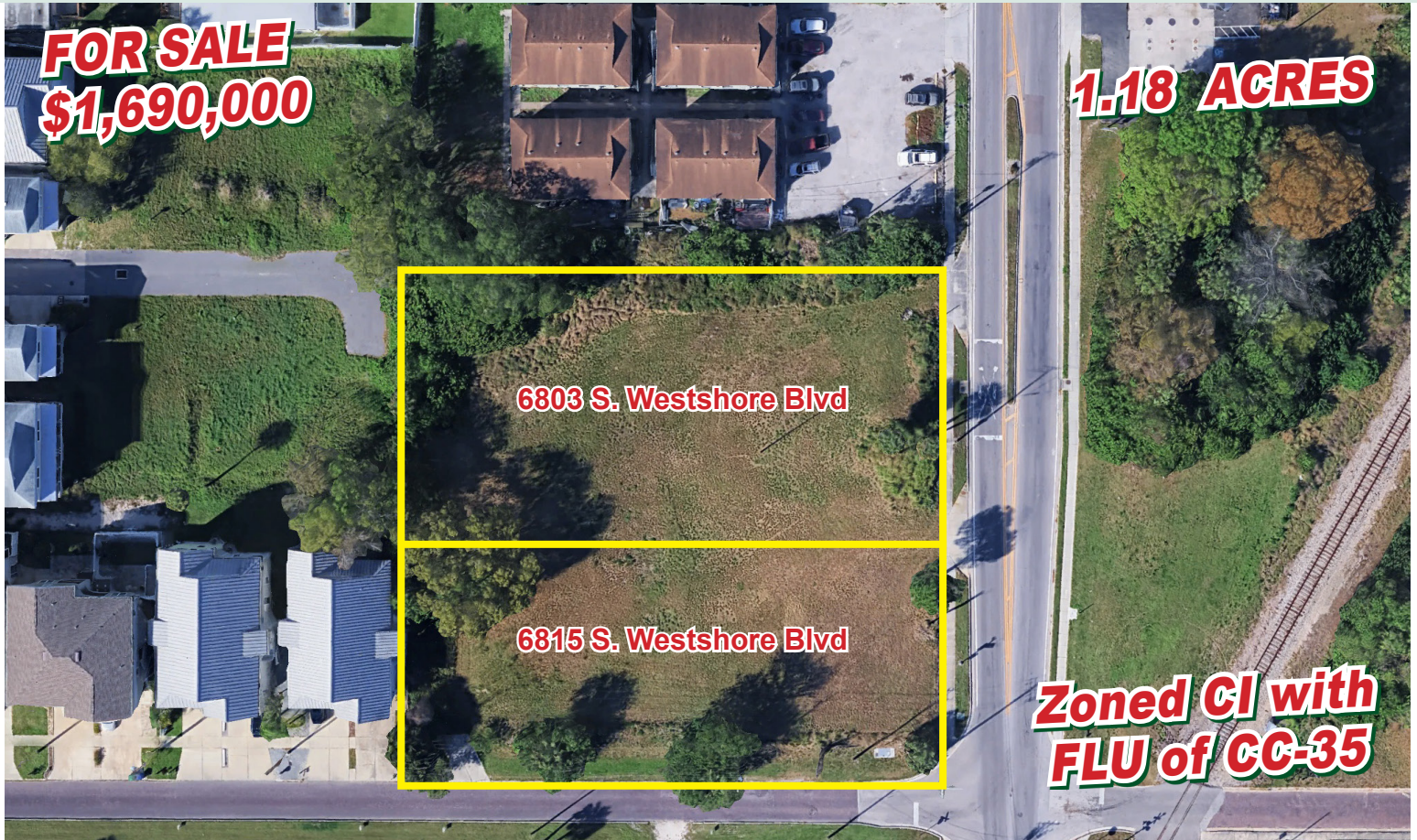


South Tampa Townhome Development Site



6803 & 6815 S. Westshore Blvd., Tampa, FL 33616



Description

- Up to 40 Units or 16-20 Townhomes
- Recent Engineering Report (8/30/24)
 - Growing area of South Tampa with proximity to MacDill AFB

FOR MORE INFORMATION CONTACT

Chris Parrado, Sales Associate

Off 813.242.6464 Ext 23

Cel 813.294.7187

cparrado@alcommercialinc.com

www.alcommercialinc.com



Licensed Real Estate Broker

South Tampa Townhome Development Site - Concept Plan A

CONCEPT PLAN "A"

S Westshore Blvd & W Prescott St
Tampa, FL

PROJECT DATA

TOTAL PROJECT AREA:
1.92 ACRES

JURISDICTION:
CITY OF TAMPA, FL

PROPOSED USE:
CC-35 COMMUNITY COMMERCIAL

PROPERTY ZONING:
C1 COMMERCIAL INTENSIVE

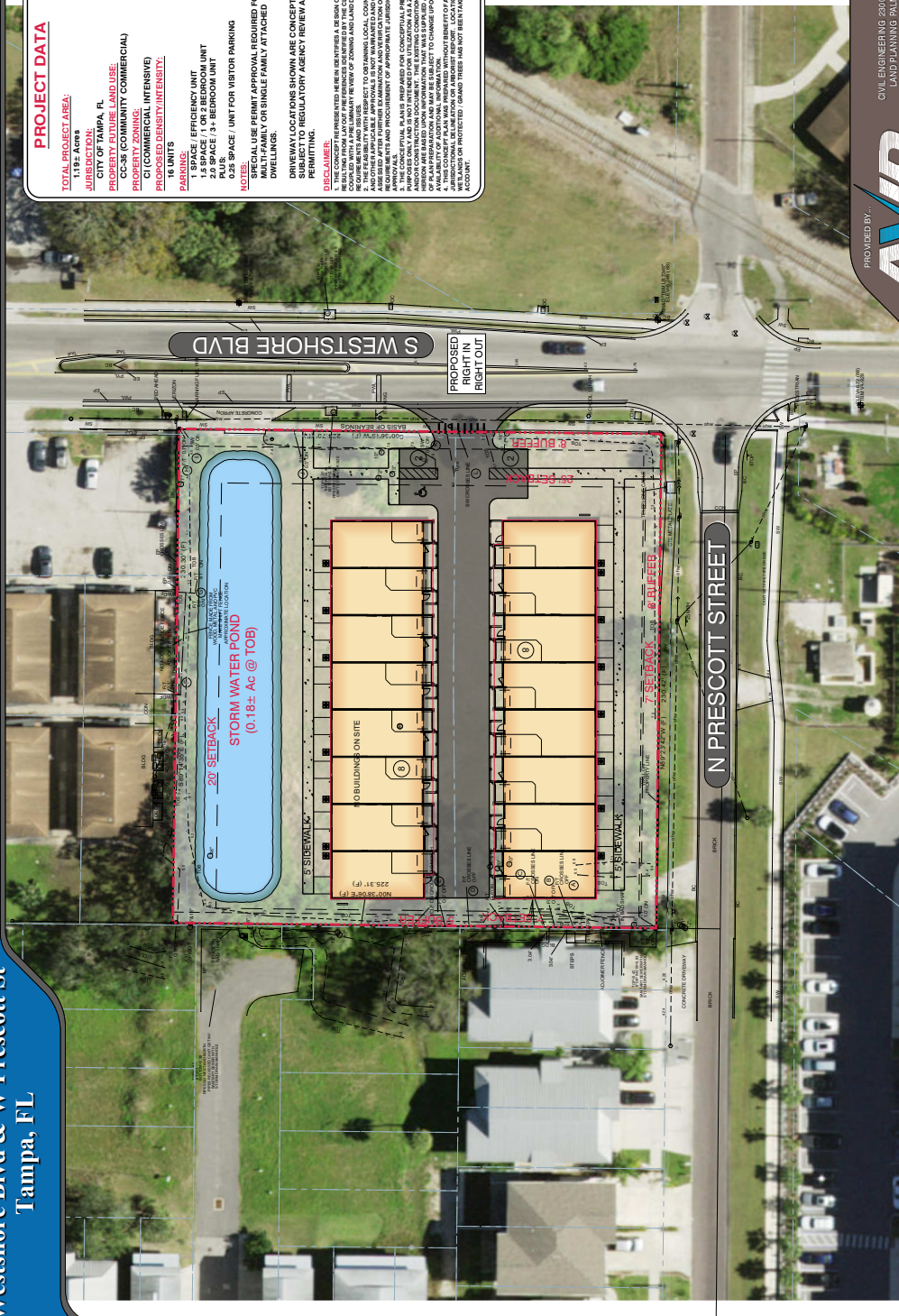
PROPOSED DENSITY INTENSITY:
16 UNITS

1.5 SPACE / EFFICIENCY UNIT
1.5 SPACE / 1 OR 2 BEDROOM UNIT
1.5 SPACE / 3+ BEDROOM UNIT
0.25 SPACE / UNIT FOR VISITOR PARKING

NOTES:
SPECIAL USE PERMIT APPROVAL REQUIRED FOR MULTIFAMILY OR SINGLE FAMILY ATTACHED DWELLINGS.

DRIVEWAY LOCATIONS SHOWN ARE CONCEPTUAL AND SUBJECT TO REGULATORY AGENCY REVIEW AND APPROVAL.

DISCLAIMER:
1. THE CONCEPT PRESENTED HEREIN IS INTENDED AS A DESIGN CONCEPT ONLY AND DOES NOT CONSTITUTE AN OFFER OF ANY REAL ESTATE. THE DEVELOPER SHALL BE RESPONSIBLE FOR OBTAINING ALL NECESSARY PERMITS AND APPROVALS FROM THE LOCAL, STATE AND FEDERAL GOVERNMENTS. THE DEVELOPER SHALL BE RESPONSIBLE FOR OBTAINING ALL NECESSARY PERMITS AND APPROVALS FROM THE LOCAL, STATE AND FEDERAL GOVERNMENTS. THE DEVELOPER SHALL BE RESPONSIBLE FOR OBTAINING ALL NECESSARY PERMITS AND APPROVALS FROM THE LOCAL, STATE AND FEDERAL GOVERNMENTS.



PROVIDED BY:
AVID GROUP
CIVIL ENGINEERING 2300 COURLEW ROAD, STE 201
LAND PLANNING PALM HARBOR, FLORIDA
TRAFFIC TRAINING SURVEYS PHONE 727/793-6600
GIS.AVINGROUP.COM

PROVIDED FOR:
South Westshore Investments, LLC

PROPOSED PLAN NUMBER: 2024-0001
SCALE: 1"=20' DATE: 02/20/24
DRAWN BY: E. B. B. PROJECT NO.: 2024-0001

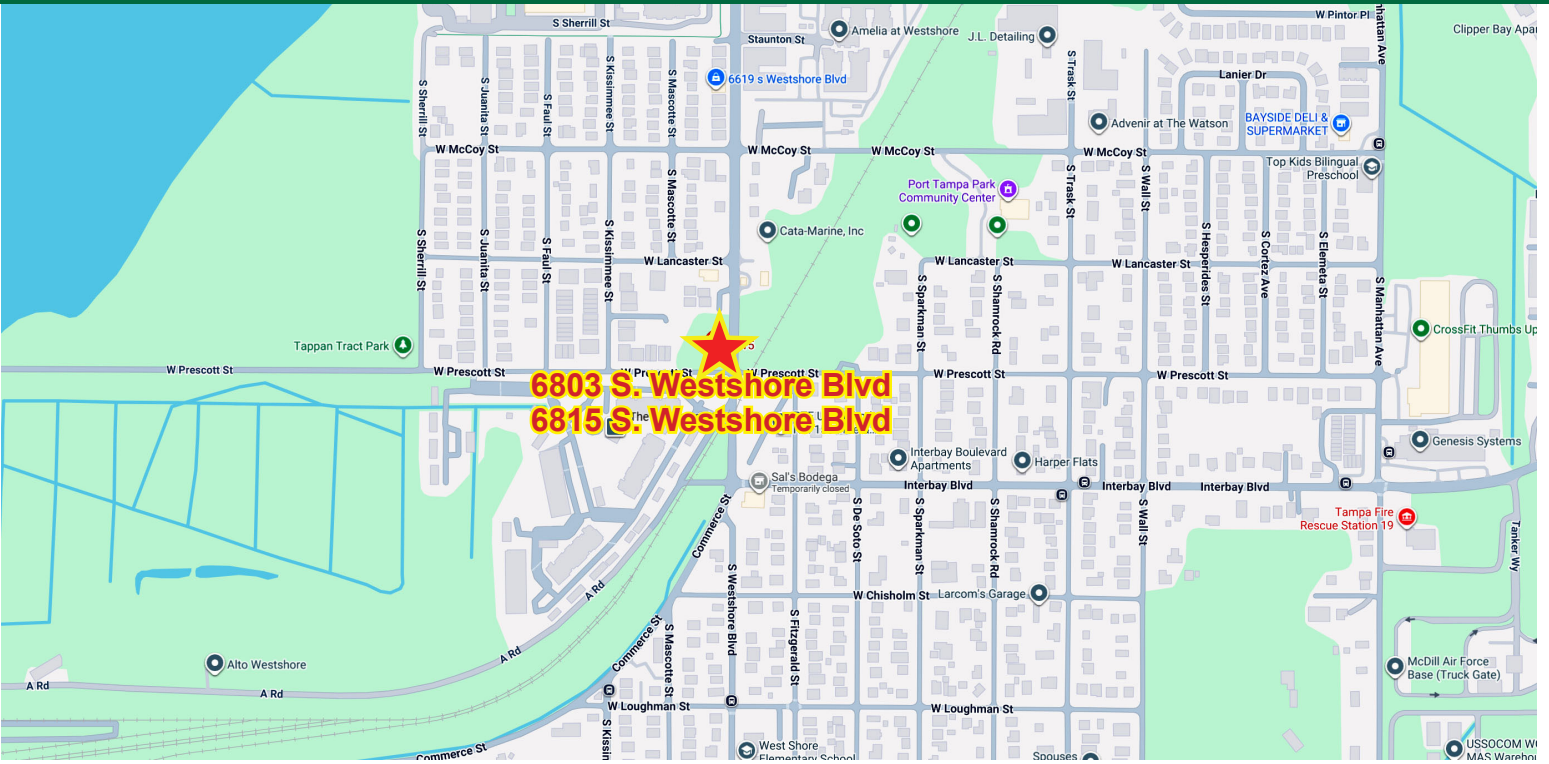
FOR MORE INFORMATION CONTACT
Chris Parrado, Sales Associate
Off 813.242.6464 Ext 23
Cel 813.294.7187
cparrado@alcommercialinc.com
www.alcommercialinc.com



South Tampa Townhome Development Site



6803 & 6815 S. Westshore Blvd., Tampa, FL 33616



FOR MORE INFORMATION CONTACT

Chris Parrado, Sales Associate

Off 813.242.6464 Ext 23

Cel 813.294.7187

cparrado@alcommercialinc.com

www.alcommercialinc.com

