

FOR SUBLEASE
5640 Fishers Lane
Rockville, MD 20852



**SMALL LAB SUBLEASE OPPORTUNITY AVAILABLE IMMEDIATELY
IN TRANSIT ORIENTED ROCKVILLE LOCATION**

BUILDING FEATURES

- Building generator
- Façade upgrades
- New common corridors and entrance
- Modern ADA compliant restrooms
- 25,498 SF | 1-Story
- 14' clear height
- 150 shared parking spaces
- Grade level loading



For More Information, Please Contact:

MEGAN WILLIAMS
Managing Director
+1 301 634 8489
megan.williams@cushwake.com

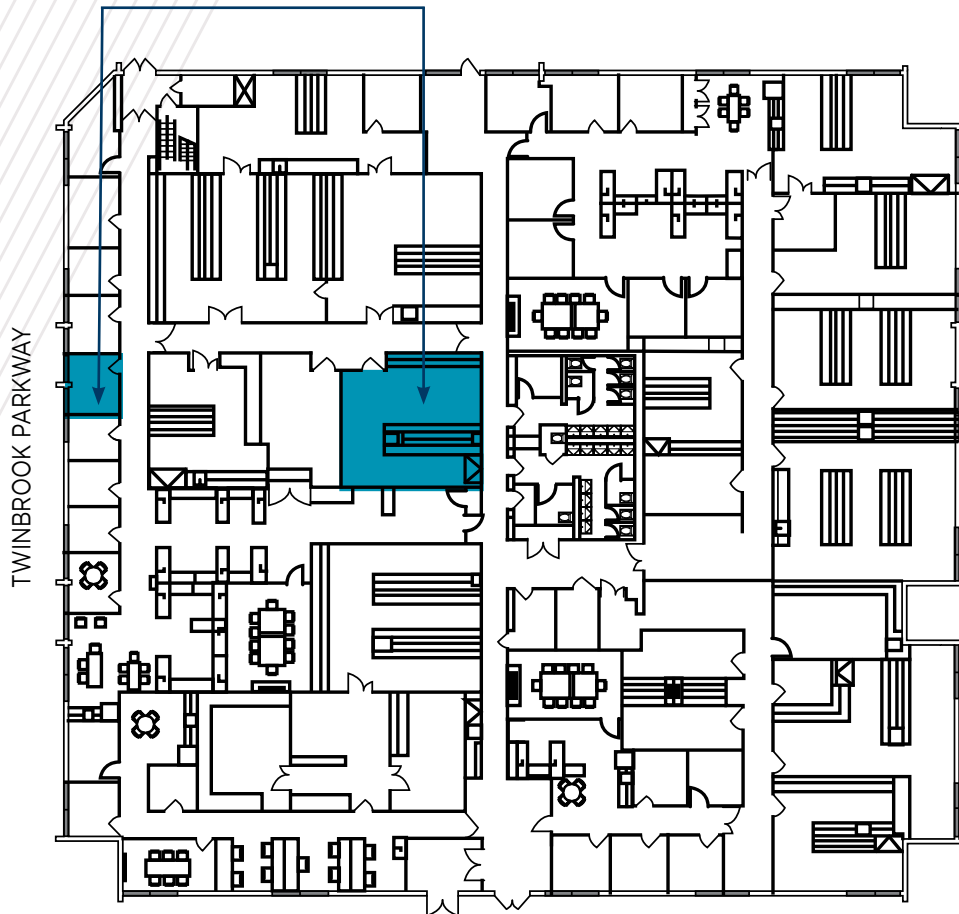
PETER ROSAN
Executive Managing Director
+1 301 634 8487
peter.rosan@cushwake.com

©2023 Cushman & Wakefield. All rights reserved. The information contained in this communication is strictly confidential. This information has been obtained from sources believed to be reliable but has not been verified. No warranty or representation, express or implied, is made as to the condition of the property (or properties) referenced herein or as to the accuracy or completeness of the information contained herein, and same is submitted subject to errors, omissions, change of price, rental or other conditions, withdrawal without notice, and to any special listing conditions imposed by the property owner(s). Any projections, opinions or estimates are subject to uncertainty and do not signify current or future property performance.

FOR SUBLEASE
5640 Fishers Lane
Rockville, MD 20852



- One lab space
- One office space available within larger lab suite



BUILDING HIGHLIGHTS

- 2-150 HP low pressure steam boilers
- Dual heat exchangers
- 2-270 ton chillers
- 3-Manifold lab air handlers with 100% outside air
- 2-Manifold office air handlers
- Central gas water heaters
- 2' CW
- 6" Fire
- Siemens apogee DDC pneumatic
- 2,000 AMP 277/480V electric feed
- Access to main suite's conference, kitchen, and other collaborative common areas

For More Information, Please Contact:

MEGAN WILLIAMS

Managing Director
+1 301 634 8489
megan.williams@cushwake.com

PETER ROSAN

Executive Managing Director
+1 301 634 8487
peter.rosan@cushwake.com