



OFFICE/MEDICAL SPACE FOR LEASE

600 Eagleview Boulevard

EXTON, PA

Area Available

14,225 SF on the 1st floor

± 2,580 – 8,182 SF on the 2nd floor

Property Highlights

- Conveniently located near numerous local amenities which include:
 - Restaurant Row – Featuring AI fresco dining
 - Fitness center
 - Daycare
 - Walking trails
 - Farmers market
- Building monument signage available
- Parking: 4.80/1,000 SF ratio
- Easy access to Route 113 and Pottstown Pike



For information, please contact:

Jim Dugan
 Executive Managing Director
 t 610-879-4513
 james.dugan@nmrk.com

Jeff Mack
 Executive Managing Director
 t 610-755-6960
 jeff.mack@nmrk.com

Sean Donnelly
 Associate
 t 610-755-6936
 sean.donnelly@nmrk.com

1000 Continental Drive, Suite 200
 King of Prussia, PA 19406



NEWMARK

Licensed in Pennsylvania as Newmark Real Estate

The information contained herein has been obtained from sources deemed reliable but has not been verified and no guarantee, warranty or representation, either express or implied, is made with respect to such information. Terms of sale or lease and availability are subject to change or withdrawal without notice.

600 Eagleview Boulevard

2,580 RSF – 22,407 SF OFFICE/MEDICAL SPACE FOR LEASE



SUITE ENTRANCE



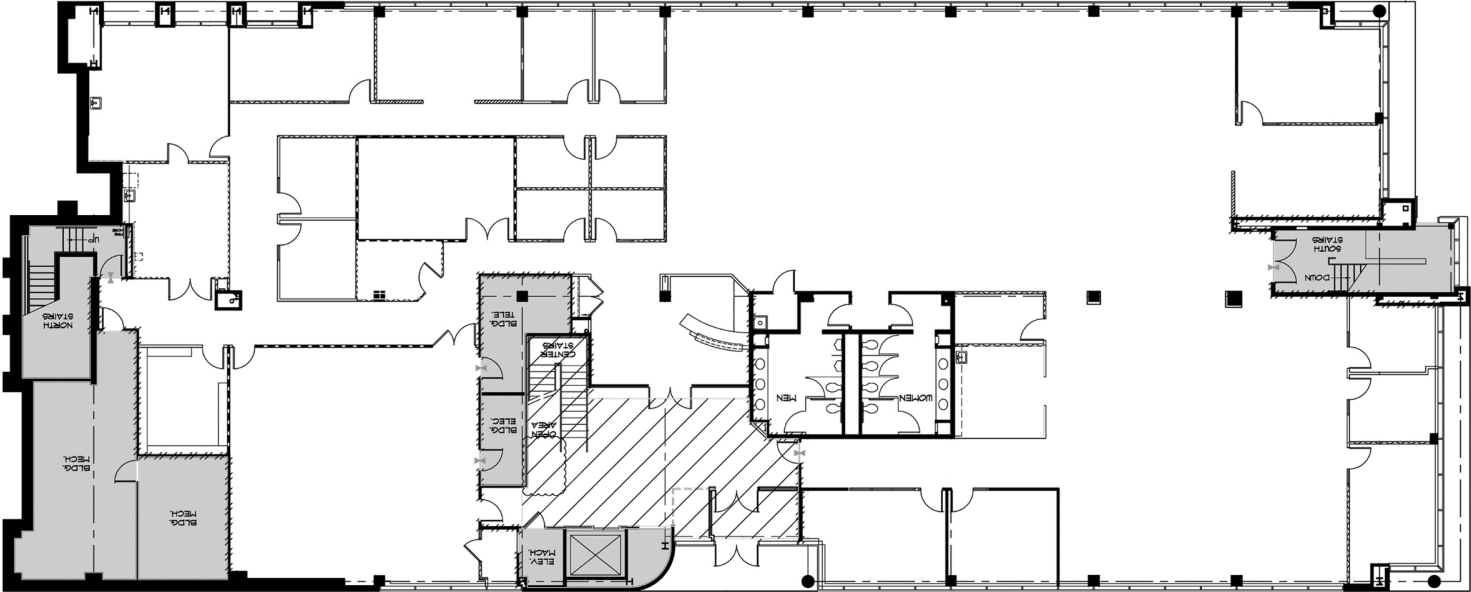
FULLY EQUIPPED BOARD ROOM



ABUNDANT NATURAL LIGHT DUE TO WINDOW LINE

600 Eagleview Boulevard

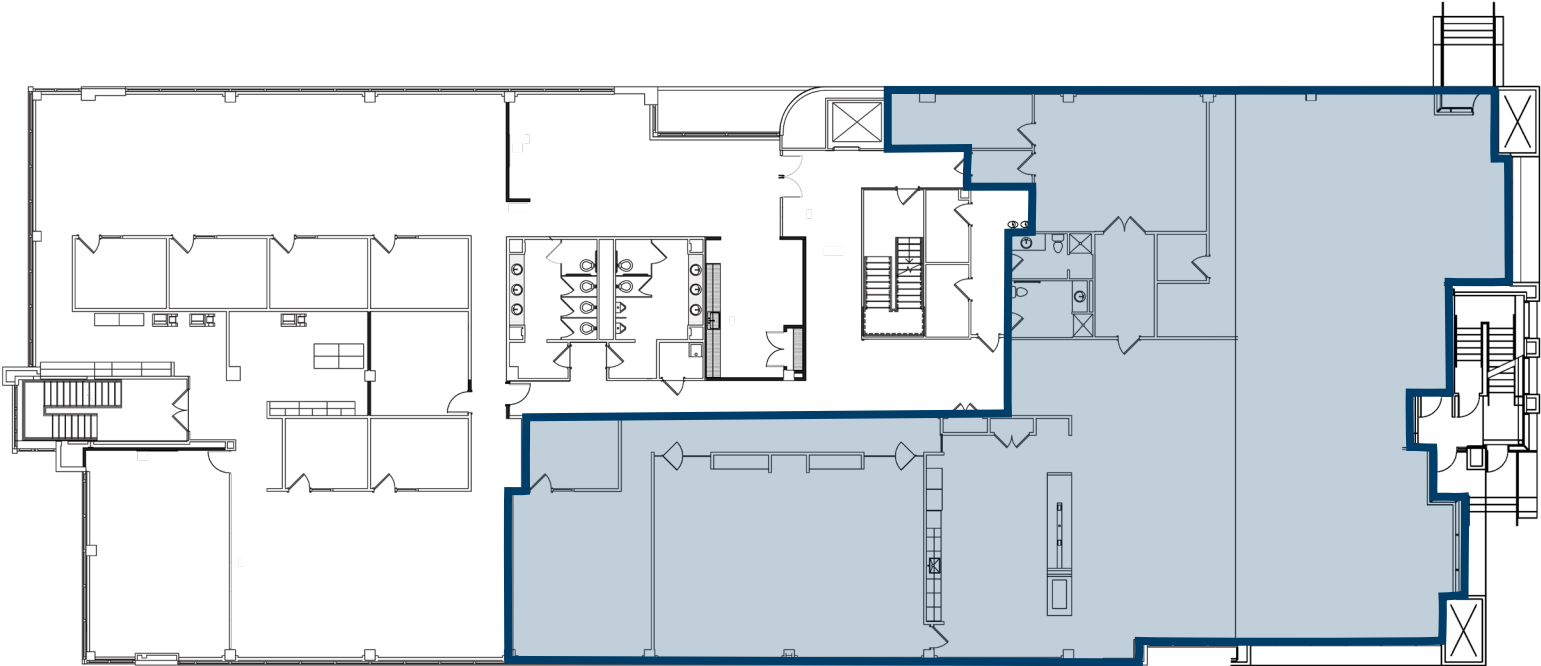
14,225 SF ON THE 1ST FLOOR



FIRST FLOOR AVAILABLE SPACE

600 Eagleview Boulevard

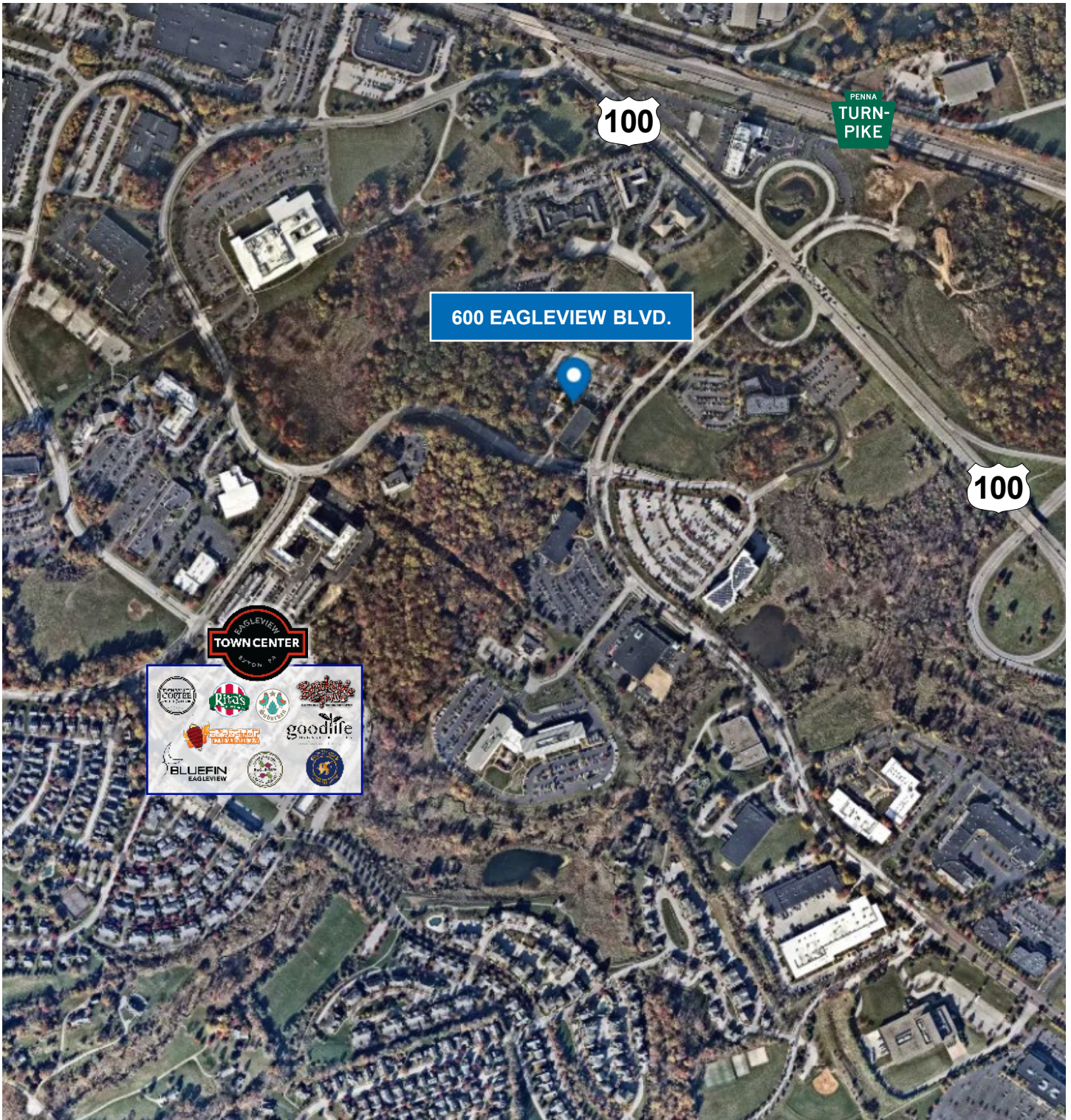
2,580 – 8,182 RSF ON THE 2nd FLOOR



2,580 – 8,182 RSF
AVAILABLE

600 Eagleview Boulevard

2,580 RSF - 14,225 SF OFFICE/MEDICAL SPACE FOR LEASE



CLOSE PROXIMITY TO NUMEROUS AMENITIES AND ROADWAYS