

# Bakery Square

Bakery Office Three | Pittsburgh, PA

**Premier Sublease Opportunity**

*Up to 114,192 SF Available*



**[Watch the video here](#)**





# Property Highlights

Bakery Office Three | 6501 Living Place



## Multiple floors

available for sublease  
Term through 11/30/2035



## Fitness center

located in the  
building



Access to  
**Conference** center  
([Conference Ctr Tour](#))



## Free Parking

2.5 / 1,000



## Fully furnished

Haworth office  
systems



Private **rooftop  
terrace**



## Floor

## Size

## Condition

1

7,334 RSF

Lab

4

8,798 RSF

Lab

6

37,082 RSF

Fully furnished office

8

30,489 RSF

Fully furnished office

9

30,489 RSF

Fully furnished office

# Floor Plans

1st floor | 7,334 RSF  
*As-built plan*



4th floor | 8,798 RSF  
*As-built plan*



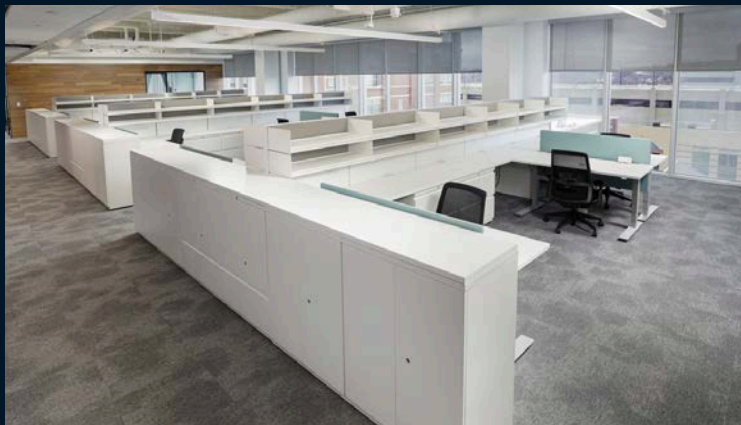
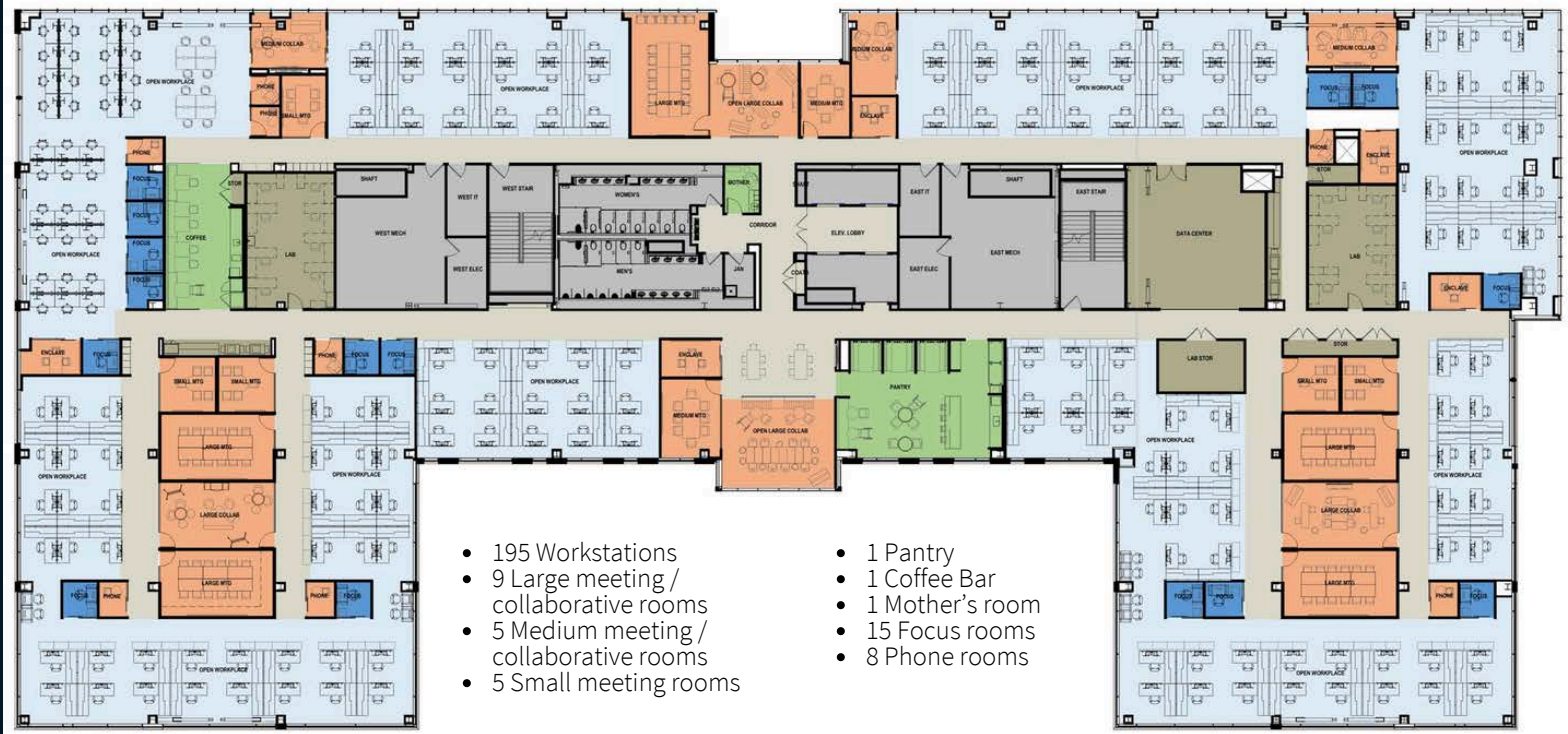
[Click Here to see all floor plans](#)



# Floor Plans

6th floor | 37,082 RSF  
As-built plan

 [Click for self-guided tour](#)



[Click Here to see all floor plans](#)

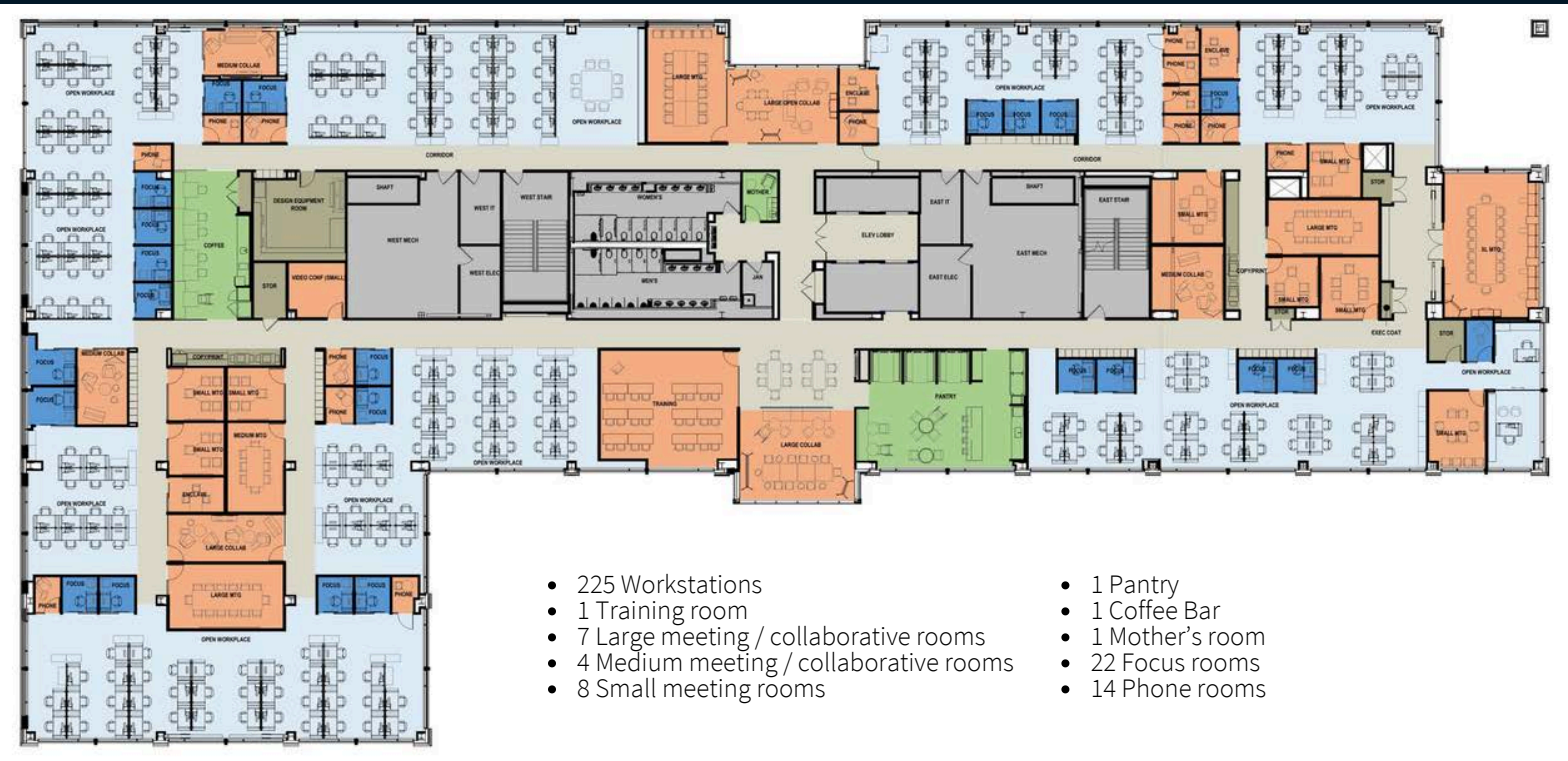


# Floor Plans

8th floor | 30,489 RSF  
As-built plan



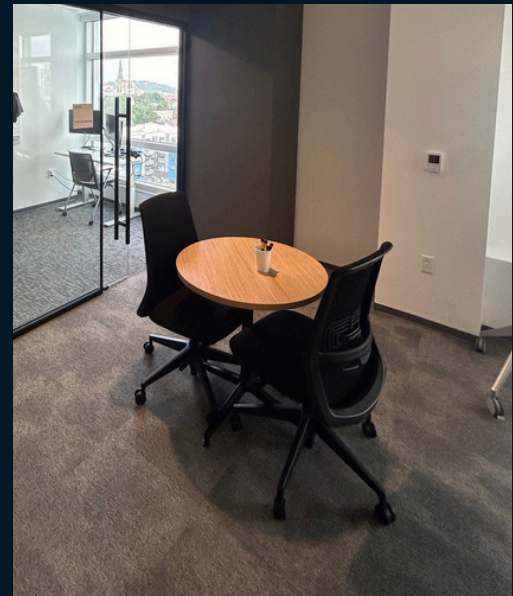
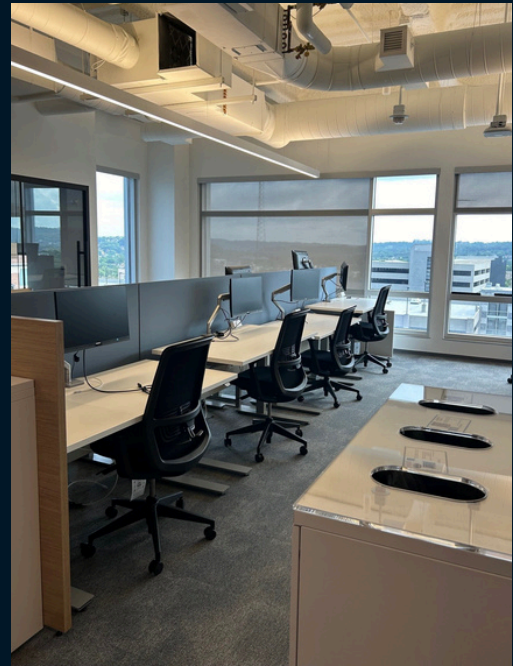
9th floor | 30,489 RSF  
As-built plan



[Click Here to see all floor plans](#)



# 8th Floor





# 9th Floor





# Amenities

Bakery Office Three | 6501 Living Place



**Bakery Square**  
*Live-Work-Play-Neighborhood*

## Bakery Square Amenities

### RETAIL AND SHOPPING

- 1 Target
- 2 Giant Eagle
- 3 Trader Joe's
- 4 Staples
- 5 Free People
- 6 Anthropologie
- 7 BHLDN Bridal
- 8 West Elm

### FOOD AND DRINK

- 9 BrewDog Pittsburgh
- 10 McDonald's
- 11 China Garden
- 12 China Buffet
- 13 Nrgize Juice
- 14 Jimmy John's
- 15 Alta Via Pizzeria
- 16 Galley Bakery Square
- 17 Panera
- 18 Tako Torta
- 19 Starbucks

### MISCELLANEOUS

- 20 LA Fitness
- 21 SpringHill Suites
- 22 East Liberty Garage

### ADDITIONAL LOCATION HIGHLIGHTS

- Hotel Indigo Pittsburgh (East Liberty) - 0.6 miles
- The Inn on Negley - 0.9 miles
- Hyatt House - 1.2 miles
- Carnegie Mellon University - 2 miles
- University of Pittsburgh - 2.8 miles
- Duquesne University - 4.7 miles

## Contact:

**Nick Francic**  
+1 412 208 1400  
[nick.francic@jll.com](mailto:nick.francic@jll.com)

**Mike Nelson**  
+1 412 208 1400  
[mike.nelson@jll.com](mailto:mike.nelson@jll.com)

