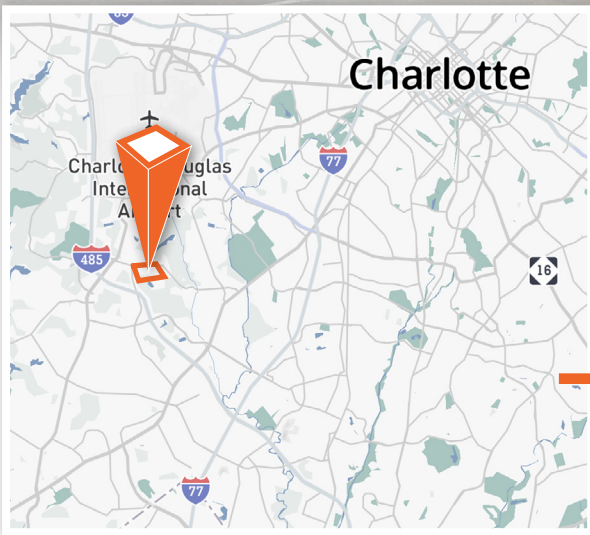
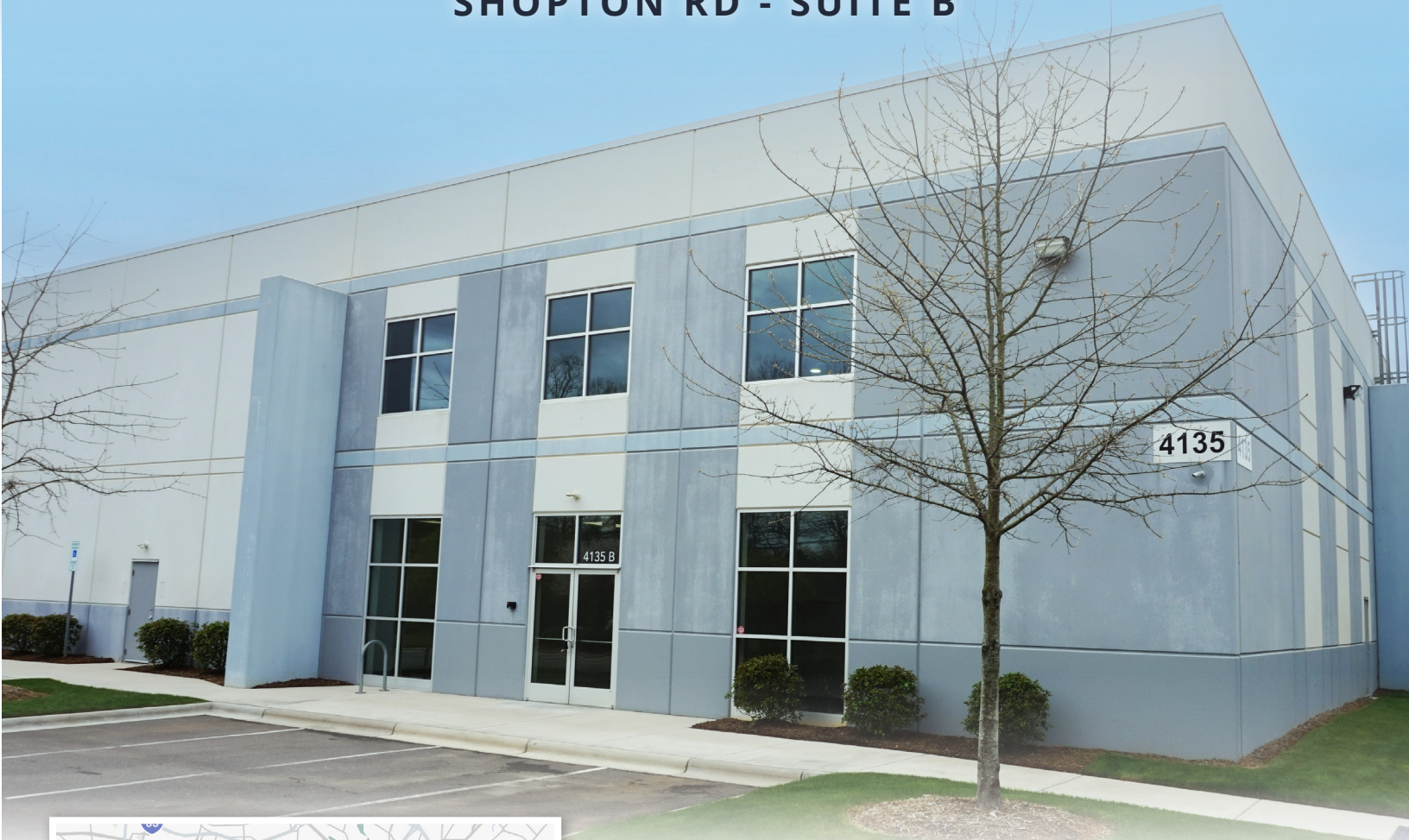


# 4135

SHOPTON RD - SUITE B



**± 26,400 sf**  
**Industrial Space at**  
**Two Shopton Ridge**

**CHARLOTTE, NORTH CAROLINA**

**Zach Simpson**  
Vice President  
704 315 5091  
zach.simpson@avisonyoung.com

**Henry Lobb, SIOR**  
Principal  
704 469 5964  
henry.lobb@avisonyoung.com

**AVISON  
YOUNG**



# INDUSTRIAL SPACE AT TWO SHOPTON RIDGE

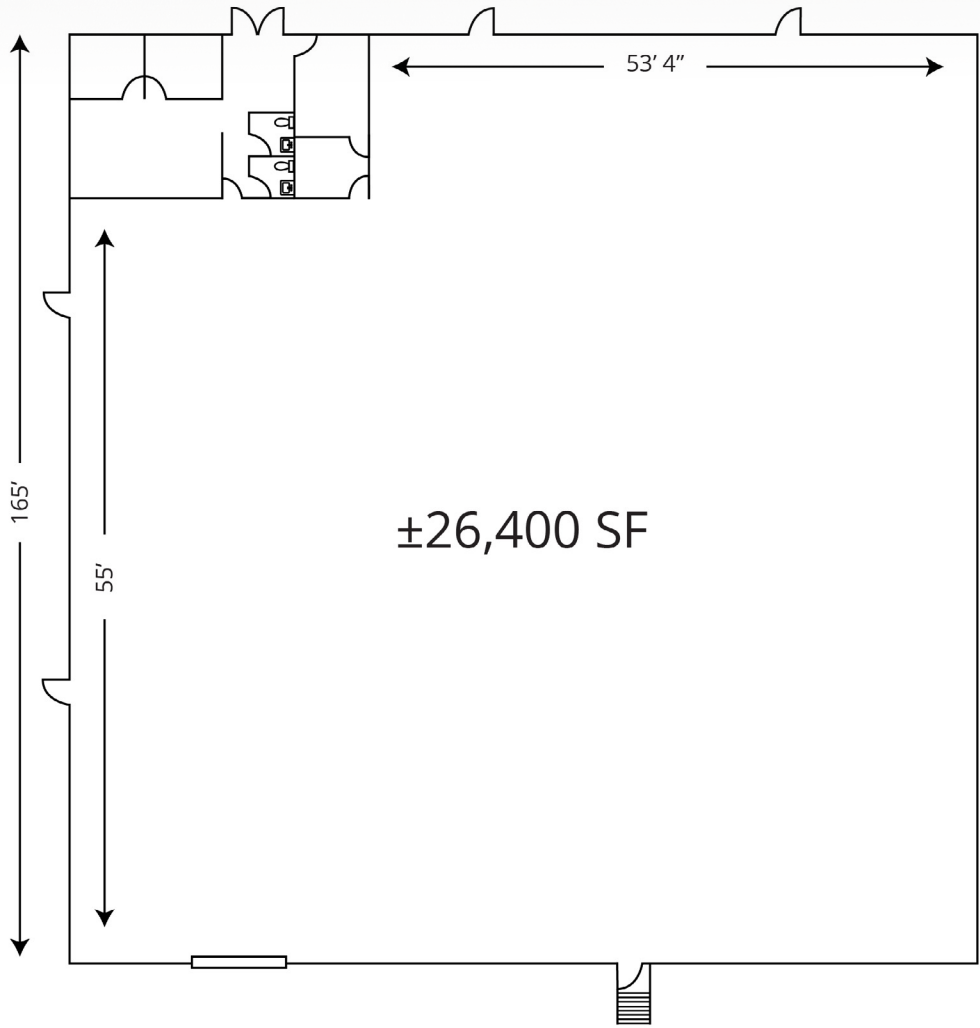
4135 Shopton Rd, Charlotte, NC

**Shopton Ridge Business Park** is a prime location for businesses, strategically positioned near major transportation routes for easy accessibility. Designed with a focus on a supportive business environment, the park offers essential amenities and infrastructure. Its close proximity to airports and intermodal facilities is advantageous

for logistics, while the surrounding well-developed infrastructure adds to its appeal. With potential for growth, business synergy, and a commitment to aesthetics and sustainability, Shopton Ridge presents an attractive opportunity for companies seeking a conducive and thriving workspace.

## Floor Plan

- Two (2) Private Offices
- One (1) Conference Room
- Two (2) Restrooms
- One (1) Breakroom
- Three (3) dock high doors
- One (1) drive-in door with ramp
- Four (4) knock-out panels



## Property details

County: Mecklenburg

Available SF: ±26,400 SF

Office SF: ±1,567 SF

Clear Height: 24'

Column Spacing: 53' 4" x 41' 3"

Dock High Doors: Three (3)

Knock-Out Panels: Four (4)

Drive-In Doors: One (1)

Sprinklers: ESFR

Parking: ±49 spaces

Lease Rate: Call Brokers



360° VIEW IT IN 3D

CLICK OR SCAN FOR OFFICE + WAREHOUSE VIEWS:





# INDUSTRIAL SPACE AT TWO SHOPTON RIDGE

4135 Shopton Rd, Charlotte, NC



INTERSTATE 485

**1.0 miles**



INTERSTATE 77

**4.5 miles**



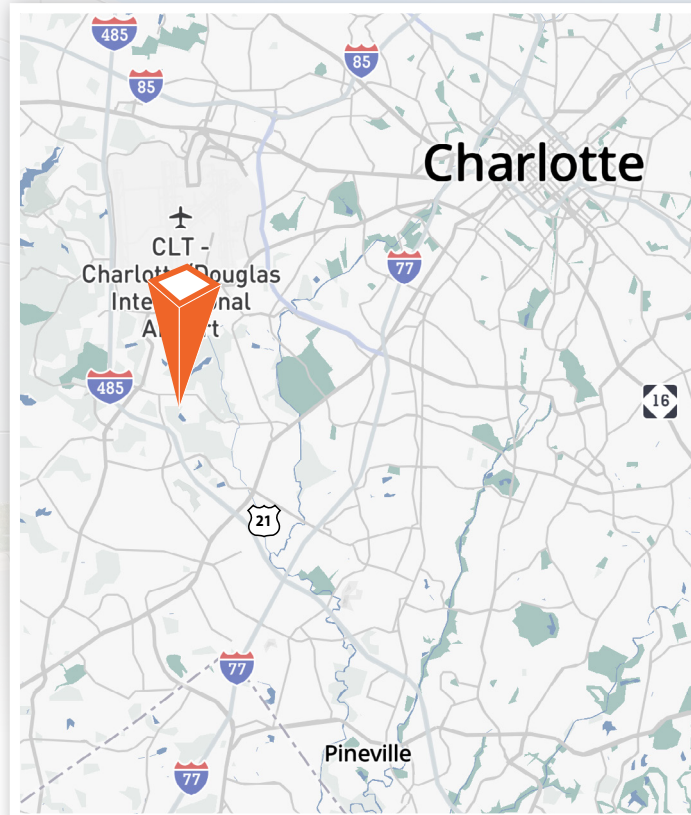
INTERSTATE 85

**6.7 miles**



CHARLOTTE DOUGLAS  
INTERNATIONAL AIRPORT

**2.2 miles**



## Location & travel

With **53% of the nation's population within a day's drive of the Charlotte region**, this property's location near the I-77 / I-485 interchange boasts a perfect regional access point.



**For more information:**

**Zach Simpson**

Vice President

704 315 5091

[zach.simpson@avisonyoung.com](mailto:zach.simpson@avisonyoung.com)

**Henry Lobb, SIOR**

Principal

704 469 5964

[henry.lobb@avisonyoung.com](mailto:henry.lobb@avisonyoung.com)

**AVISON  
YOUNG**