



PRICE: \$150,000

Mark Utley

(901) 494-7080

Mark@utleyproperties.com

PROPERTY DESCRIPTION

Prime Investment Property as it is located on the Historical Square of Holly Springs.

This is an ideal office location for a lawyer, real estate agent, accountant, etc. as it is located right across the street from the Marshall County courthouse.

The upstairs can be used as an apartment, and the rental market, on the square, is very strong.

The building is being sold as is. It will need some updating/renovating, but it does have a new roof.

SUMMARY

Property Type:

Commercial

Storefront Retail/Office

SF: 5,373

Price: \$150,000

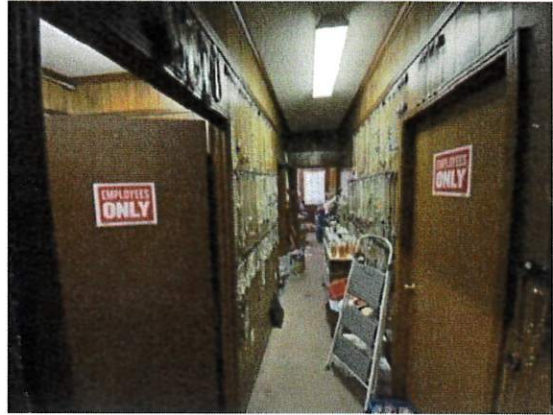
PHOTOS



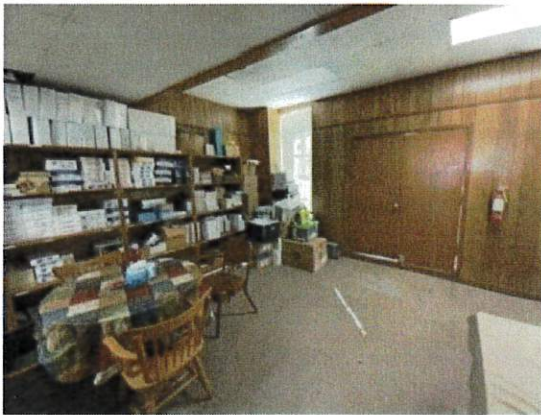
PHOTOS



Interior – 1st Floor



Interior – 1st Floor



Interior – 1st Floor Office



Interior – 2nd Floor Office

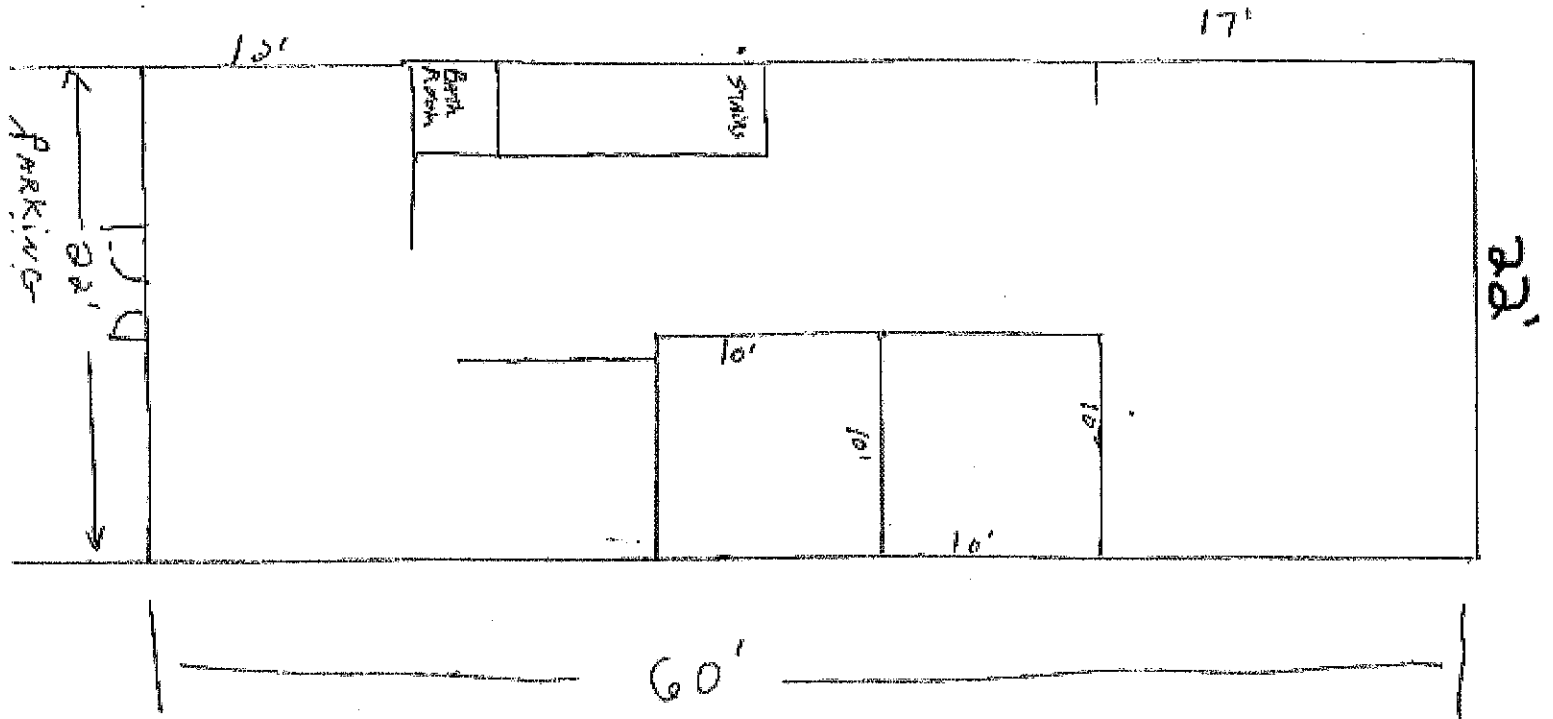


Interior – 2nd Floor Office

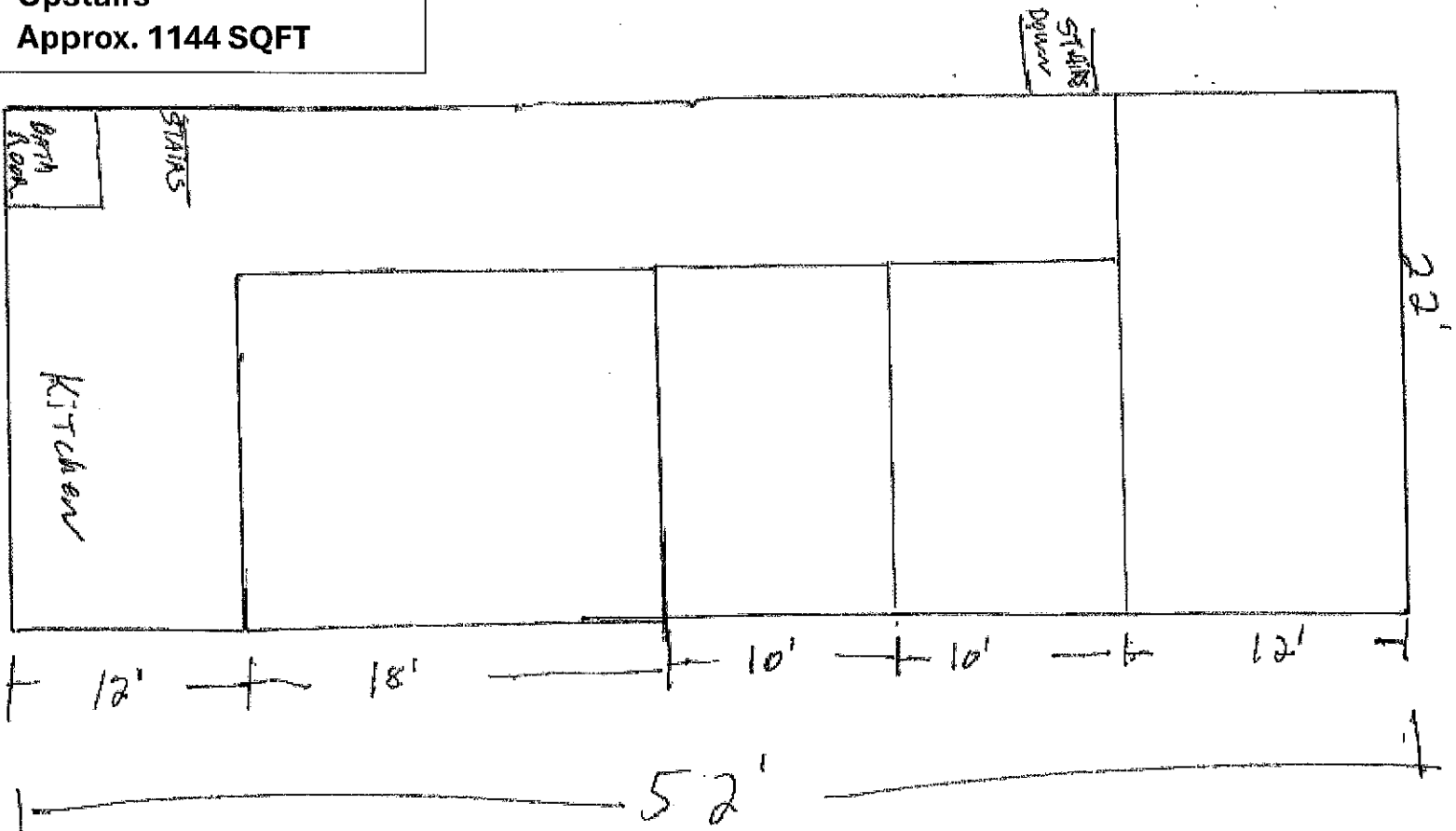


Interior – 2nd Floor Office

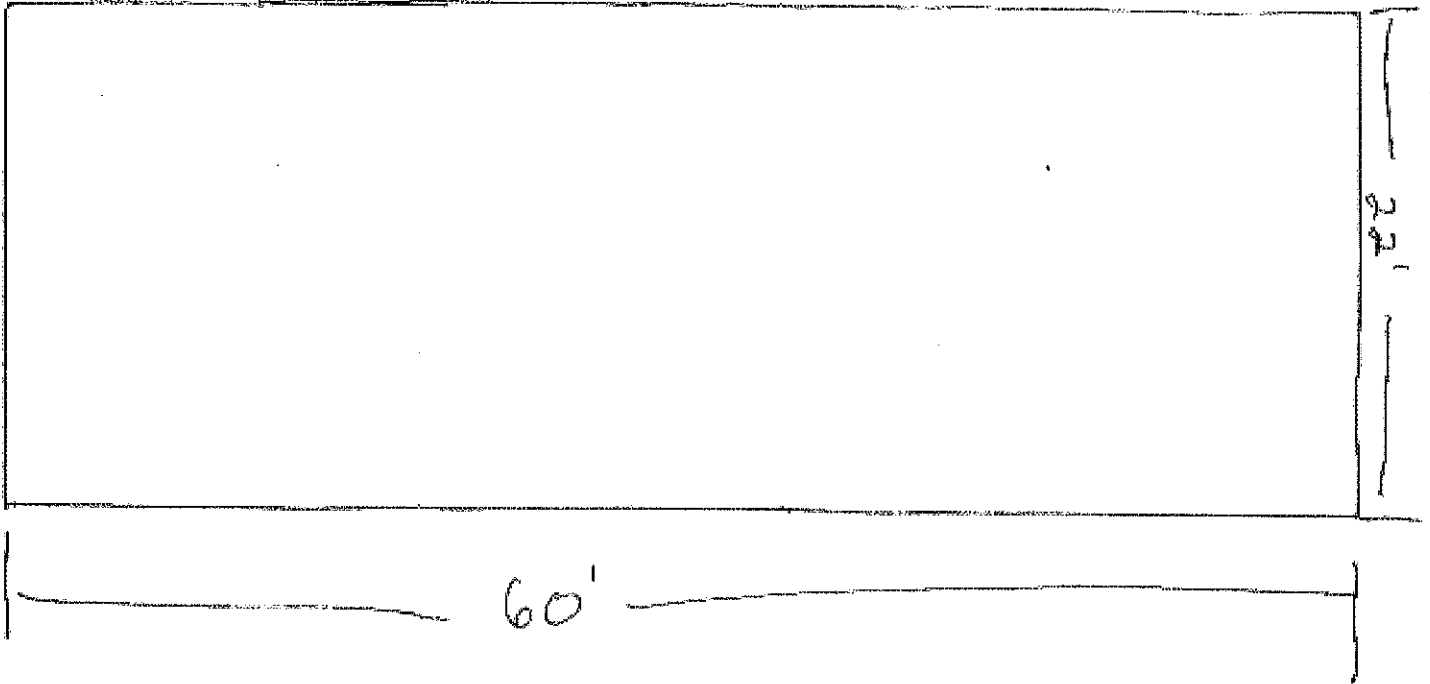
109 Van Dorn
First Floor
Approx. 1320 SQFT



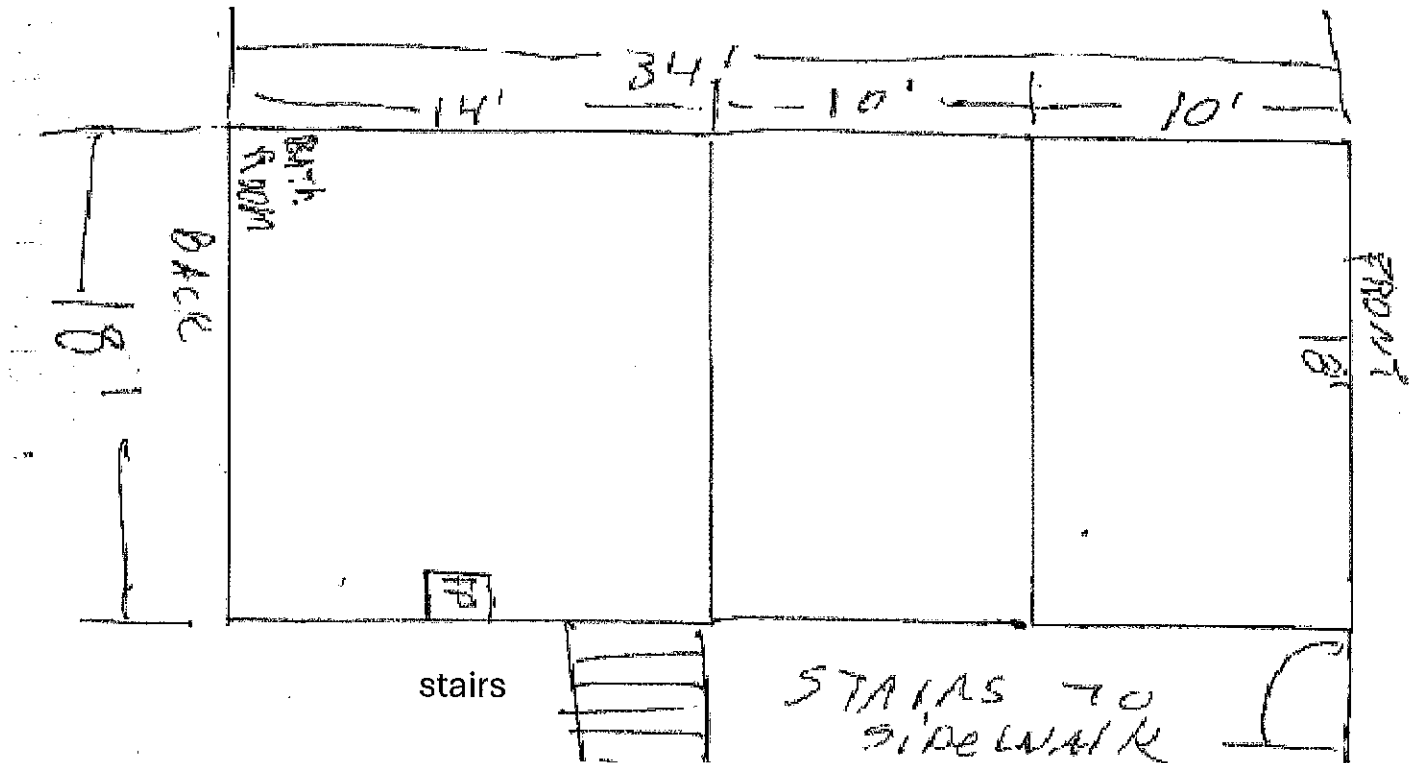
109 Van Dorn
Upstairs
Approx. 1144 SQFT



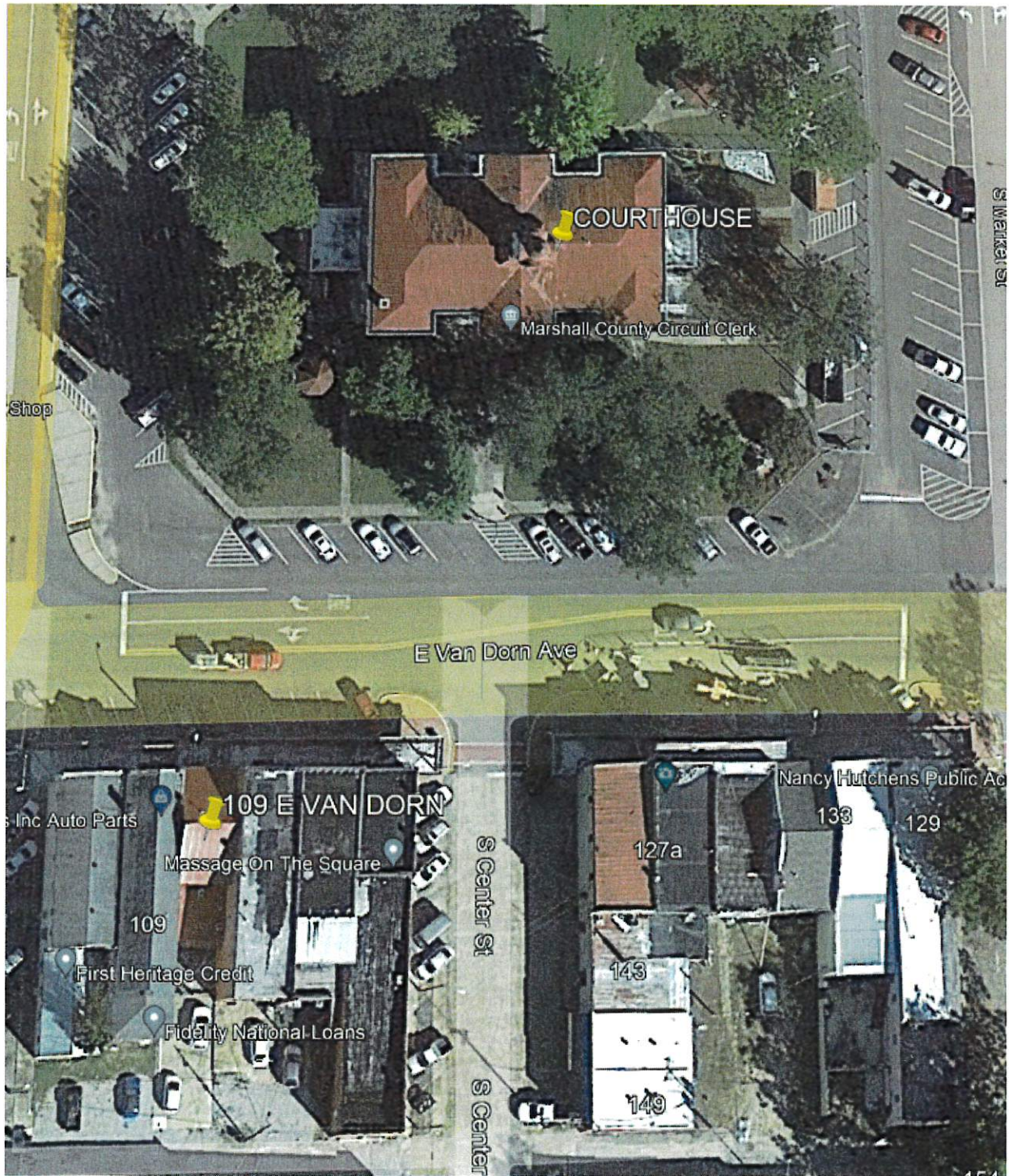
109 B Van Dorn
Approx. 1320 SQFT



109 B Van Dorn
Upstairs Apartment
Approx. 700 SQFT



LOCATION/AERIAL



LOCATION/AERIAL MAPS

