

VACANT INDUSTRIAL LAND FOR LEASE

Just East of USC Campus

LAND SQ.FT.: 5,500±



230 W 33RD STREET, LOS ANGELES, CA 90007

- 5,500 sq.ft. secure, gated and paved lot available
- Ideal for vehicle/truck/trailer parking, contractor's yard, pallet yard, etc.
- Located on the south side of 33rd St just west of Hill St
- 2 blocks east of the Harbor (110) Freeway — 4 blocks east of USC campus
- Just minutes south of Downtown Los Angeles
- Zoned LA M1 — Assessor's parcel number 5122-008-011
- Property delivered vacant to tenant
- Lease rental: \$4,000 per month (\$0.73 per sq.ft. gross)

For More Information, Please Contact:

SION KHAKSHOUR

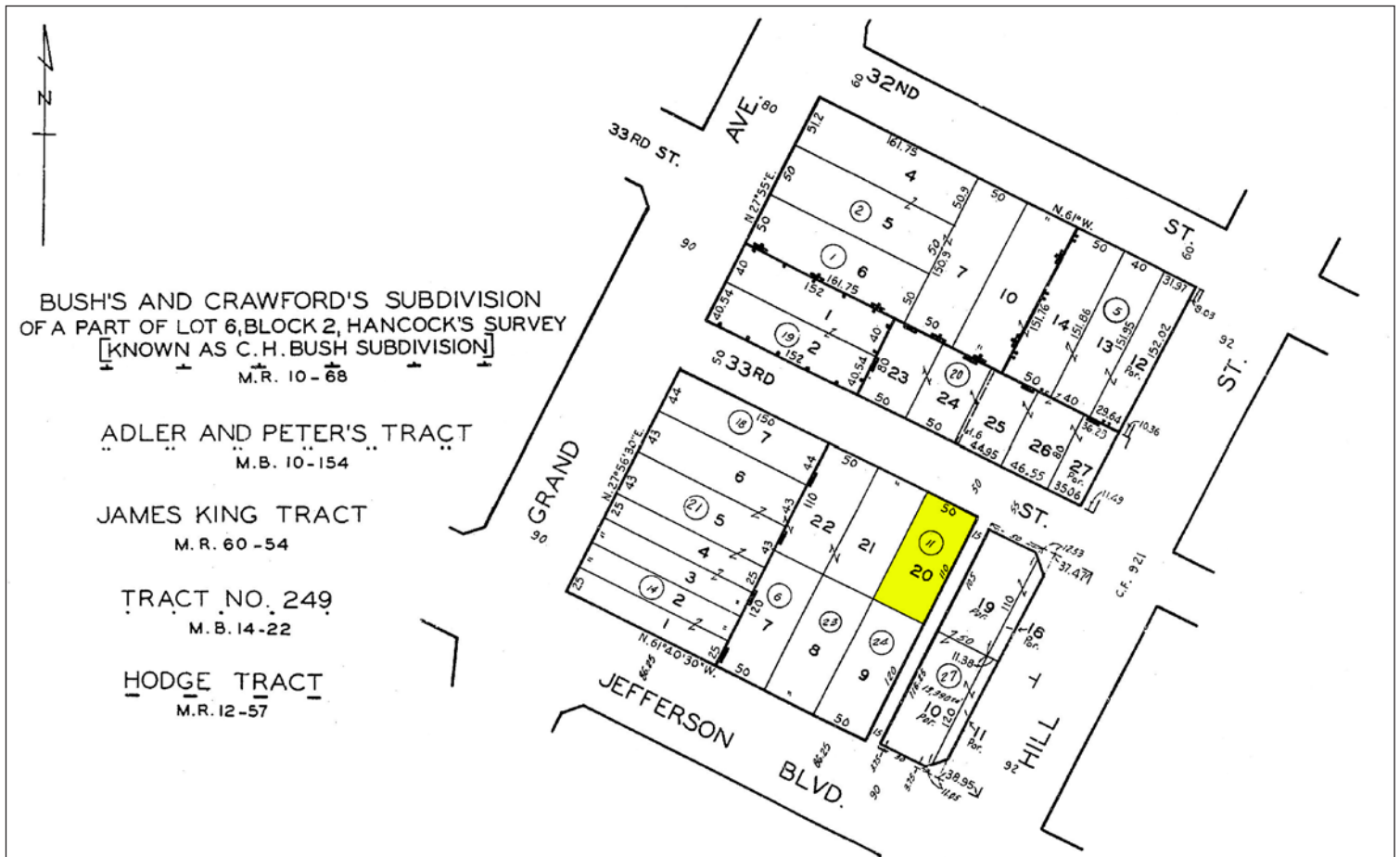
213-210-7492

sion@majorproperties.com

LIC. 00697373

The information contained herein is furnished by sources we deem reliable, but for which we assume no liability. It is given in confidence and with the understanding that all negotiations pertaining to the property be handled through the listing office. All measurements are approximate.

VACANT INDUSTRIAL LAND FOR LEASE



VACANT INDUSTRIAL LAND FOR LEASE

