

Sustainable
Island Products



OFFICE
SHOWROOM
→



LEASE

Kaloko Warehouse

73-5568 KALHOULA STREET

Kailua Kona, HI 96740

PRESENTED BY:

GREGORY OGIN

O: 808.329.6446

gogin@svn.com

HI #RB-16053

SUSIE SCRIBNER

O: 805.403.0301

susie.scribner@svn.com

Hawaii #RS-84227

PROPERTY SUMMARY



OFFERING SUMMARY

LEASE RATE:	\$1.75 SF/month (NNN)
NUMBER OF UNITS:	6
AVAILABLE SF:	7,125 SF
BUILDING SIZE:	16,184 SF

GREGORY OGIN
O: 808.329.6446
gogin@svn.com
HI #RB-16053

SUSIE SCRIBNER
O: 805.403.0301
susie.scribner@svn.com
Hawaii #RS-84227

KALO KO WAREHOUSE | 73-5568 Kalhoulā Street Kailua Kona, HI 96740



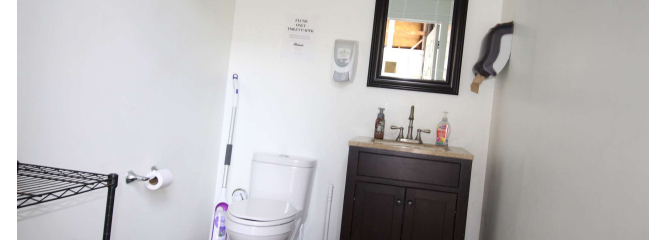
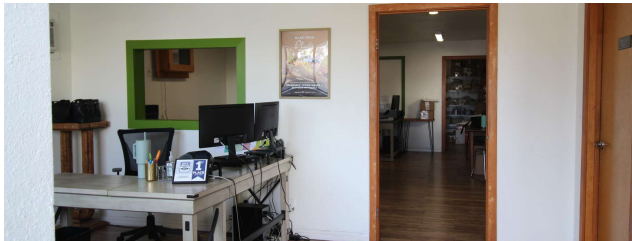
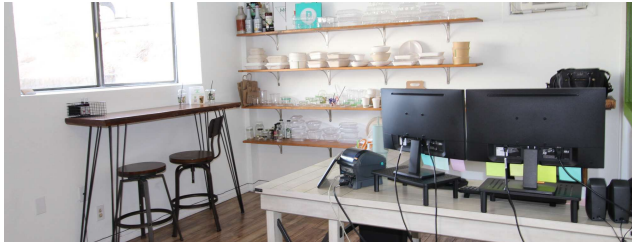
PROPERTY DESCRIPTION

Introducing a great opportunity to lease a warehouse space in the Kaloko Light Industrial Area below Home Depot. Offering a convenient and central location with a high bay door and ceiling, built out office area, restrooms and plenty of parking. 2025 estimated CAM \$0.31/SF/Mo. Available 6/1/25.

PROPERTY HIGHLIGHTS

- -Prime location in Kaloko Light Industrial Area
- -High bay warehouse with plenty of parking
- -Built out office space and restrooms
- -Storage racks available

ADDITIONAL PHOTOS



GREGORY OGIN

O: 808.329.6446

gogin@svn.com

HI #RB-16053

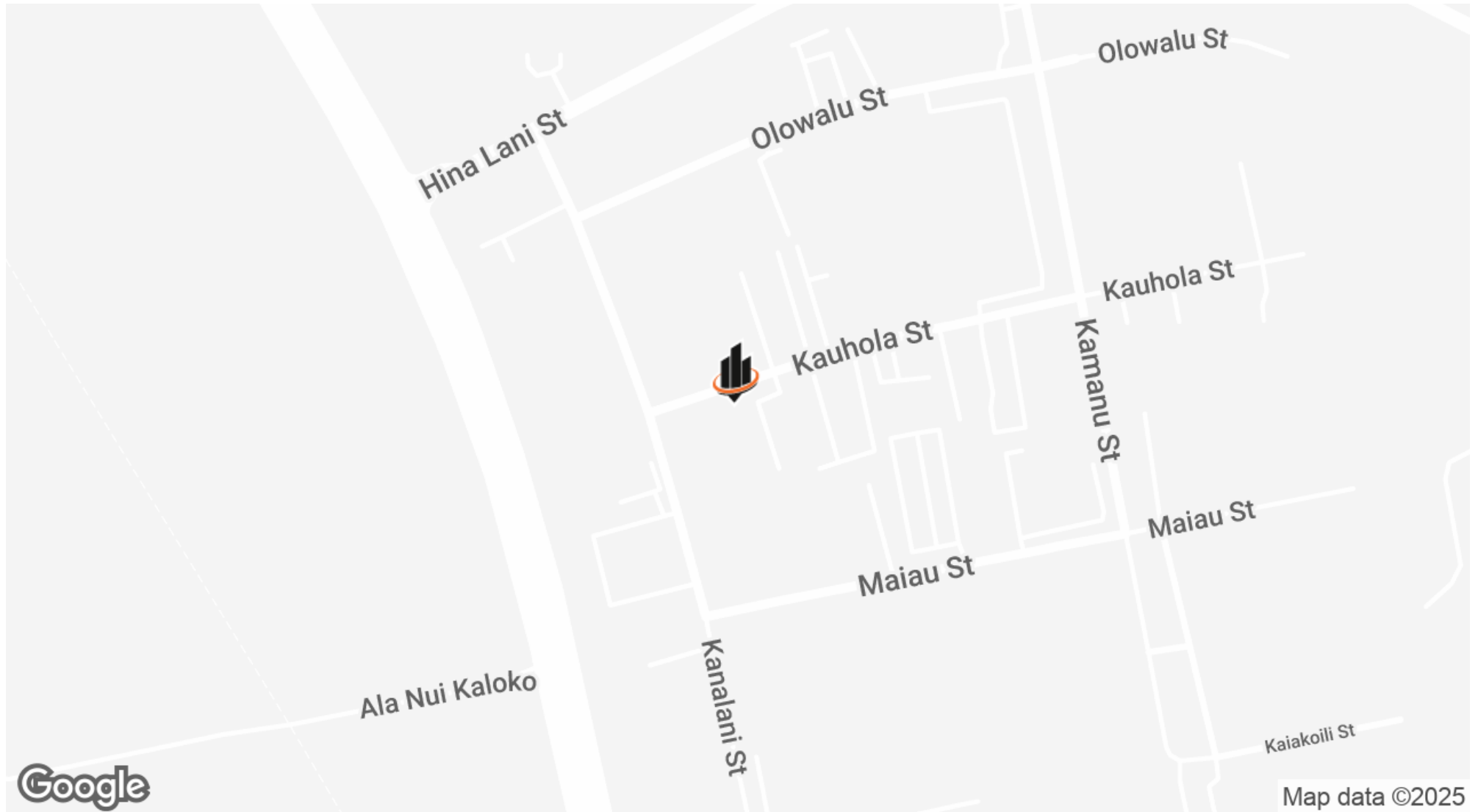
SUSIE SCRIBNER

O: 805.403.0301

susie.scribner@svn.com

Hawaii #RS-84227

LOCATION MAP

**GREGORY OGIN**

O: 808.329.6446

gogin@svn.com

HI #RB-16053

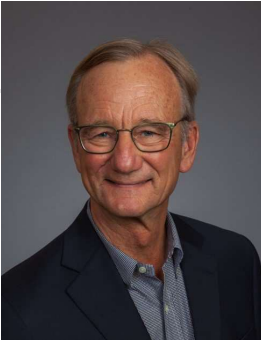
SUSIE SCRIBNER

O: 805.403.0301

susie.scribner@svn.com

Hawaii #RS-84227

ADVISOR BIO 1



GREGORY OGIN

Principal & Managing Director

gogin@svn.com
Direct: 808.329.6446 | Cell: 808.987.6446

HI #RB-16053

PROFESSIONAL BACKGROUND

Gregory G. Ogin, CCIM, CPM, serves as Principal and Managing Director of SVN | GO Commercial, a division of GO Commercial, LLC. Since 1996, he has brought the commercial division of the former Clark Realty Corporation from three buildings in Kailua-Kona to over 700,000 square feet on the island of Hawaii. Greg has managed properties since 1981, when he supervised and managed five resort stores and a 10,000 square foot resort department store for Liberty House of Hawaii Island. He was then appointed by the Mayor as Deputy Managing Director of the County of Hawaii, where he was in charge of County Operations in West Hawaii. Greg later owned a small, independent, commercial real estate firm which started as a division of Gerry Rott and Associates. Greg’s numerous activities include serving on the Board of Hawaii Island United Way, Lai Opua 2020, Kona Family YMCA and Hawaii Disciplinary Board (Hawaii BAR). He serves as President of Amfac Community Council, Rotary Club – Kailua-Kona, Kona Kohala Chamber of Commerce, past-President of Kauai Road Runners, and founding President of Children’s Advocacy Center. Greg also chairs the Hokulia Parks and Cultural Services Association, Kona Community Development Plan, and Kailua Village Improvement Plan.

EDUCATION

North Hennepin State University

SVN | GO Commercial
75-5722 Kuakini Highway Suite 214
Kailua Kona, HI 96740
808.329.6446

GREGORY OGIN	SUSIE SCRIBNER
O: 808.329.6446	O: 805.403.0301
gogin@svn.com	susie.scribner@svn.com
HI #RB-16053	Hawaii #RS-84227