

For Lease

CBRE

Former Captain D's

7801 Timberlake Road | 2,782 SF

Lynchburg, Virginia 24502 | www.cbre.com/richmond



Retail

Property Overview

7801 Timberlake Road is a freestanding restaurant building built in 1991 consisting of 2,782 square feet and situated on 0.612 acres. The Class C property is zoned B-3, Community Business. This former Captain D's (being vacated in March 2026) is located in a Kroger-anchored shopping center and is accompanied by surrounding retailers including Subway, Bruster's Real Ice Cream, Bojangles, 7Brew Coffee, Truist and more. The property has dedicated surface parking spaces.

2,782

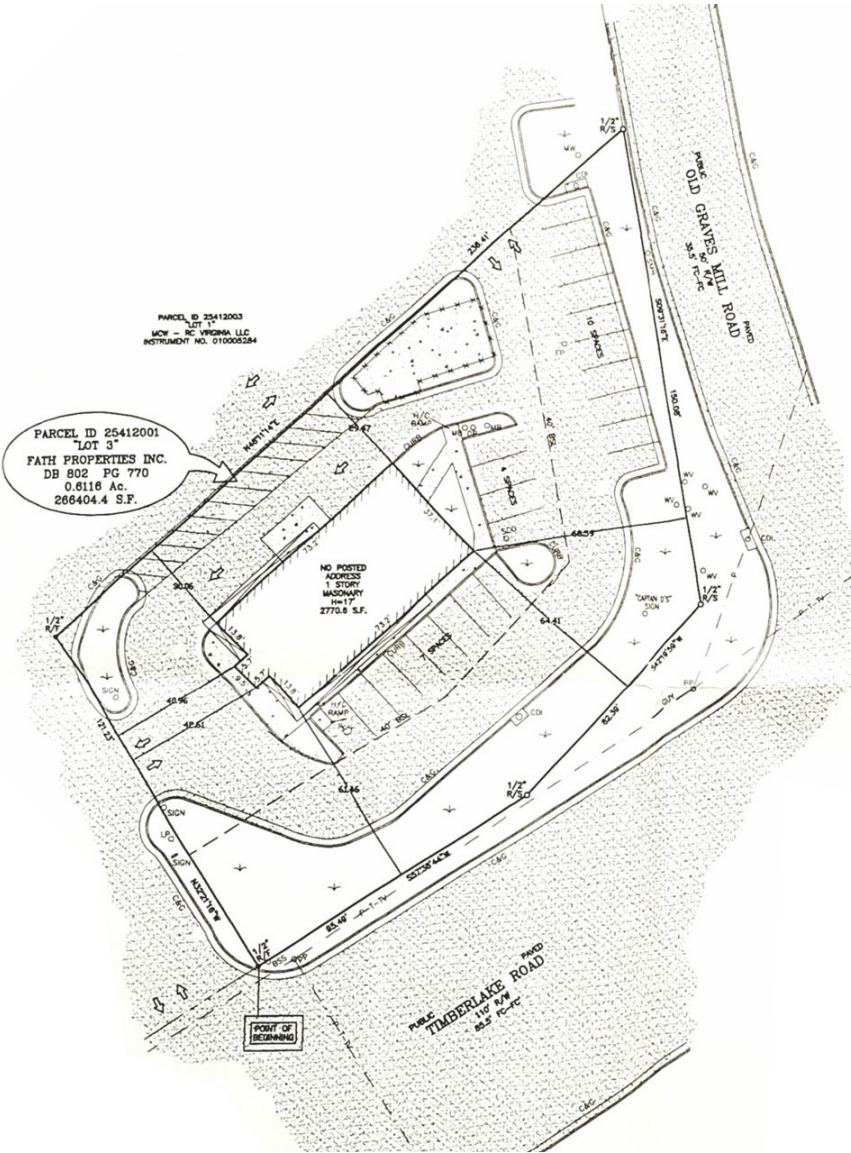
Available Square Footage

0.612

Available Acres

B-3

Zoning



88,986

Population
Within 5 Miles

\$90,166

Average Household Income
Within 5 Miles

\$69,100

Median Household Income
Within 5 Miles

33,701

Households
Within 5 Miles

43,199

Employees
Within 5 Miles

Contact Us

Pam Strieffler

Vice President

+1 804 201 2026

pam.strieffler@cbre.com

Ian Webster

Senior Associate

+1 804 201 2014

ian.webster@cbre.com

© 2025 CBRE, Inc. All rights reserved. This information has been obtained from sources believed reliable but has not been verified for accuracy or completeness. CBRE, Inc. makes no guarantee, representation or warranty and accepts no responsibility or liability as to the accuracy, completeness, or reliability of the information contained herein. You should conduct a careful, independent investigation of the property and verify all information. Any reliance on this information is solely at your own risk. CBRE and the CBRE logo are service marks of CBRE, Inc. All other marks displayed on this document are the property of their respective owners, and the use of such marks does not imply any affiliation with or endorsement of CBRE. Photos herein are the property of their respective owners. Use of these images without the express written consent of the owner is prohibited.