

3459 HOLCOMB BRIDGE RD

Norcross, GA 30092



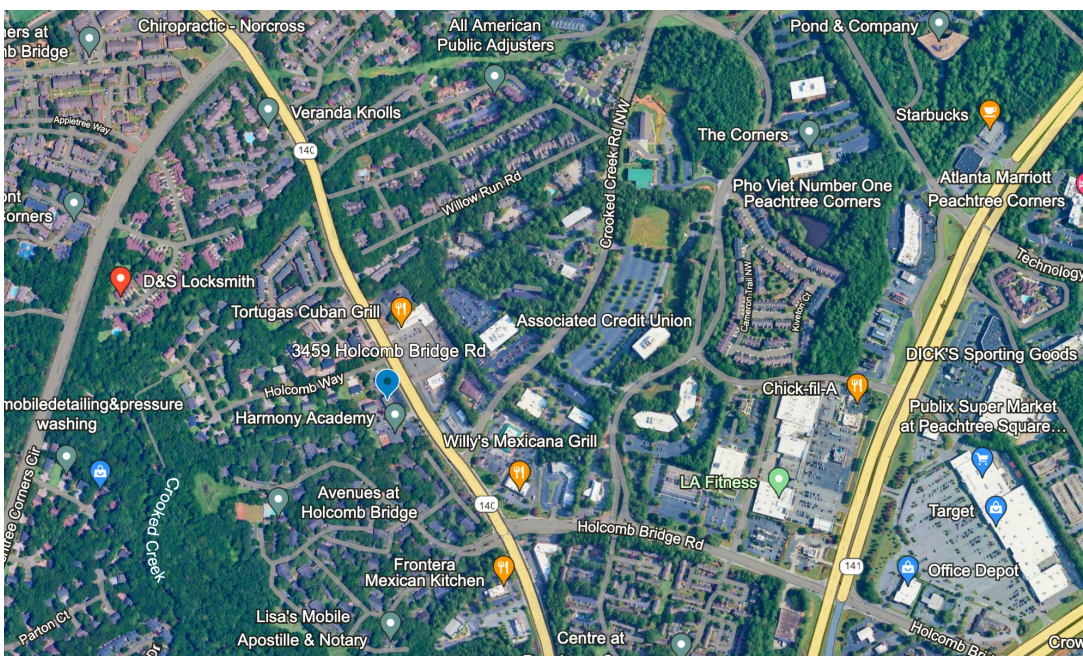
TRANSWESTERN

REAL ESTATE
SERVICES

AVAILABLE FOR OFFICE
OR MEDICAL OFFICE USE

3,109 SF TO 6,218 SF

VPD COUNT
APPROX. 40K



HIGHLIGHTS

- 3,109 SF to 6,218 SF
- Medical or Office Use
 - Previously built out as medical
- Highly visible presence with road signage available
 - 40k Vehicles Per Day
- Parking ratio of 4.7 spaces / 1,000 SF
- Majority of building renovated
- New roof, parking lot, and interior build out
- ADA compliant with ramp

CONTACT INFORMATION

AUSTIN HIBBARD

Senior Associate
404.814.1525
austin.hibbard@transwestern.com

BO STUART

Senior Associate
404.842.6556
bo.stuart@transwestern.com

MARSH HAZLEHURST

Associate
404.842.6574
marsh.hazlehurst@transwestern.com

The information provided herein was obtained from sources believed reliable; however, Transwestern makes no guarantees, warranties or representations as to the completeness of accuracy thereof. The presentation of this property is submitted subject to errors, omissions, change of price or conditions, prior to sale or lease, or withdrawal without notice. Copyright © 2024 Transwestern.

3459 HOLCOMB BRIDGE RD

Norcross, GA 30092



TRANSWESTERN

REAL ESTATE
SERVICES

AVAILABLE FOR OFFICE
OR MEDICAL OFFICE USE

3,109 SF TO 6,218 SF

VPD COUNT
APPROX. 40K



CONTACT INFORMATION

AUSTIN HIBBARD

Senior Associate
404.814.1525
austin.hibbard@transwestern.com

BO STUART

Senior Associate
404.842.6556
bo.stuart@transwestern.com

MARSH HAZLEHURST

Associate
404.842.6574
marsh.hazlehurst@transwestern.com

The information provided herein was obtained from sources believed reliable; however, Transwestern makes no guarantees, warranties or representations as to the completeness of accuracy thereof. The presentation of this property is submitted subject to errors, omissions, change of price or conditions, prior to sale or lease, or withdrawal without notice. Copyright © 2024 Transwestern.

3459 HOLCOMB BRIDGE RD

Norcross, GA 30092



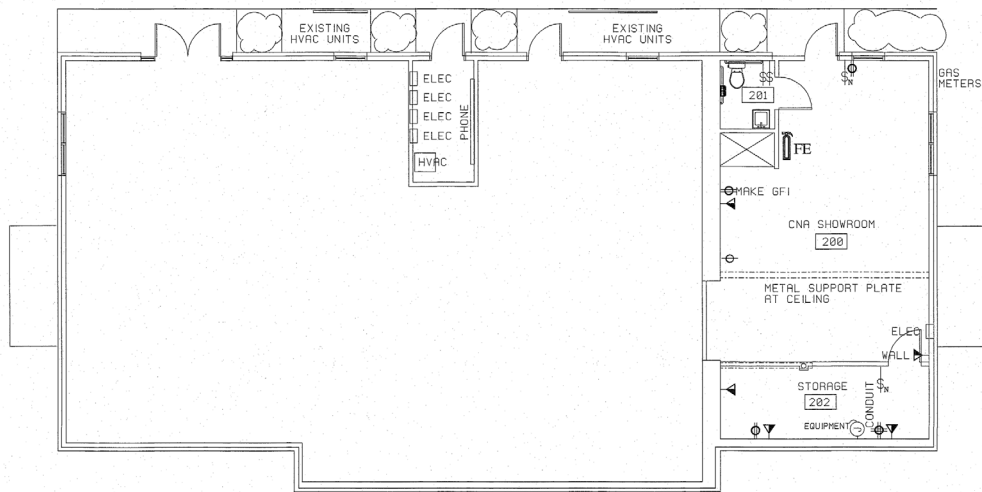
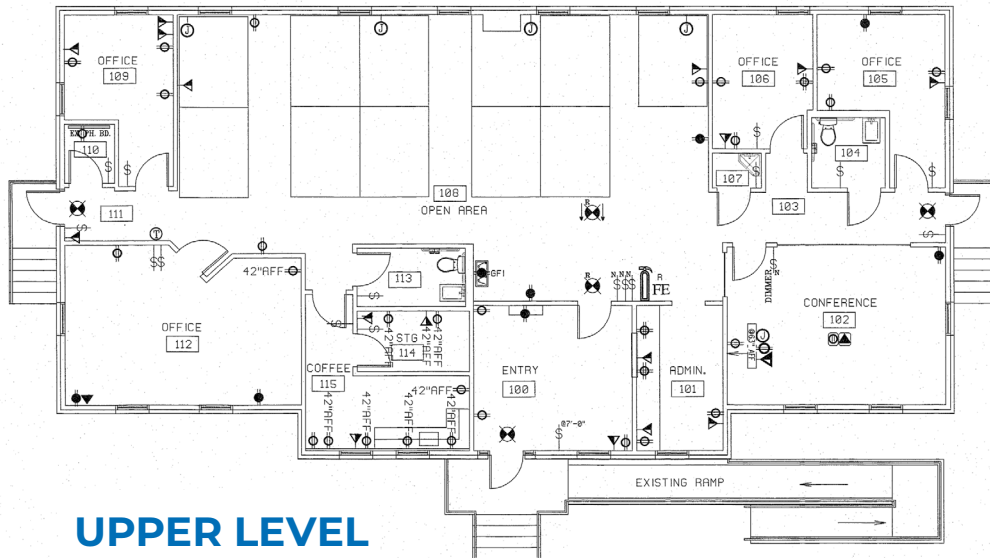
TRANSWESTERN

REAL ESTATE
SERVICES

AVAILABLE FOR OFFICE
OR MEDICAL OFFICE USE

3,109 SF TO 6,218 SF

VPD COUNT
APPROX. 40K



CONTACT INFORMATION

AUSTIN HIBBARD

Senior Associate
404.814.1525
austin.hibbard@transwestern.com

BO STUART

Senior Associate
404.842.6556
bo.stuart@transwestern.com

MARSH HAZLEHURST

Associate
404.842.6574
marsh.hazlehurst@transwestern.com

The information provided herein was obtained from sources believed reliable; however, Transwestern makes no guarantees, warranties or representations as to the completeness of accuracy thereof. The presentation of this property is submitted subject to errors, omissions, change of price or conditions, prior to sale or lease, or withdrawal without notice. Copyright © 2024 Transwestern.