

2145 CYPRESS RIDGE BLVD # 202, WESLEY CHAPEL, FL

FOR LEASE 3,058 SF 2nd Floor Office space

Prime SR 56 Location
Exceptional Visibility
Monument & Building Signage

Luis Cardenas
Senior Associate
C: 813.830.2031
luis@nyecommercial.com



4875 Bruce B. Downs Blvd., Wesley Chapel, FL 33544 | nyecommercial.com

FOR LEASE | 3,058 SF SECOND-FLOOR OFFICE SPACE

2145 Cypress Ridge Blvd # 202, Wesley Chapel, FL 33544



PROPERTY DESCRIPTION

Position your business in one of the most prominent and rapidly growing corridors in the region. This ±3,058 square foot second-floor office suite offers premier frontage along State Road 56, just off Interstate 75, with an impressive 83,000 vehicles per day providing unmatched exposure and brand visibility. This building benefits from direct exposure on SR 56 a dominant east-west commercial corridor serving one of the area's fastest-growing submarkets with ample on-site parking. Ideal for professional, medical, financial, legal, consulting, or corporate office users seeking high traffic counts, strong demographics, and convenient regional access.

PROPERTY HIGHLIGHTS

- Fronting on SR 56 with 83,000 AADT
- Building / monument signage available
- Easy Access by Traffic Light | Easy Access to I-75 & I-275
- Cypress Creek is the first left turn off of I-75 and State Road 56 with high visibility and signage opportunity
- Furnished Turnkey Office

Luis Cardenas

Senior Associate

C: 813.830.2031

luis@nyecommercial.com

OFFERING SUMMARY

Lease Rate:	\$25 SF/yr (NNN)
Available SF:	3,058 SF

DEMOGRAPHICS	1 MILE	3 MILES	5 MILES
Total Households	2,059	19,778	52,620
Total Population	5,866	55,175	145,818
Average HH Income	\$134,571	\$138,983	\$138,106



FOR LEASE | 3,058 SF SECOND-FLOOR OFFICE SPACE

2145 Cypress Ridge Blvd # 202, Wesley Chapel, FL 33544



Luis Cardenas
Senior Associate
C: 813.830.2031
luis@nyecommercial.com



4875 Bruce B. Downs Blvd., Wesley Chapel, FL 33544 | nyecommercial.com

Interior Images

2145 Cypress Ridge Blvd # 202, Wesley Chapel, FL 33544



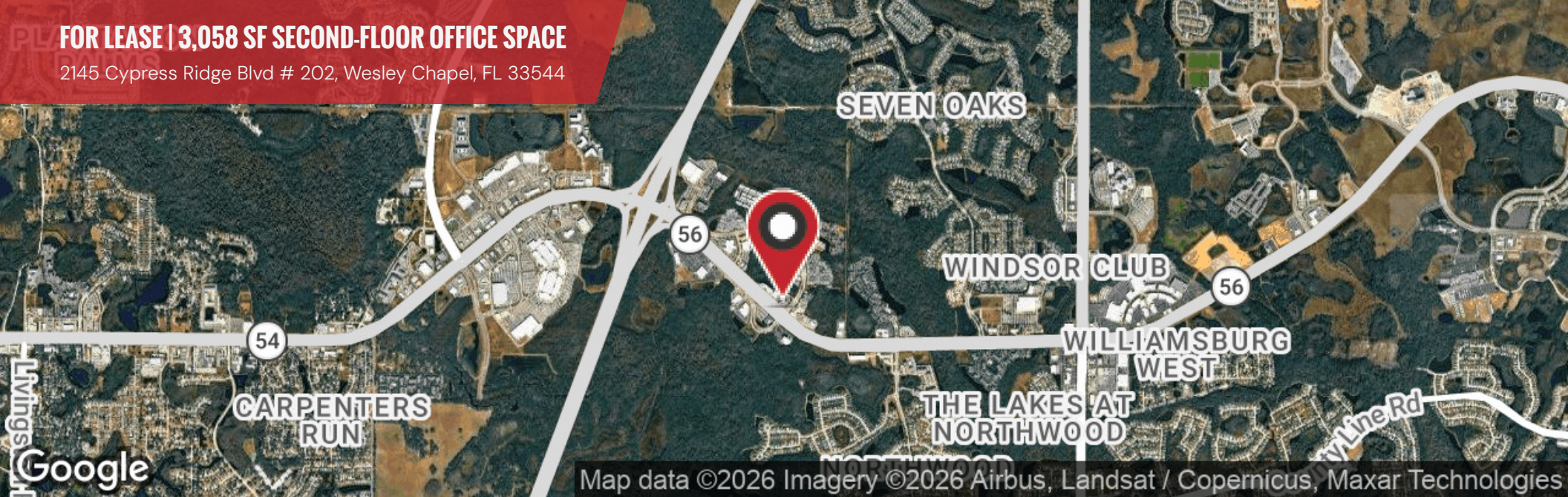
Luis Cardenas
Senior Associate
C: 813.830.2031
luis@nyecommercial.com



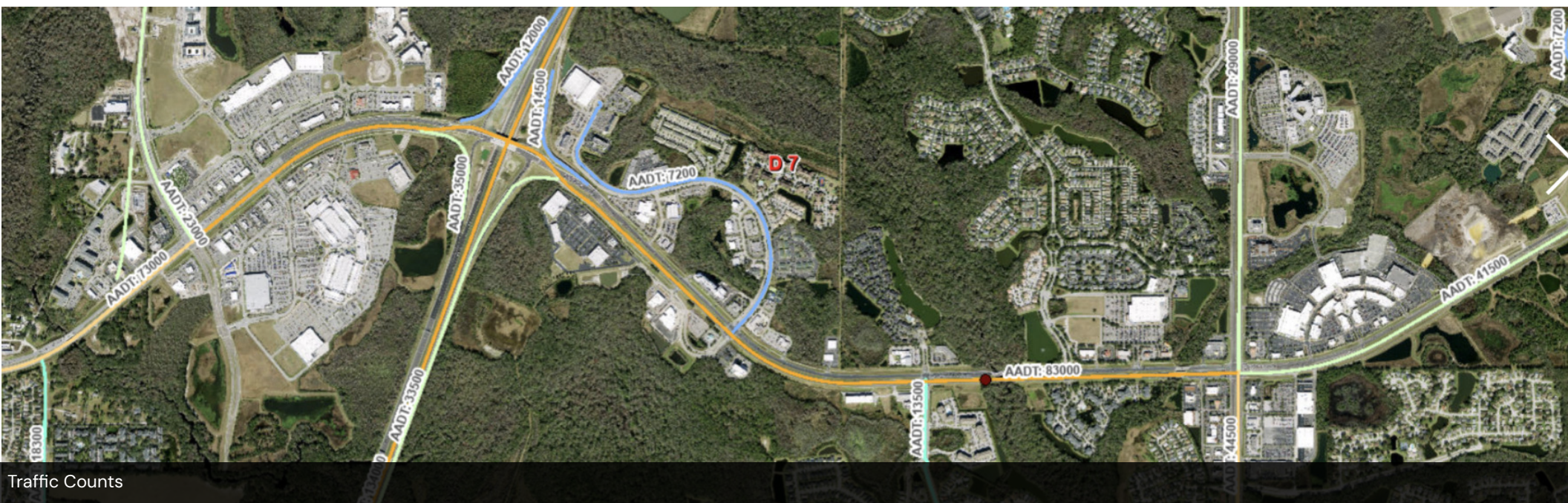
4875 Bruce B. Downs Blvd., Wesley Chapel, FL 33544 | nyecommercial.com

FOR LEASE | 3,058 SF SECOND-FLOOR OFFICE SPACE

2145 Cypress Ridge Blvd # 202, Wesley Chapel, FL 33544



Map data ©2026 Imagery ©2026 Airbus, Landsat / Copernicus, Maxar Technologies



Traffic Counts

Luis Cardenas
Senior Associate
C: 813.830.2031
luis@nyecommercial.com

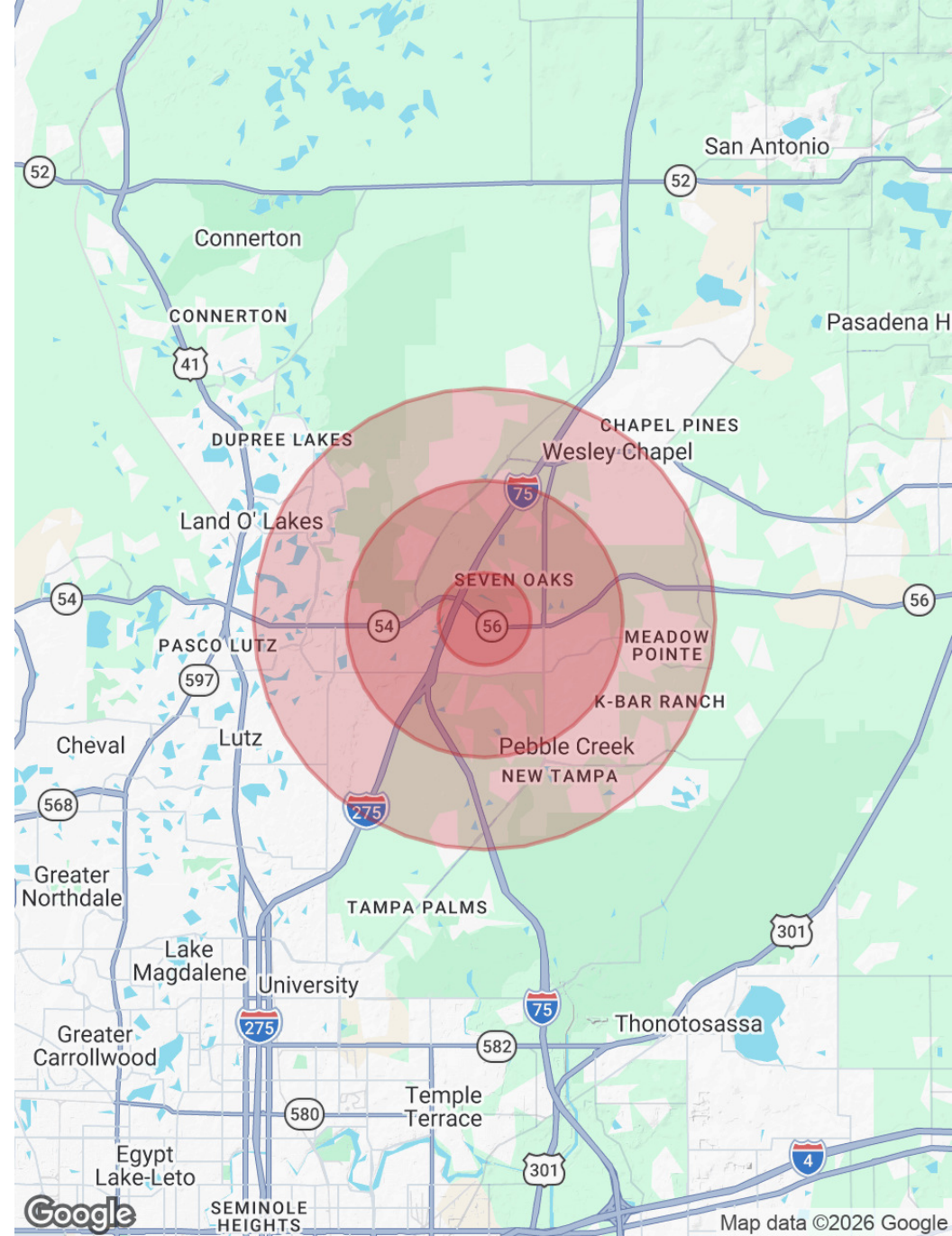


FOR LEASE | 3,058 SF SECOND-FLOOR OFFICE SPACE

2145 Cypress Ridge Blvd # 202, Wesley Chapel, FL 33544

POPULATION	1 MILE	3 MILES	5 MILES
Total Population	5,866	55,175	145,818
Average Age	36	39	39
Average Age (Male)	35	38	38
Average Age (Female)	37	40	40
HOUSEHOLDS & INCOME	1 MILE	3 MILES	5 MILES
Total Households	2,059	19,778	52,620
# of Persons per HH	2.8	2.8	2.8
Average HH Income	\$134,571	\$138,983	\$138,106
Average House Value	\$536,243	\$463,389	\$450,184
TRAFFIC COUNTS	1 MILE	3 MILES	5 MILES
	83,000/day		

2020 American Community Survey (ACS)



Luis Cardenas
 Senior Associate
 C: 813.830.2031
 luis@nyecommercial.com



4875 Bruce B. Downs Blvd., Wesley Chapel, FL 33544 | nyecommercial.com

Nearby retailers

2145 Cypress Ridge Blvd # 202, Wesley Chapel, FL 33544



Luis Cardenas
 Senior Associate
 C: 813.830.2031
 luis@nyecommercial.com



FOR LEASE | 3,058 SF SECOND-FLOOR OFFICE SPACE

2145 Cypress Ridge Blvd # 202, Wesley Chapel, FL 33544



LUIS CARDENAS

Senior Associate

Direct: 813.973.0214 **Cell:** 813.830.2031
luis@nyecommercial.com

FL #SL3535034

Luis Cardenas
Senior Associate
C: 813.830.2031
luis@nyecommercial.com



4875 Bruce B. Downs Blvd., Wesley Chapel, FL 33544 | nyecommercial.com