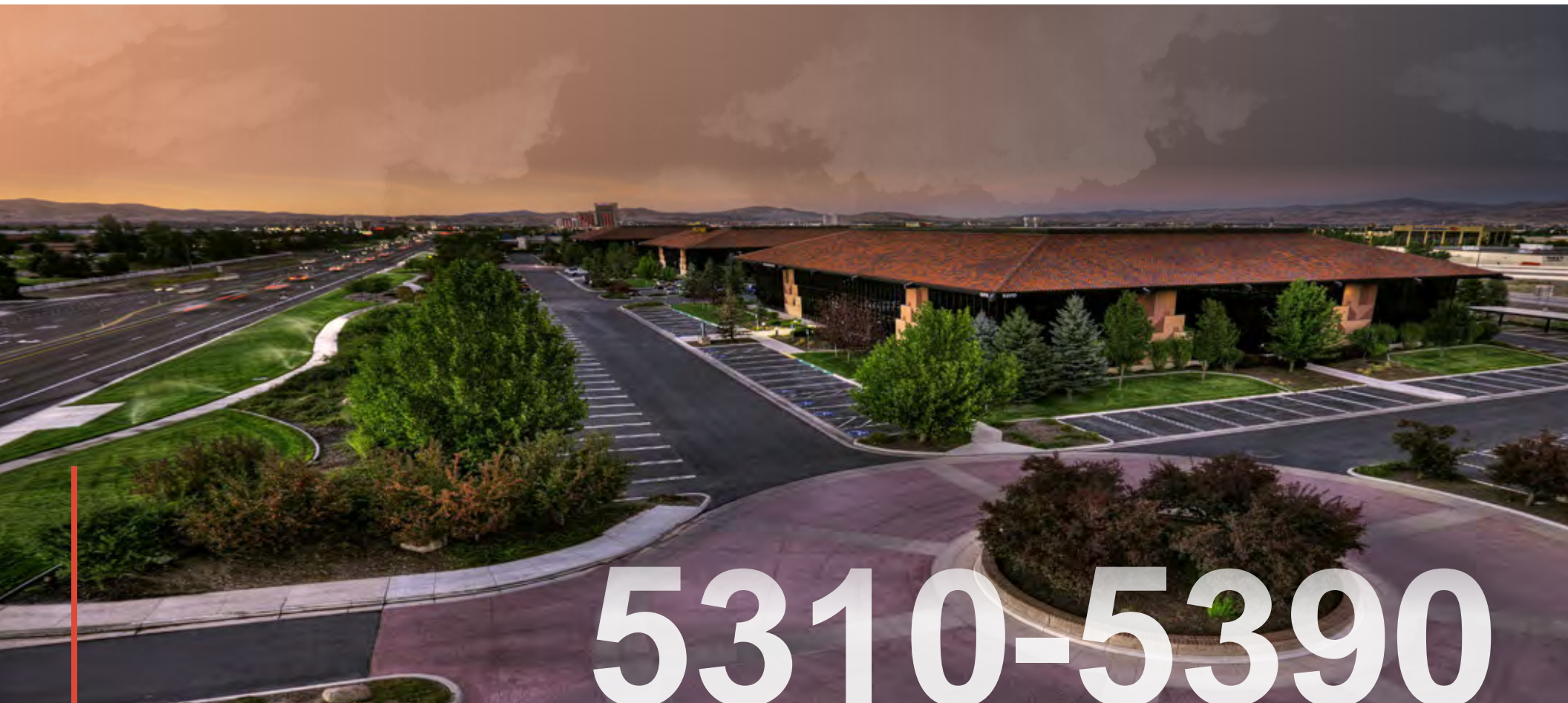


±232,000 SQUARE FEET

CLASS A FOUR BUILDING PROFESSIONAL OFFICE COMPLEX



5310-5390

**KIETZKE LANE**

RENO, NEVADA 89511

LEASE OPPORTUNITY | RENO'S PREMIER CORPORATE ADDRESS





# Get An Inside Look

Located in the Meadowood Submarket, Reno's most central location. We use the highest building standards in Northern Nevada. We offer flexible deal structures that include "turn-key" tenant improvements and Tenant Improvement Allowances. We enjoy working with tenants to create the best possible buildout for their needs and to create the right image their company wants to portray to their clients.

±232,000 SQUARE FEET

CLASS A FOUR BUILDING PROFESSIONAL OFFICE COMPLEX

**BUILDING 1**

5310 Kietzke Lane

**100% Leased**

**BUILDING 2**

5340 Kietzke Lane

**Suite 203**

4,346 SF Available  
Lease Rate Negotiable

**BUILDING 3**

5370 Kietzke Lane

**Suite 103**

6,030 SF Available  
Lease Rate Negotiable

**Suite 201**

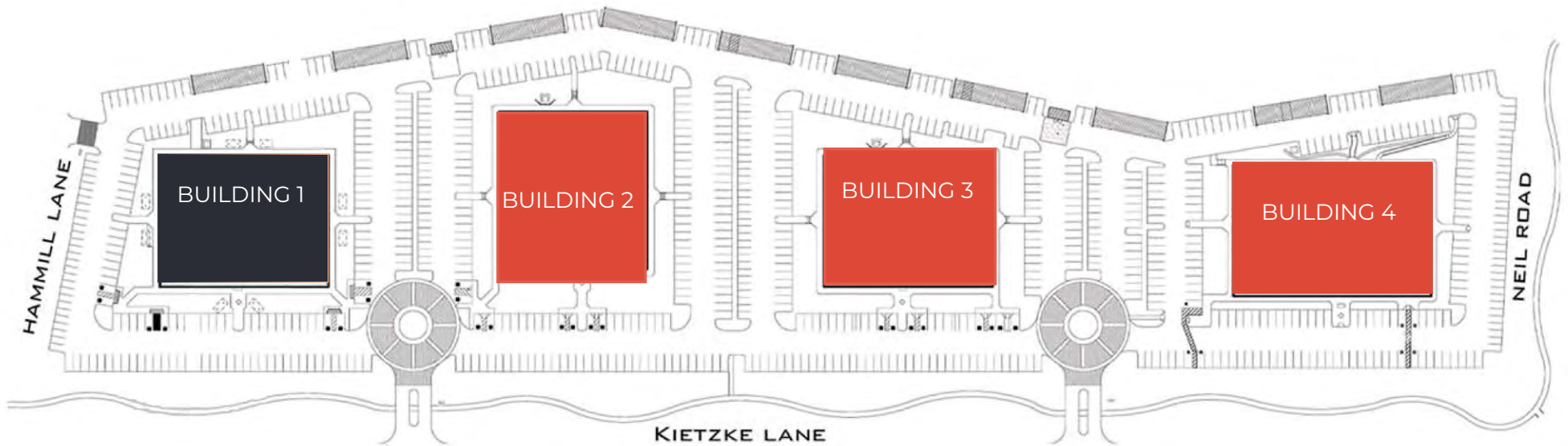
4,183 SF  
Available 4/2027  
Lease Rate Negotiable

**BUILDING 4**

5390 Kietzke

**Suite 103**

7,579 SF  
Available 2/2027  
Lease Rate Negotiable



±232,000 SQUARE FEET

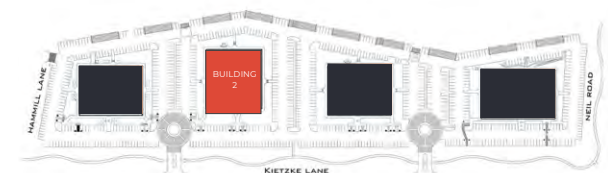
CLASS A FOUR BUILDING PROFESSIONAL OFFICE COMPLEX

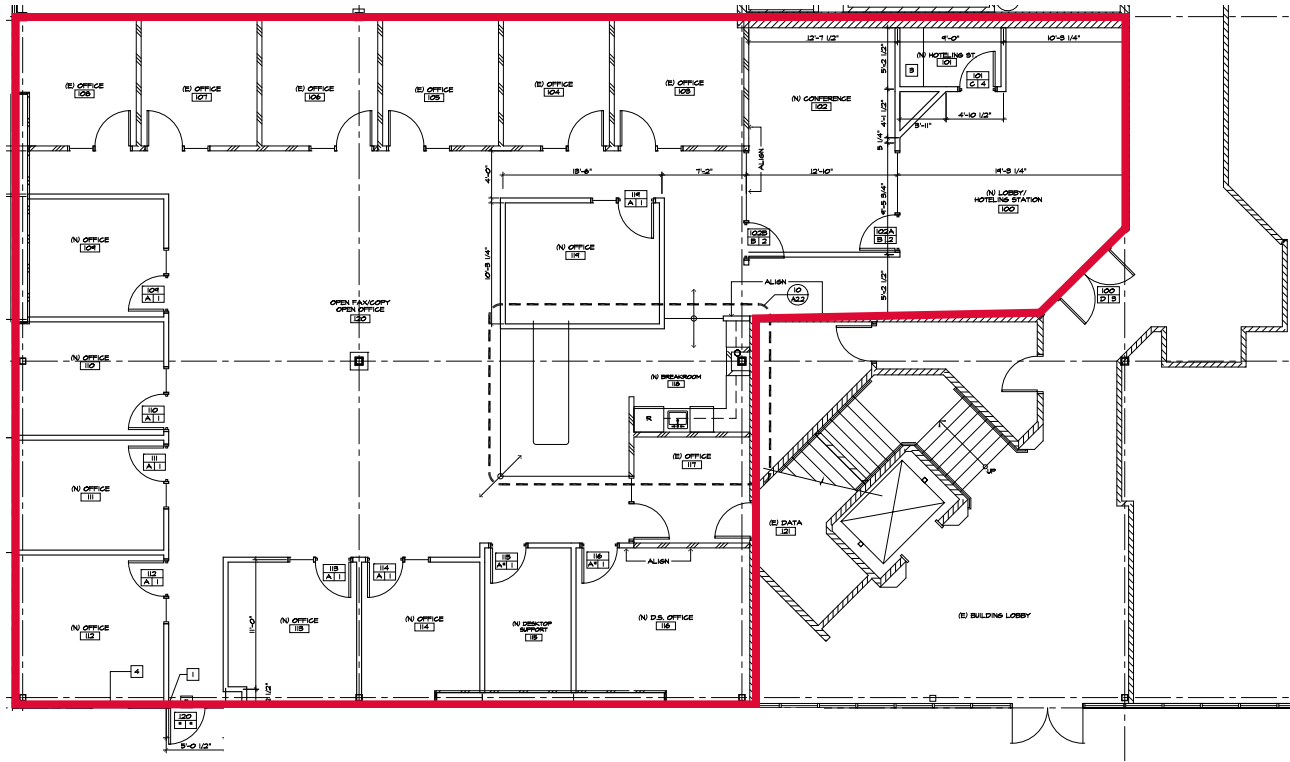


**BUILDING 2**  
5340 Kietzke Lane

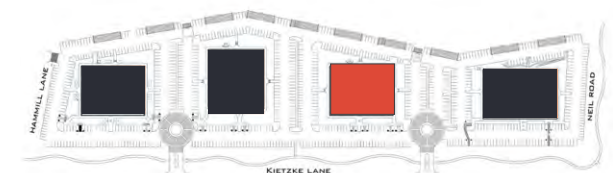
**Suite 203**  
4,346 SF Available

Conceptual Floor Plan  
Space in Shell Condition



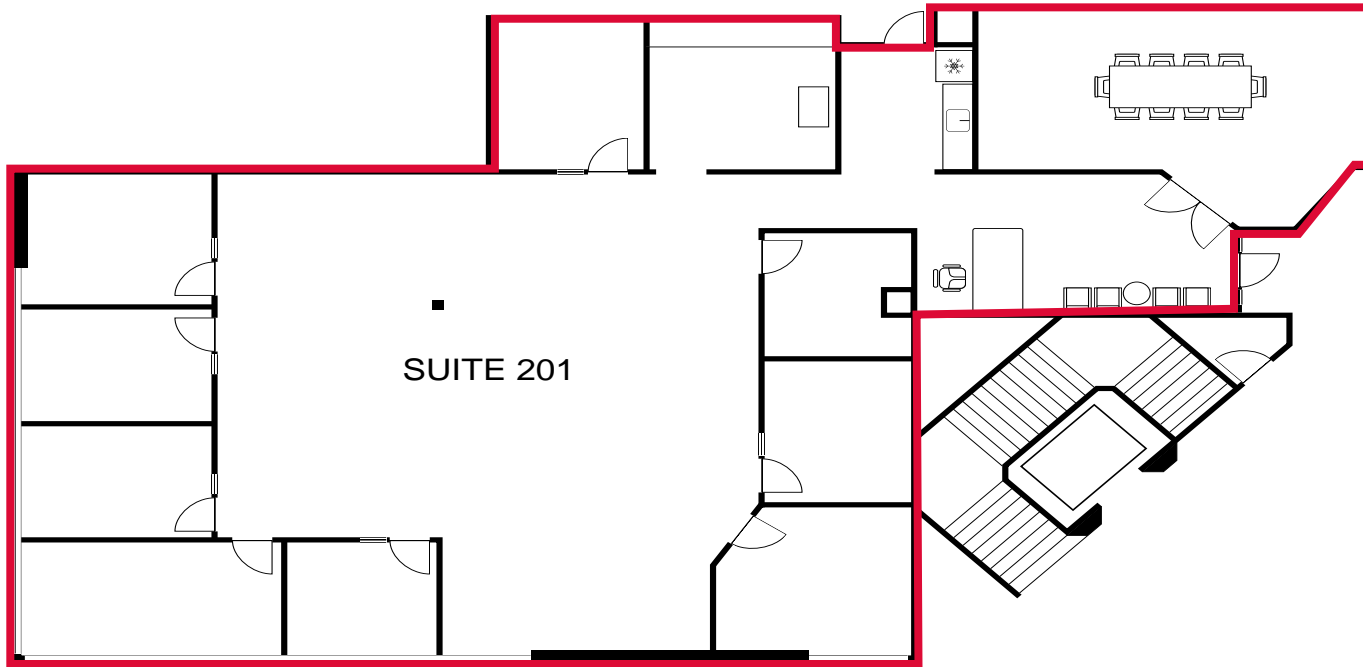


**BUILDING 3**  
 5370 Kietzke Lane  
**Suite 103**  
 6,030 SF Available



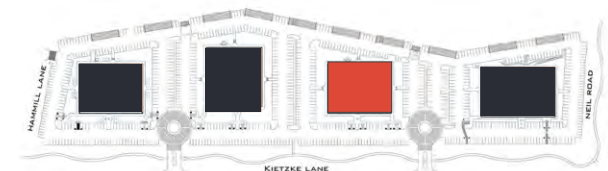
±232,000 SQUARE FEET

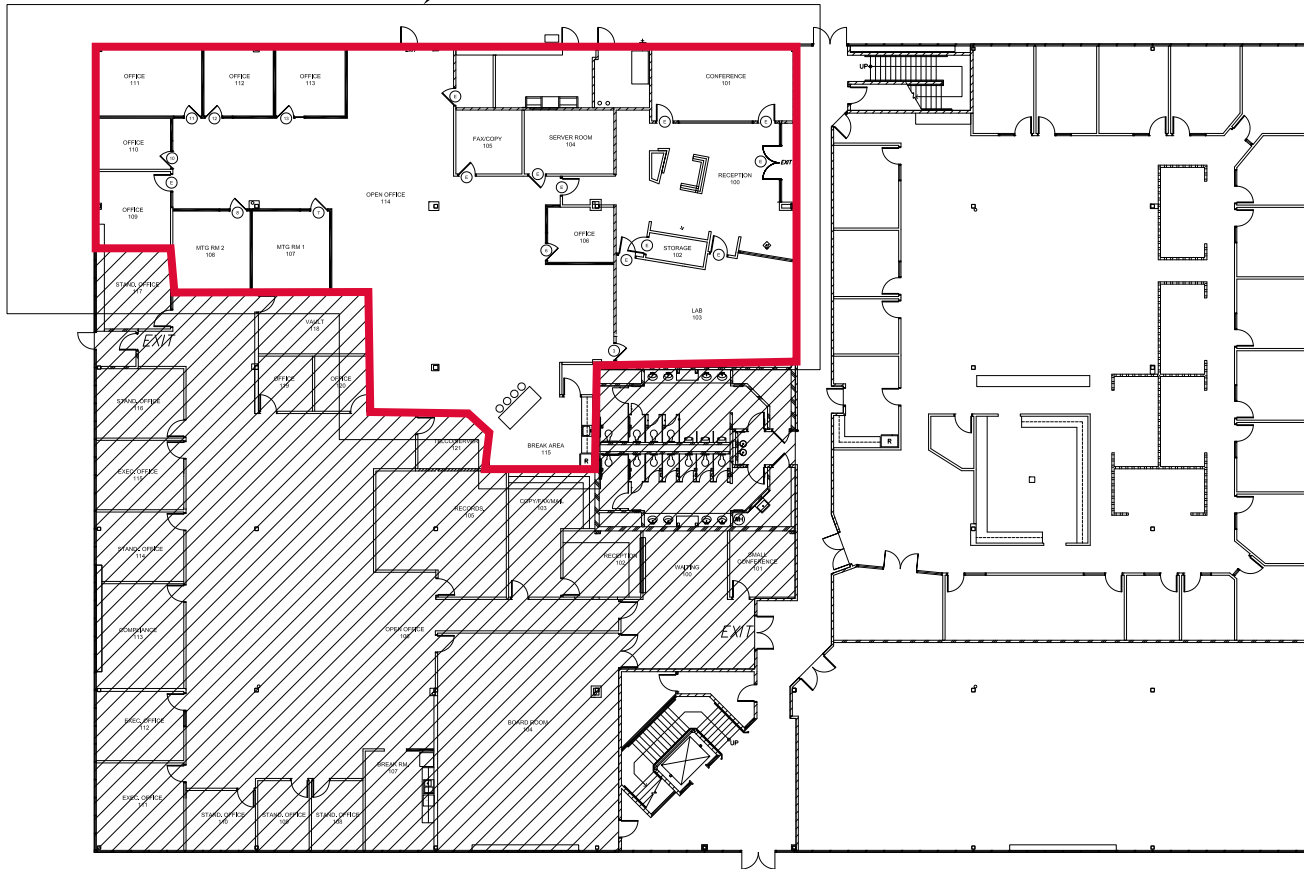
CLASS A FOUR BUILDING PROFESSIONAL OFFICE COMPLEX



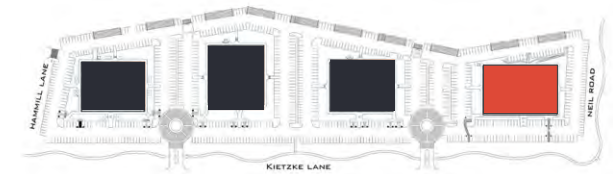
**BUILDING 3**  
5370 Kietzke Lane

**Suite 201**  
4,183 SF Available





**BUILDING 4**  
 5390 Kietzke Lane  
**Suite 103**  
 7,579 SF Available



# Nevdex Build-Outs





# Standalone Office Complex Appeal

maximum flexibility to accommodate tenants expansion or contraction needs

- +/- 232,000 SF Office Complex
- Highest concentration of Fortune 500 companies in one location in Northern Nevada
- On-site property management and local well capitalized ownership
- Floor to ceiling windows provide abundant natural light and spectacular mountain views
- High visibility signage available facing I-580 or Kietzke Lane
- Latest in technological services including Fiber optics, DSL and T-1 Lines



# Convenience that Matters

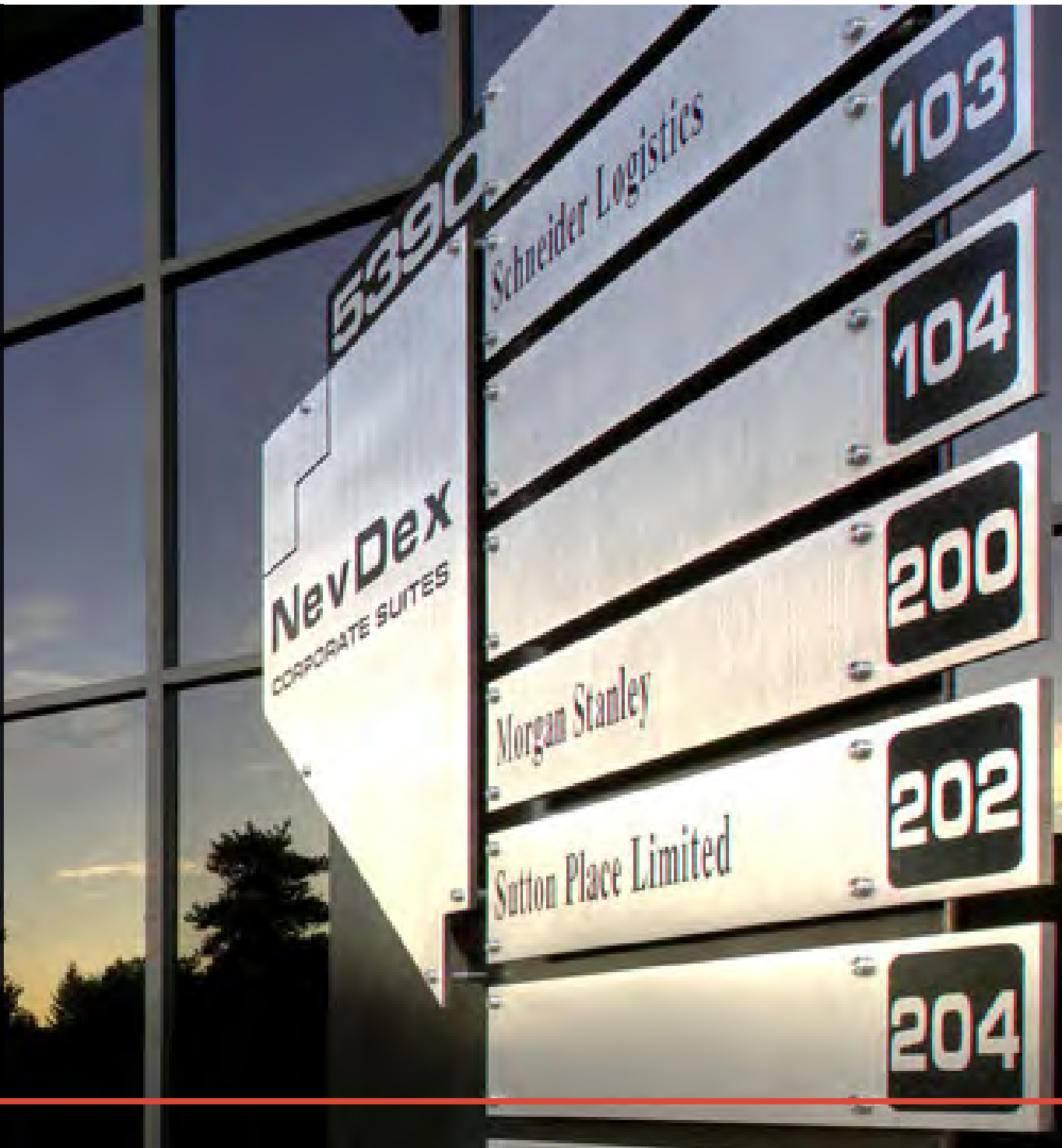
## Communications

- Complex is serviced with underground services
- Each building has its own separate entrance facilities from the local exchange carrier AT&T
- Separate and secure telecom room (MPOE) located inside the buildings, safe from environmental issues and shared with electrical services with adequate separation from high voltage services and telecom services.
- Each building is fed with 300 pair copper services
- Buildings have clear line of site to high quality wireless service providers.
- Infrastructure exists on the property between buildings with 4" conduits connecting from the MPOE of each building to the adjacent building, allowing for these buildings to be interconnected for tenants requiring space in multiple buildings.





**Floor to ceiling windows provide abundant natural light and spectacular mountain views**



# Location Advantage



Monument and building top  
Signage Opportunity



Five-minute drive to Reno-Tahoe  
International Airport



Across the Street from 140 Acre  
Master Planned Community with  
residential, retail and office



Adjacent to the I-580  
on/off ramps



Exceptional Access to Public  
Transportation



Adjacent to Numerous  
Restaurant Amenities



# Strong curb appeal

# Nevdex portfolio



**9990 Double R Blvd., Reno**  
**20,549 SF**  
Class A Commercial Office  
and Medical Building



**10345 Professional Circle, Reno**  
**64,360 SF**  
Class A Office



**Professional Circle, Reno**  
**10,000 SF**  
Premier Restaurant and Retail Development



**887 Trademark Drive, Reno**  
**53,437 SF**  
Class A Commercial Office Building



**10615 Professional Circle, Reno**  
**46,810 SF**  
Class A Office Building



**5310 Kietzke Lane, Reno**  
**55,387 SF**  
Class A Office



**5340 Kietzke Lane, Reno**  
**55,917 SF**  
Class A Office



**5370 Kietzke Lane, Reno**  
**55,559 SF**  
Class A Office



**5390 Kietzke Lane, Reno**  
**65,917 SF**  
Class A Office

±232,000 Square Feet | Class A Four Building Professional Office Complex

# 5310-5390

**KIETZKE LANE**  
RENO, NEVADA 89511

## Reno's Premier Corporate Address

For more information, Please contact

**David Woods, CCIM**

LIC. S.0072655

+1 775 321 4459

david.woods@cbre.com

**Matt Grimes, CCIM**

LIC. S.0072644

+1 775 356 6290

matt.grimes@cbre.com

**Leahna Chapman**

LIC. S.0183267

+1 775 823 6937

leahna.chapman@cbre.com



**CBRE**

© 2026 CBRE, Inc. All rights reserved. This information has been obtained from sources believed reliable, but has not been verified for accuracy or completeness. You should conduct a careful, independent investigation of the property and verify all information. Any reliance on this information is solely at your own risk. CBRE and the CBRE logo are service marks of CBRE, Inc. All other marks displayed on this document are the property of their respective owners, and the use of such logos does not imply any affiliation with or endorsement of CBRE. Photos herein are the property of their respective owners. Use of these images without the express written consent of the owner is prohibited. PMStudio\_April2026