

# Laurel Street Medical

501 Laurel Street, San Carlos, CA

Retail, Restaurant, Medical, Gym, School  
2,000 sf - 6,000 sf Building, 13,000 sf Land  
For Lease



\$335,300  
Average Household  
Income

# COMPASS

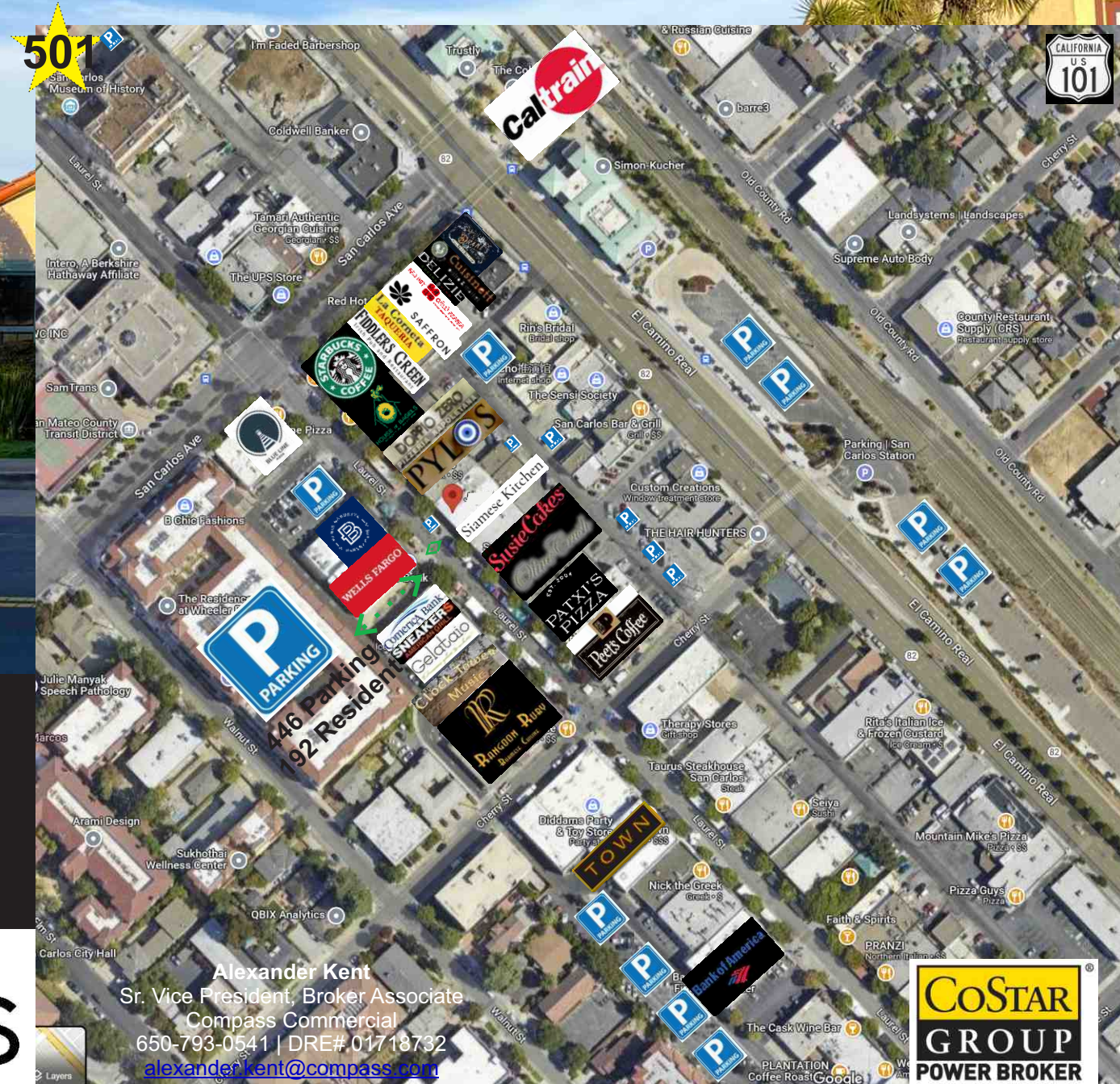
**Alexander Kent**  
Sr. Vice President, Broker Associate  
Compass Commercial  
650-793-0541 | DRE# 01718732  
[alexander.kent@compass.com](mailto:alexander.kent@compass.com)

**CoSTAR**  
GROUP  
POWER BROKER



# Laurel Street Medical

501 Laurel Street, San Carlos, CA



- Walking Distance to Caltrain and El Camino Bus Lines.
- Direct drive to Highway 101 on Holly St.
- Approx 9 Private Parking Spaces in Back.
- Easy Street Parking in Front.
- Hundreds of Parking Spaces within a few blocks.

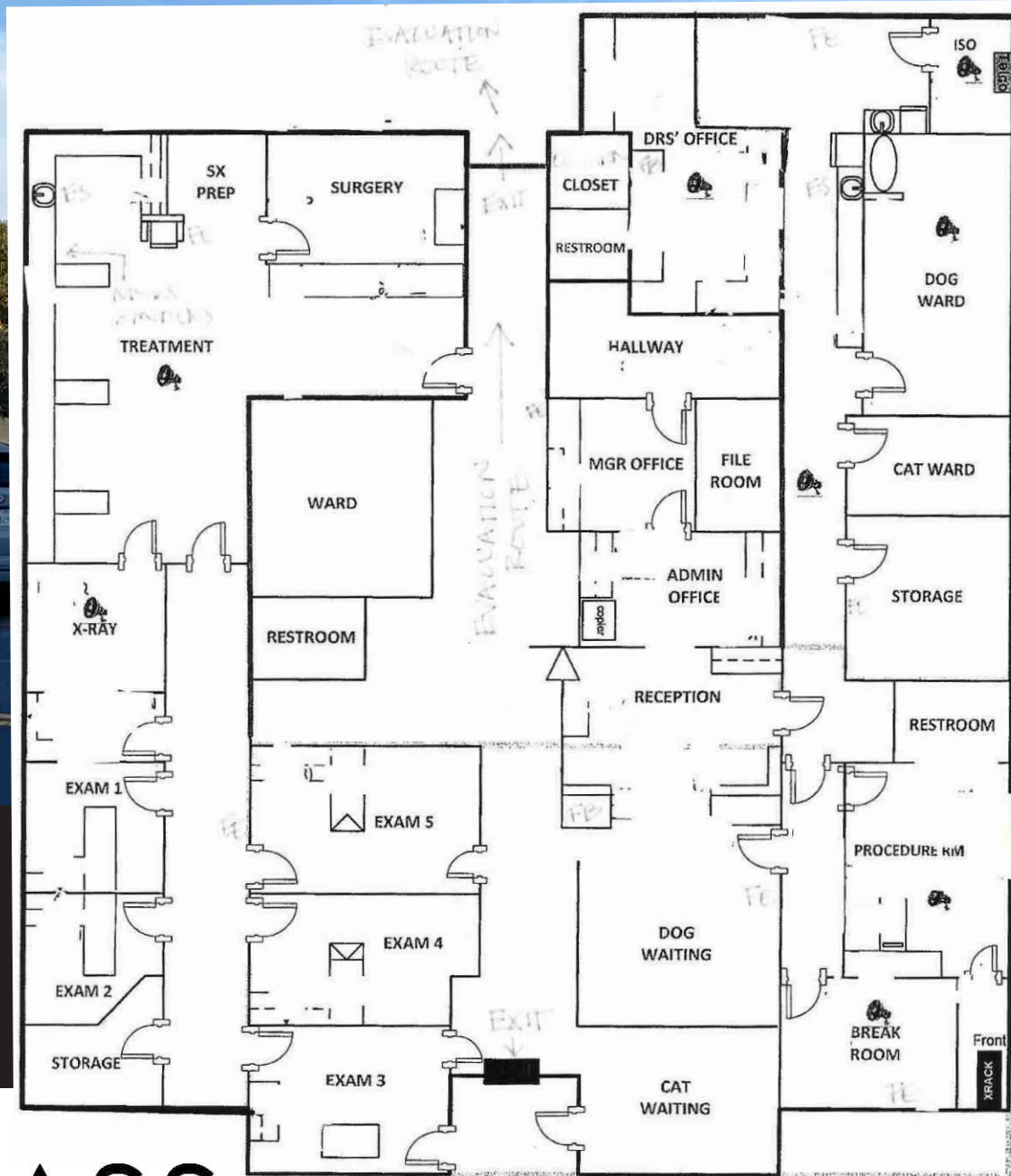
**COMPASS**

Alexander Kent  
Sr. Vice President, Broker Associate  
Compass Commercial  
650-793-0541 | DRE# 01718732  
[alexander.kent@compass.com](mailto:alexander.kent@compass.com)

**CoSTAR  
GROUP**  
POWER BROKER



# Laurel Street Medical

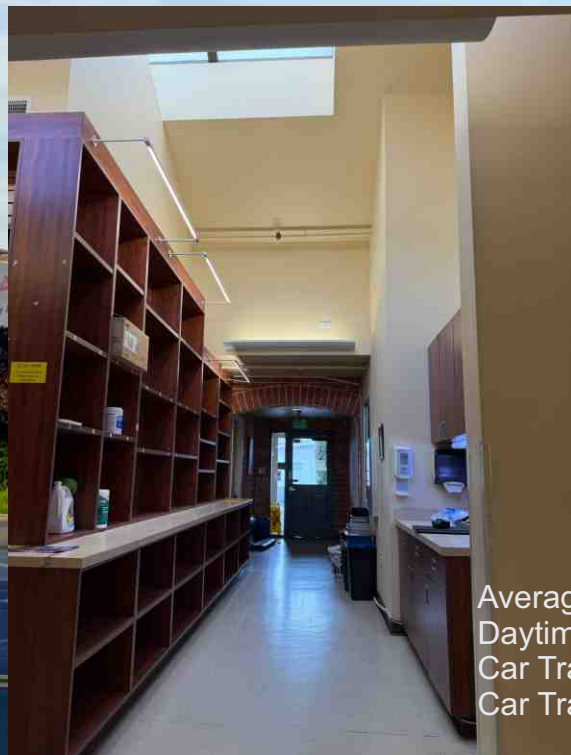


# COMPASS



# Laurel Street Medical

501 Laurel Street, San Carlos, CA



Average Household Income = \$335,300 (city wide)  
Daytime Employment Total = 19,424 employees (within 1 Mile)  
Car Traffic Count, El Camino Real = 30,390 Average Daily Trips  
Car Traffic Count, Holly Street = 7,882 Average Daily Trips

Major Employers = Joby Aero, L-3 Communications, Natera, PG&E, Checkpoint, Delta Star, ChemoCentryx, Vaxcyte, Iovance Biotherapeutics, Allakos, Atreca, Biomea Fusion, Significant Biotech Growth Projected.

Walking Distance to Caltrain and El Camino Bus Lines.  
Direct drive to Highway 101 on Holly St.  
Approx 9 Private Parking Spaces in Back.  
Easy Street Parking in Front.  
Hundreds of Parking Spaces within a few blocks.

# COMPASS

**Alexander Kent**  
Sr. Vice President, Broker Associate  
Compass Commercial  
650-793-0541 | DRE# 01718732  
[alexander.kent@compass.com](mailto:alexander.kent@compass.com)

**CoSTAR**  
GROUP  
POWER BROKER