



Taylor Park Shopping Center

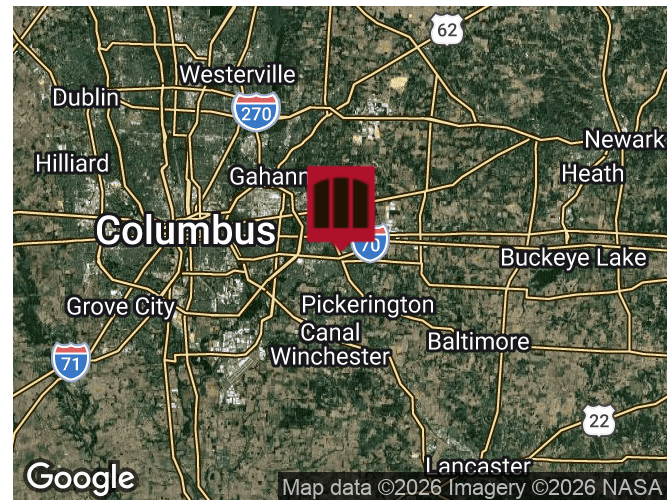
2363 Taylor Park Drive, Reynoldsburg, OH 43068

Property Description

Rare outparcel opportunity in the SR 256 corridor! This is a well located shopping center in Reynoldsburg immediately off SR 256 and I-70 in a very strong retail market. Shadow-anchored by Target and situated in a highly concentrated retail corridor which includes many other national tenants such as Walmart, Sam's Club, Best Buy, Old Navy, Marshalls and others.

Property Highlights

- Can likely accommodate up to 2,500 SF with a drive-thru
- Anchored by Ashley Furniture and Staples
- Brand new Chic-fil-A open directly in front of property
- Visibility from SR 256 intersection



Demographics	3 Miles	5 Miles	10 Miles
Total Households	35,330	81,053	190,901
Total Population	93,070	215,113	488,289
Average HH Income	\$94,029	\$96,125	\$98,832

Additional Photos

Taylor Park Shopping Center

2363 Taylor Park Drive, Reynoldsburg, OH 43068



Tim Maly
614.358.2089
tmaly@goblackgate.com

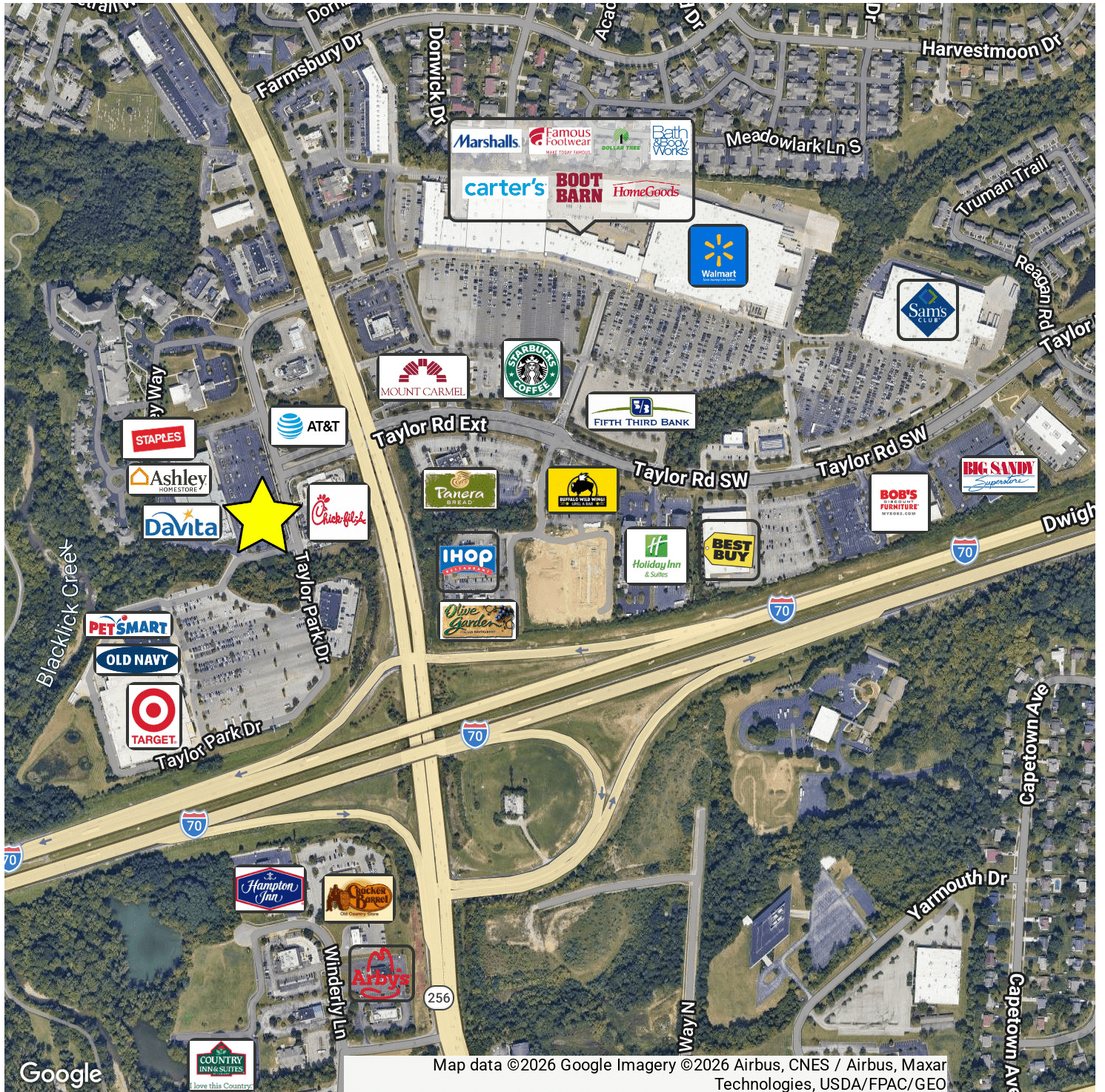
BlackGate

The information contained herein was obtained from sources believed reliable; however, Black Gate Partners LLC makes no guarantees, warranties, or representations as to the completeness or accuracy thereof. The presentation of this property is submitted subject to errors, omissions, change of price or conditions prior to sale or lease, or withdrawal without notice.

Retailer Map

Taylor Park Shopping Center

2363 Taylor Park Drive, Reynoldsburg, OH 43068



Tim Maly
614.358.2089
tmaly@goblackgate.com

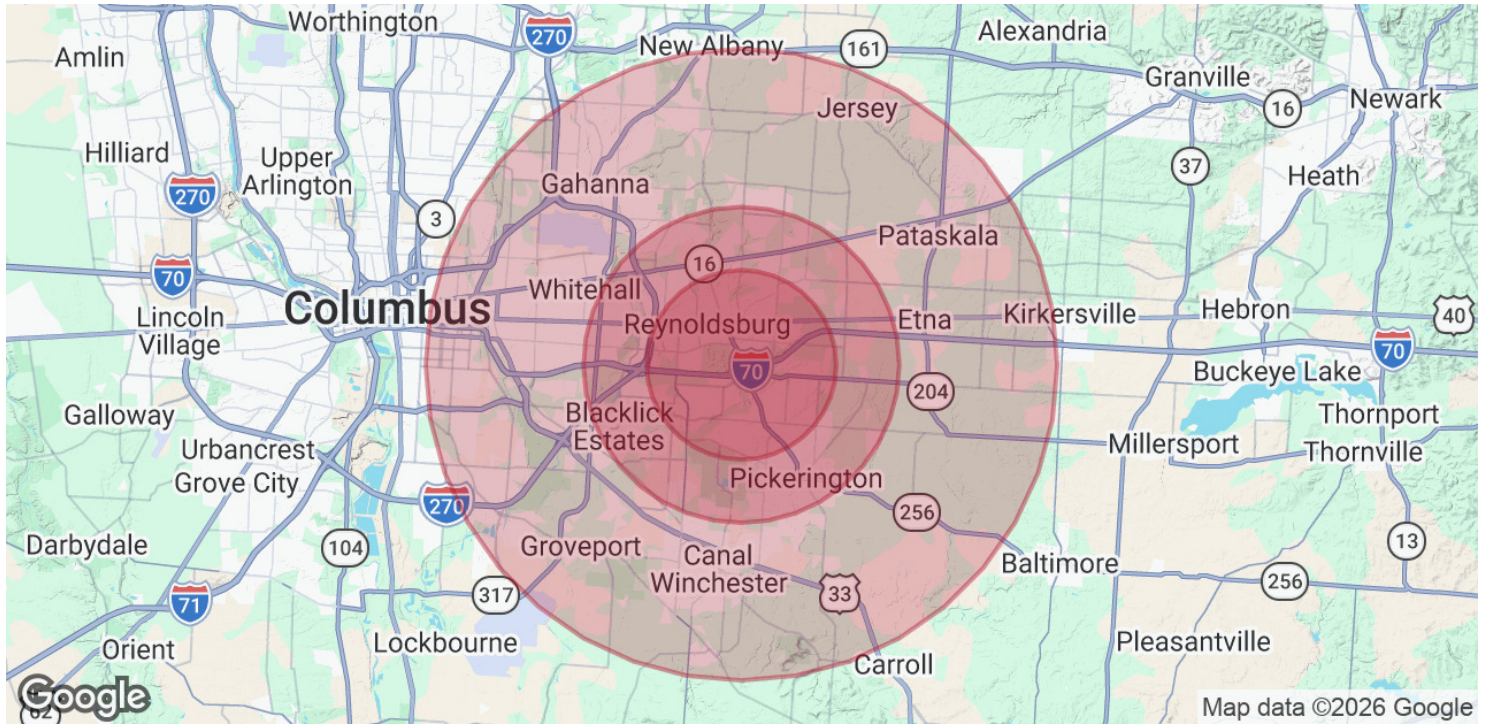


The information contained herein was obtained from sources believed reliable; however, Black Gate Partners LLC makes no guarantees, warranties, or representations as to the completeness or accuracy thereof. The presentation of this property is submitted subject to errors, omissions, change of price or conditions prior to sale or lease, or withdrawal without notice.

Demographics Map & Report

Taylor Park Shopping Center

2363 Taylor Park Drive, Reynoldsburg, OH 43068



POPULATION	3 MILES	5 MILES	10 MILES
Total Population	93,070	215,113	488,289
Average age	38	38	39
Average age (Male)	37	36	37
Average age (Female)	39	39	40
HOUSEHOLDS & INCOME	3 MILES	5 MILES	10 MILES
Total households	35,330	81,053	190,901
# of persons per HH	2.6	2.7	2.6
Average HH income	\$94,029	\$96,125	\$98,832
Average house value	\$255,681	\$269,058	\$296,088

* Demographic data derived from 2020 ACS - US Census