

UPPER EAST SIDE, NEW YORK

PARK AVENUE

BETWEEN 89TH AND 90TH STREET

GROUND FLOOR PROFESSIONAL OFFICE FOR SALE

1111



THE DANA COMMERCIAL TEAM
EST. 1911
DouglasElliman
REAL ESTATE

PROPERTY FEATURES

SIZE

Ground Floor, Unit 1200 square feet

ENTRANCE

Lobby Entrance

POSSESSION

Immediate

CEILINGS

9 feet

OCCUPANCY

Currently Foot and Ankle Specialist/Surgeon

RENT

\$995,000

MAINTENANCE AND TAXES

\$6500 month

FEATURES

- Located in a Prestigious Luxury Co-Op Building
- Exceptionally beautiful office
- Very modern touches
- Convenient to 86th Street transportation

Exclusively Represented by:

THE DANA COMMERCIAL TEAM

AT DOUGLAS ELLIMAN REAL ESTATE

GARY DANA

516-946-7207

gdana@elliman.com

RICK DANA

917-952-062482

rdana@elliman.com

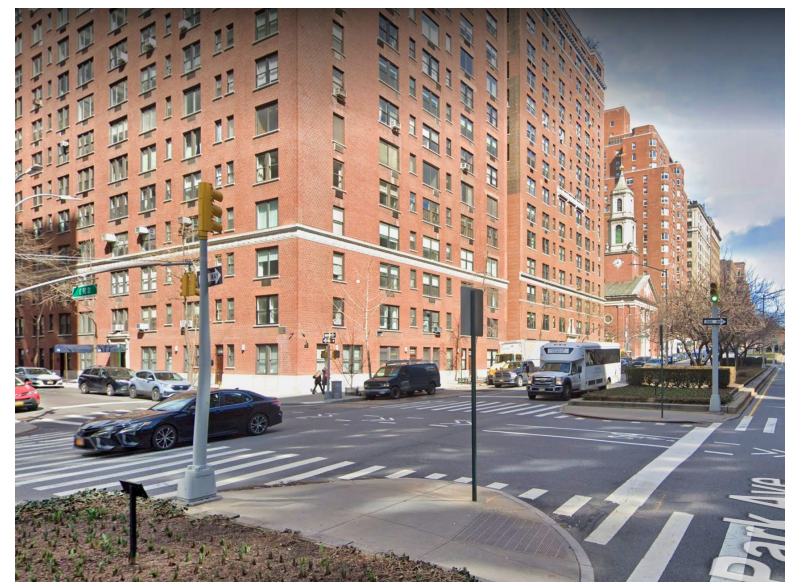
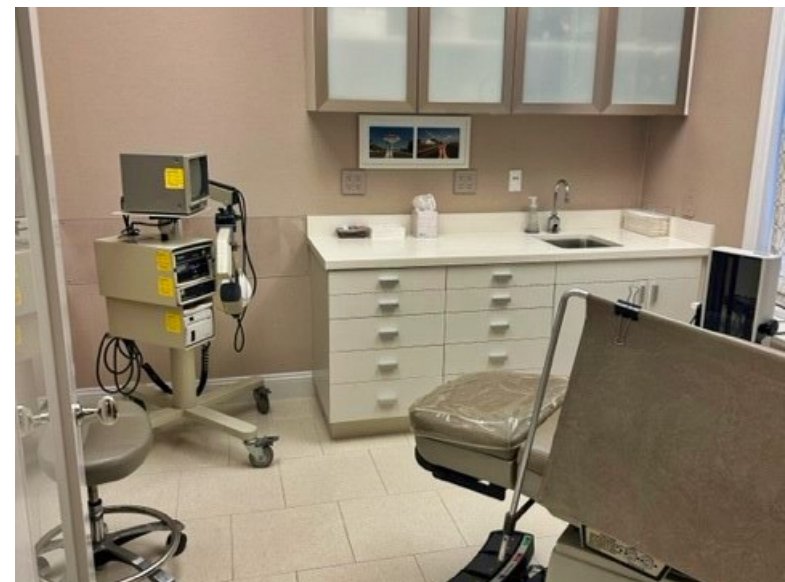
CHRIS DANA

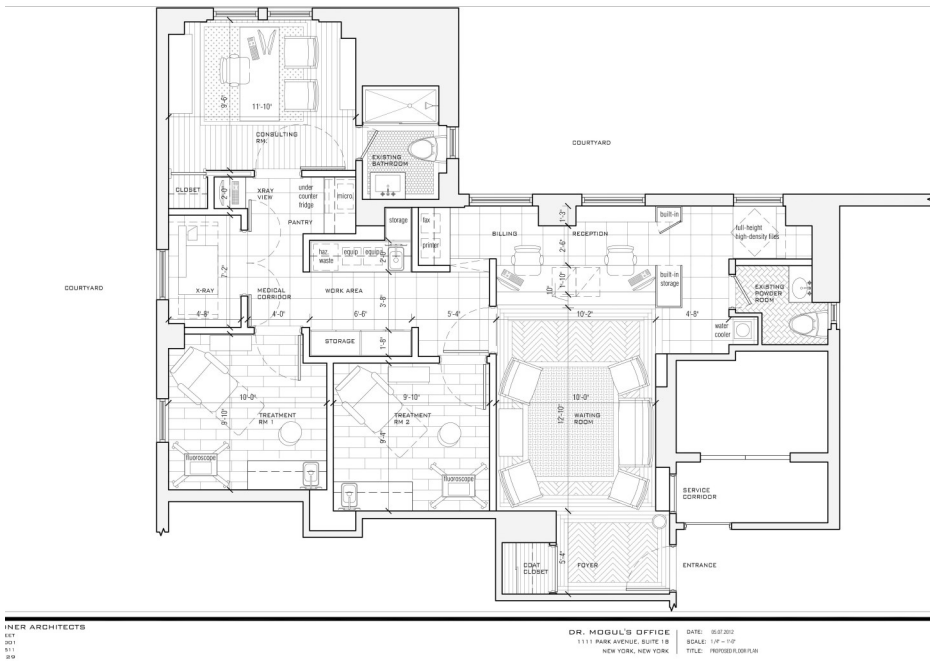
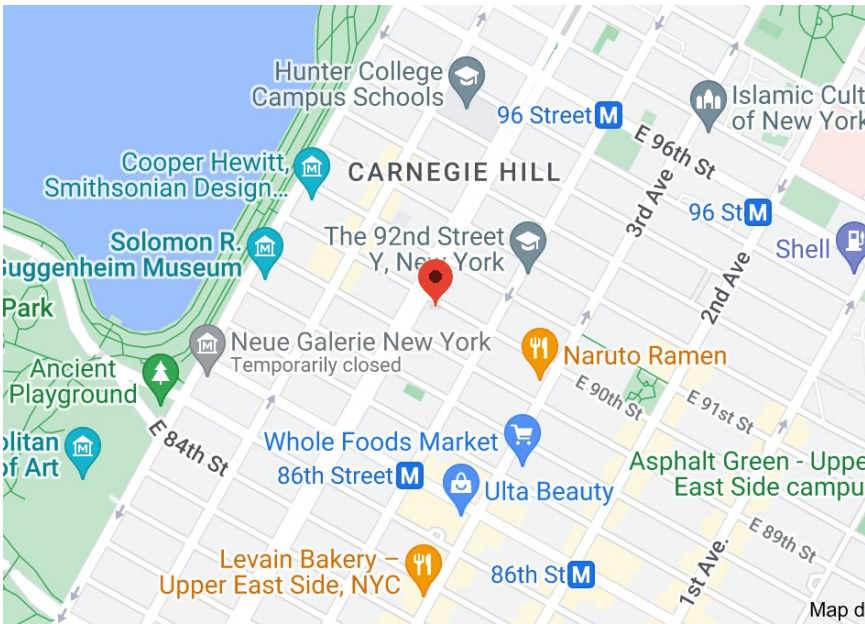
516-761-4317

cdana@elliman.com

575 MADISON AVENUE, NY, NY 10022. 212.891.7000 © 2021 DOUGLAS ELLIMAN REAL ESTATE. ALL MATERIAL PRESENTED HEREIN IS INTENDED FOR INFORMATION PURPOSES ONLY. WHILE, THIS INFORMATION IS BELIEVED TO BE CORRECT, IT IS REPRESENTED SUBJECT TO ERRORS, OMISSIONS, CHANGES OR WITHDRAWAL WITHOUT NOTICE. ALL PROPERTY INFORMATION, INCLUDING, BUT NOT LIMITED TO SQUARE FOOTAGE, ROOM COUNT, NUMBER OF BEDROOMS AND THE SCHOOL DISTRICT IN PROPERTY LISTINGS SHOULD BE VERIFIED BY YOUR OWN ATTORNEY, ARCHITECT OR ZONING EXPERT. IF YOUR PROPERTY IS CURRENTLY LISTED WITH ANOTHER REAL ESTATE BROKER, PLEASE DISREGARD THIS OFFER. IT IS NOT OUR INTENTION TO SOLICIT THE OFFERINGS OF OTHER REAL ESTATE BROKERS. WE COOPERATE WITH THEM FULLY. EQUAL HOUSING OPPORTUNITY. 🏠

/// PARK AVE.





INNER ARCHITECTS
 1111 PARK AVENUE, SUITE 15
 NEW YORK, NEW YORK

DR. MOGUL'S OFFICE
 1111 PARK AVENUE, SUITE 15
 NEW YORK, NEW YORK

DATE: 10/27/2012
 SCALE: 1/4" = 1'-0"
 TITLE: PHOTOGRAPHY

Exclusively Represented by:

THE DANA COMMERCIAL TEAM

AT DOUGLAS ELLIMAN REAL ESTATE

GARY DANA

212.692.6183

gdana@elliman.com

RICK DANA


212.692.6182

rdana@elliman.com

CHRIS DANA

212.455.4721

cdana@elliman.com

575 MADISON AVENUE, NY, NY 10022. 212.891.7000 © 2021 DOUGLAS ELLIMAN REAL ESTATE. ALL MATERIAL PRESENTED HEREIN IS INTENDED FOR INFORMATION PURPOSES ONLY. WHILE, THIS INFORMATION IS BELIEVED TO BE CORRECT, IT IS REPRESENTED SUBJECT TO ERRORS, OMISSIONS, CHANGES OR WITHDRAWAL WITHOUT NOTICE. ALL PROPERTY INFORMATION, INCLUDING, BUT NOT LIMITED TO SQUARE FOOTAGE, ROOM COUNT, NUMBER OF BEDROOMS AND THE SCHOOL DISTRICT IN PROPERTY LISTINGS SHOULD BE VERIFIED BY YOUR OWN ATTORNEY, ARCHITECT OR ZONING EXPERT. IF YOUR PROPERTY IS CURRENTLY LISTED WITH ANOTHER REAL ESTATE BROKER, PLEASE DISREGARD THIS OFFER. IT IS NOT OUR INTENTION TO SOLICIT THE OFFERINGS OF OTHER REAL ESTATE BROKERS. WE COOPERATE WITH THEM FULLY. EQUAL HOUSING OPPORTUNITY. 



THE DANA COMMERCIAL TEAM

Douglas Elliman
 REAL ESTATE

EST. 1911