

FOR LEASE

9120 PREMIER ROW | DALLAS, TEXAS



THE DETAILS

ADDRESS

9120 Premier Row
Dallas, TX 75247

Brookhollow Industrial District

AVAILABLE

12,450 SF Office/Warehouse
situated on 34,805 SF of Land
Office: Approximately 1,000 SF

AMENITIES

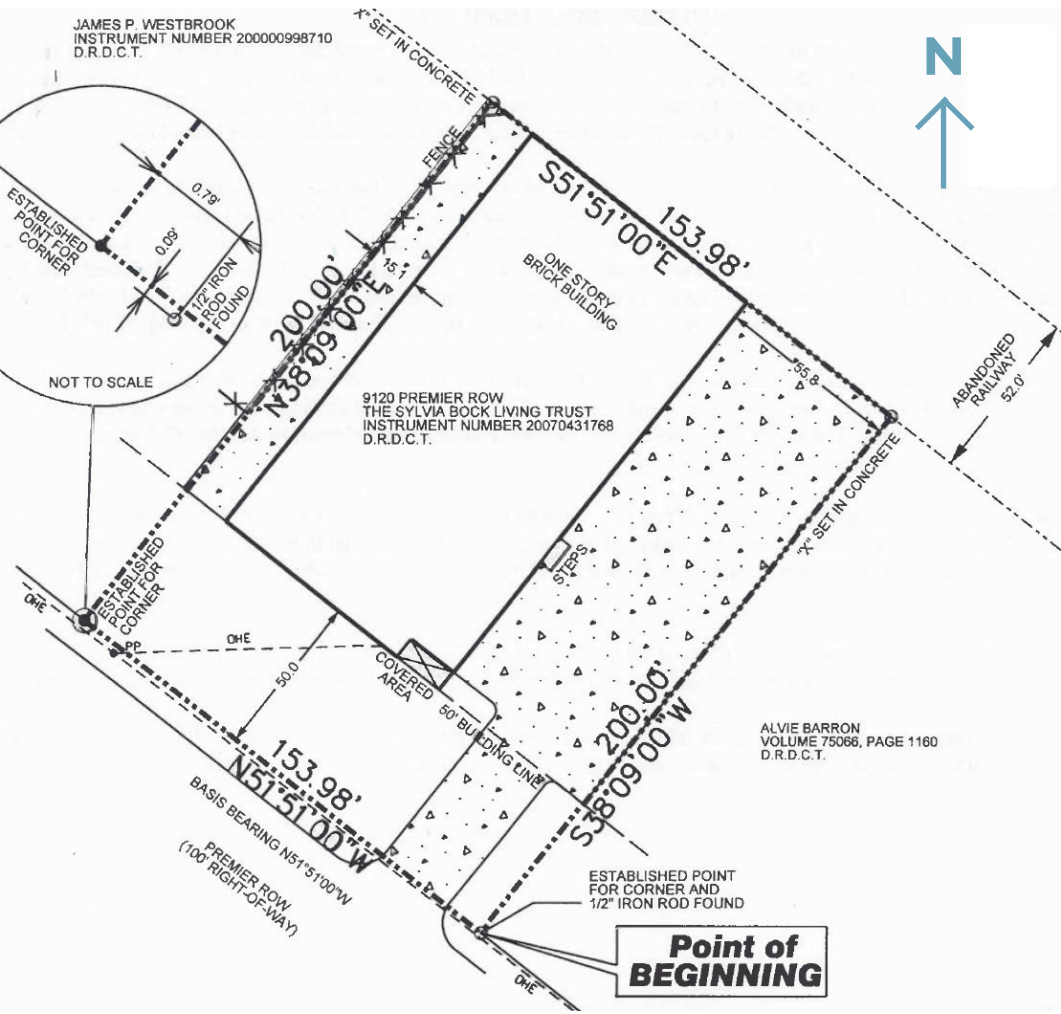
Two (2) Dock High Loading
Doors

Building Dimensions are
approximately 83' x 150'


14' Clear Height

3-Phase Electrical







AVAILABLE SPACE



34,805 SF OF LAND



12,450 SF OF OFFICE / WAREHOUSE SPACE



1,000 SF OF OFFICE SPACE



9120 PREMIER ROW


DFW
Airport


Dallas
Love Field
Airport

IRVING

INTERSTATE
35E

75

DALLAS

INTERSTATE
30

14 minutes from **DFW Airport**
14 minutes from **Design District**
15 minutes from **Dallas Love Field**
21 minutes from **Downtown Dallas**
24 minutes from **Uptown**

ALT+CO
ALTSCHULER AND COMPANY

BRANDON TERRELL
214.695.7117
bt@altshulercompany.com

SAM WELLES
860.418.9244
sw@altshulercompany.com