

9625 SURVEYOR COURT MANASSAS, VA 22030

FOR LEASE

FEATURES:

- Attractive lobby with two elevators
- Ample parking
- Easy access to Route 234 and I-66
- Immediately adjacent to Prince William Hospital (part of the NOVANT Health System)
- Shopping and restaurants: across the street
- Prince William County Courthouse: 1 mile
- Manassas Mall: 1 mile
- 1/4 mile West of the Sudley Commercial District
- Route 66: 5 minutes

Rate: \$21.75 - \$23.00 Full Service



For more information, please contact:

Cole Spalding
cole.spalding@nmrk.com
703.918.0230

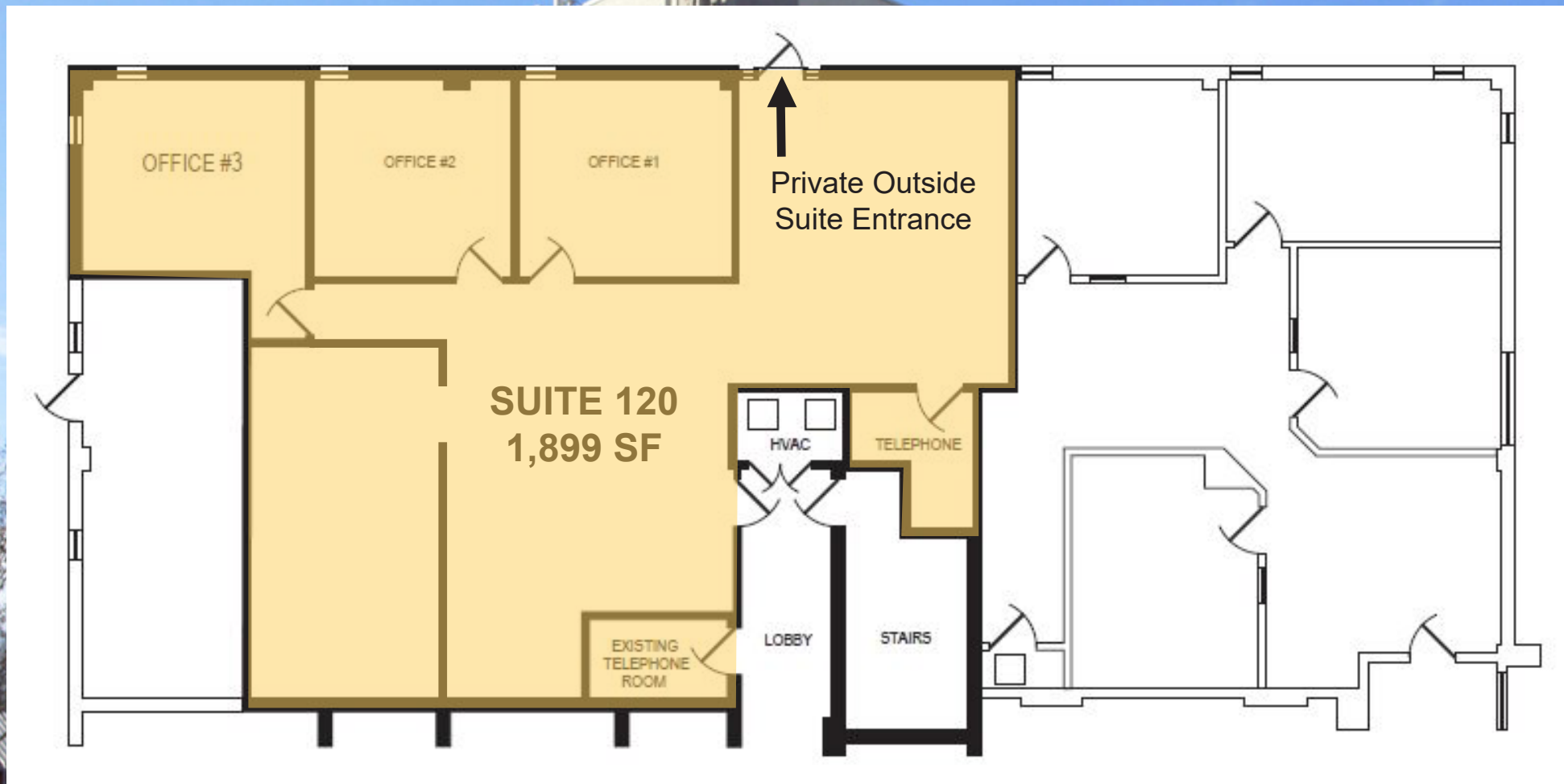
Larry FitzGerald
larry.fitzgerald@nmrk.com
703.918.0221

Nicholas Kuhn
nicholas.kuhn@nmrk.com
571.215.9213

NEWMARK

9625 SURVEYOR COURT
MANASSAS, VA 22030

FOR LEASE



For more information, please contact:

Cole Spalding
cole.spalding@nmrk.com
703.918.0230

Larry FitzGerald
larry.fitzgerald@nmrk.com
703.918.0221

Nicholas Kuhn
nicholas.kuhn@nmrk.com
571.215.9213

NEWMARK

1420 Spring Hill Road, Suite 600, McLean, VA 22102

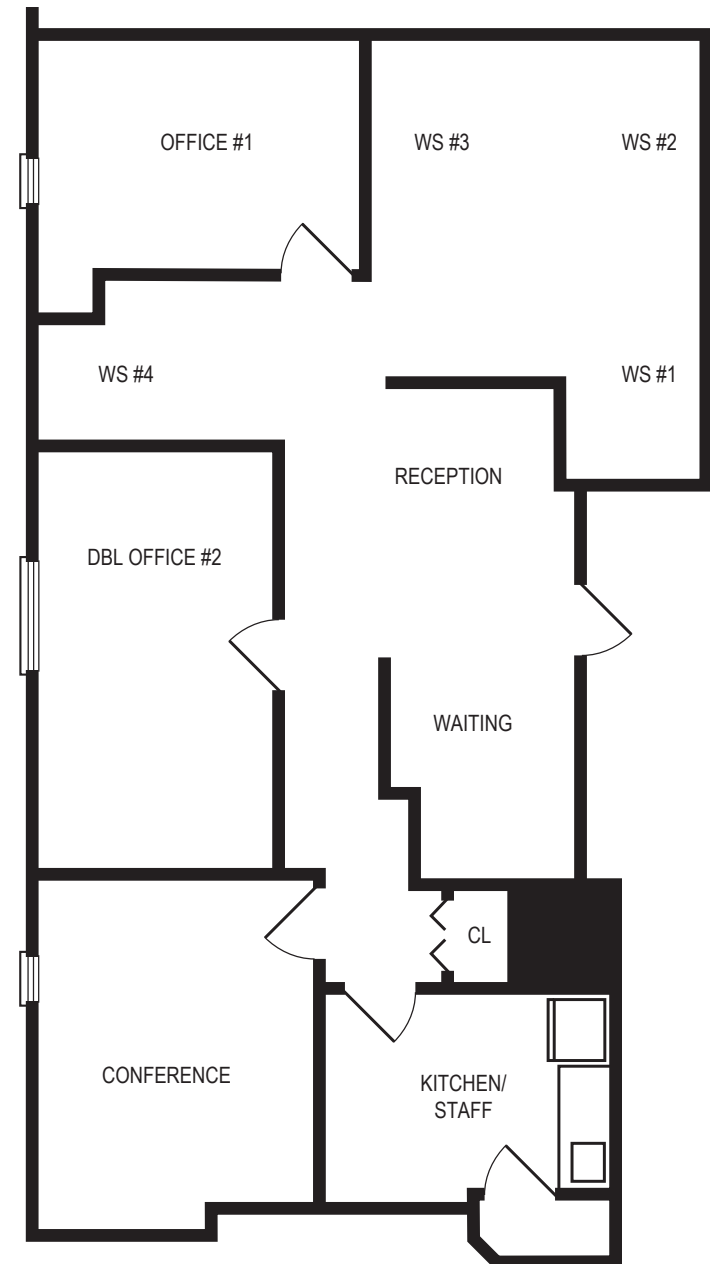
9625 SURVEYOR COURT
MANASSAS, VA 22030

FOR LEASE

SUITE 210

Area: 1,754 SF

Possession: Immediately



For more information, please contact:

Cole Spalding
cole.spalding@nmrk.com
703.918.0230

Larry FitzGerald
larry.fitzgerald@nmrk.com
703.918.0221

Nicholas Kuhn
nicholas.kuhn@nmrk.com
571.215.9213

NEWMARK