

## I-35 at County Line

Ardmore, Oklahoma 73401

### PROPERTY HIGHLIGHTS

- 13.66 Acres MOL
- 660 ft. of Frontage on I-35
- High Visibility, Just South of Ardmore
- West Side of I-35, Just North of County Line Exit Off Ramp
- Perfect Location for Travel or Hospitality Services
- Includes Tenant \$7,900/Year (5 Years)

TOTAL ACRES	13.66 Acres
ZONED	Agricultural

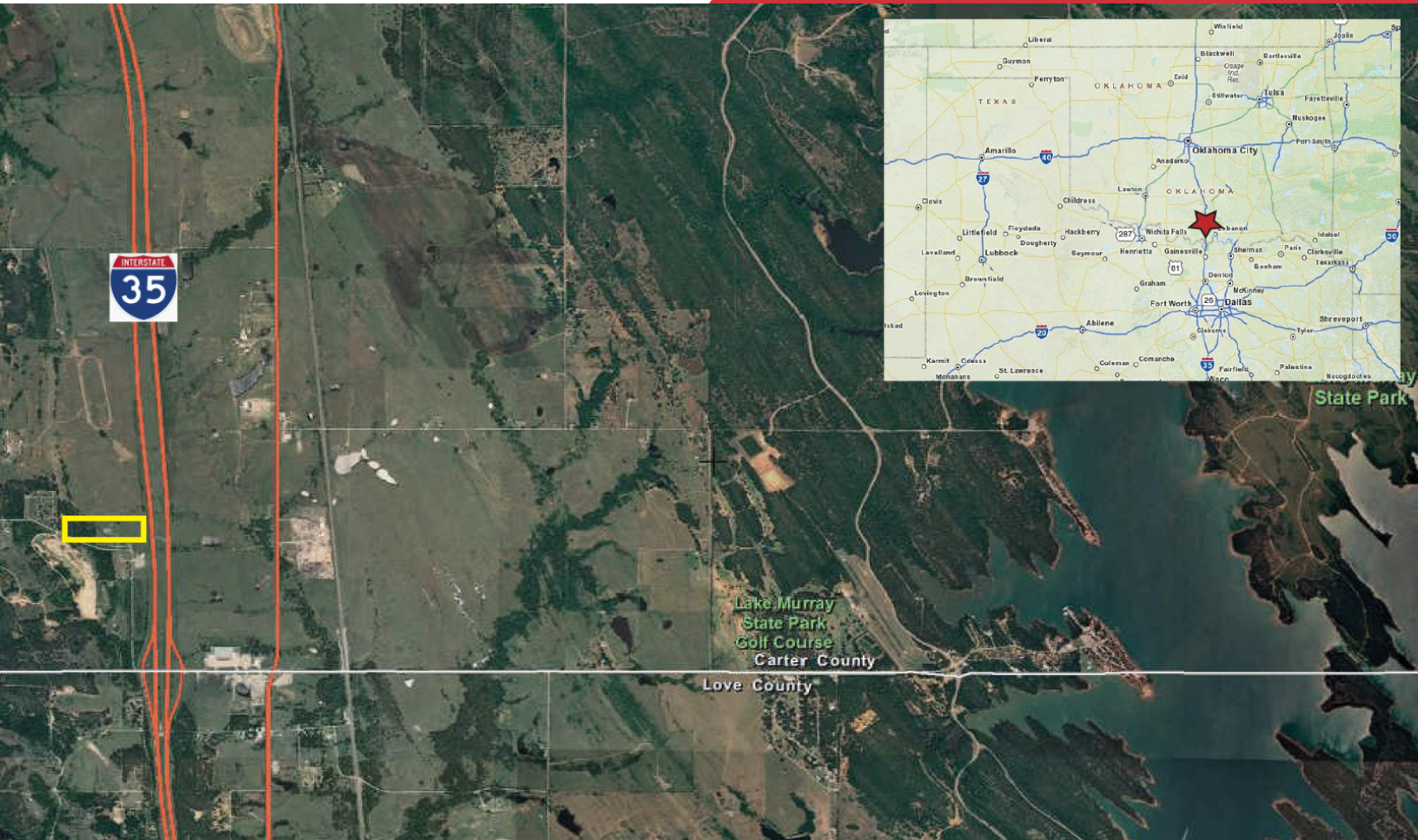
NO WARRANTY OR REPRESENTATION, EXPRESS OR IMPLIED, IS MADE AS TO THE ACCURACY OF THE INFORMATION CONTAINED HEREIN, AND THE SAME IS SUBMITTED SUBJECT TO ERRORS, OMISSIONS, CHANGE OF PRICE, RENTAL OR OTHER CONDITIONS, PRIOR SALE, LEASE OR FINANCING, OR WITHDRAWAL WITHOUT NOTICE, AND OF ANY SPECIAL LISTING CONDITIONS IMPOSED BY OUR PRINCIPALS NO WARRANTIES OR REPRESENTATIONS ARE MADE AS TO THE CONDITION OF THE PROPERTY OR ANY HAZARDS CONTAINED THEREIN ARE ANY TO BE IMPLIED.

**Irmon Gray**  
+1 405 474 7286  
irmon@naisullivangroup.com

4045 N.W. 64<sup>th</sup> Street, Suite 340  
Oklahoma City, OK 73116  
[www.naisullivangroup.com](http://www.naisullivangroup.com)

**Darryl Meason**  
+1 405 205 9440  
darryl@naisullivangroup.com

+1 405 840 0600 OFFICE  
+1 405 840 0610 FAX



### LOCATION HIGHLIGHTS

- Dimensions: 900' x 660'
- Close to East Bound Lake Murray
- Recreational Area Access
- Half Way Between Oklahoma City & Dallas on I-35

Population	1 Mile: 735	3 Miles: 14,495	5 Miles: 25,912
Average Household Income	1 Mile: \$62,549	3 Miles: \$52,808	5 Miles: \$50,240
Total Households	1 Mile: 287	3 Miles: 5,997	5 Miles: 10,617

NO WARRANTY OR REPRESENTATION, EXPRESS OR IMPLIED, IS MADE AS TO THE ACCURACY OF THE INFORMATION CONTAINED HEREIN, AND THE SAME IS SUBMITTED SUBJECT TO ERRORS, OMISSIONS, CHANGE OF PRICE, RENTAL OR OTHER CONDITIONS, PRIOR SALE, LEASE OR FINANCING, OR WITHDRAWAL WITHOUT NOTICE, AND OF ANY SPECIAL LISTING CONDITIONS IMPOSED BY OUR PRINCIPALS NO WARRANTIES OR REPRESENTATIONS ARE MADE AS TO THE CONDITION OF THE PROPERTY OR ANY HAZARDS CONTAINED THEREIN ARE ANY TO BE IMPLIED.

**Irmon Gray**  
+1 405 474 7286  
irmon@naisullivangroup.com

4045 N.W. 64<sup>th</sup> Street, Suite 340  
Oklahoma City, OK 73116

[www.naisullivangroup.com](http://www.naisullivangroup.com)

**Darryl Meason**  
+1 405 205 9440  
darryl@naisullivangroup.com

+1 405 840 0600 OFFICE  
+1 405 840 0610 FAX