

SUBLEASE
AVAILABLE

100 GARDEN CITY
PLAZA,
GARDEN CITY

Entire 3rd floor:
25,465 RSF

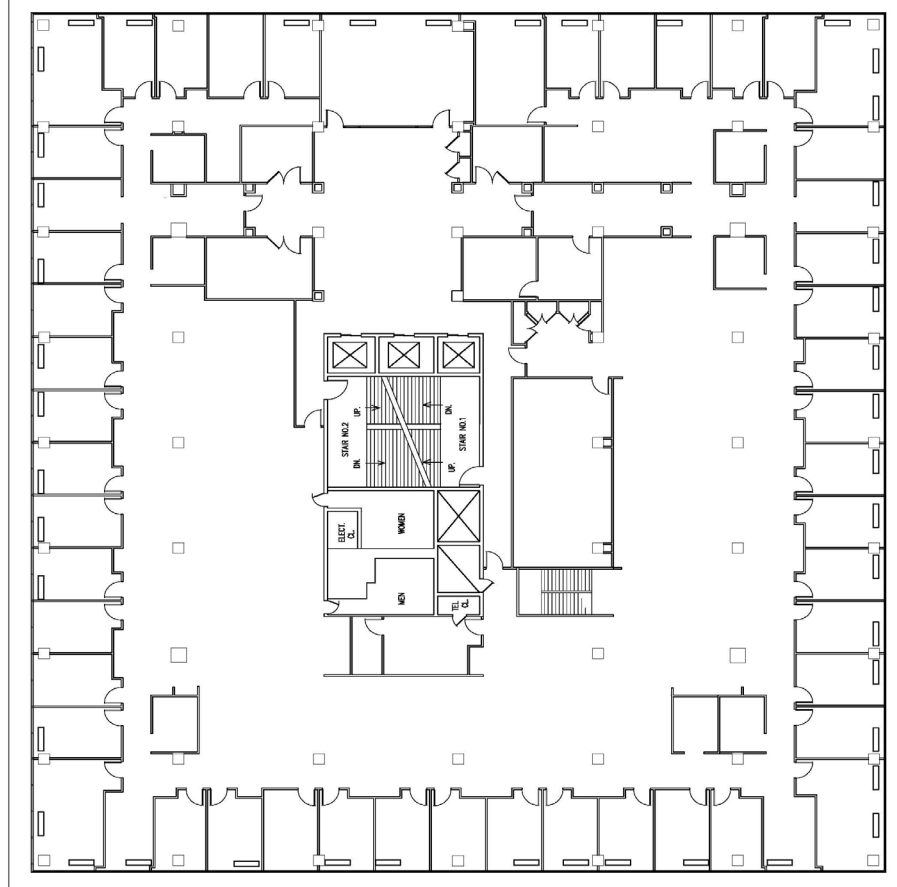
Sublease to
January 31, 2028

Longer Term
Available

Upgraded
Throughout

Fully Furnished
Plug and Play Space

EXISTING CONDITIONS FLOOR PLAN



TREELINE

For Leasing Information Contact:
Kraig Silver, Executive Vice President

Phone: 516-837-8070 Email:
kraig.silver@treelinecompanies.com

Brokers Protected. All information contained herein regardless of source is deemed reliable, but no warranty or representation is made to the accuracy thereof and should be verified by personal inspection by and/or with the appropriate professional(s). All information contained herein is subject to correction of errors, omissions or withdrawal from market without notice.

ADDITIONAL PICTURES

- Located directly across from Roosevelt Field Mall at Garden City Plaza (a four building multi-tenanted office complex)
- Located in close proximity to the Meadowbrook State Parkway, the Northern State Parkway, and the Long Island Expressway
- Minutes from the Mineola Train Station

