

190
Washington
Blvd.



Free Standing Commercial Space
for Lease in Fremont's Premium
Mission San Jose District

ZONING: TC-P (HOD) (H-1)
Town Center Pedestrian – mixed retail, service and office use.

+/-2,115 SF | \$6,345 monthly [NNN]

Contact: John Wong

(510) 894-3828

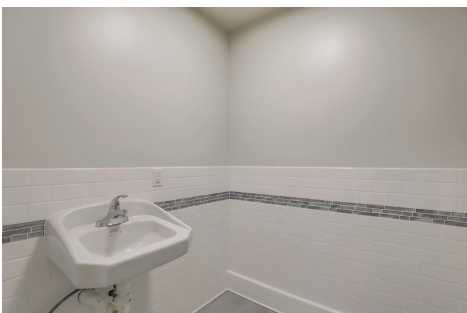
190washington.com



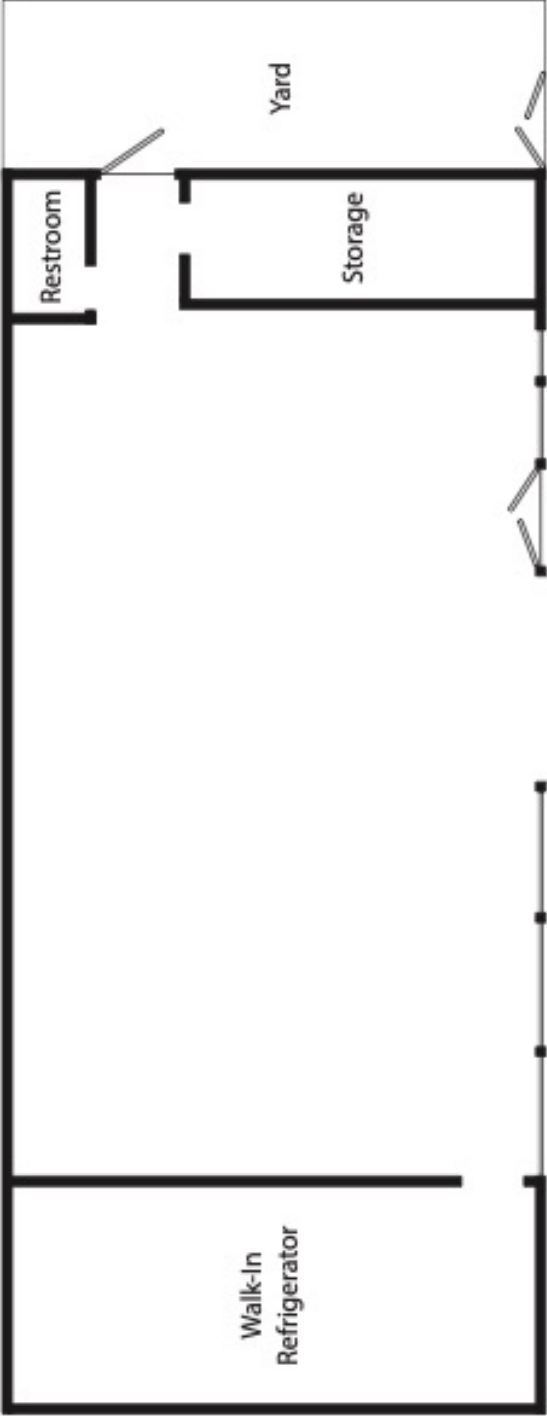
CORNER LOCATION WITH LARGE PRIVATE PARKING LOT Located at the corner of Washington Boulevard and Ellsworth Street, just one block from Ohlone College and Mission Boulevard.



REFRIGERATED SPACE (OPTIONAL) Former convenience market, the walk-in refrigerator is fully functioning or can be removed upon request.



RESTROOM, STORAGE AND ADDITIONAL 300 SQ. FT. OUTDOOR ENCLOSURE



FREMONT DEMOGRAPHICS

POPULATION:

230,504 (2020 Census)

4th most populous city in the Bay Area

Mission San Jose ranked 237 on Forbes magazine's list of most affluent communities in the US.

HOME TO:

Tesla

Seagate

Facebook

Amazon

Lam Research

Washington and Kaiser Hospitals

Synnex

Western Digital

TRANSPORTATION:

Interstates 880 and 680

State Routes 262, 84 and 238

Dumbarton Bridge

Served by: BART, ACE, Amtrak and AC Transit

Near Oakland and San Jose International Airports and Port of Oakland