



Pyramids Village

2101 Pyramids Village Blvd, Greensboro, NC 27405



For Lease

Doug Fogartie, Broker
dfogartie@bipinc.com
P: 336-544-8000
M: 919-605-6093



Bill Strickland, CCIM, MBA
bstrickland@bipinc.com
336-369-5974



Property Features

- Year Built: 2007
- Located conveniently near US-29 and Cone Blvd
- Shadow anchored by a Walmart Superstore
- Surrounded by various retail including Lowes Home Improvement, McDonalds and Zaxby's
- Ample parking
- Zoning: C-H (Commercial Heavy)

Available Units

2103 - 102: 3,600 +/- SF

2101 - 102-3: 8,200 +/- SF

2101 - 107: 3,200 +/- SF

2101 - 109: 1,680 +/- SF

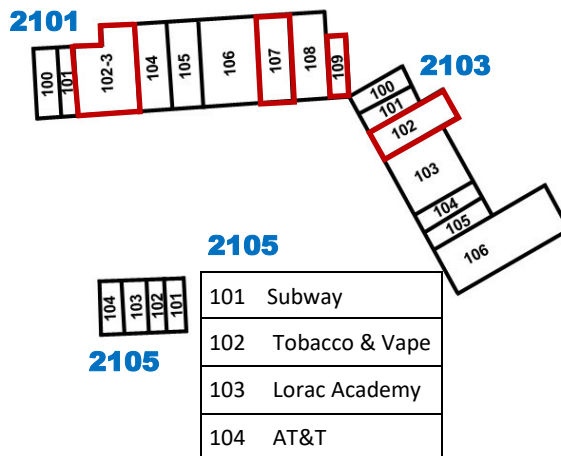
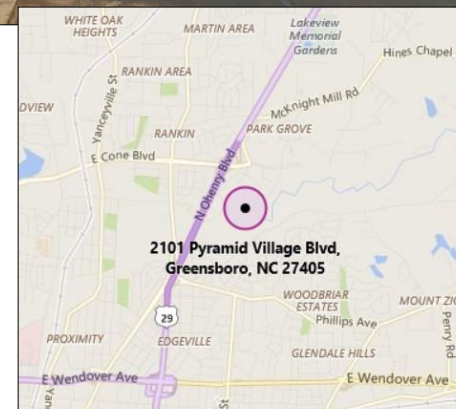
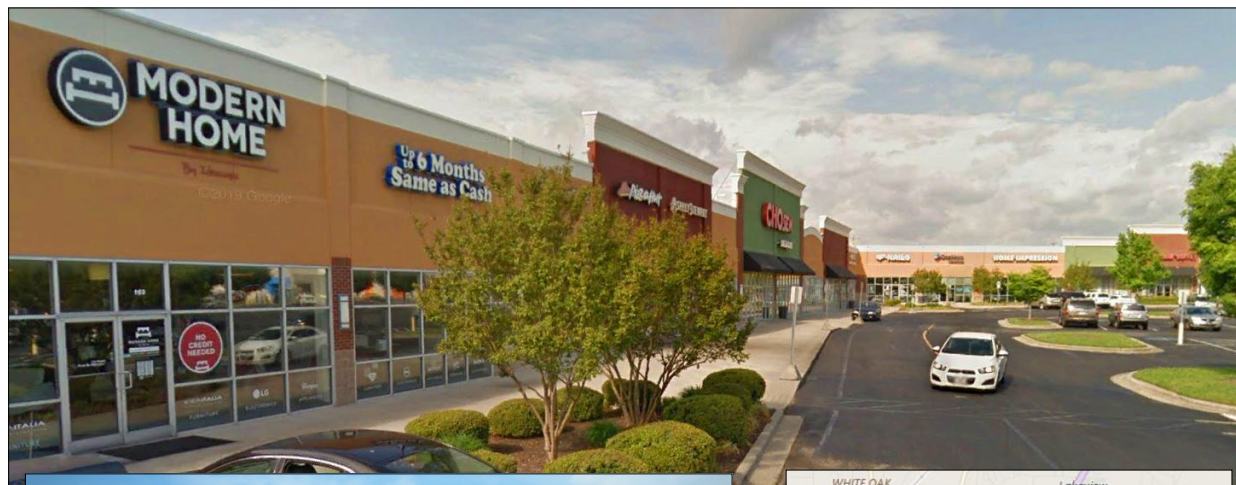
Lease Rate: \$10 - \$16 PSF NNN

TICAM: \$3.60 PSF (Estimate)

	1 Mile	3 Miles
Population	9,961	69,849
Avg HH Income	\$31,158	\$38,969
Traffic: 19,900 VPD intersection with Cone Blvd. 22,000 VPD Cone & US-29		



440 West Market Street, Greensboro, NC 27401
336-379-8771 www.bipinc.com



2101

101	Blendz
102-3	AVAILABLE
104	Pizza Hut
105	Hibbitt Sports
106	Chosen Child Care
107	AVAILABLE
108	Red Crab Restaurant
109	AVAILABLE

2103

100	#1 Nail Salon
101	One Main Financial
102	AVAILABLE
103	Super China Buffet
104	A.W.O.L Fitness
105	T-Mobile
106	Rainbow

The statements and figures herein while not guaranteed are secured from sources believed to be authoritative. This offering is subject to change of price, prior lease or sale and or withdrawal without notice. Prospects should verify all information.