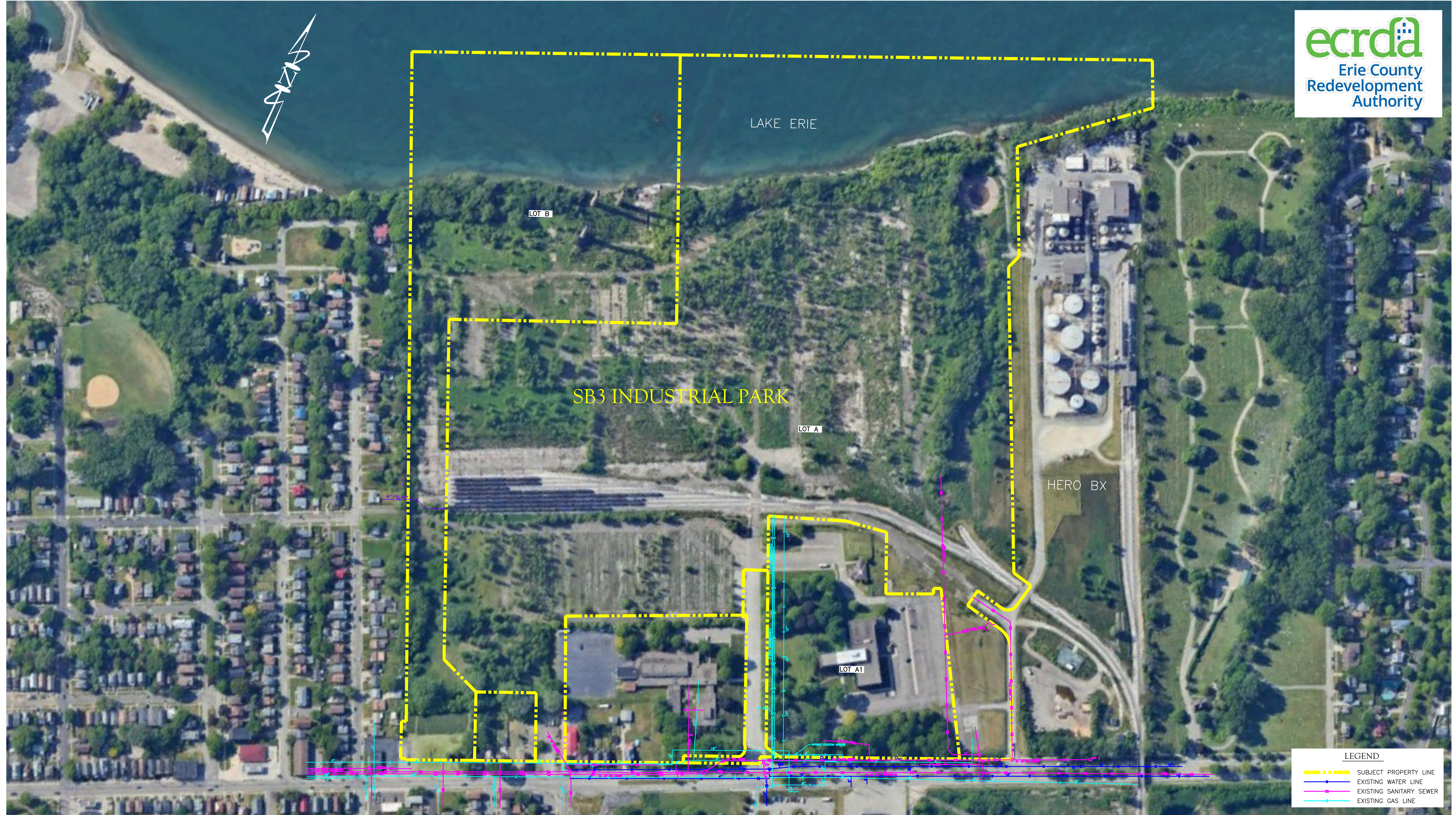


SB3 INDUSTRIAL PARK



LEGEND

	SUBJECT PROPERTY LINE
	EXISTING WATER LINE
	EXISTING SANITARY SEWER
	EXISTING GAS LINE

PREPARED BY:
PCE Porter Consulting Engineers, P.C.
Developing Engineered Solutions To Meet Your Project Needs
552 State Street
Meadville, Pennsylvania 16335
Phone: (814) 337-4447
Fax: (814) 333-3760
www.pceengineers.com
E-Mail: pce@pceengineers.com
Contact Person: L. Ashley Porter, P.E.
lporter@pceengineers.com
Date prepared: July 17, 2024

SB3 INDUSTRIAL PARK
0 150 300 feet
SCALE: 1" = 150'