

2781 ROBERTS AVENUE

PHILADELPHIA, PA 19129

PRICE REDUCTION



AVAILABLE FOR SALE

26,500 SF BUILDING ON 3/4 ACRE

EXCLUSIVELY REPRESENTED BY
THE FLYNN COMPANY

Michael Gallagher

mgallagher@flynnco.com

215-561-6565 x 151

Brendan Flynn

bflynn@flynnco.com

215-561-6565 x 152

Joseph Naselli

jnaselli@flynnco.com

215-561-6565 x 155

Property Description



2781 Roberts Avenue
Philadelphia, PA 19129



Asking Price: \$2,600,000



26,500 SF on 0.74 acres



Floorplate: 13,250 SF per floor



30 striped spaces



Zoned I-2 (Industrial)



One (1) loading dock
One (1) drive-in door



10' to finished ceiling
14' to underside of deck

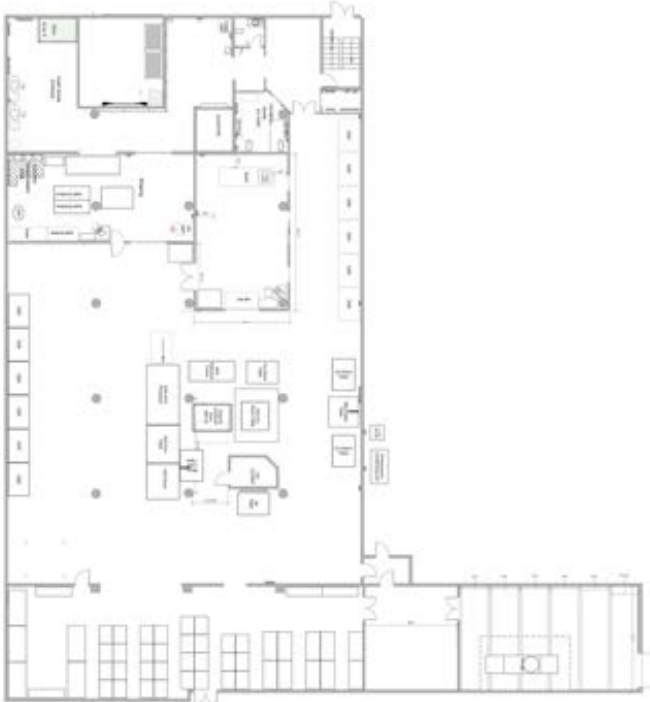


Built in 1960

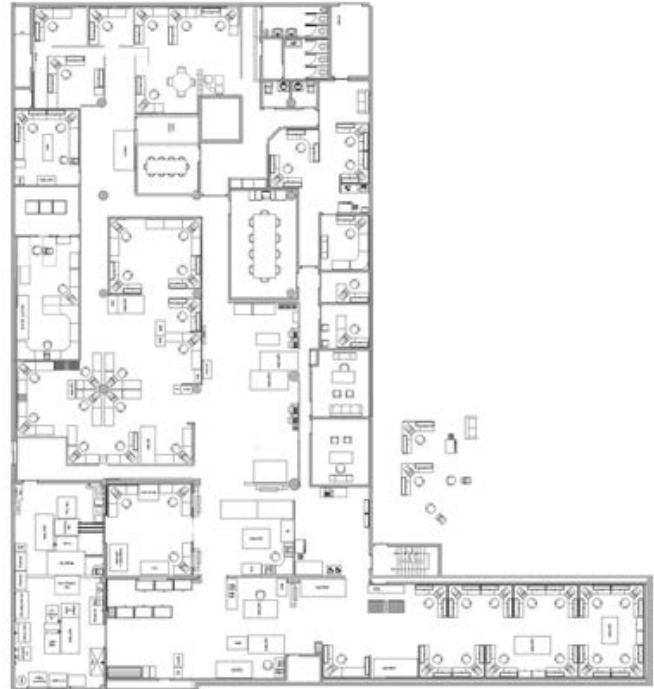


186' of frontage along Roberts Ave

Floor Plans



First Floor



Second Floor

Location





For the full Offering Memorandum, please contact:

The Flynn Company

Michael Gallagher

mgallagher@flynnco.com

(215) 561-6565 x151

Brendan Flynn

bflynn@flynnco.com

(215) 561-6565 x152

Joseph Naselli

jnaselli@flynnco.com

(215) 561-6565 x155