

796 Southpark Boulevard

Colonial Heights, VA

4,863 SF SPACE AVAILABLE | FOR LEASE



CONNIE JORDAN NIELSEN | connie.nielsen@thalhimer.com | 804 697 3569
ALICIA BROWN | alicia.brown@thalhimer.com | 804 697 3483



Independently Owned and Operated / A Member of the Cushman & Wakefield Alliance

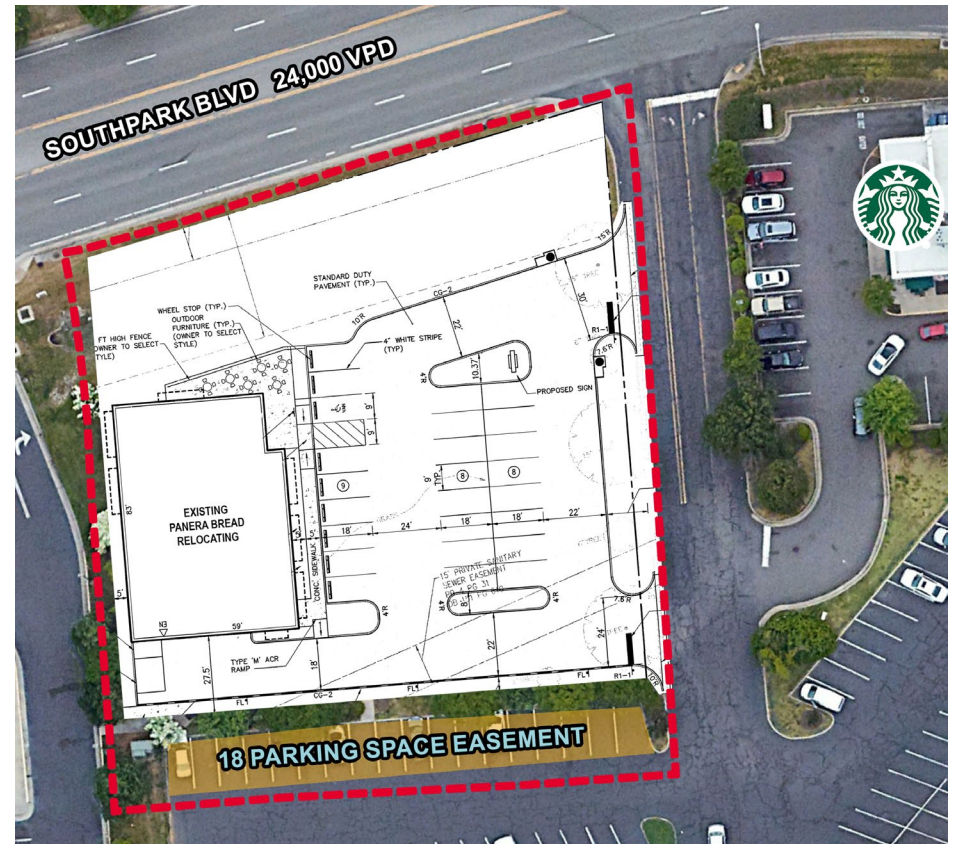
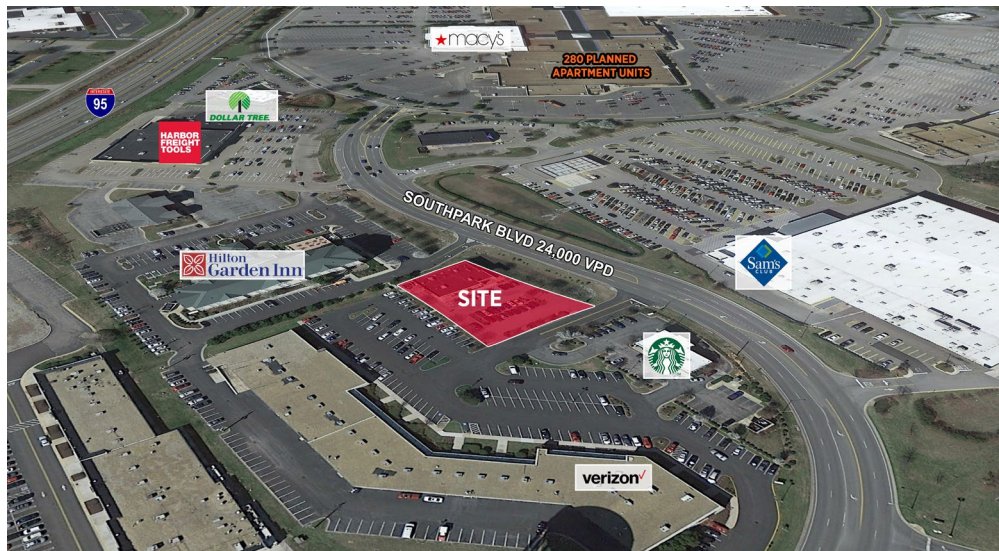
Cushman & Wakefield | Thalhimer © 2025. No warranty or representation, express or implied, is made to the accuracy or completeness of the information contained herein, and same is submitted subject to errors, omissions, change of price, rental or other conditions, withdrawal without notice, and to any special listing conditions imposed by the property owner(s). As applicable, we make no representation as to the condition of the property (or properties) in question.

796 Southpark Boulevard

Colonial Heights, VA

FEATURES

- 4,863 SF Freestanding Building (Potential Subdivision)
- Proven Restaurant Location
- Excellent Visibility
- Close proximity to Fort Gregg-Adams Army Base
- 24,000 VPD – Southpark Boulevard

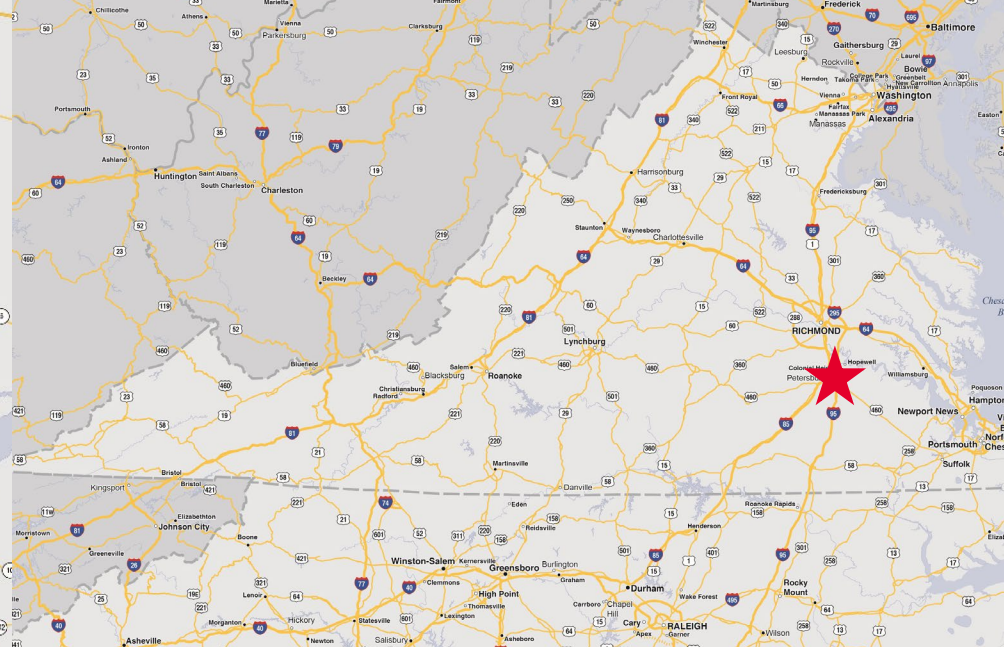
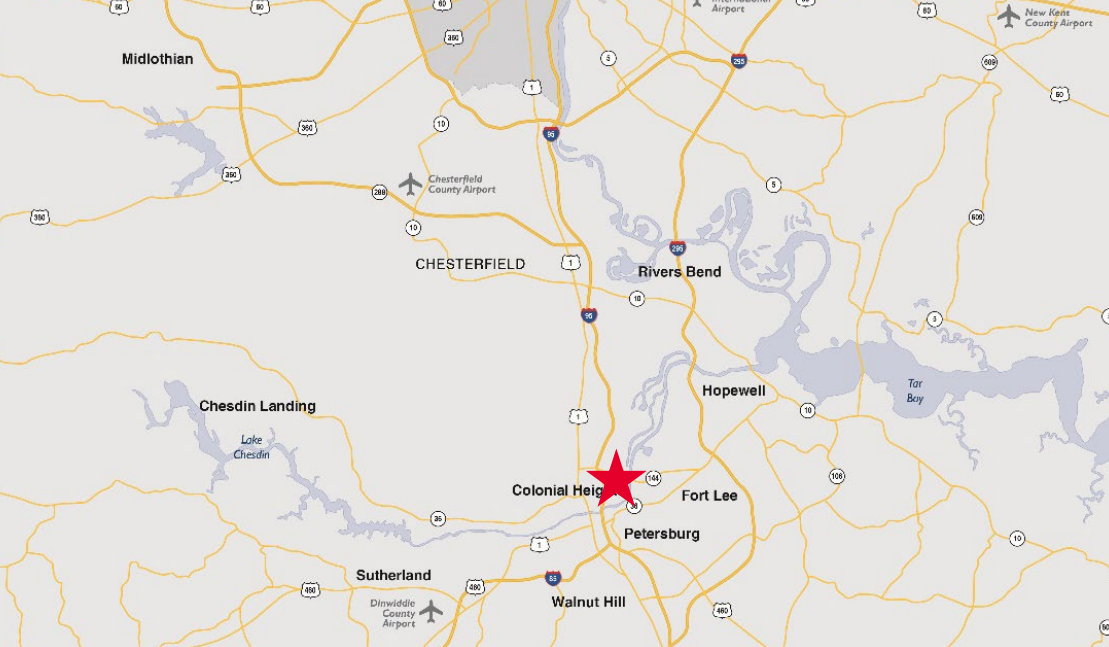


Demographics

	1 Mile	3 Miles	5 Miles
Population	3,693	49,878	98,510
No. of Households	1,535	17,624	35,175
Daytime Population	8,460	52,142	101,005
Avg. HH Income	\$120,641	\$95,884	\$95,137
Employees	3,940	18,410	34,900

Join Nearby Retailers & Co-Tenants





796 Southpark Boulevard

Colonial Heights, VA

For more information, please contact:

Connie Jordan Nielsen | connie.nielsen@thalhimer.com | 804 697 3569

Alicia Brown | alicia.brown@thalhimer.com | 804 697 3483



Thalhimer Center
1100 W. Broad Street
Glen Allen, VA 23060
thalhimer.com

Independently Owned and Operated / A Member of the Cushman & Wakefield Alliance

Cushman & Wakefield | Thalhimer © 2025. No warranty or representation, express or implied, is made to the accuracy or completeness of the information contained herein, and same is submitted subject to errors, omissions, change of price, rental or other conditions, withdrawal without notice, and to any special listing conditions imposed by the property owner(s). As applicable, we make no representation as to the condition of the property (or properties) in question.