



GOLD AND COMPANY, LLC

WWW.GOLDCOMMERCIAL.NET

Commercial Real Estate in the Baltimore Metropolitan Area



3615 E. Northern Parkway, Baltimore, MD 21206

Gold And Company, LLC

For More Information:

Jim Chivers
443.928.7522 cell
jim@goldcommercial.net

Will McCullough
410.292.2985 cell
will@goldcommercial.net

www.goldcommercial.net

- **+/- 8,178 sf Freestanding Retail Building**
- **FOR SALE / LEASE**
- **0.76 Acres**
- **C-1 Zoning—Baltimore City**
- **1.34 Acres**
- **Located at a Signalized Intersection**
- **Access to Public Transportation Nearby**
- **Enterprise Zone Area**
- **Contact For More Information**

This property offering is subject to change without notice. All information is deemed reliable but not guaranteed.



Gold And Company

Commercial Real Estate in the Baltimore Metropolitan Area

3615 E. Northern Parkway, Baltimore, MD

Additional Aerials



Jim Chivers / Will McCullough
Gold And Company, LLC
5601 Newbury St.
Baltimore, MD 21209

410.578.1300 (Office)

www.goldcommercial.net

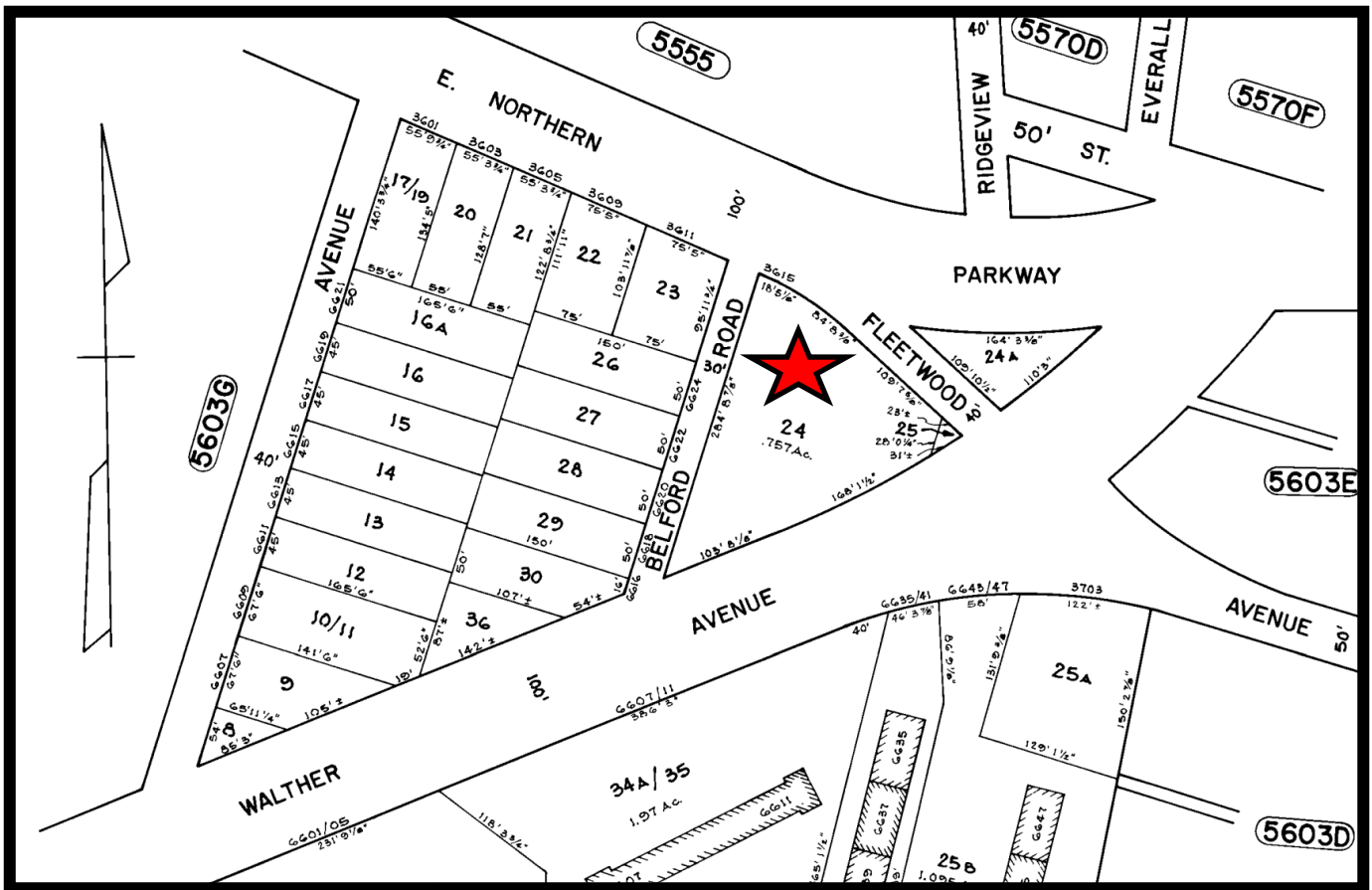


Gold And Company

Commercial Real Estate in the Baltimore Metropolitan Area

3615 E. Northern Parkway, Baltimore, MD

Block Map



Jim Chivers / Will McCullough
Gold And Company, LLC
5601 Newbury St.
Baltimore, MD 21209

410.578.1300 (Office)

www.goldcommercial.net

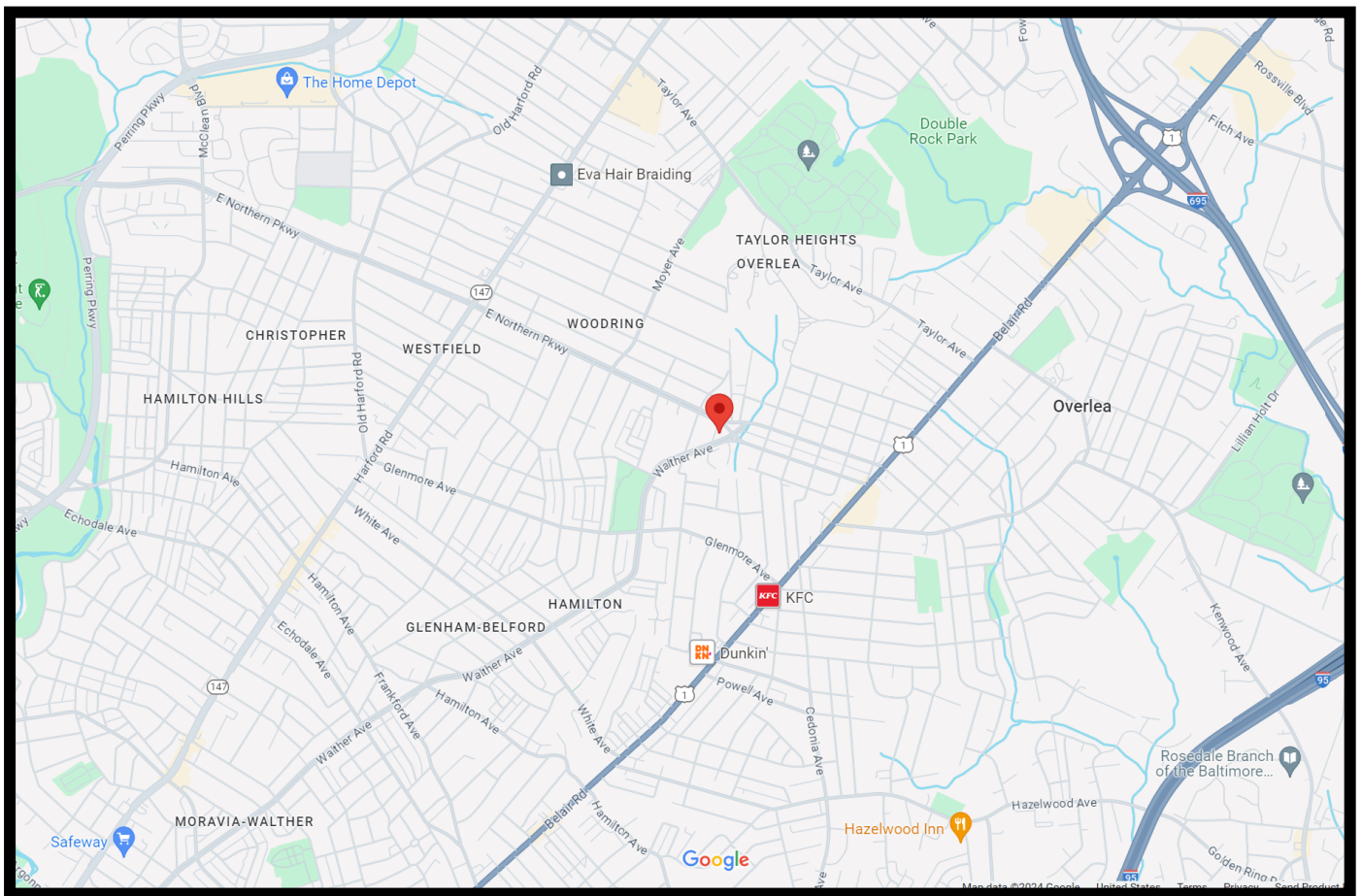


Gold And Company

Commercial Real Estate in the Baltimore Metropolitan Area

3615 E. Northern Parkway, Baltimore, MD

Map



Jim Chivers / Will McCullough
Gold And Company, LLC
5601 Newbury St.
Baltimore, MD 21209

410.578.1300 (Office)

www.goldcommercial.net