

AMT SCOTT

PROFESSIONAL CENTER II

FOR LEASE



9300 SE 91ST AVENUE / HAPPY VALLEY, OREGON 97086

CLASS A MEDICAL SPACES AVAILABLE

PROPERTY FEATURES



» 1,408 SF - 2,660 SF (contiguous) spaces available



» Starting Lease Rate: \$39.00 SF/Year, modified gross with base year



» Good location with close proximity to major hospitals



» Excellent views



» State of the art Class A medical office building



» Well established tenants and potential complementary referrals



» Kaiser Dental, Metropolitan Pediatrics, Women's Healthcare Associates & established practices create building synergy



» Aggressive deals for qualified tenants



» Modified gross includes all operating expenses except janitorial services for each suite



» Ample parking



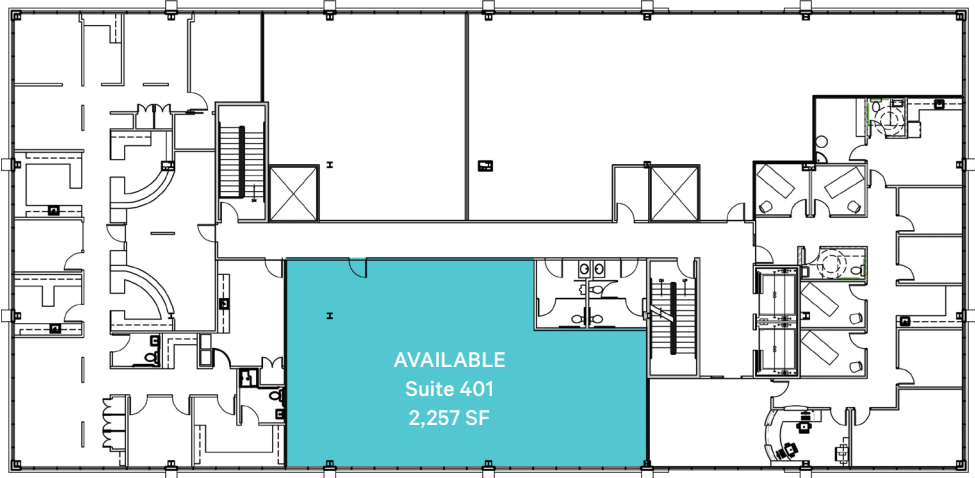
AVAILABILITES

FLOOR	SUITE	SPACE USE	STARTING LEASE RATE	LEASE TYPE	SIZE/±SF	CONDITION
1	100	Medical	\$39.00 SF/Year	Modified gross with base year	2,526 SF	2nd generation medical
1	102	Medical	\$39.00 SF/Year	Modified gross with base year	1,408 SF	Shell
4	401	Medical	\$39.00 SF/Year	Modified gross with base year	2,257 SF	Shell

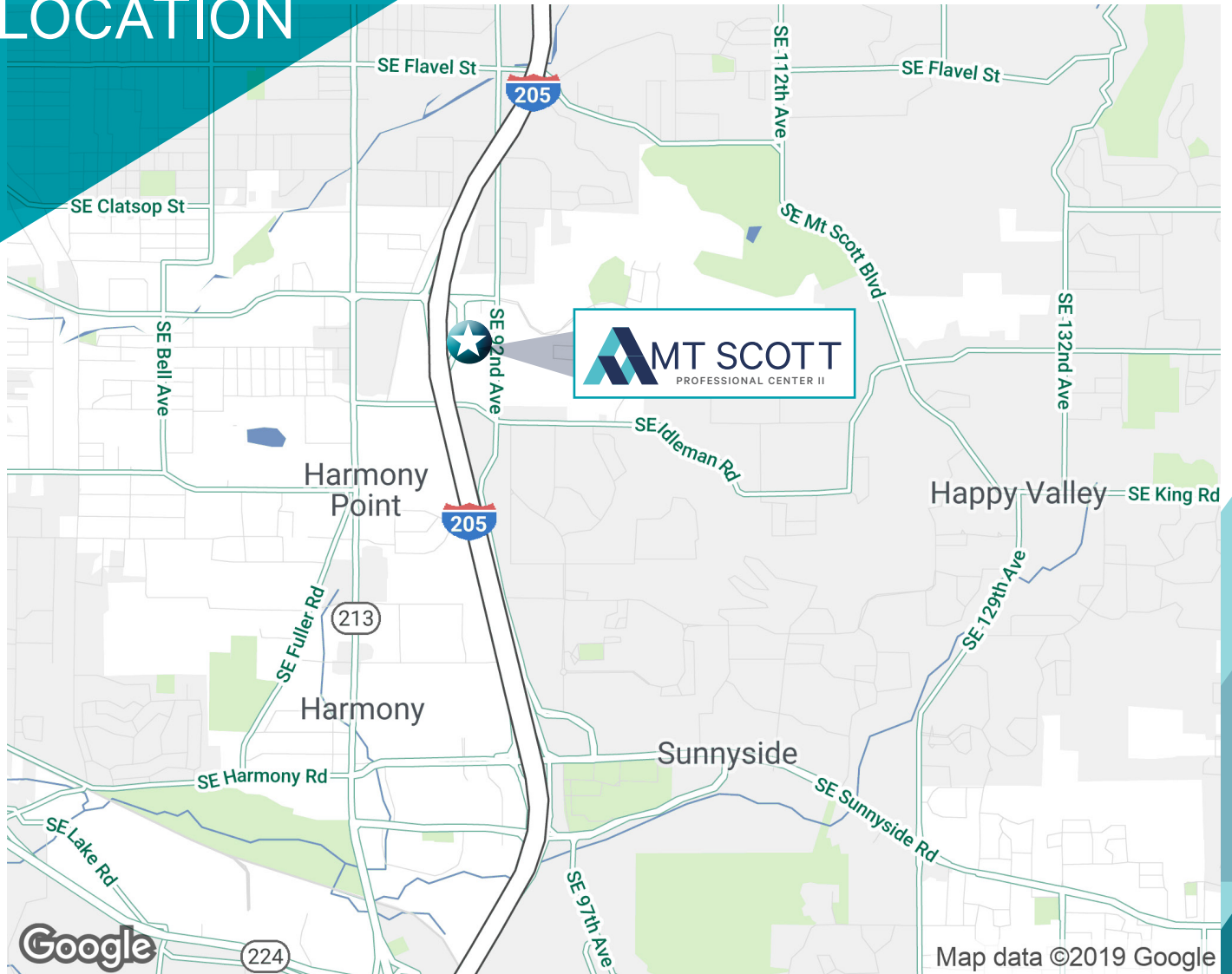
FLOOR 1



FLOOR 4



LOCATION



FOR MORE INFORMATION, CONTACT:

BRIAN NORTON

First Vice President

+1 503 221 4871

brian.norton@cbre.com

Licensed in WA & OR

CBRE, Inc. | 1300 SW Fifth Avenue | 35th Floor | Portland, OR 97201

CBRE

© 2025 CBRE, Inc. All rights reserved. This information has been obtained from sources believed reliable, but has not been verified for accuracy or completeness. Any projections, opinions, or estimates are subject to uncertainty. The information may not represent the current or future performance of the property. You and your advisors should conduct a careful, independent investigation of the property and verify all information. Any reliance on this information is solely at your own risk. CBRE and the CBRE logo are service marks of CBRE, Inc. and/or its affiliated or related companies in the United States and other countries. All other marks displayed on this document are the property of their respective owners. Photos herein are the property of their respective owners and use of these images without the express written consent of the owner is prohibited.