



# RETAIL/OFFICE SUITE

15 S. PARKE STREET | ABERDEEN, MARYLAND 21001

FOR  
LEASE

SUITE 200

2,000 SF  
AVAILABLE



**MACKENZIE**

COMMERCIAL REAL ESTATE SERVICES, LLC



# PROPERTY OVERVIEW

## HIGHLIGHTS:

- 2,000 SF  $\pm$  available inline
- 2 restrooms located at end of common hallway
- Ample surface parking
- Situated in the heart of Aberdeen
- Located just off of Pulaski Highway/Route 40
- Easy access to I-95
- Close proximity to Aberdeen Proving Ground
- Convenient to many nearby amenities, shopping, and dining destinations

AVAILABLE:

2,000 SF  $\pm$  (SUITE 200)

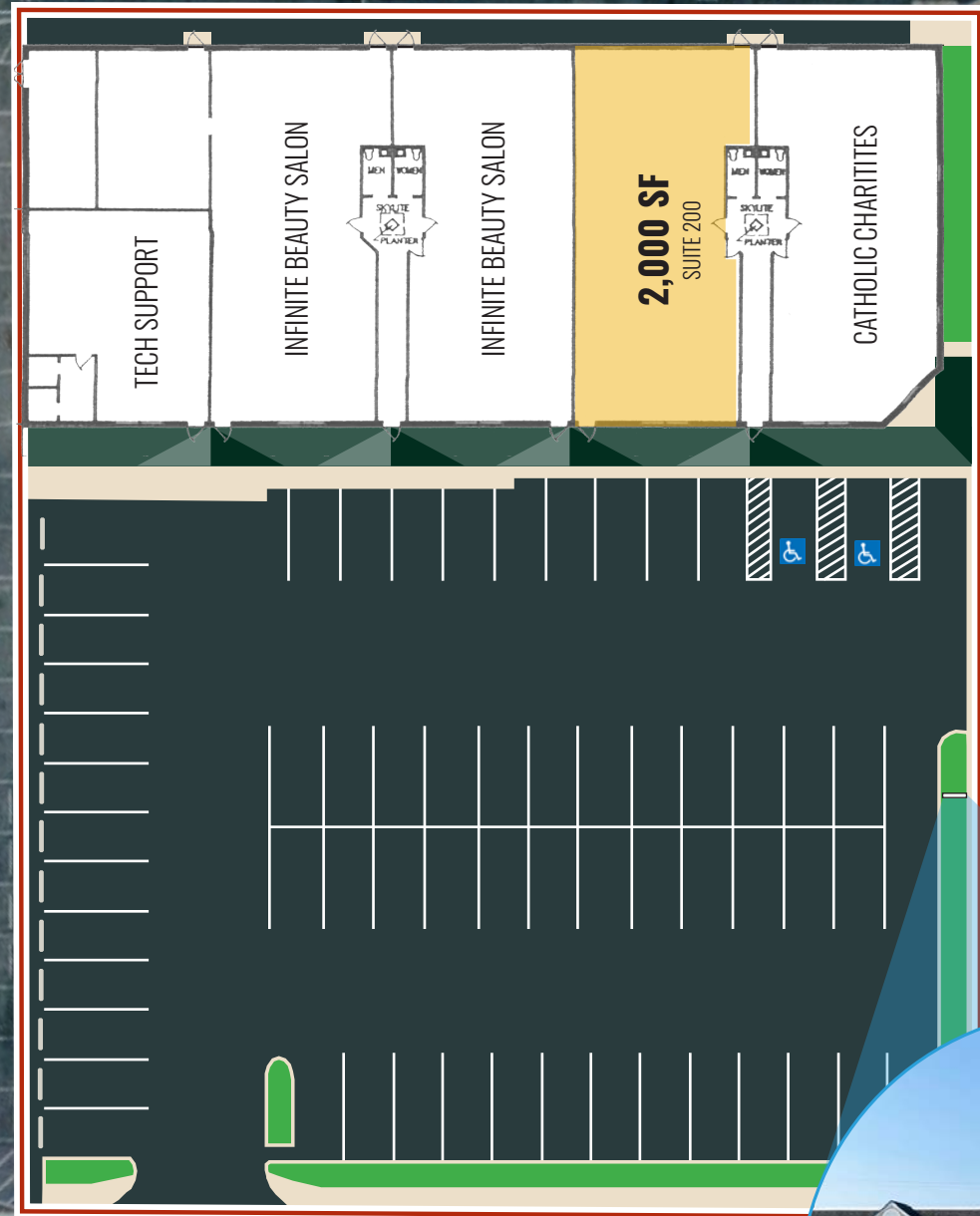
ZONING:

TOD (DOWNTOWN - T6)

RENTAL RATE:

**SUITE 200 - \$2,500/MO.,**  
NET OF UTILITIES

CURTIS ST



S PAKE ST

PYLON SIGNAGE

BUCHANAN ALLEY

GOOGLE STREET VIEW

15 SOUTH PARKE STREET

CATHOLIC CHARITIES

SIGNAGE

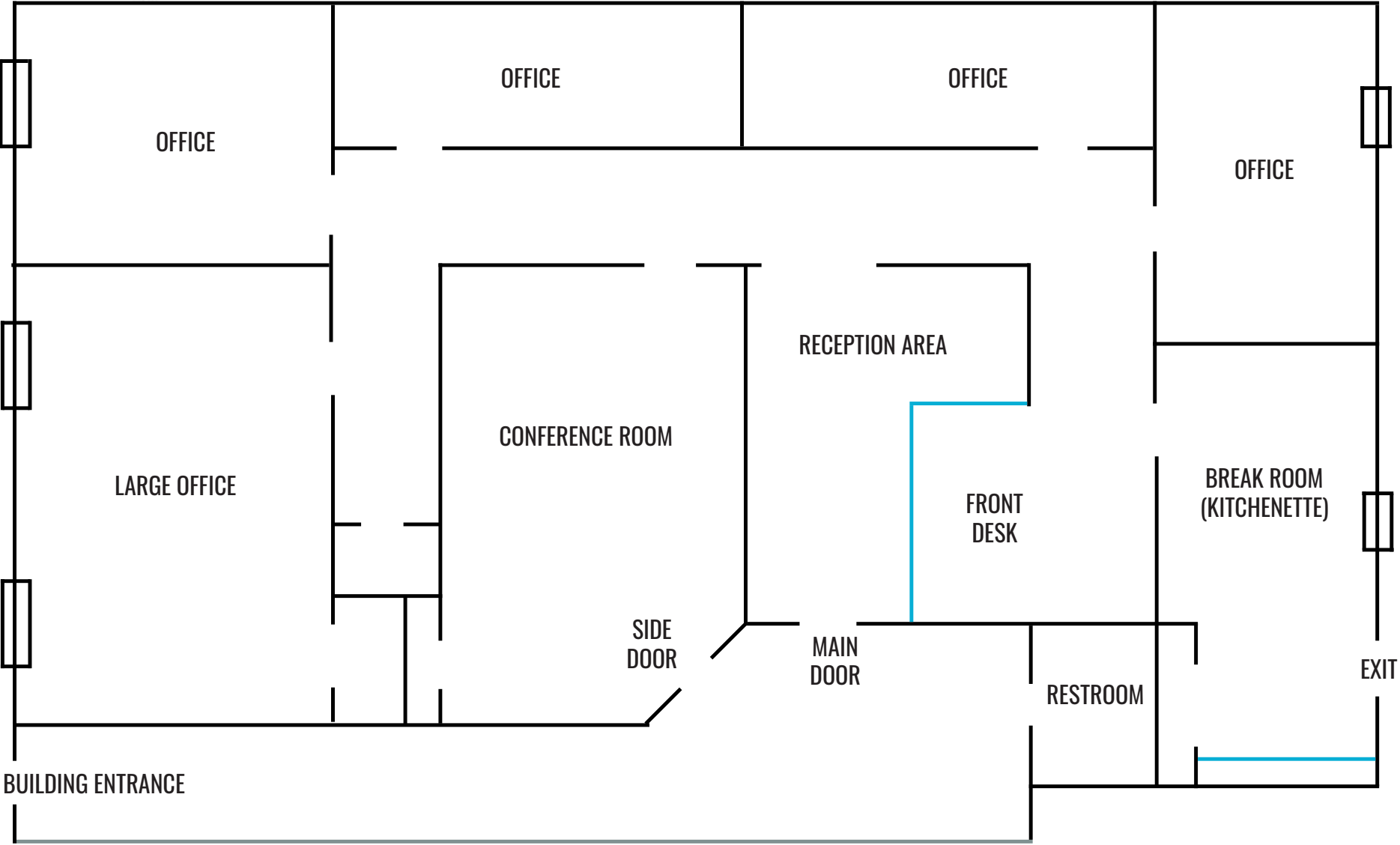
Infinite Beauty Salon

Infinite Beauty Salon

TECH

# FLOOR PLAN: SUITE 200

2,000 SF





# LOCAL BIRDSEYE





# MARKET AERIAL





# DEMOGRAPHICS

2023

RADIUS:

1 MILE

3 MILES

5 MILES

## RESIDENTIAL POPULATION



10,016

25,628

51,716

## DAYTIME POPULATION



9,165

25,817

52,182

## AVERAGE HOUSEHOLD INCOME



\$79,996

\$106,951

\$112,953

## NUMBER OF HOUSEHOLDS



4,033

10,238

20,914

## MEDIAN AGE

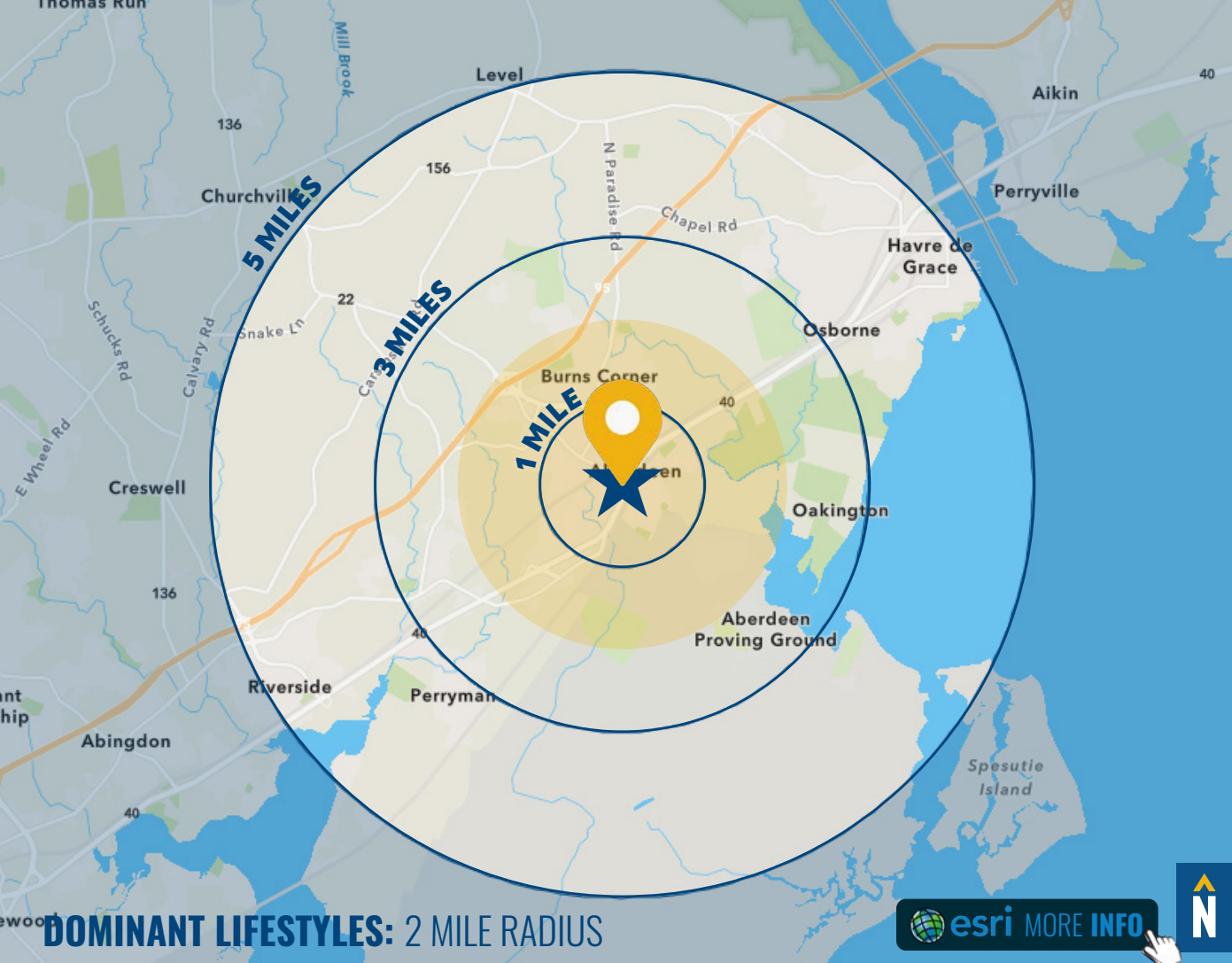


37.2

39.9

40.6

FULL DEMOS REPORT



**27%**  
PARKS  
AND REC



Many of these families are two-income married couples approaching retirement age. They are comfortable in their jobs and their homes and budget wisely, but do not plan on retiring anytime soon or moving.

Median Age: **40.9**

Median Household Income: **\$60,000**

**21%**  
METRO FUSION



Metro Fusion is a young, diverse market made up of hard-working residents that are dedicated to climbing the ladders of their professional and social lives. They spend money readily unless saving.

Median Age: **29.3**

Median Household Income: **\$35,700**

**11%**  
PLEASANTVILLE



Prosperous domesticity best describes these settled denizens. They maintain their higher incomes and standard of living with dual incomes, and shop online and in a variety of stores, from upscale to discount.

Median Age: **42.6**

Median Household Income: **\$92,900**



# FOR MORE INFO **CONTACT:**



## **MIKE RUOCCO**

*SENIOR VICE PRESIDENT & PRINCIPAL*

**410.494.4868**

**MRUOCCO@mackenziecommercial.com**



## **PATRICK J. SMITH**

*REAL ESTATE ADVISOR*

**847.346.2701**

**PJSMITH@mackenziecommercial.com**



VISIT **PROPERTY PAGE** FOR MORE INFORMATION.



# **MACKENZIE**

COMMERCIAL REAL ESTATE SERVICES, LLC

**410-821-8585**

**2328 W. Joppa Road, Suite 200  
Lutherville, MD 21093**

OFFICES IN: ANNAPOLIS, MD   BALTIMORE, MD   BEL AIR, MD   COLUMBIA, MD   **LUTHERVILLE, MD**   CHARLOTTESVILLE, VA

**[www.MACKENZIECOMMERCIAL.com](http://www.MACKENZIECOMMERCIAL.com)**

No warranty or representation, expressed or implied, is made as to the accuracy of the information contained herein, and same is submitted subject to errors, omissions, change of price, rental or other conditions, withdrawal without notice, and to any specific listing conditions imposed by our principals.