

COTTONWOOD PLAZA

OFFICE SPACE FOR LEASE | 350 N MITCHEL ST, BOISE, ID 83704



CONTACT



KEKAULA KANIHO

kekaula@tokcommercial.com
208.947.0853

HIGHLIGHTS



- A raised data center floor, a backup generator, and UPS are available.
- Great location just off Mitchell and Emerald Street.
- Ample parking with 5 spaces per 1000 SF of space leased.
- Building signage is negotiable.
- Fiber to building and premises.

DETAILS

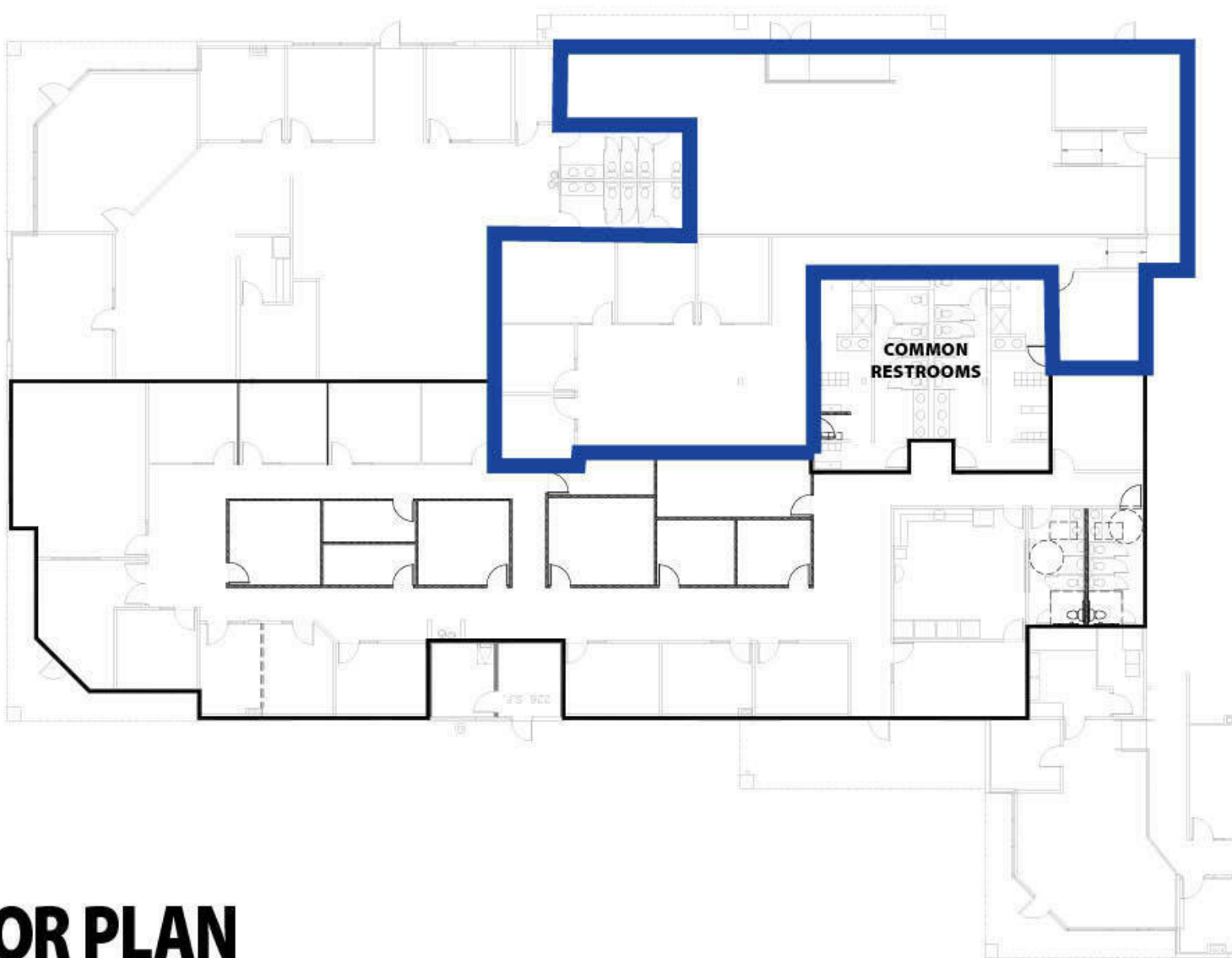


BLDG SIZE:	43,142 SF
AVAILABLE SIZE:	5,625 SF
AVAILABLE SPACE:	Suite 398-A
LEASE RATE:	\$13.00/SF/yr
EST. NNN:	\$6.00/SF/yr
AVAILABLE:	Now

UPDATED: MAY 11, 2026

THIS PROPERTY IS EXCLUSIVELY MARKETED BY TOK BOISE LLC DBA TOK COMMERCIAL

This information was obtained from sources believed reliable but cannot be guaranteed. Any opinions or estimates are used for example only.



FLOOR PLAN

UPDATED: MAY 11, 2026

THIS PROPERTY IS EXCLUSIVELY MARKETED BY TOK BOISE LLC DBA TOK COMMERCIAL

This information was obtained from sources believed reliable but cannot be guaranteed. Any opinions or estimates are used for example only.



UPDATED: MAY 11, 2026

THIS PROPERTY IS EXCLUSIVELY MARKETED BY TOK BOISE LLC DBA TOK COMMERCIAL

This information was obtained from sources believed reliable but cannot be guaranteed. Any opinions or estimates are used for example only.



UPDATED: MAY 11, 2026

THIS PROPERTY IS EXCLUSIVELY MARKETED BY TOK BOISE LLC DBA TOK COMMERCIAL

This information was obtained from sources believed reliable but cannot be guaranteed. Any opinions or estimates are used for example only.