

**AVAILABLE
FOR LEASE**

BDO 525

525 N 530 W, Ogden, UT 84404

CONCEPTUAL BUILDING SHOWN



Business Depot Ogden (BDO) is a 1,118-acre master planned business park with 250 build-to-suit available acres. BDO has 5.2 million square feet of new construction, 6,500,000 existing square feet and 500,000 square feet of available space. BDO, formerly a military installation, has been transformed into a business and industrial park and is a vibrant, growing park that has undergone significant changes since the transfer to Ogden City in 1997. BDO has more than 13 million square feet of industrial and office space.

10 DOCK HIGH DOORS

5 GROUND LEVEL DOORS

28' CLEAR HEIGHT

BUILDING SIZE: 40,404 SF

MAXIMUM SIZE: 24,243 SF

SMALLEST SIZE: 8,081 SF

DELIVERY: Q4 2022

FLOOR: 1 STORY

**CONSTRUCTION TYPE:
CONCRETE TILT UP**

CONTACT

Cameron Cook

801.399.9885 Office

cameroncook@boyercompany.com

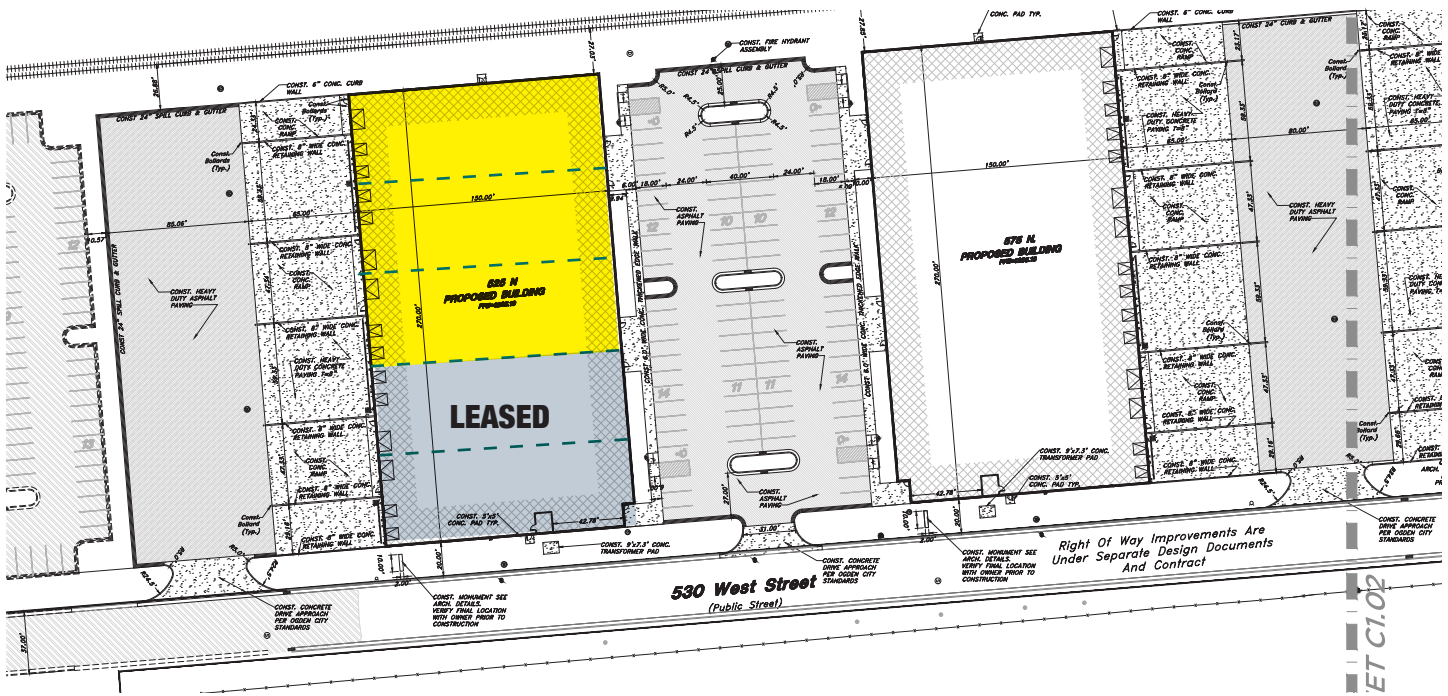
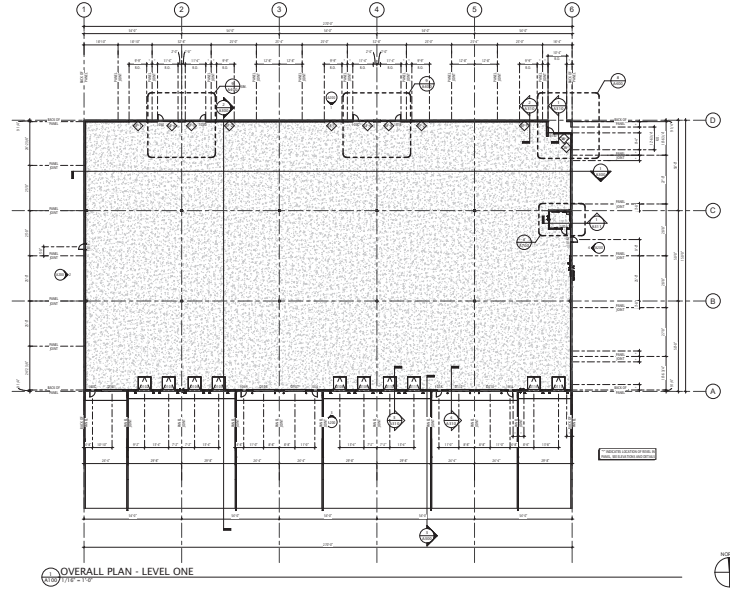
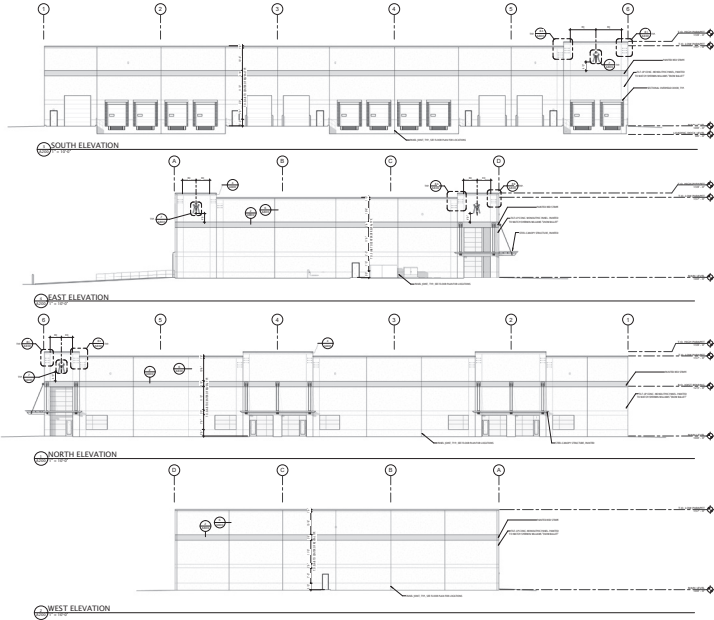


BUSINESS DEPOT
Ogden

www.boyerbdo.com

**AVAILABLE
FOR LEASE**

BDO 525
525 N 530 W, Ogden, UT 84404



CONTACT

Cameron Cook

801.399.9885 Office

cameroncook@boyercompany.com



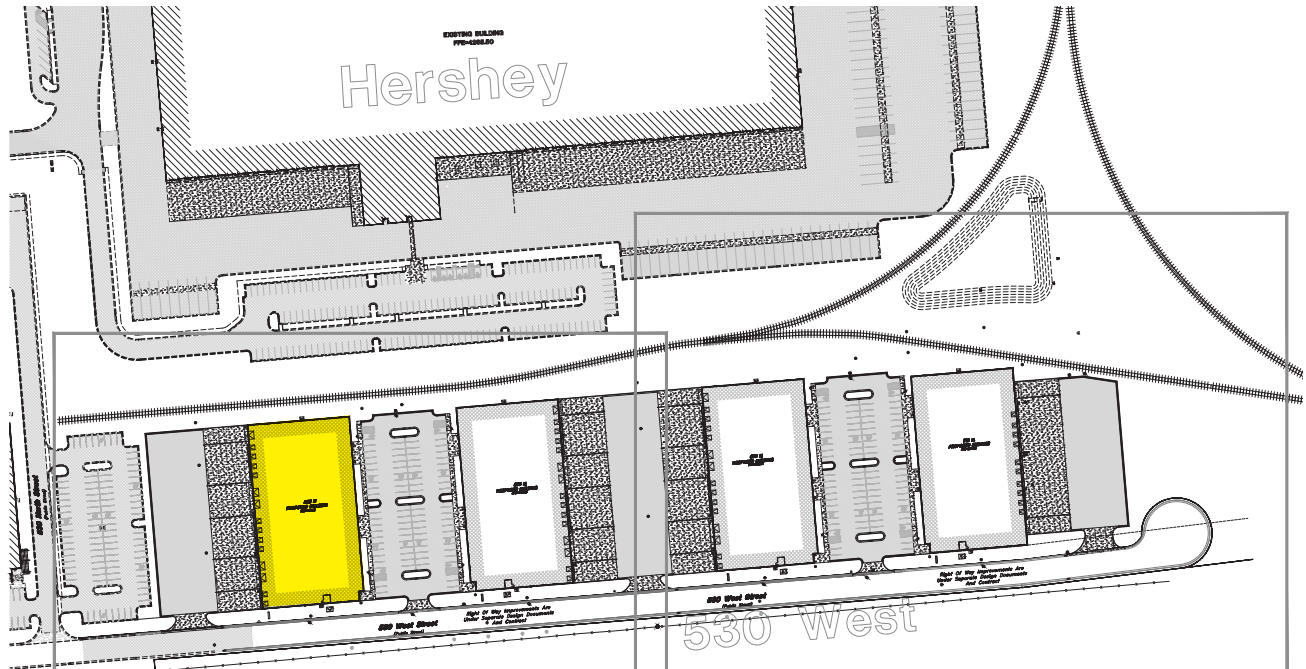
BUSINESS DEPOT
Ogden

www.boyerbdo.com

**AVAILABLE
FOR LEASE**

BDO 525

525 N 530 W, Ogden, UT 84404



CONTACT

Cameron Cook

801.399.9885 Office

cameroncook@boyercompany.com



BUSINESS DEPOT
Ogden

www.boyerbdo.com