

**For Lease
800 SF**

7-Eleven Center

Knott Ave / Cerritos Ave
Stanton, CA

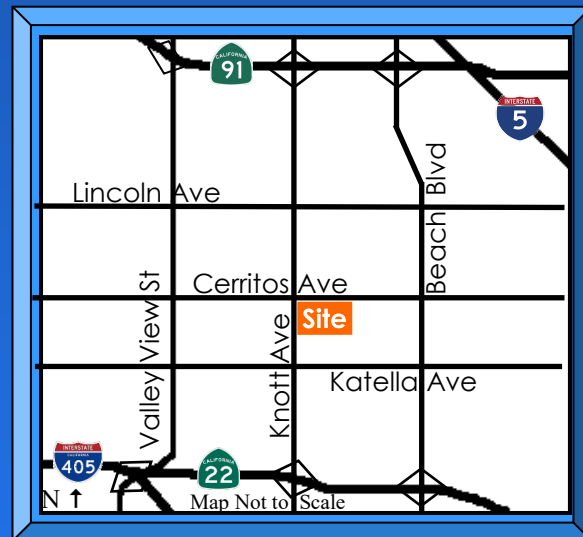


DEMOGRAPHICS:	1 Mile	2 Mile	3 Mile
Population:	35,724	120,492	260,605
Avg. HH Income:	\$87,818	\$89,179	\$93,284

ESRI (2019 est)

- * **7-11 Anchored Center**
- * **Busy Signalized Intersection**
- * **Excellent Parking**

Remodeled Center with easy access to both Knott Ave & Cerritos Ave



Terry F. Parker

(949) 334-4050 Office
(949) 412-2020 Cell
tparker@pcbcgroup.com
DRE License #00401723

Jennie Parker

(949) 334-4180 Office
(949) 413-5588 Cell
jparker@pcbcgroup.com
DRE License #01362950

View web for all Parker Commercial represented properties at www.pcbcgroup.com.



Brokerage Company, Inc.

No warranty or representations, either expressed or implied, is made by Parker Commercial Brokerage Company, Inc., its agents or staff, as to the accuracy of the information contained herein, and may be withdrawn or changed without notice; furthermore, same is submitted subject to any errors or omissions, including but not limited to size, rental rates, estimated other charges of leases, change of price, listing conditions, or other conditions imposed by the ownership.

**For Lease
800 SF**

7-Eleven Center

Knott Ave / Cerritos Ave
Stanton, CA



**Next Door
to 7-Eleven!**

800 SF



★ **Image Taken from 24/7
Live Stream Security Cameras**

**PARKER
COMMERCIAL**

Brokerage Company, Inc.

Terry F. Parker
(949) 334-4050 Office
(949) 412-2020 Cell
tparker@pcbcgroup.com
DRE License #00401723

Jennie Parker
(949) 334-4180 Office
(949) 413-5588 Cell
jparker@pcbcgroup.com
DRE License #01362950

View web for all Parker Commercial represented properties at www.pcbcgroup.com.

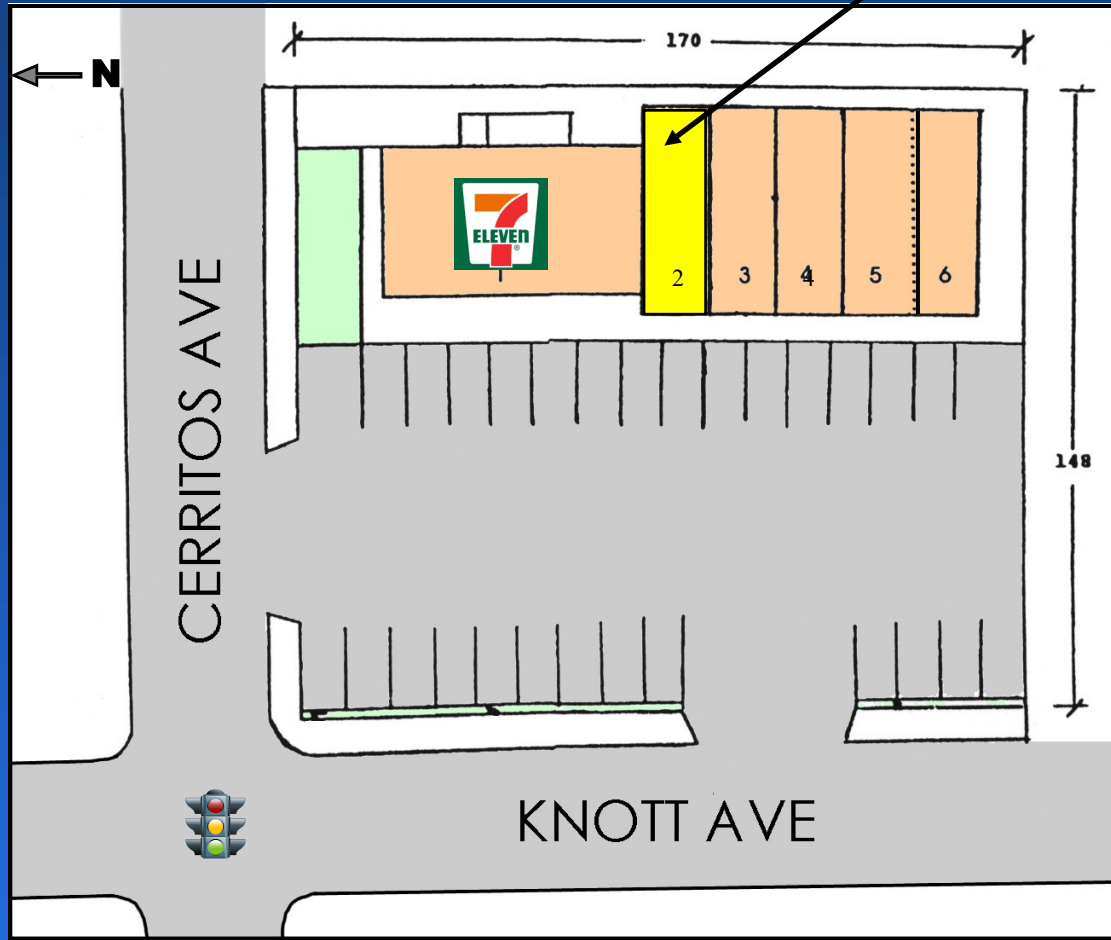
No warranty or representations, either expressed or implied, is made by Parker Commercial Brokerage Company, Inc., its agents or staff, as to the accuracy of the information contained herein, and may be withdrawn or changed without notice; furthermore, same is submitted subject to any errors or omissions, including but not limited to size, rental rates, estimated other charges of leases, change of price, listing conditions, or other conditions imposed by the ownership.

**For Lease
800 SF**

7-Eleven Center

Knott Ave / Cerritos Ave
Stanton, CA

**FOR LEASE
800 Sq Ft**



Plan#	Tenant	SF+/-	Address:
1.	7-Eleven	2,400 sq. ft.	10500 Knott Ave.
★ 2.	FOR LEASE	800 sq. ft.	10506 Knott Ave.
3.	Sharon Hair Salon	800 sq. ft.	10512 Knott Ave.
4.	Glitter Nail Bar	800 sq. ft.	10518 Knott Ave.
5.	Cleaners	800 sq. ft.	10524 Knott Ave.
6.	Chiropractor	800 sq. ft.	10530 Knott Ave.

Terry F. Parker
 (949) 334-4050 Office
 (949) 412-2020 Cell
 tparker@pcbcgroup.com
 DRE License #00401723

Jennie Parker
 (949) 334-4180 Office
 (949) 413-5588 Cell
 jparker@pcbcgroup.com
 DRE License #01362950

View web for all Parker Commercial represented properties at www.pcbcgroup.com.

**PARKER
COMMERCIAL**
 Brokerage Company, Inc.

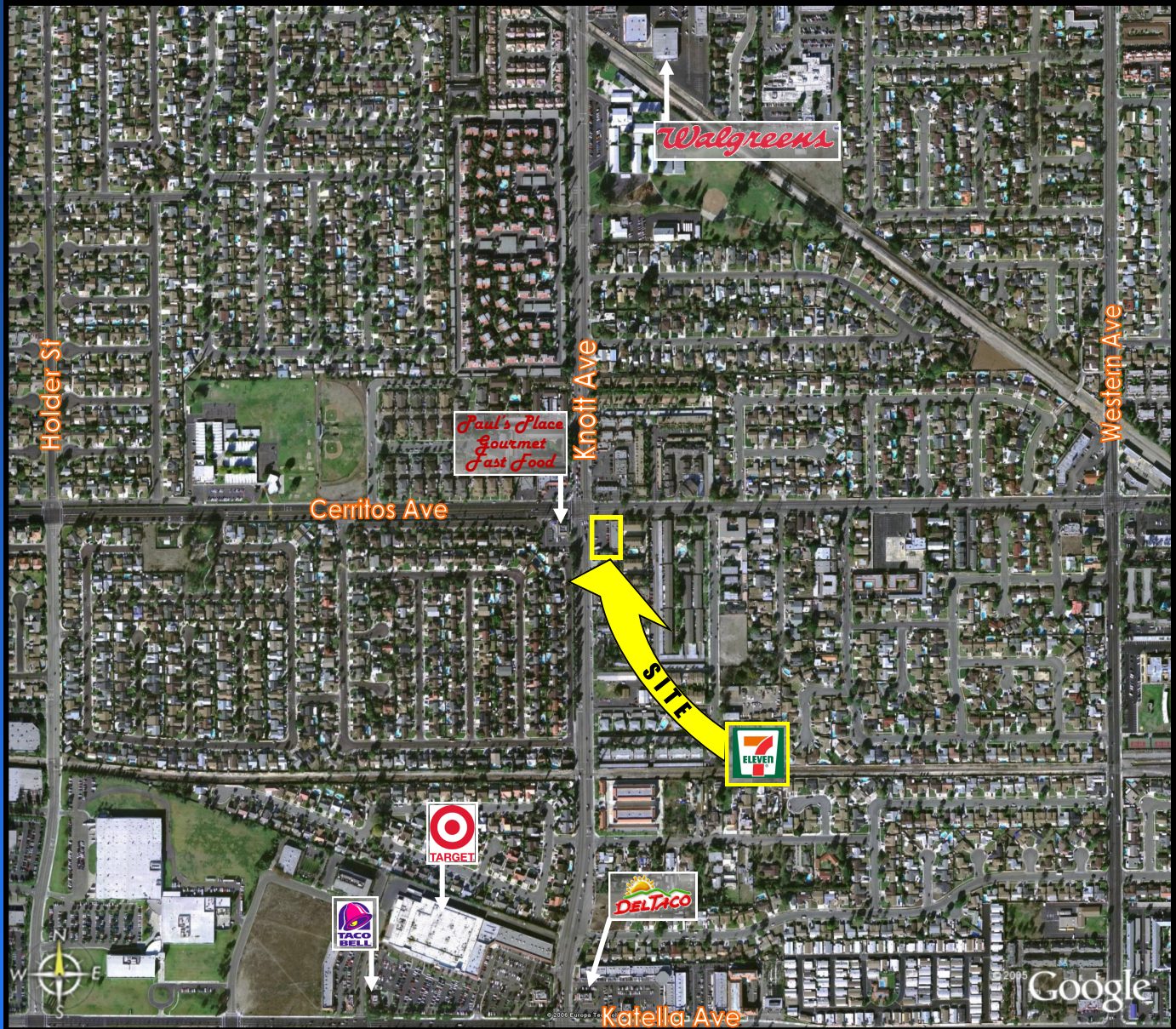
No warranty or representations, either expressed or implied, is made by Parker Commercial Brokerage Company, Inc., its agents or staff, as to the accuracy of the information contained herein, and may be withdrawn or changed without notice; furthermore, same is submitted subject to any errors or omissions, including but not limited to size, rental rates, estimated other charges of leases, change of price, listing conditions, or other conditions imposed by the ownership.

**For Lease
800 SF**

7-Eleven Center

Knott Ave / Cerritos Ave
Stanton, CA

Aerial



The businesses shown in this aerial, reflect some, but not all stores in the area. Same is provided by Parker Commercial Brokerage Company Inc., without warranty, is subject to errors and omissions, and is further provided subject to any prospective tenant making its own advance field verification, as to which stores exist within this area, or which stores that may be entertaining moving in to, or out of, this area.

Terry F. Parker
(949) 334-4050 Office
(949) 412-2020 Cell
tparker@pcbcgroup.com
DRE License #00401723

Jennie Parker
(949) 334-4180 Office
(949) 413-5588 Cell
jparker@pcbcgroup.com
DRE License #01362950



Brokerage Company.

View web for all Parker Commercial represented properties at www.pcbcgroup.com.

No warranty or representations, either expressed or implied, is made by Parker Commercial Brokerage Company, Inc., its agents or staff, as to the accuracy of the information contained herein, and may be withdrawn or changed without notice; furthermore, same is submitted subject to any errors or omissions, including but not limited to size, rental rates, estimated other charges of leases, change of price, listing conditions, or other conditions imposed by the ownership.