

# FOR LEASE

## Lake Elmo Bank Building

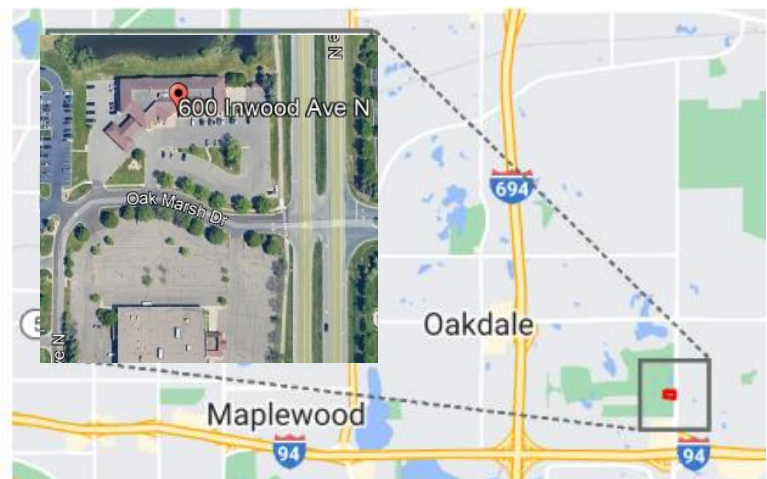
600 Inwood Avenue N, Oakdale MN 55128



### PROPERTY DETAILS

- Two story professional office building conveniently located in Oakdale off I94.
- Local ownership and onsite Property Management
- Building conference room
- Vending area
- Underground parking garage with car wash
- Shower/locker room on site.
- Monument signage
- Building Size: 35,679 SF

### LOCATION



### LISTING DETAILS

- Suite 130
- 760 SF Gross
- Lease rate: From \$30.00/SF Gross (\$1,900/month)
- First floor suite overlooking Oak Marsh Golf Course with three private offices.



**CROSSROADS**  
PROPERTIES

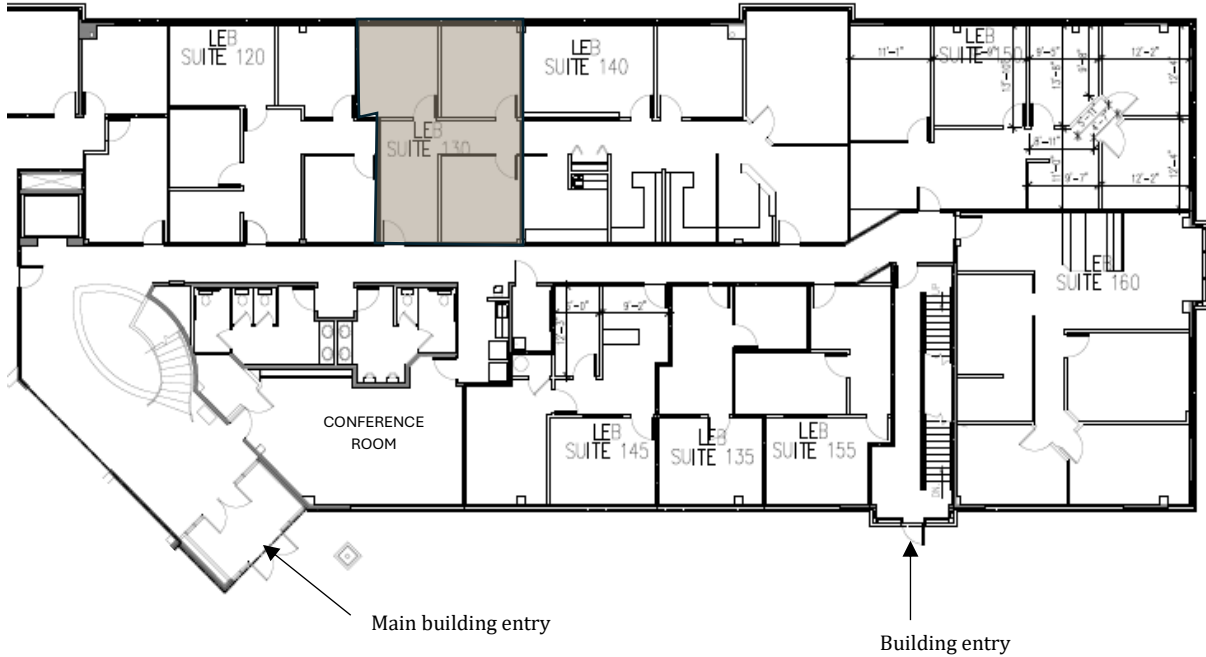
Dawn Wessels/Amy Johnson/Steve Poechmann  
651-731-0708 Option 2 For Sales and Leasing  
7250 Hudson Boulevard N, Suite 160, Oakdale, MN 55128  
[www.crossroadsproperties.net](http://www.crossroadsproperties.net)

**FOR LEASE**

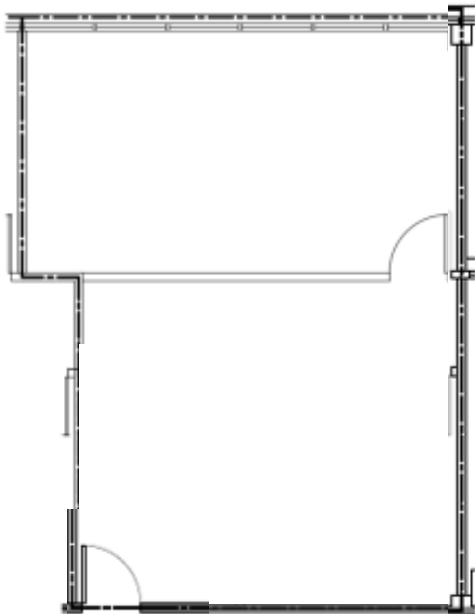
**Lake Elmo Bank Building**

**600 Inwood Avenue N, Oakdale MN 55128**

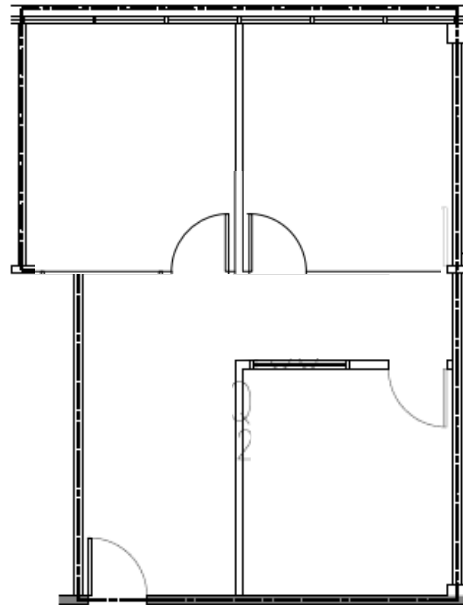
**First Floor**



**Suite 130 Current Layout**



**Suite 130 Proposed**



**CROSSROADS**  
PROPERTIES

Dawn Wessels/Amy Johnson/Steve Poechmann

651-731-0708 Option 2 For Sales and Leasing

7250 Hudson Boulevard N, Suite 160, Oakdale, MN 55128

[www.crossroadsproperties.net](http://www.crossroadsproperties.net)