

FOR SALE

RETAIL BUILDING AT PORTSMOUTH & VICTORY BOULEVARDS
4301 Portsmouth Blvd | Portsmouth, VA 23701



S.L. NUSBAUM
REALTY CO.



MICHAEL MYERS

Senior Vice President | Partner

O. 757.640.2273

C. 757.679.3273

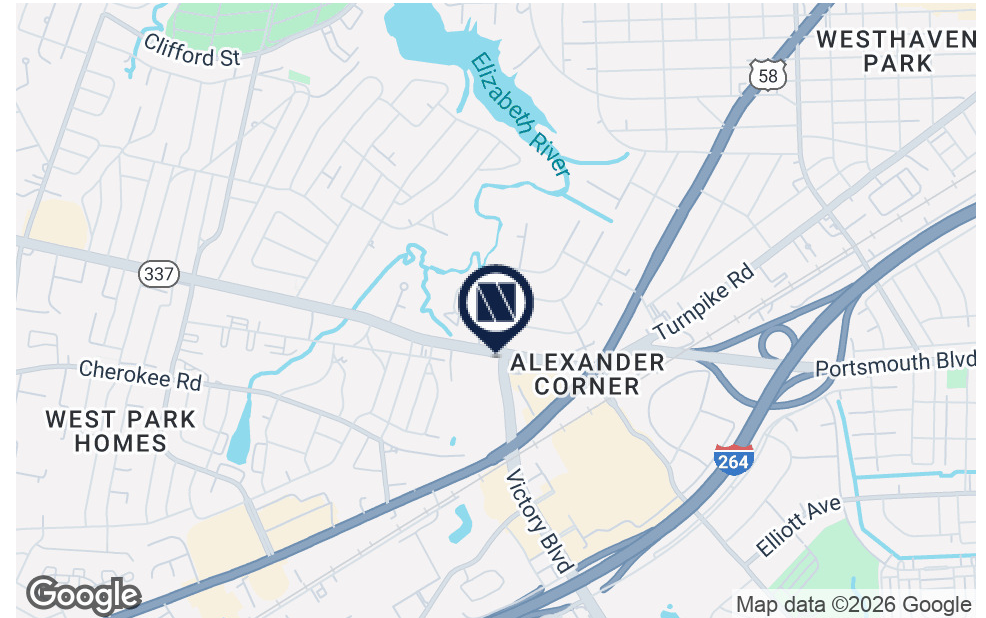
mmyers@slnusbaum.com

EXECUTIVE SUMMARY

RETAIL BUILDING AT PORTSMOUTH & VICTORY BOULEVARDS
4301 Portsmouth Blvd | Portsmouth, VA 23701



S.L. NUSBAUM
REALTY CO.



OFFERING SUMMARY

Sale Price:	\$500,000
Building Size:	1,637 +/- SF
Lot Size:	0.40 Acres
Zoning:	GMU
Flood Zone:	X (500 Year)

PROPERTY OVERVIEW

Retail building, currently used car sales lot (Top Gear Auto).

PROPERTY HIGHLIGHTS

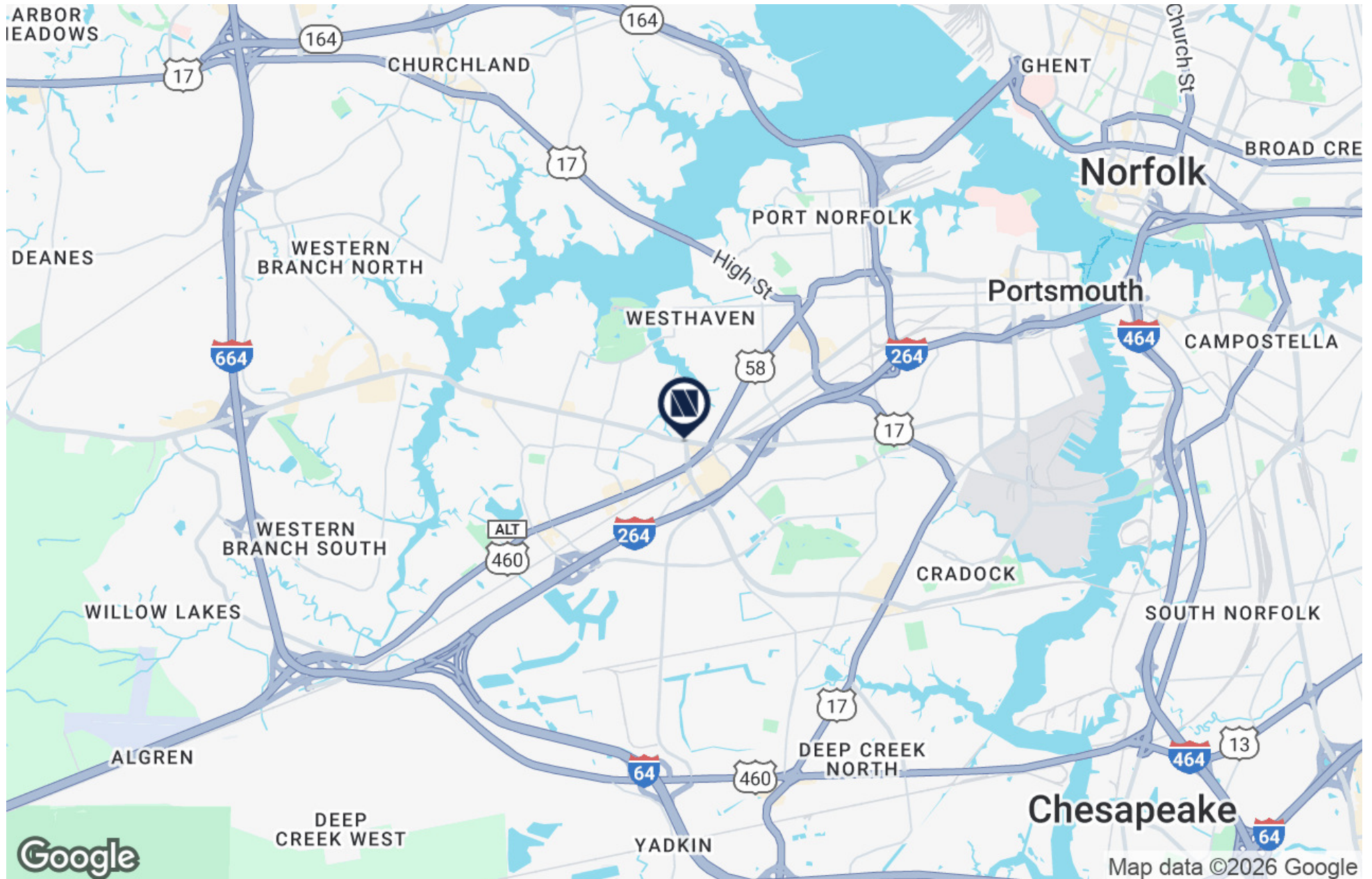
- Property is at a signalized intersection with two entry/exit points from Portsmouth Boulevard or Victory Boulevard.
- Ability to park 40 + cars.
- Zoned GMU, the most flexible zoning in Portsmouth, which allows most office, retail and service uses.
- Car sales permitted by right - currently a used car sales lot.
- Available immediately!!

LOCATION MAP

RETAIL BUILDING AT PORTSMOUTH & VICTORY BOULEVARDS
4301 Portsmouth Blvd | Portsmouth, VA 23701



S.L. NUSBAUM
REALTY CO.

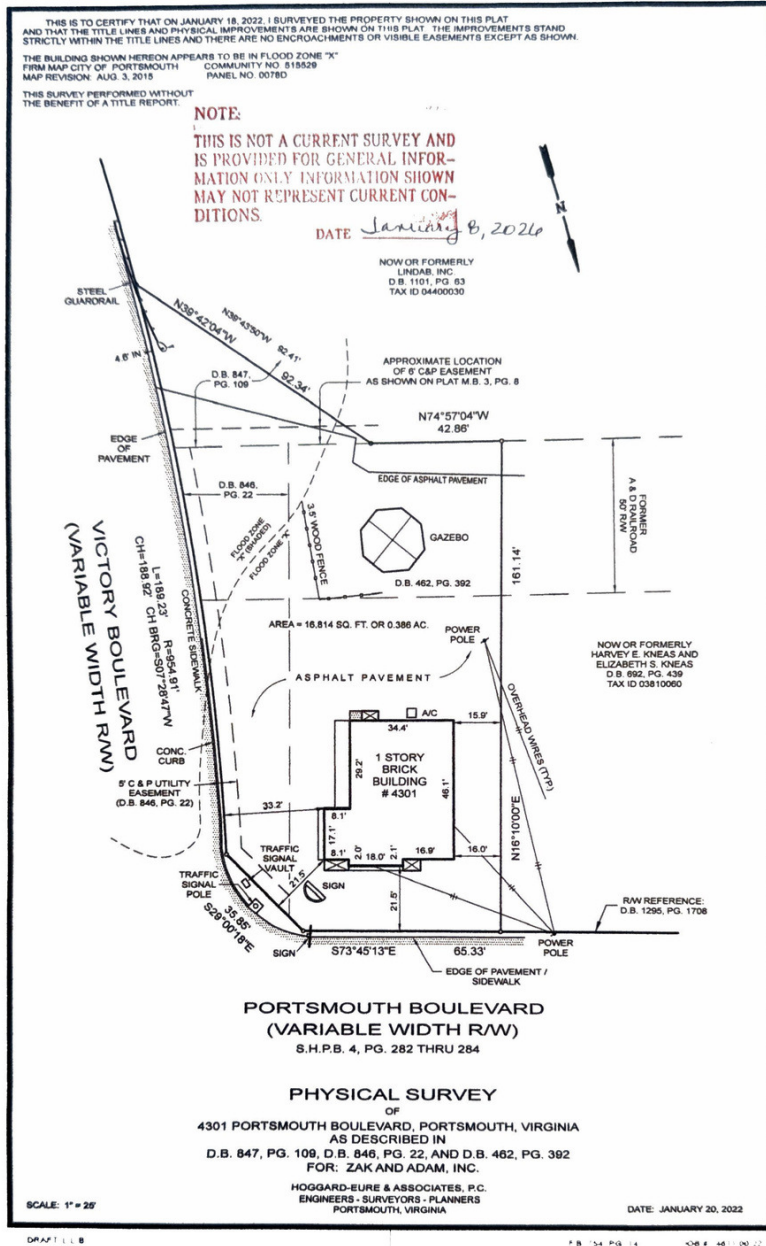


ADDITIONAL PHOTOS

RETAIL BUILDING AT PORTSMOUTH & VICTORY BOULEVARDS
4301 Portsmouth Blvd | Portsmouth, VA 23701



S.L. NUSBAUM
REALTY CO.

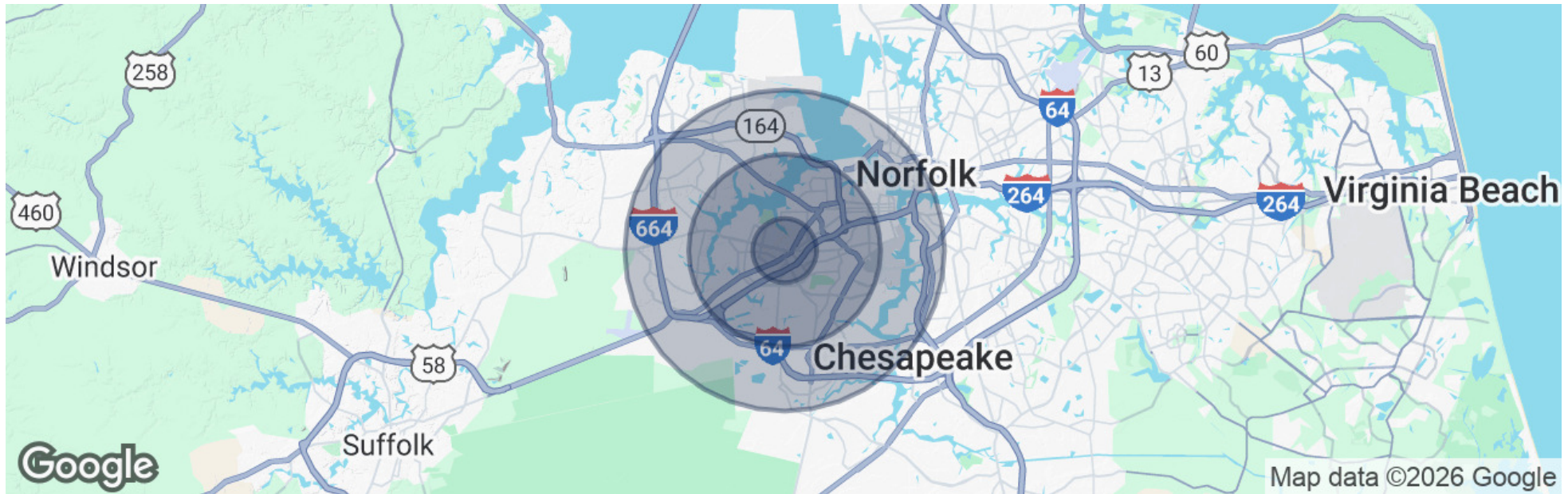


DEMOGRAPHICS MAP & REPORT

RETAIL BUILDING AT PORTSMOUTH & VICTORY BOULEVARDS
4301 Portsmouth Blvd | Portsmouth, VA 23701



S.L. NUSBAUM
REALTY CO.



POPULATION	1 MILE	3 MILES	5 MILES
Total Population	10,399	85,409	184,250
Average Age	39	40	39
Average Age (Male)	38	38	38
Average Age (Female)	40	41	40
HOUSEHOLDS & INCOME	1 MILE	3 MILES	5 MILES
Total Households	4,239	33,826	74,100
# Of Persons Per HH	2.5	2.5	2.5
Average HH Income	\$70,134	\$81,468	\$92,193
Average House Value	\$210,161	\$254,560	\$314,594

Demographics data derived from AlphaMap

CONTACT INFORMATION

RETAIL BUILDING AT PORTSMOUTH & VICTORY BOULEVARDS
4301 Portsmouth Blvd | Portsmouth, VA 23701



S.L. NUSBAUM
REALTY CO.

MICHAEL MYERS

Senior Vice President | Partner

C. 757.679.3273

O. 757.640.2273

mmyers@slnusbaum.com

COMMITMENT. INTEGRITY. EXCELLENCE. SINCE 1906.

Serving the Southeast and Mid-Atlantic region for well over a century, S.L. Nusbaum Realty Co. continues to provide a comprehensive experience for our clients and customers in all aspects of the multifamily and commercial real estate industry.

[CLICK HERE TO LEARN MORE](#)



DISCLAIMER:

No warranty or representation, expressed or implied, is made to the accuracy or completeness of the information contained herein, and same is submitted subject to errors, omissions, change of price, rental or other conditions, withdrawal without notice, and to any special listing conditions imposed by the property owner(s). As applicable, we make no representation as to the condition of the property (or properties) in question or the property's (or properties') compliance with applicable laws, regulations, and codes.