

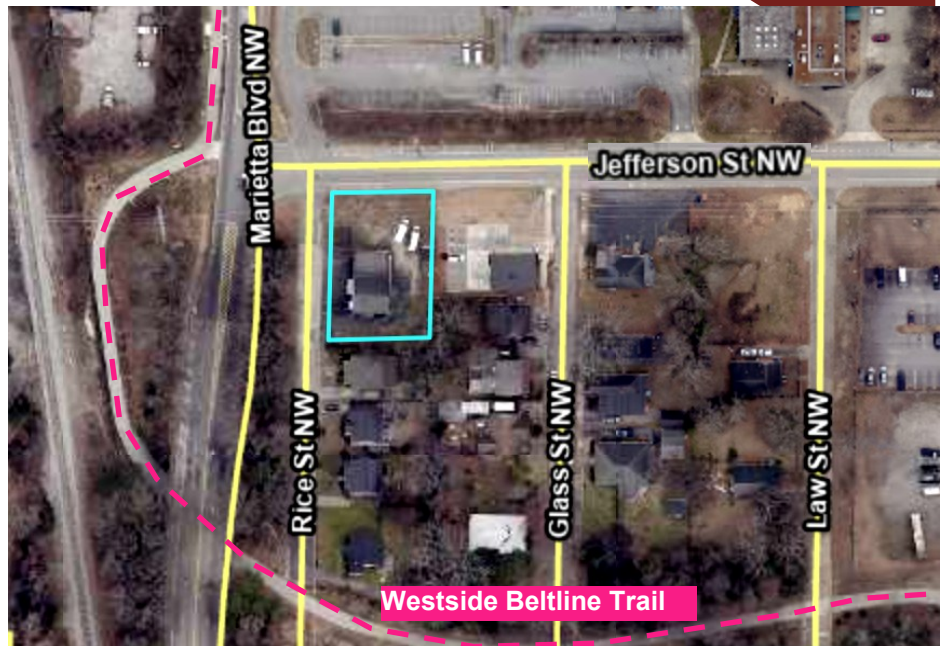
# FOR SALE | WEST MIDTOWN FREE STANDING BUILDING STEPS FROM THE BELTLINE - +/- 2,824 SF



751 Rice Street NW  
Atlanta, GA 30318

Price: \$750,000.00  
Size: +/-2,824 SF

- Steps from the Beltline
- Fully Fenced In (0.34 Acres)
- Located on the Southeast Corner of Rice St. and Jefferson St.
- 2 Garages (1 Oversized)
- Minutes from the New Shirley Franklen Park (F/K/A Bellwood Quarry)



Alan Joel

Dir: 404.869.2602

Cell: 404.210.1700

aj Joel@alanjoelpartners.com



For complete details, please visit: [www.alanjoelpartners.com](http://www.alanjoelpartners.com)

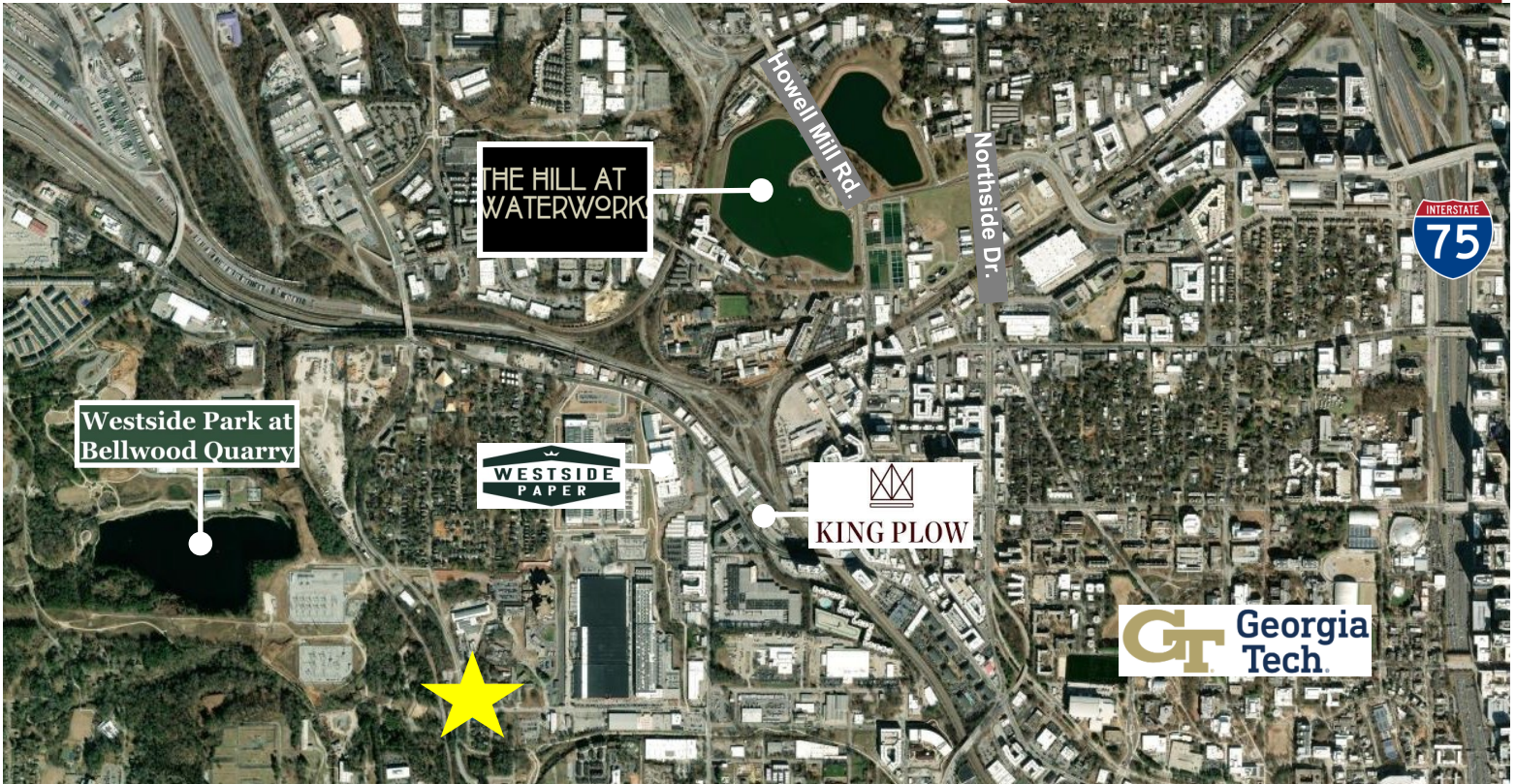
455 East Paces Ferry, Suite 312  
Atlanta, GA 30305

The information was obtained from sources we assume are reliable. We do not doubt its accuracy, however we do not guarantee it. No liability is assumed for errors and omissions. Information is subject to changes and withdrawal without notice.

# 751 Rice Street NW, Atlanta, GA 30318

## Property Summary

Westside Atlanta, a historically industrial corridor now pulsing with redevelopment, blends old neighborhood character with modern growth from Bankhead to Atlanta University Center and beyond. The Westside Beltline Trail, an essential stretch of the city's ambitious Beltline project, runs through this area, transforming former rail corridors into a multi-use path that links neighborhoods, parks, art spaces, and new housing with downtown and West End. Along the trail, you'll find a mix of revitalized lofts, trendy restaurants, and cultural venues, alongside pre-



Alan Joel

404.210.1700

aj Joel@alanjoelpartners.com

For complete details, please visit: [www.alanjoelpartners.com](http://www.alanjoelpartners.com)

**ALAN JOEL PARTNERS**

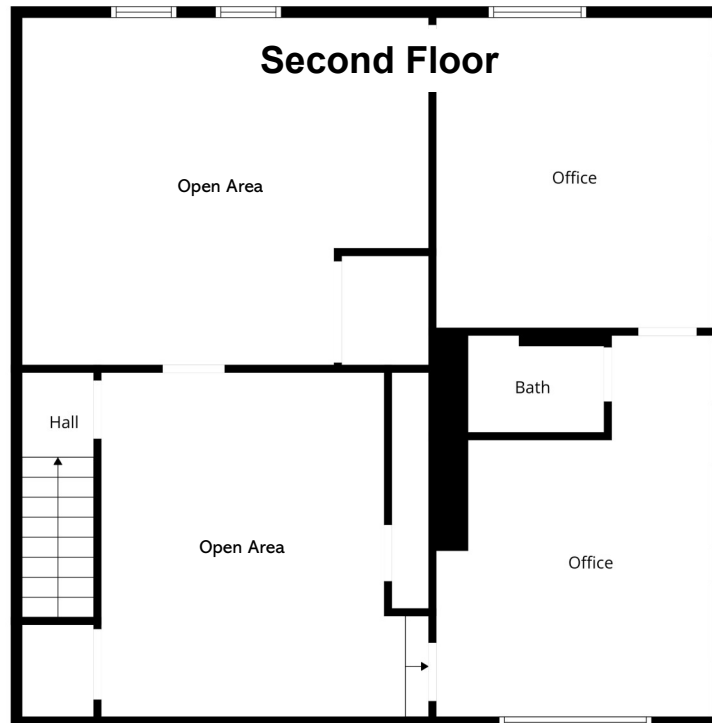
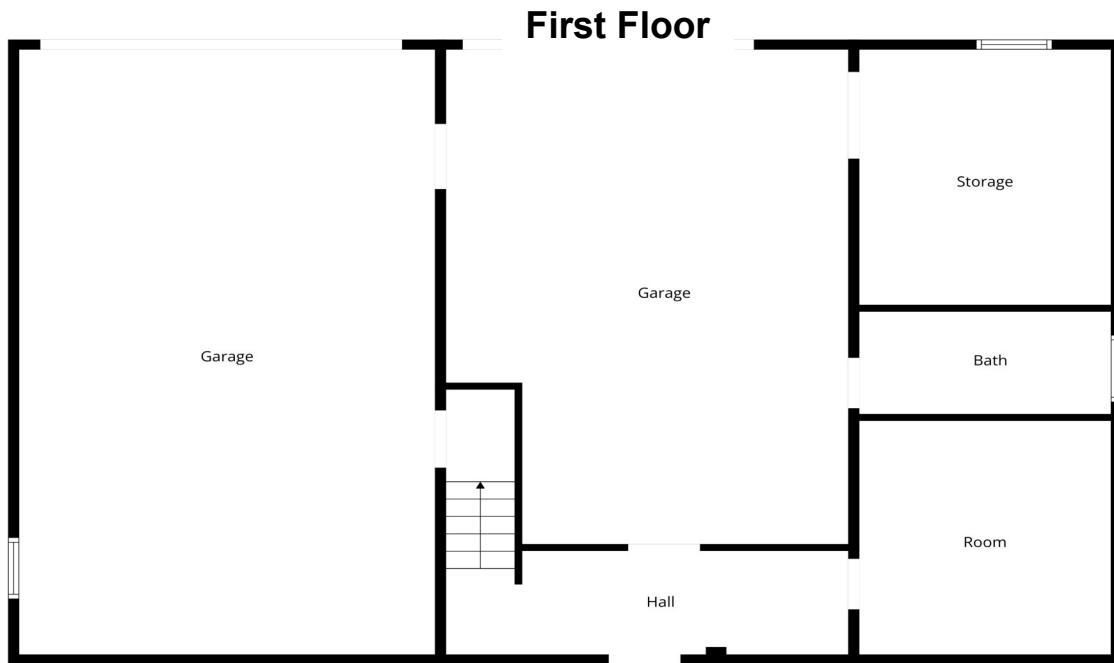
Commercial Real Estate Brokerage & Investment

455 East Paces Ferry, Suite 312  
Atlanta, GA 30305

The information was obtained from sources we assume are reliable. We do not doubt its accuracy, however we do not guarantee it. No liability is assumed for errors and omissions. Information is subject to changes and withdrawal without notice.

# Floor Plans

751 Rice Street NW, Atlanta, GA 30318



Alan Joel  
404.210.1700  
aj Joel@alanjoelpartners.com

For complete details, please visit: [www.alanjoelpartners.com](http://www.alanjoelpartners.com)



455 East Paces Ferry, Suite 312  
Atlanta, GA 30305

The information was obtained from sources we assume are reliable. We do not doubt its accuracy, however we do not guarantee it. No liability is assumed for errors and omissions. Information is subject to changes and withdrawal without notice.

# Photos

620 Glen Iris Drive NE, Unit 108, Atlanta, GA 30308



[Click here for More Photos](#)

Alan Joel

404.210.1700

[ajoe@alanjoelpartners.com](mailto:ajoe@alanjoelpartners.com)

For complete details, please visit: [www.alanjoelpartners.com](http://www.alanjoelpartners.com)

**ALAN JOEL PARTNERS**  
Commercial Real Estate Brokerage & Investment

455 East Paces Ferry, Suite 312  
Atlanta, GA 30305

The information was obtained from sources we assume are reliable. We do not doubt its accuracy, however we do not guarantee it. No liability is assumed for errors and omissions. Information is subject to changes and withdrawal without notice.