



15,000 SF AVAILABLE FOR LEASE

5.0 ACRES • FULLY PAVED / GRAVELED • 22'-24'6" CLEAR


STREAM


STONEMONT

7773 W Strickland St

DOUGLASVILLE, GA 30134



7773 W Strickland St

DOUGLASVILLE, GA 30134

■ AVAILABILITY HIGHLIGHTS

Address	7773 W Strickland St, Douglasville, GA 30134
Total Building SF	15,000 SF
Maintenance Facility SF	10,000 SF
Office SF	5,000 SF
Acres	5.0 AC (3.5 AC Paved; 1.5 AC Graveled)
Clear Height	Clear Span - 22' - 24' 6"
Drive Ins	5 Drive Through Bays (14' W x 18' H Doors)

Upcoming Capital Improvements

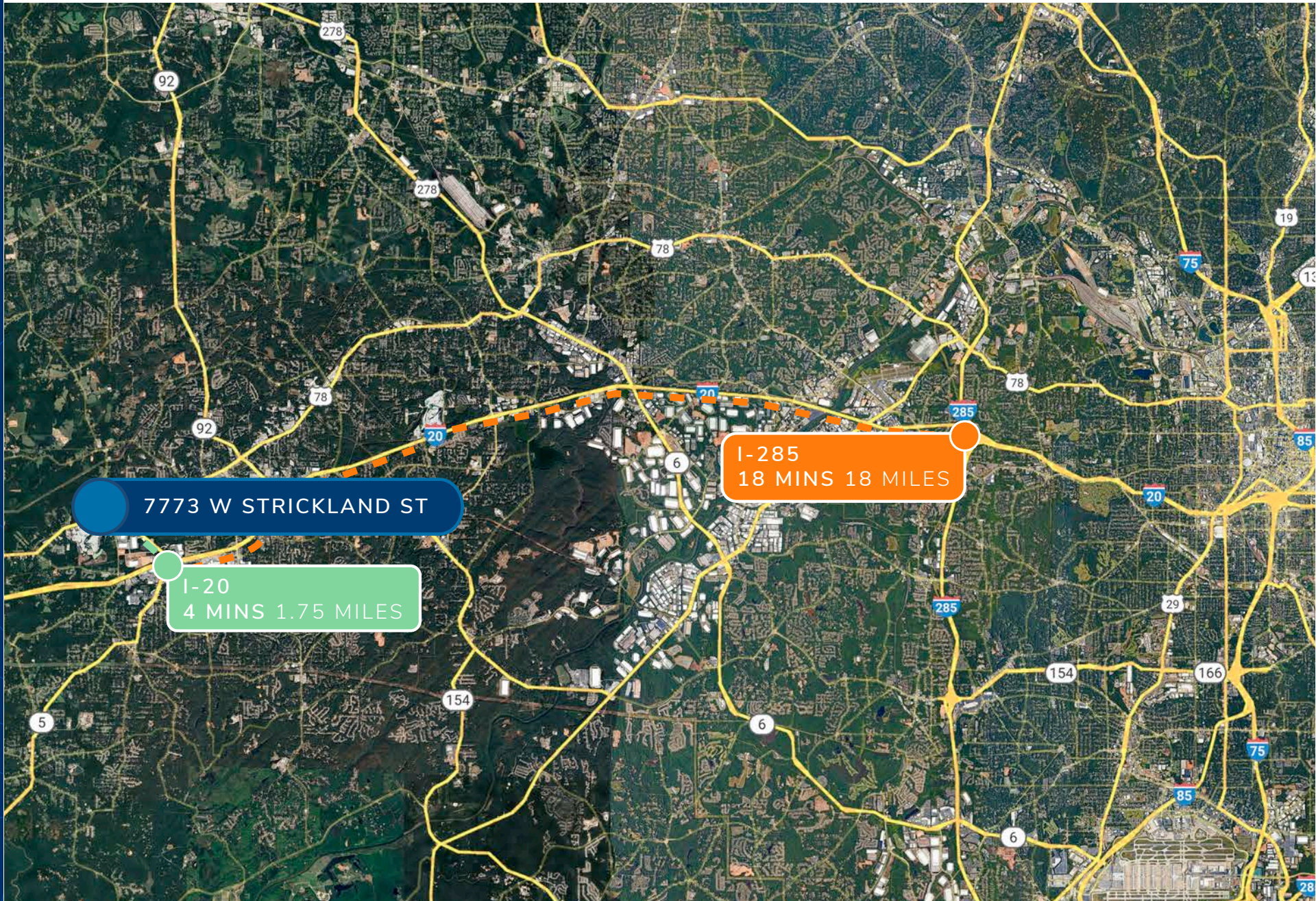
- Recently refreshed paving and gravel yard designed for heavy equipment, trailer, and fleet storage
- Updated interior and exterior building finishes
- Fully fenced and lit site providing secure 24/7 yard operations
- New high-efficiency LED lighting throughout the maintenance facility



7773 W Strickland St

DOUGLASVILLE, GA 30134

■ ACCESS MAP



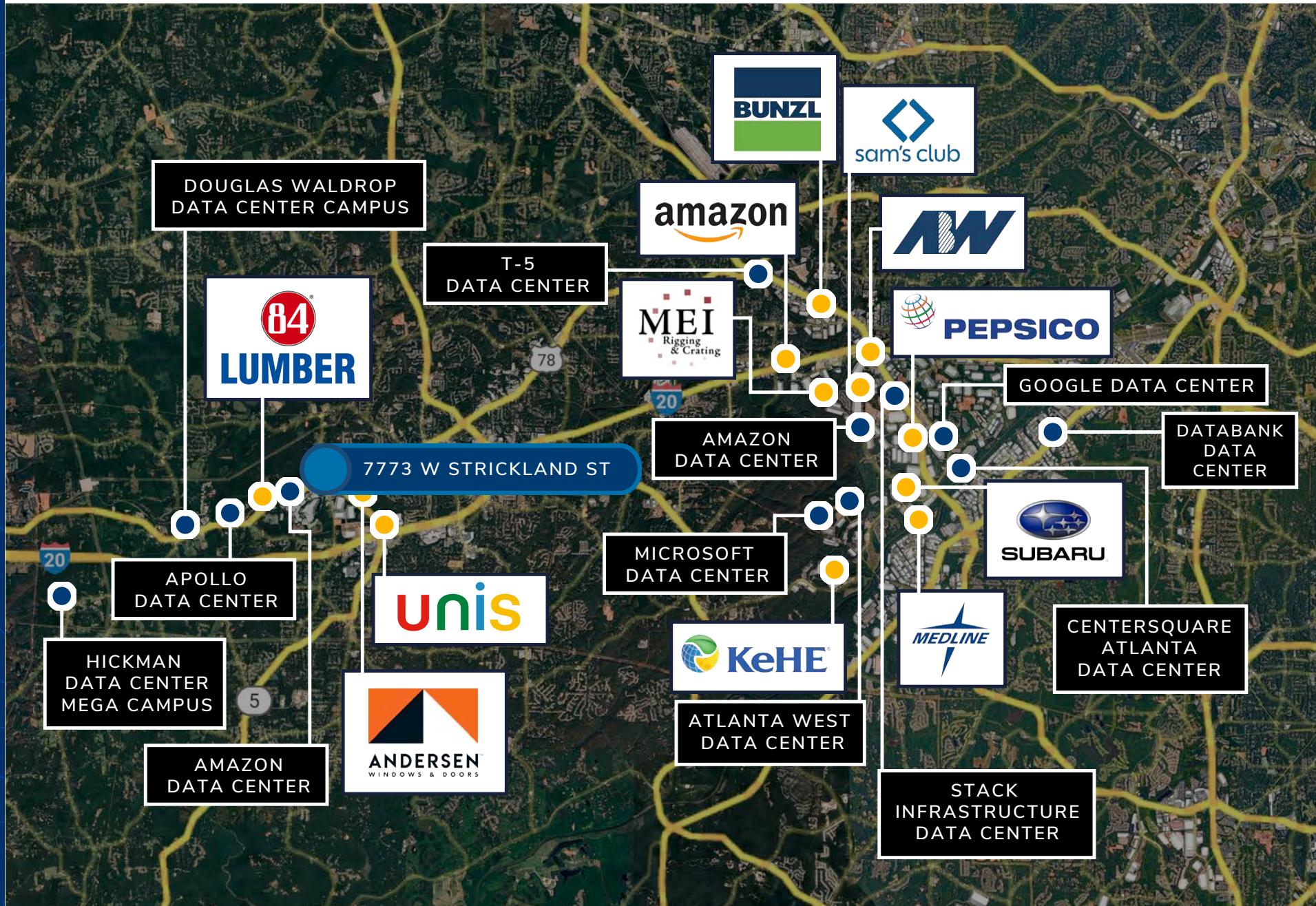


7773 W Strickland St

DOUGLASVILLE, GA 30134

■ ACTIVE DATA CENTER DEVELOPMENTS

■ CORPORATE NEIGHBORS





7773 W Strickland St

DOUGLASVILLE, GA 30134

■ PHOTO GALLERY





7773 W Strickland St

DOUGLASVILLE, GA 30134





BEAU ACUFF, SIOR

Executive Vice President

beau.acuff@streamrealty.com

404.962.8626

CHANDLER BRYANT

Associate

chandler.bryant@streamrealty.com

404.333.1097