

**OFFICE
LEASE**

65,617 RSF
TOTAL

CLASS B
OFFICE SPACE

RENOVATED
2019



TRANSWESTERN

REAL ESTATE
SERVICES

Northeast Executive Center

12015 E. 46th Ave, Denver CO 80239



Availability:

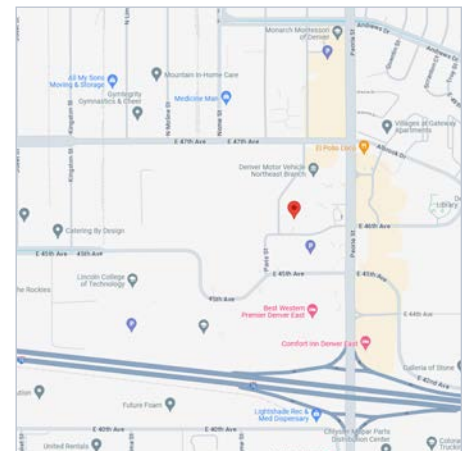
- **Suite 100:** 2,476 SF
- **Suite 200:** 5,626 SF
- **Suite 300:** 10,918 SF
- **Suite 500:** 8,031 SF

Space Features:

- **Lease Rate:** From \$18.00/RSF FSG
- **Expenses:** Base Year
- **Lease Term:** 3-5 Years
- **Parking:** Generous free parking at 4.46:1,000/RSF

Building Amenities:

- Renovated building with new exterior paint & landscaping
- 5 minutes to I-70 and I-225
- 10 minutes to the Peoria Station and the A Train
- 16 minutes to DIA & Downtown Denver
- Plenty of nearby restaurants, hotels and services
- Located in a Colorado Enterprise Zone



Leasing Information:

Karen Clarke
(720) 891-6000
karen.clarke@transwestern.com

The information provided herein was obtained from sources believed reliable; however, Transwestern makes no guarantees, warranties or representations as to the completeness or accuracy thereof. The presentation of this property is submitted subject to errors, omissions, change of price or conditions, prior sale or lease, or withdrawal without notice. Copyright © 2024 Transwestern.

Northeast Executive Center

12015 E. 46th Ave, Denver CO 80239



TRANSWESTERN

REAL ESTATE
SERVICES

Region



Leasing Information:

Karen Clarke

(720) 891-6000

karen.clarke@transwestern.com

The information provided herein was obtained from sources believed reliable; however, Transwestern makes no guarantees, warranties or representations as to the completeness or accuracy thereof. The presentation of this property is submitted subject to errors, omissions, change of price or conditions, prior sale or lease, or withdrawal without notice. Copyright © 2024 Transwestern.

Northeast Executive Center

12015 E. 46th Ave, Denver CO 80239



TRANSWESTERN

REAL ESTATE
SERVICES

Amenities



Leasing Information:

Karen Clarke

(720) 891-6000

karen.clarke@transwestern.com

The information provided herein was obtained from sources believed reliable; however, Transwestern makes no guarantees, warranties or representations as to the completeness or accuracy thereof. The presentation of this property is submitted subject to errors, omissions, change of price or conditions, prior sale or lease, or withdrawal without notice. Copyright © 2024 Transwestern.



Leasing Information:

Karen Clarke

(720) 891-6000

karen.clarke@transwestern.com

The information provided herein was obtained from sources believed reliable; however, Transwestern makes no guarantees, warranties or representations as to the completeness or accuracy thereof. The presentation of this property is submitted subject to errors, omissions, change of price or conditions, prior sale or lease, or withdrawal without notice. Copyright © 2024 Transwestern.

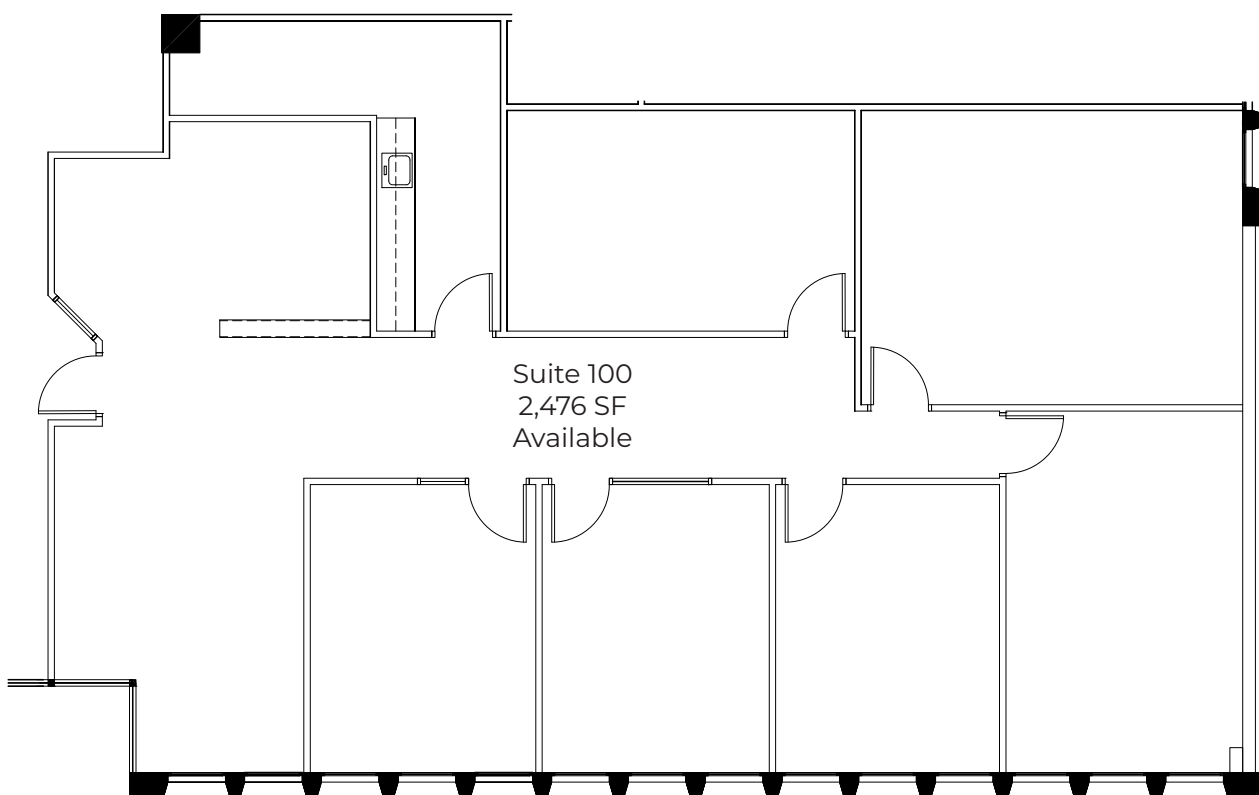
Northeast Executive Center

12015 E. 46th Ave, Denver CO 80239



Floor Plan:

Suite 100 | 2,476 SF



Leasing Information:

Karen Clarke
(720) 891-6000
karen.clarke@transwestern.com

The information provided herein was obtained from sources believed reliable; however, Transwestern makes no guarantees, warranties or representations as to the completeness or accuracy thereof. The presentation of this property is submitted subject to errors, omissions, change of price or conditions, prior sale or lease, or withdrawal without notice. Copyright © 2024 Transwestern.

Northeast Executive Center

12015 E. 46th Ave, Denver CO 80239

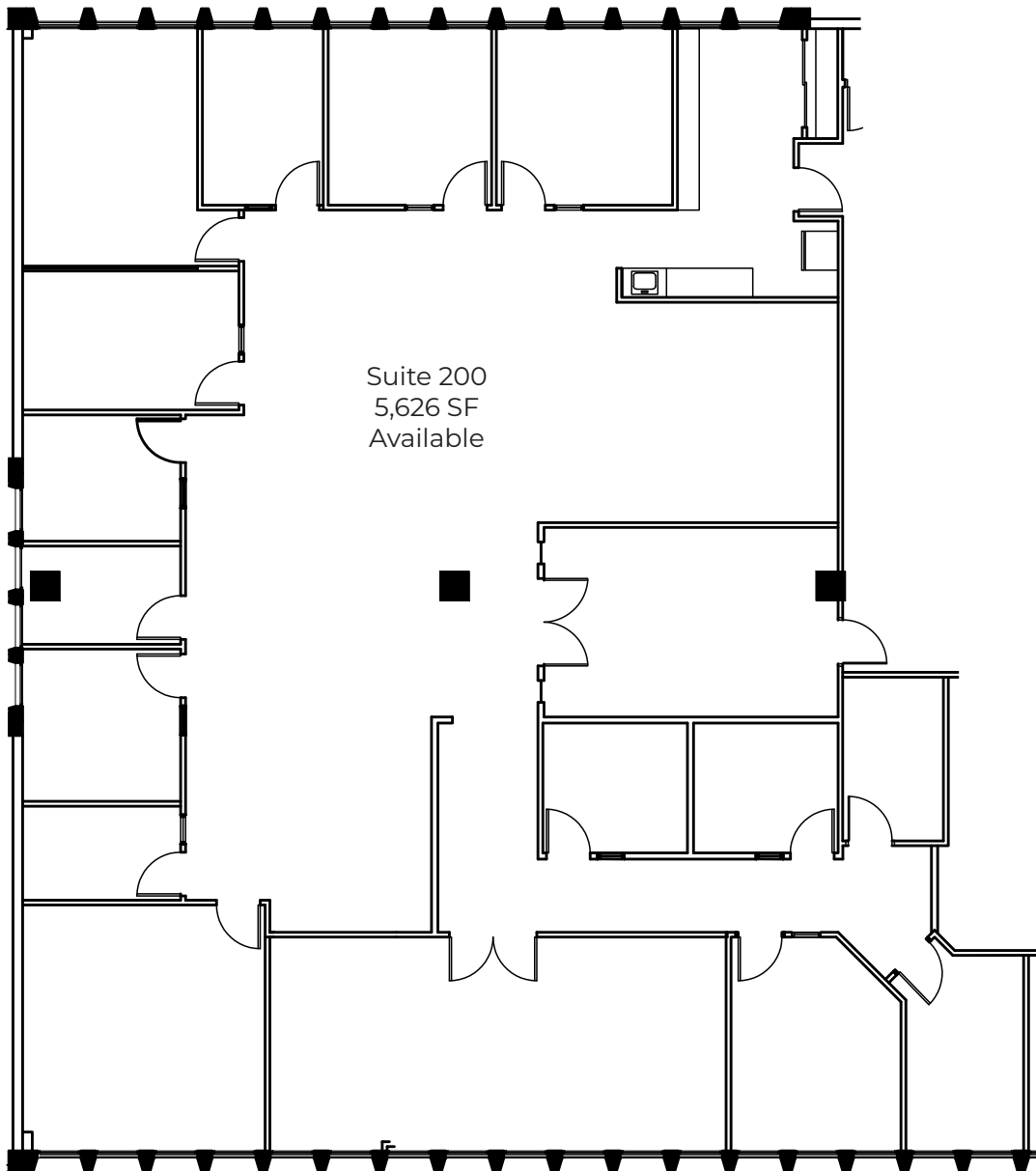


TRANSWESTERN

REAL ESTATE
SERVICES

Floor Plan:

Suite 200 | 5,626 SF



Leasing Information:

Karen Clarke

(720) 891-6000

karen.clarke@transwestern.com

The information provided herein was obtained from sources believed reliable; however, Transwestern makes no guarantees, warranties or representations as to the completeness or accuracy thereof. The presentation of this property is submitted subject to errors, omissions, change of price or conditions, prior sale or lease, or withdrawal without notice. Copyright © 2024 Transwestern.

Northeast Executive Center

12015 E. 46th Ave, Denver CO 80239



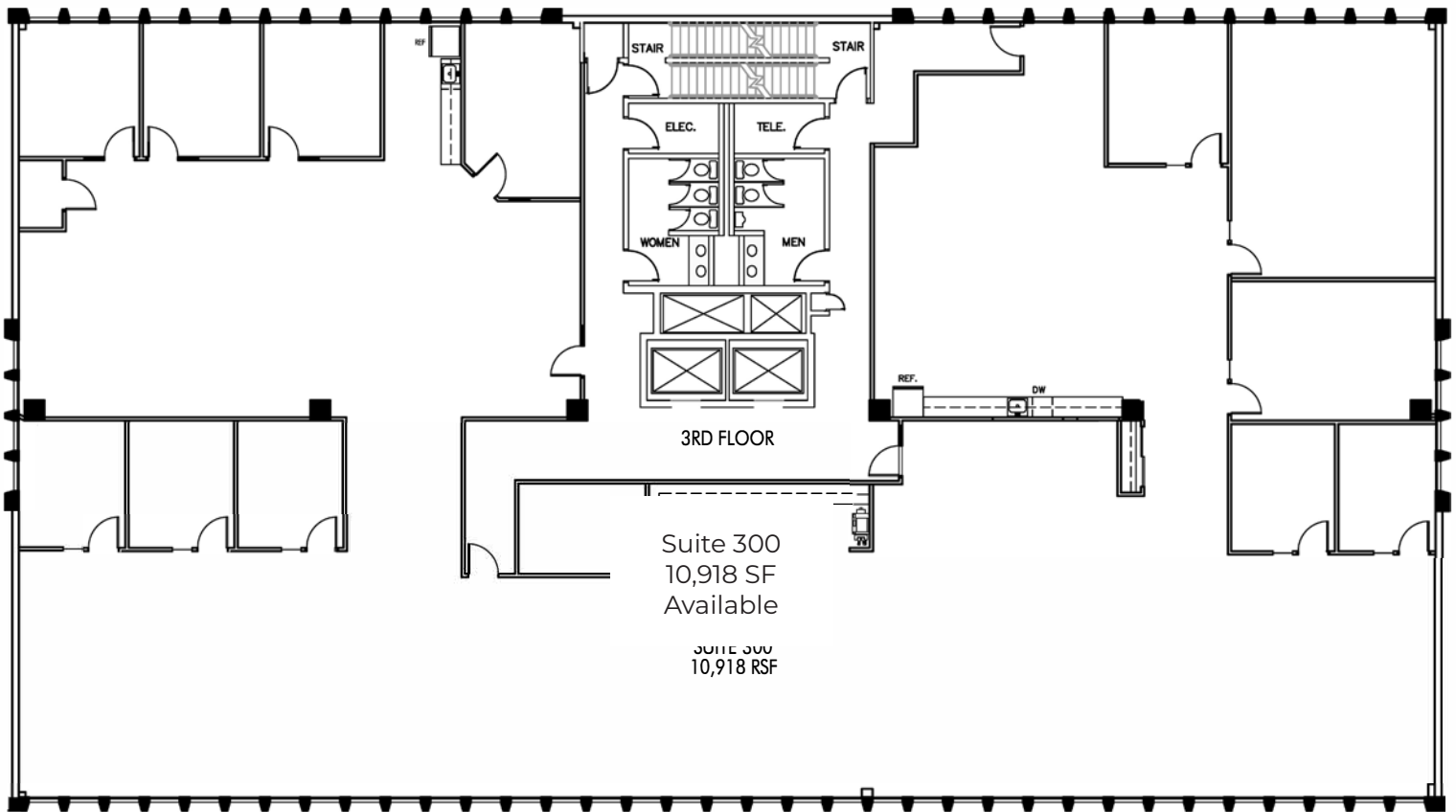
TRANSWESTERN

REAL ESTATE
SERVICES

Floor Plan:

Suite 300 | 10,918 SF

360° Matterport
Virtual Tour



Leasing Information:

Karen Clarke

(720) 891-6000

karen.clarke@transwestern.com

The information provided herein was obtained from sources believed reliable; however, Transwestern makes no guarantees, warranties or representations as to the completeness or accuracy thereof. The presentation of this property is submitted subject to errors, omissions, change of price or conditions, prior sale or lease, or withdrawal without notice. Copyright © 2024 Transwestern.

Northeast Executive Center

12015 E. 46th Ave, Denver CO 80239



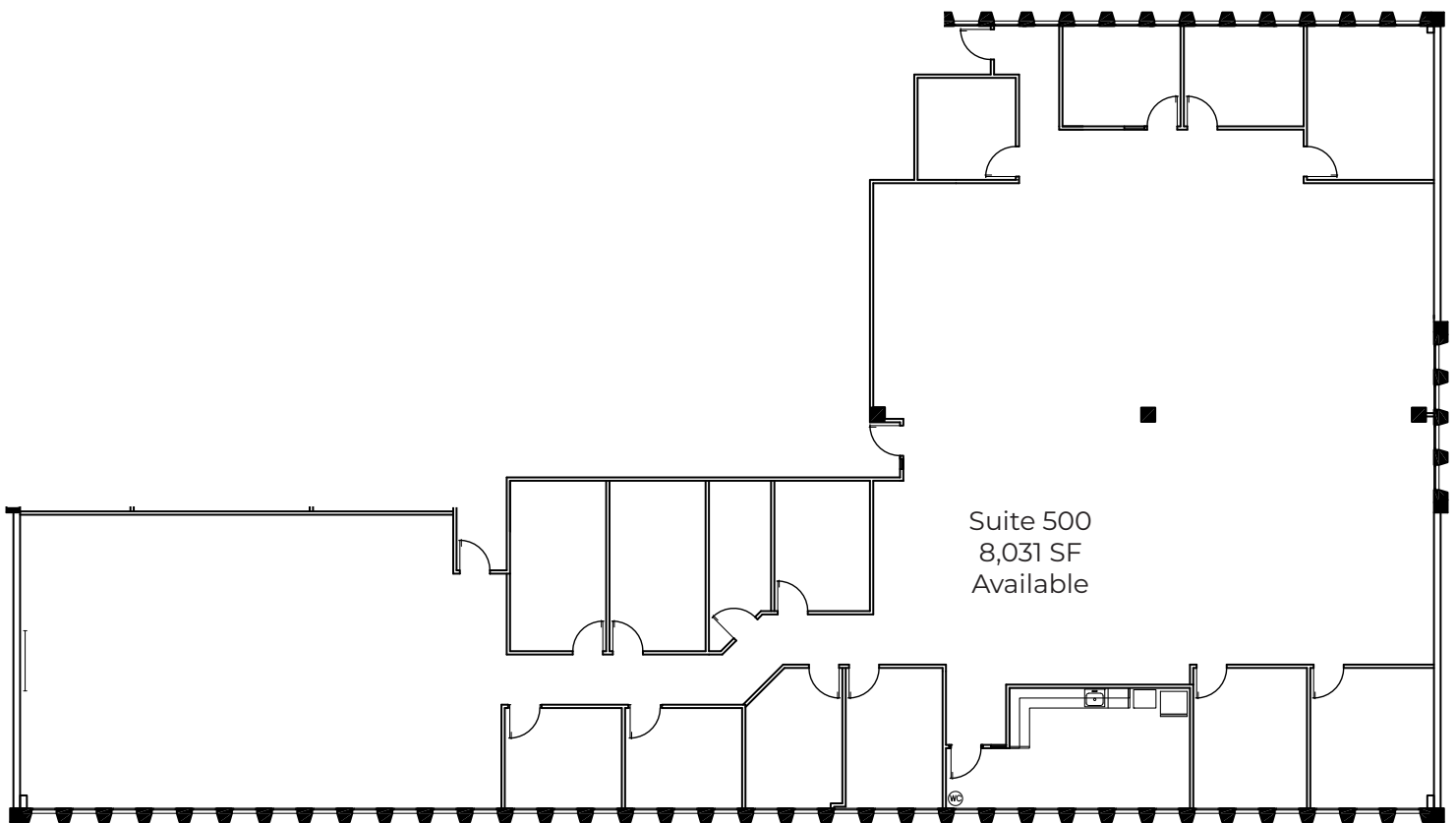
TRANSWESTERN

REAL ESTATE
SERVICES

Floor Plan:

Suite 500 | 8,031 SF

360° Matterport
Virtual Tour



Leasing Information:

Karen Clarke

(720) 891-6000

karen.clarke@transwestern.com

The information provided herein was obtained from sources believed reliable; however, Transwestern makes no guarantees, warranties or representations as to the completeness or accuracy thereof. The presentation of this property is submitted subject to errors, omissions, change of price or conditions, prior sale or lease, or withdrawal without notice. Copyright © 2024 Transwestern.