

**220  
FRONT STREET**

(between Peck Slip and Beekman St.)

Boutique Retail  
Space for Lease



# THE NEIGHBORHOOD



## SOUTH STREET SEAPORT



**27,715,365**  
Annual riders at Fulton Street Station



**1,051,748**  
Annual ferry passengers at Wall Street terminal



**22 HOTELS / 3,470 ROOMS**  
within a 5min walk



**938 RESIDENTIAL UNITS**     **230,000 SF**  
under construction     of new office space under  
in seaport district     construction in seaport district



**2,991**  
Seaport district residents with an average HHI of \$205,86.  
(Seaport District defined as eight blocks bound by Dover Street & Peck Slip (N), Pearl and Front streets (W), John Street (S), and East River (E).)



**MAJOR SEAPORT OFFICE TENANTS:**  
Nike, ESPN, Stripe, UNICEF, Health & Home Care, Allied World Alliance, The Legal Aid Society



**14 Million**  
Tourists expected to visit Lower Manhattan in 2023



**56 Summer Concerts**  
at Pier 17 with 3,500 concert-goers each

# THE NEIGHBORHOOD



**220**  
**FRONT STREET**  
**FACTS & FIGURES**

**TOTAL AREA**

800 sf

**CEILING HEIGHT**

16'

**FRONT STREET  
FRONTAGE**

25'

**POSSESSION**

Immediate

**SPACE HIGHLIGHTS**

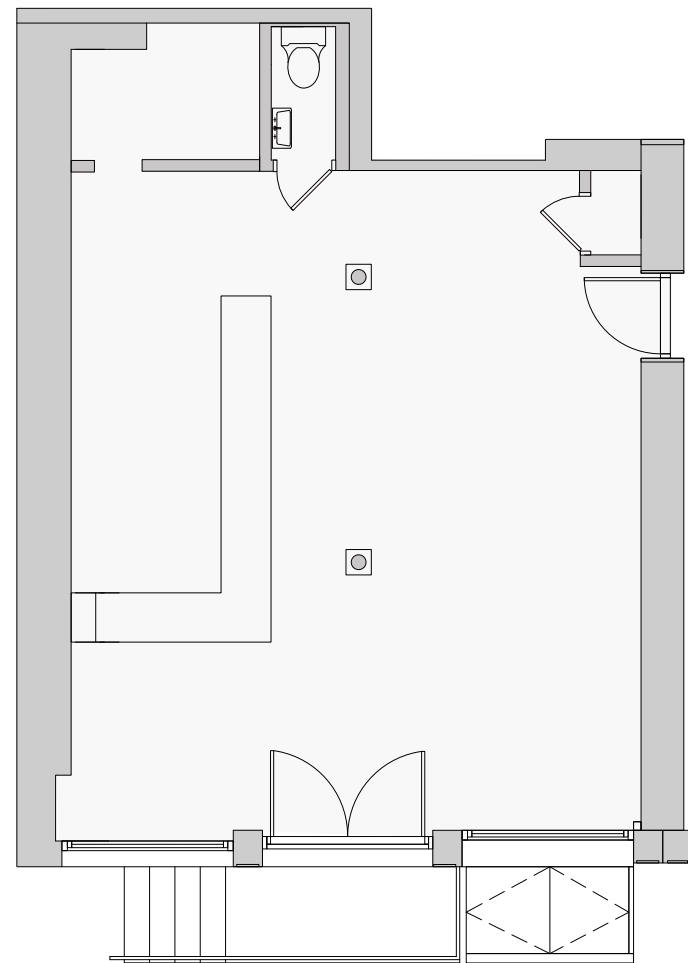
Turnkey winebar installation

Alternate dry good uses considered

All glass storefront

Four steps above grade

Interior accentuated with  
historical detailing and materials



Front Street



## DRINK IT IN

Soaring ceilings and historical detailing characterize this winebar-come-creative space. It's flexible open plan, glass storefront, and L-shape bar make it a unique opportunity.



Exposed brick and  
wide plank floors...

...are showcased  
through a classic  
divided light storefront.





**HISTORIC  
FRONT STREET  
RETAIL LEASING CONTACTS**



**BRAD SCHWARZ**

BSchwarz@lee-associates.com  
212.776.1290

**JP SUTRO**

JSutro@lee-associates.com  
212.776.1274

**OLIVIA HWANG**

OHwang@lee-associates.com  
212.776.1238



**KAREN ROSE**

KRose@durst.org  
212.667.8705

