

INDUSTRIAL FLEX



Downtown Topeka Industrial / Flex Facility 112,000 SF

Versatile Space for:

Manufacturing • Corporate HQ • Tech / R&D • Flex • Community Services

616 SE Jefferson Street, Topeka, KS 66607

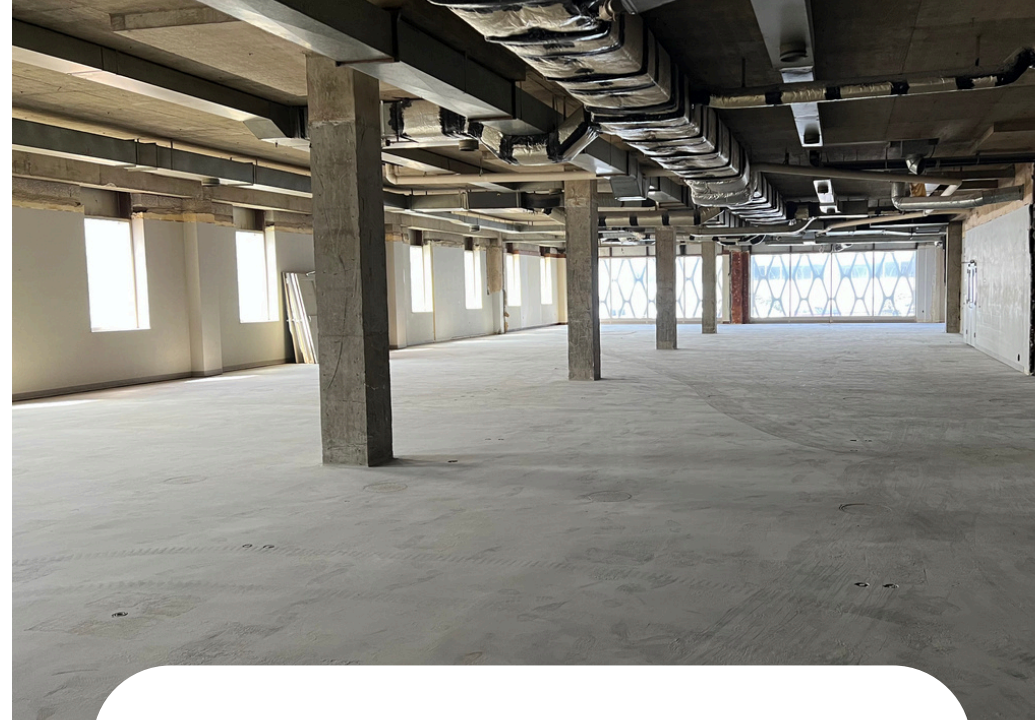
Todd Konkel 785 250 4595 konkeltodd@gmail.com

Property Overview

- 112,000 SF across three floors
- 12'–25' ceiling heights
- (2) Dock-high bays with dock levelers + (2) Drive-in overhead doors (expandable)
- Freight and passenger elevators
- Solid masonry and concrete construction
- Wall-to-ceiling windows bringing abundant natural light
- Flexible layout for industrial, tech, office, or community services
- Zoned Industrial | 3.3-acre downtown Topeka site



23' Ceiling Warehouse with Loading Docks



Executive Office Space with Natural Light

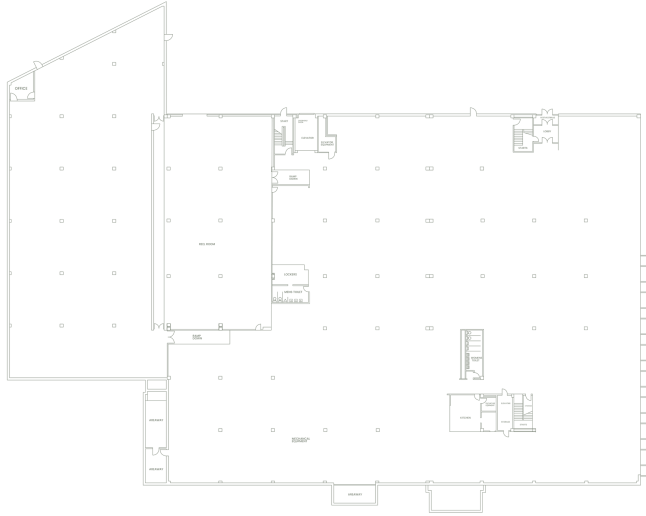
Adaptable Layout with Multi-Use Potential

This downtown Topeka property offers 112,000 square feet of adaptable space designed to accommodate a wide range of operational needs. Whether you're a manufacturer, logistics provider, R&D team, corporate office, or mission-driven organization, the building delivers the infrastructure and flexibility to support your growth. With open floor plans, dock and drive-in access, and natural light throughout, it's built for scale, innovation, and impact.

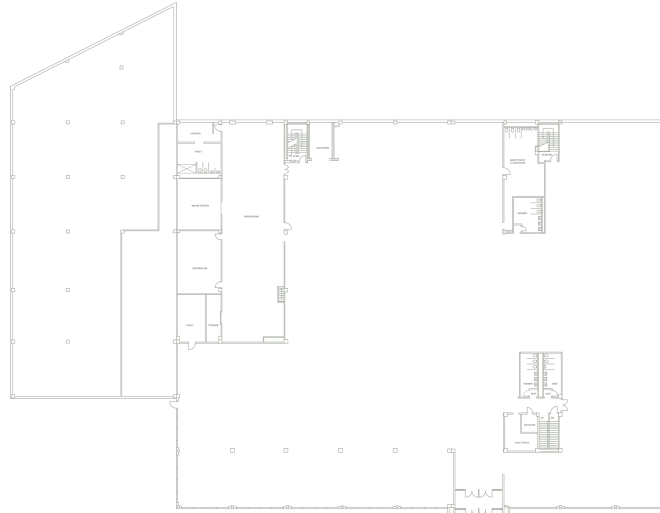
Floor Plans

Three distinct levels support industrial, office, and hybrid operations:

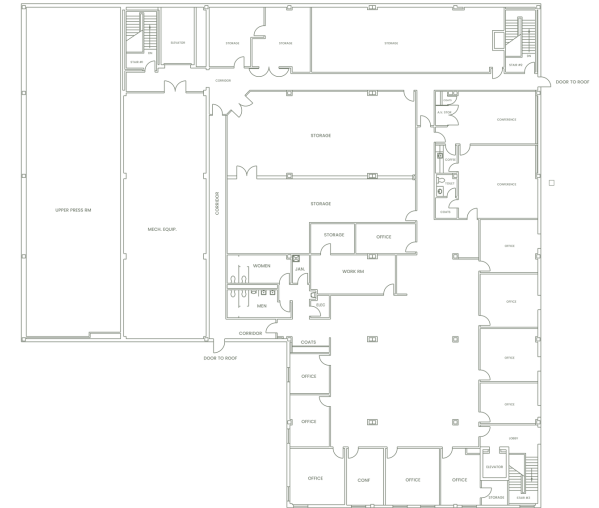
• 54,000 SF Warehouse • 40,000 SF Main Floor • 18,000 SF Executive Office



Ground Floor Plan
54,000 SF Warehouse



First Floor Plan
40,000 SF Open Layout



Second Floor Plan
18,000 SF Executive Office



Interested in Leasing This Downtown Topeka Facility?
Todd Konkelt 785 250 4595 konkeltodd@gmail.com
to schedule a tour or request full leasing details.