

1475 67th St. A & B

FOR LEASE

RENOVATED INDUSTRIAL/R&D

PROPERTY HIGHLIGHTS

- Newly renovated including seismic
- Fully sprinklered
- New Skylights & clarestory
- LED lighting
- Two ADA restrooms for each
- New storefront entry/windows
- Rear egress

- A:
- 200amp/3 phase
 - 11'-10" Clear height
 - 17'-7" to roof pitch
 - 10'8"h x 11'9"w Level-in roll-up

- B:
- 400amp/3 phase
 - 13'9" Clear height
 - 20' to roof deck
 - 13'10"h x 12'w Level-in Roll-up

LOCATION

1475 67th St., A & B,
Emeryville

OFFERED AT

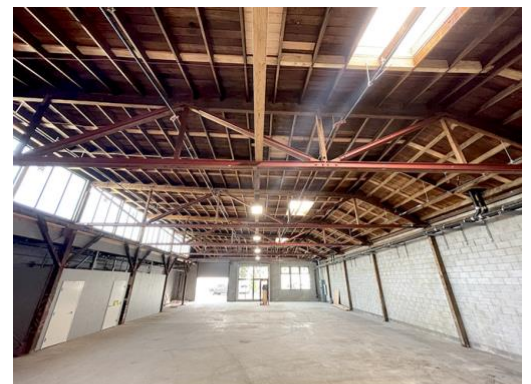
\$1.95 IG

SIZE

A: ±6,300 sq. ft.

B: ±8,950 sq. ft.

Combined: ±15,250



**NORHEIM
& YOST**

732 Addison Street
Suite "C"
Berkeley, CA 94710

John Norheim
BRE # 00770171
jn@noryost.com
510-527-3400 x10

Steve Smith
BRE# 01330154
ss@noryost.com
510-527-3400 x12

All information furnished herein was provided by sources deemed reliable, but no representation is made or implied as to the accuracy thereof.