

19170 – 19200 EUREKA ROAD
SOUTHGATE, MICHIGAN



**SIGNATURE
ASSOCIATES**
KNOW SIGNATURE | KNOW RESULTS

RETAIL FOR LEASE
3,500 Square Feet Available



PROPERTY FEATURES

- 3,500 square feet available
- Endcap unit perfect for many retail, restaurant, medical, or office uses
- Excellent signage and visibility
- Located on well-traveled Eureka Road
- 12' ceiling height
- Zoned C-2
- Lease Rate: \$12.00/sq. ft. NNN



For more information, please contact:

JUSTIN GAFFREY
(248) 799 3143
jgaffrey@signatureassociates.com

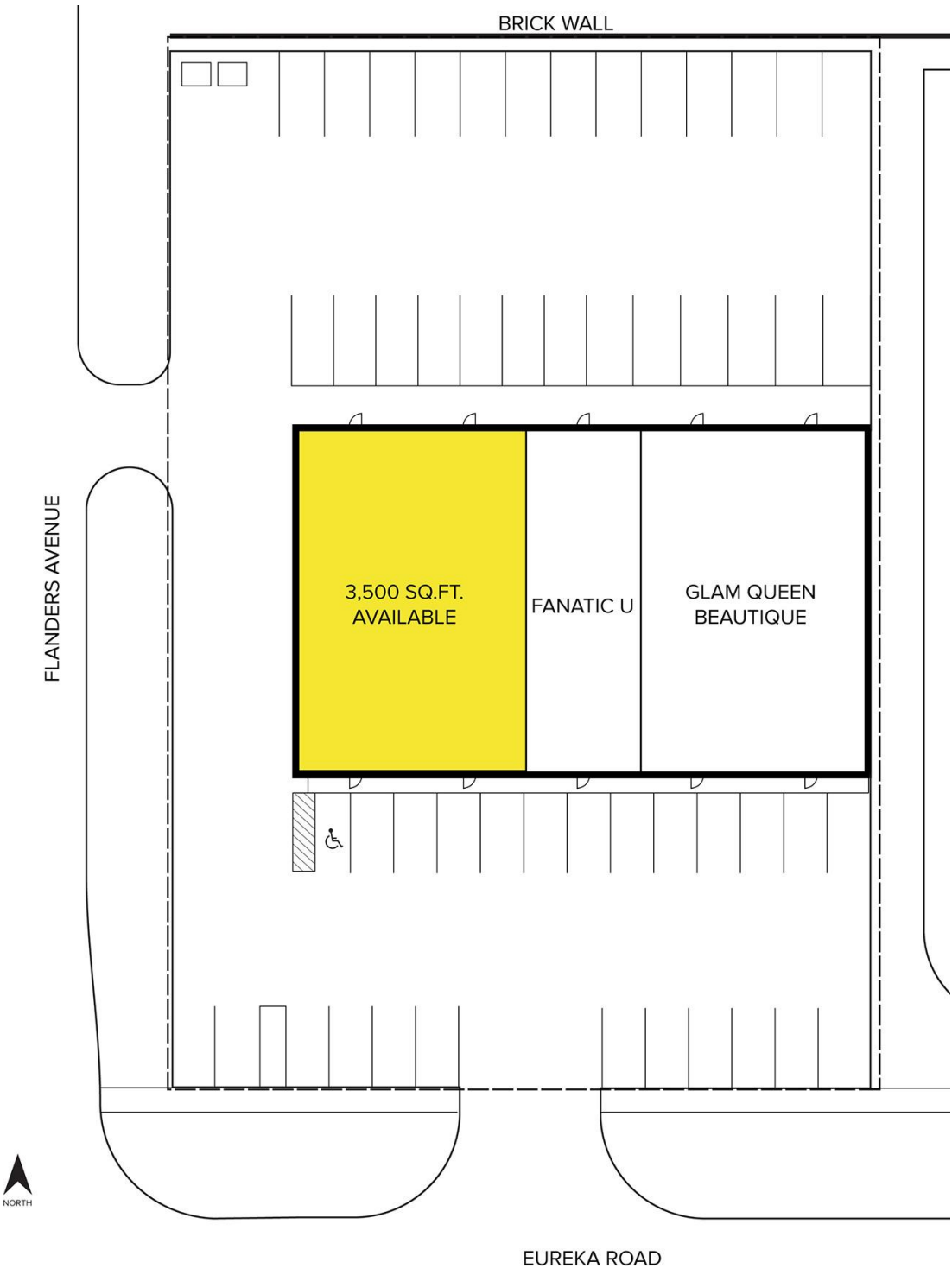
SIGNATURE ASSOCIATES
One Towne Square, Suite 1200
Southfield, MI 48076
www.signatureassociates.com

19170 – 19200 Eureka Road – Southgate, Michigan

Retail For Lease

3,500
Square Feet
AVAILABLE

Site Plan



For more information, please contact:

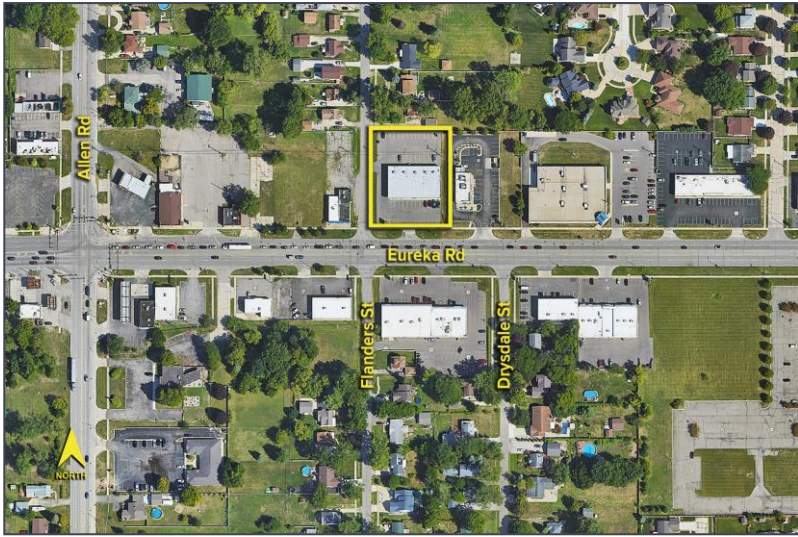
JUSTIN GAFFREY
(248) 799 3143
jgaffrey@signatureassociates.com

SIGNATURE ASSOCIATES
One Towne Square, Suite 1200
Southfield, MI 48076
www.signatureassociates.com

19170 – 19200 Eureka Road – Southgate, Michigan

Retail For Lease

3,500
Square Feet
AVAILABLE



DEMOGRAPHICS

	POPULATION	MED. HH INCOME
1 MILE	6,520	\$66,297
3 MILE	84,046	\$67,242
5 MILE	222,788	\$68,057

TRAFFIC COUNTS (TWO-WAY)

34,501	Eureka Rd. E of Dix Toledo Rd.
34,343	Eureka Rd. W of Dix Toledo Rd.
28,340	Dix Toledo Rd. N of Eureka Rd.
24,278	Dix Toledo Rd. S of Eureka Rd.



For more information, please contact:
JUSTIN GAFFREY
 (248) 799 3143
 jgaffrey@signatureassociates.com

SIGNATURE ASSOCIATES
 One Towne Square, Suite 1200
 Southfield, MI 48076
 www.signatureassociates.com

Information is subject to verification and no liability for errors or omissions is assumed. Price is subject to change and listing withdrawal.