



# SOUTH PARK GROUP

[www.southparkgroup.com](http://www.southparkgroup.com)



## FOR LEASE

### CREATIVE OFFICE

8201 Beverly Boulevard, Suite 302  
Los Angeles, California 90048

High end creative office building in the heart of the Beverly Grove area. Exposed ceilings with concrete floors. Centrally located on Beverly Boulevard between La Cienega and Crescent Heights.

#### AVAILABLE SPACE

**Size:** Approximately 3,040 rentable sqft

**Rate:** \$3.95 per sqft, Modified Gross

**Parking:** Available onsite.

#### DAVID RAVANSHENAS

Tel. 323.782.1205

E. [david@southparkgroup.com](mailto:david@southparkgroup.com)

No. 01869082

#### JACK RAVAN

Tel. 323.782.1270

E. [jackravan@southparkgroup.com](mailto:jackravan@southparkgroup.com)

No. 00890189

SOUTH PARK GROUP | 8322 Beverly Blvd., Suite 301 | Los Angeles, CA 90048

This information has been furnished by sources that we deem reliable, but for which we assume no liability. The information contained herein is given, in confidence, with the understanding that all negotiations pertaining to this property be handled through the submitting office. All measurements are approximate.

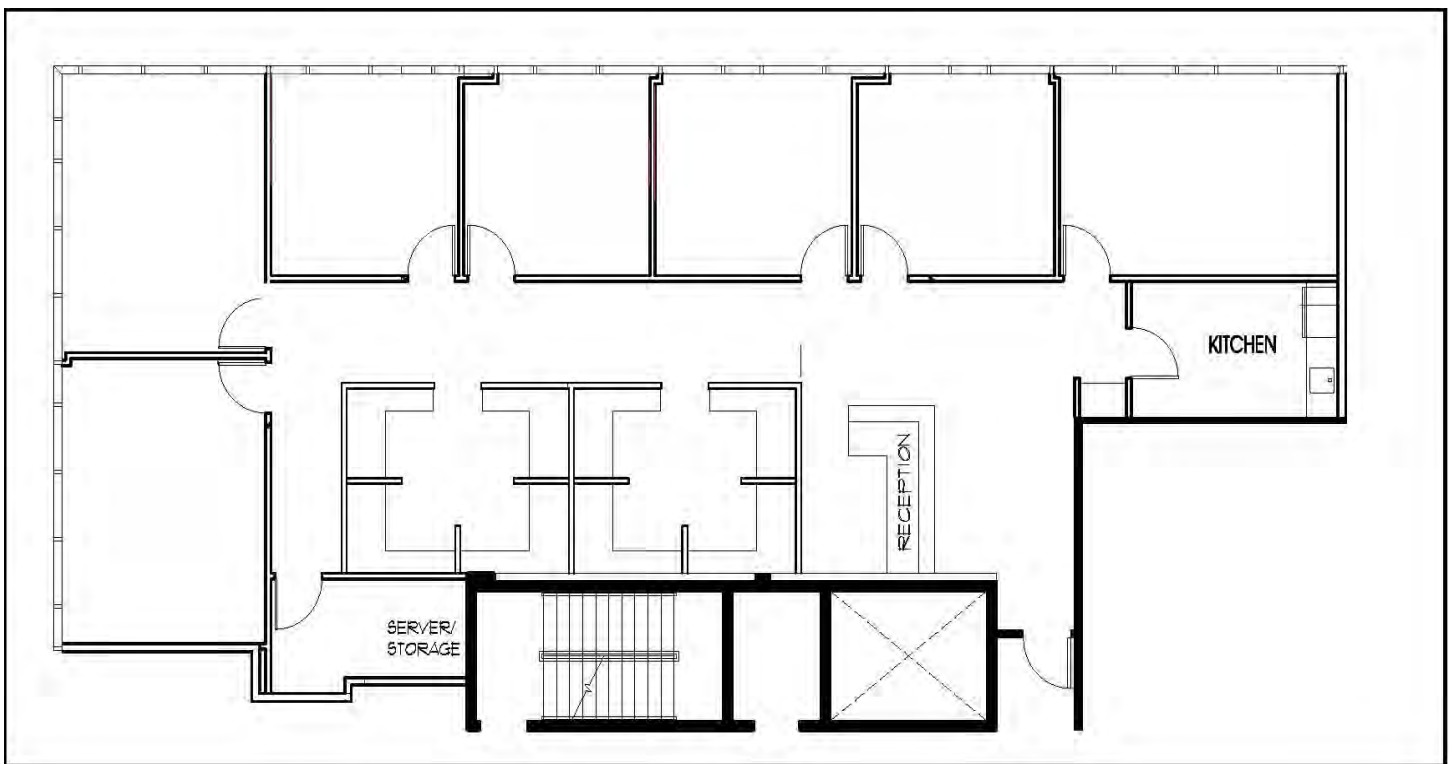


# SOUTH PARK GROUP

[www.southparkgroup.com](http://www.southparkgroup.com)

## FLOOR PLAN

8201 Beverly Blvd., Suite 302, Los Angeles, California 90048



**SOUTH PARK GROUP | 8322 Beverly Blvd., Suite 301 | Los Angeles, CA 90048**

This information has been furnished by sources that we deem reliable, but for which we assume no liability. The information contained herein is given, in confidence, with the understanding that all negotiations pertaining to this property be handled through the submitting office. All measurements are approximate.



# SOUTH PARK GROUP

[www.southparkgroup.com](http://www.southparkgroup.com)

## INTERIOR

8201 Beverly Blvd., Suite 302, Los Angeles, California 90048



**SOUTH PARK GROUP | 8322 Beverly Blvd., Suite 301 | Los Angeles, CA 90048**

This information has been furnished by sources that we deem reliable, but for which we assume no liability. The information contained herein is given, in confidence, with the understanding that all negotiations pertaining to this property be handled through the submitting office. All measurements are approximate.