

Office | For Lease

CBRE

1800 Eller Drive

1800 Eller Drive
Fort Lauderdale, FL 33316
www.cbre.com/EllerDrive

Convenient East Fort Lauderdale Location





Remarkable location at Port Everglades

100,000-square-foot, 6-story office tower positioned between Port Everglades and the Ft. Lauderdale-Hollywood International Airport. Enjoy nearby retail and dining options and onsite amenities including: Loca Mocha café serving breakfast and lunch, abundant parking, full-time professional building team and an after-hours card access system. I-595 provides direct, easy access to a variety of places, including a 5-minute drive to I-95.

Availability

Suite #	Size
Suite 402	3,540 SF
Suite 501	8,280 SF

1800 Eller Drive

1800 Eller Drive | Fort Lauderdale, FL 33316

For Lease

Property Profile

TOTAL BUILDING SIZE: 99,982 SF

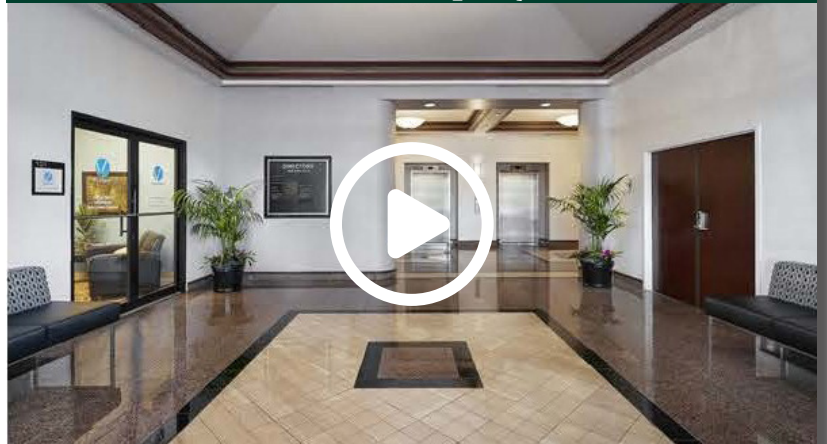
YEAR BUILT: 1983

RENOVATED: 2007

RENTAL RATE: \$32.00/SF | Full Service Gross

PARKING: 4.80/1,000 ratio

[Click to View Property Video](#)



Building Highlights



Excellent location East of I-595 and Port Everglades



Direct access to Fort Lauderdale/ Hollywood International Airport



Mins to all other major roadways



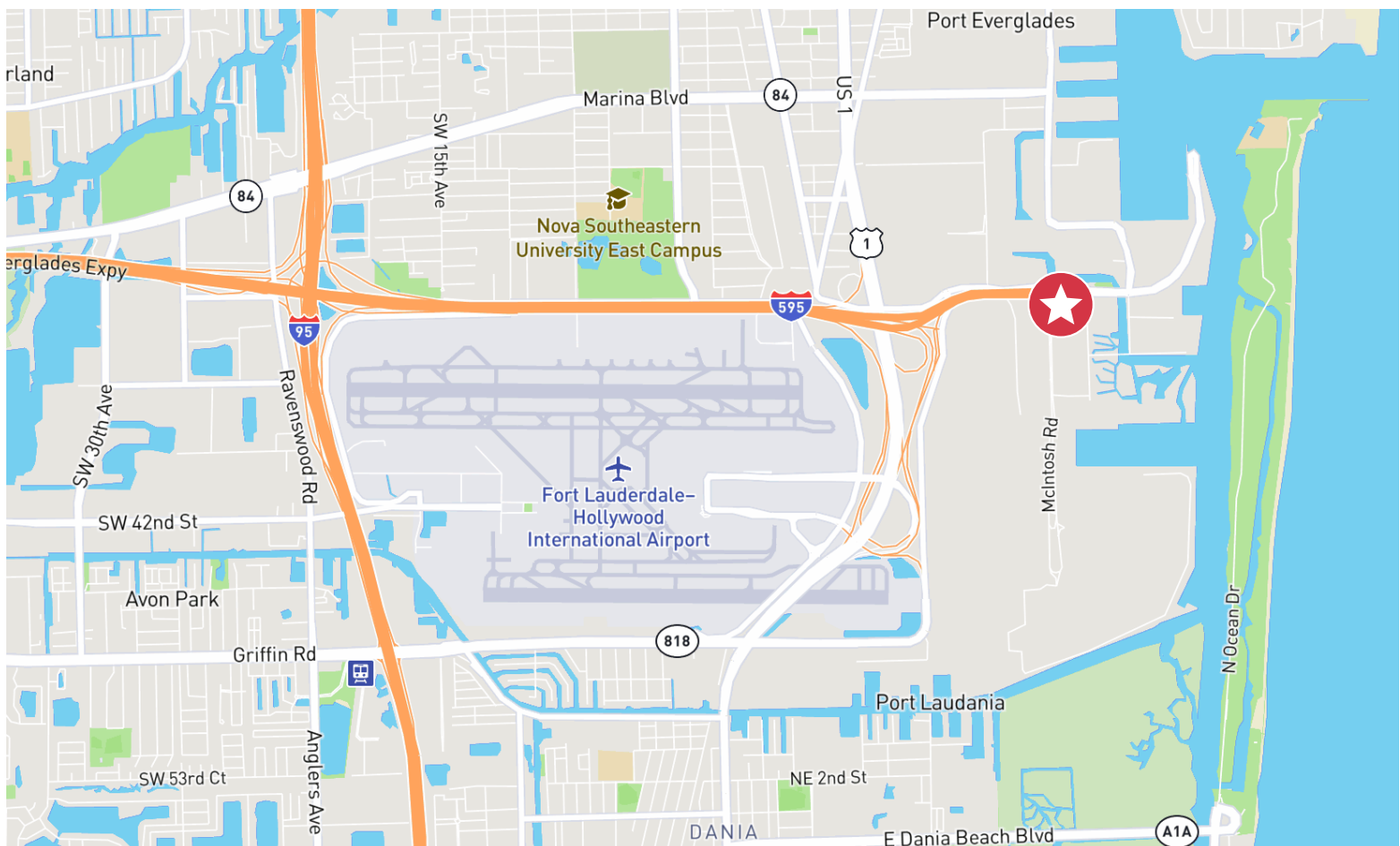
Full service cafe on site



High speed fiber ready internet



Abundance of Free Parking



1800 Eller Drive

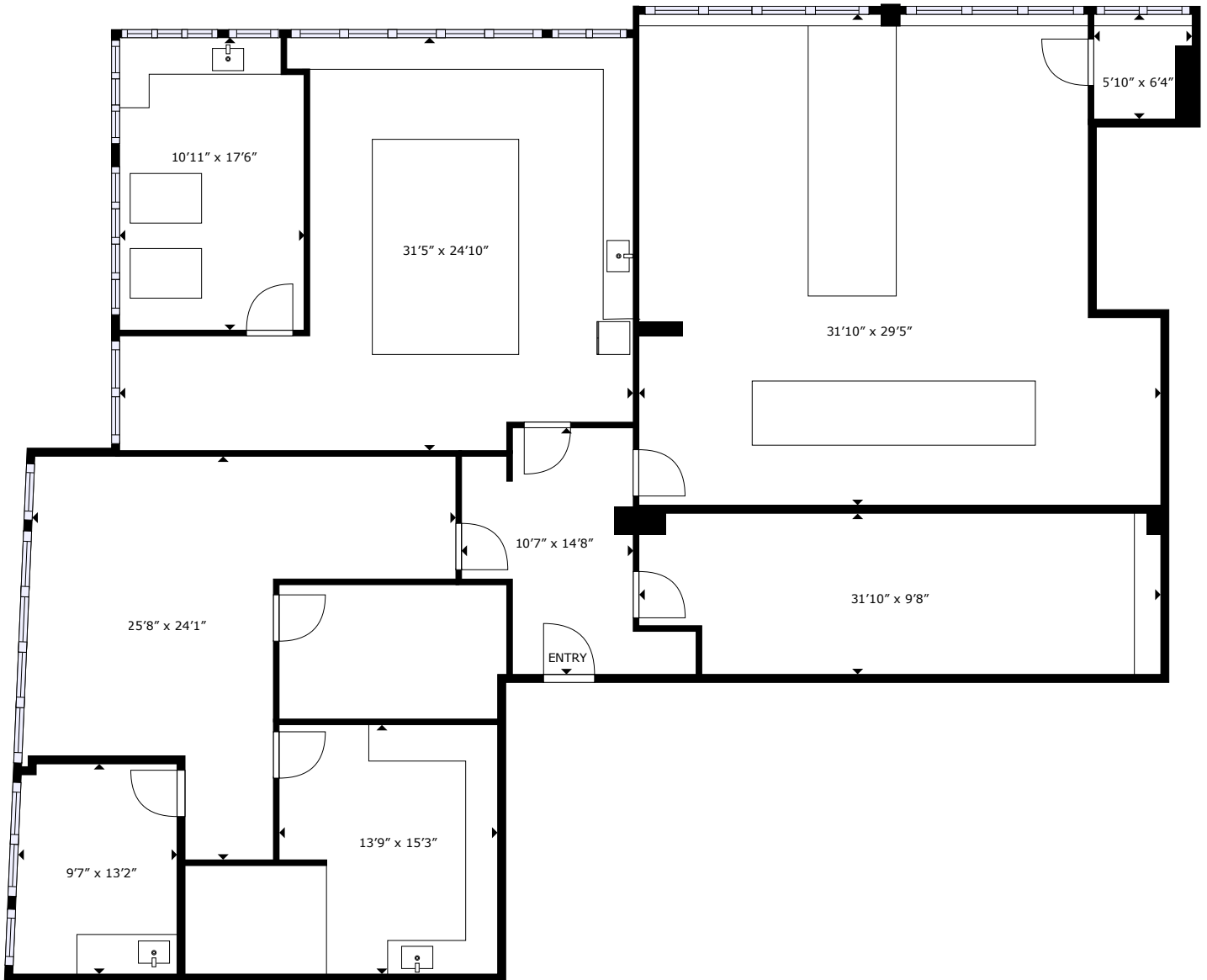
1800 Eller Drive | Fort Lauderdale, FL 33316

For Lease

Floor Plan | Suite 402

± 3,540 SF

 [CLICK TO VIEW 3D OFFICE TOUR](#)



Contact

Christopher Dubberly

First Vice President

+1 954 331 1777

christopher.dubberly@cbre.com

Jacob Sanchez

Associate

+1 305 428 5006

jacob.sanchez@cbre.com

www.cbre.com/EllerDrive

CBRE

1800 Eller Drive

1800 Eller Drive | Fort Lauderdale, FL 33316

For Lease

Suite 402 | 3,540 SF



Contact

Christopher Dubberly

First Vice President

+1 954 331 1777

christopher.dubberly@cbre.com

Jacob Sanchez

Associate

+1 305 428 5006

jacob.sanchez@cbre.com

www.cbre.com/EllerDrive

CBRE

1800 Eller Drive

1800 Eller Drive | Fort Lauderdale, FL 33316

For Lease

Floor Plan | Suite 501

± 8,280 SF



CLICK TO VIEW
3D OFFICE TOUR



Contact

Christopher Dubberly

First Vice President

+1 954 331 1777

christopher.dubberly@cbre.com

Jacob Sanchez

Associate

+1 305 428 5006

jacob.sanchez@cbre.com

www.cbre.com/EllerDrive

CBRE

1800 Eller Drive

1800 Eller Drive | Fort Lauderdale, FL 33316

For Lease

Suite 501 | 8,280 SF



Contact

Christopher Dubberly

First Vice President

+1 954 331 1777

christopher.dubberly@cbre.com

Jacob Sanchez

Associate

+1 305 428 5006

jacob.sanchez@cbre.com

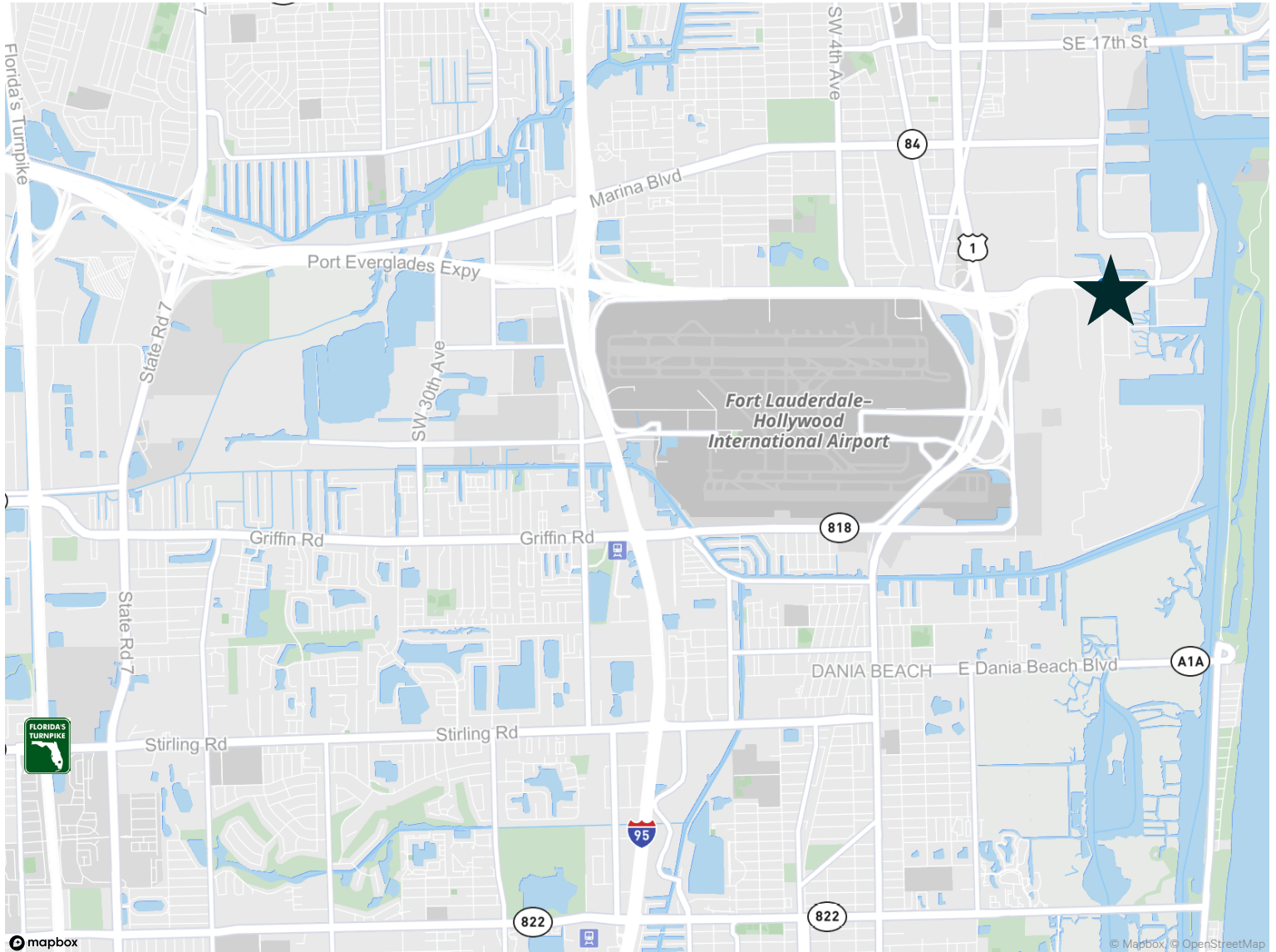
www.cbre.com/EllerDrive

CBRE

1800 Eller Drive

1800 Eller Drive | Fort Lauderdale, FL 33316

For Lease



Contact

Christopher Dubberly

First Vice President

+1 954 331 1777

christopher.dubberly@cbre.com

Jacob Sanchez

Associate

+1 305 428 5006

jacob.sanchez@cbre.com

© 2024 CBRE, Inc. All rights reserved. This information has been obtained from sources believed reliable, but has not been verified for accuracy or completeness. You should conduct a careful, independent investigation of the property and verify all information. Any reliance on this information is solely at your own risk. CBRE and the CBRE logo are service marks of CBRE, Inc. All other marks displayed on this document are the property of their respective owners, and the use of such logos does not imply any affiliation with or endorsement of CBRE. Photos herein are the property of their respective owners. Use of these images without the express written consent of the owner is prohibited.

www.cbre.com/EllerDrive

CBRE