

# FOR LEASE



## LAKEVIEW MEDICAL OFFICE PARK



### PROPERTY DETAILS



- Building Size: 179,733 RSF
- 22,102 RSF For Lease
- Highly sought-after location off 91<sup>st</sup> & Meridian Street with easy access to US 31 & I-465
- Within 5 miles of several major hospitals, including IU Health North Hospital, Ascension St. Vincent Indianapolis Hospital, Ascension St. Vincent Carmel Hospital, and Franciscan Health Carmel
- Building features an interior courtyard
- Excellent visibility with signage opportunities



### Lakeview Medical Office Park

8902-9002 N Meridian St.  
Indianapolis, IN 46260

### CONTACTS

**Charles Yeo, CCIM, CPM**  
SVP, Brokerage  
317.288.9006  
cyeo@cciin.com

**Jennifer McAllister**  
Brokerage Associate  
317.288.9022  
jmcallister@cciin.com

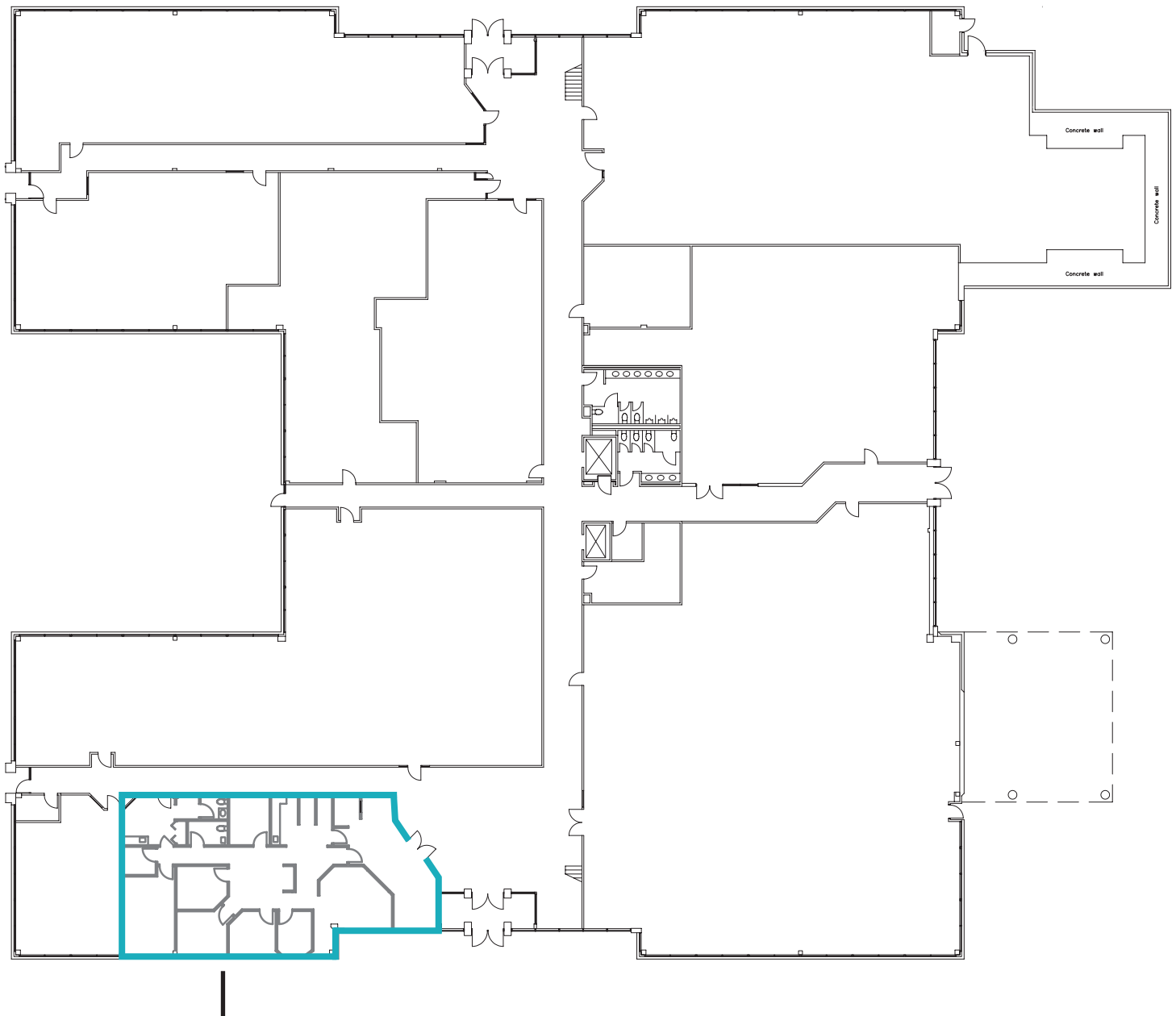




# FLOOR PLANS

Lakeview Medical Office Park  
8902-9002 N Meridian St. Indianapolis, IN

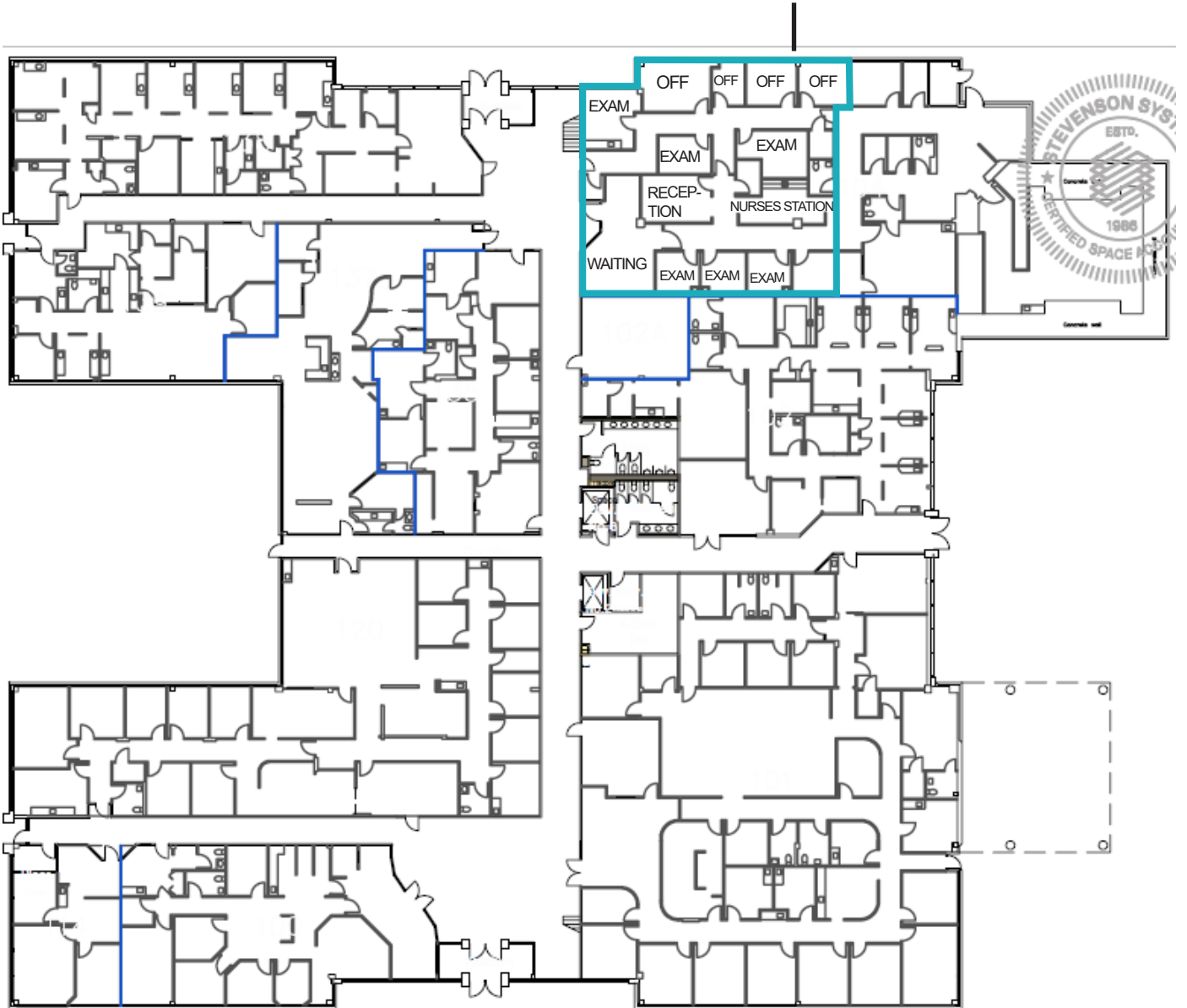
8902 N Meridian | 1<sup>st</sup> Floor



- Suite 8902-100
  - 2,873 RSF
- Turnkey medical office with high-end finishes
- Direct main lobby entrance offering visibility and easy patient access
- Available 11/1/26

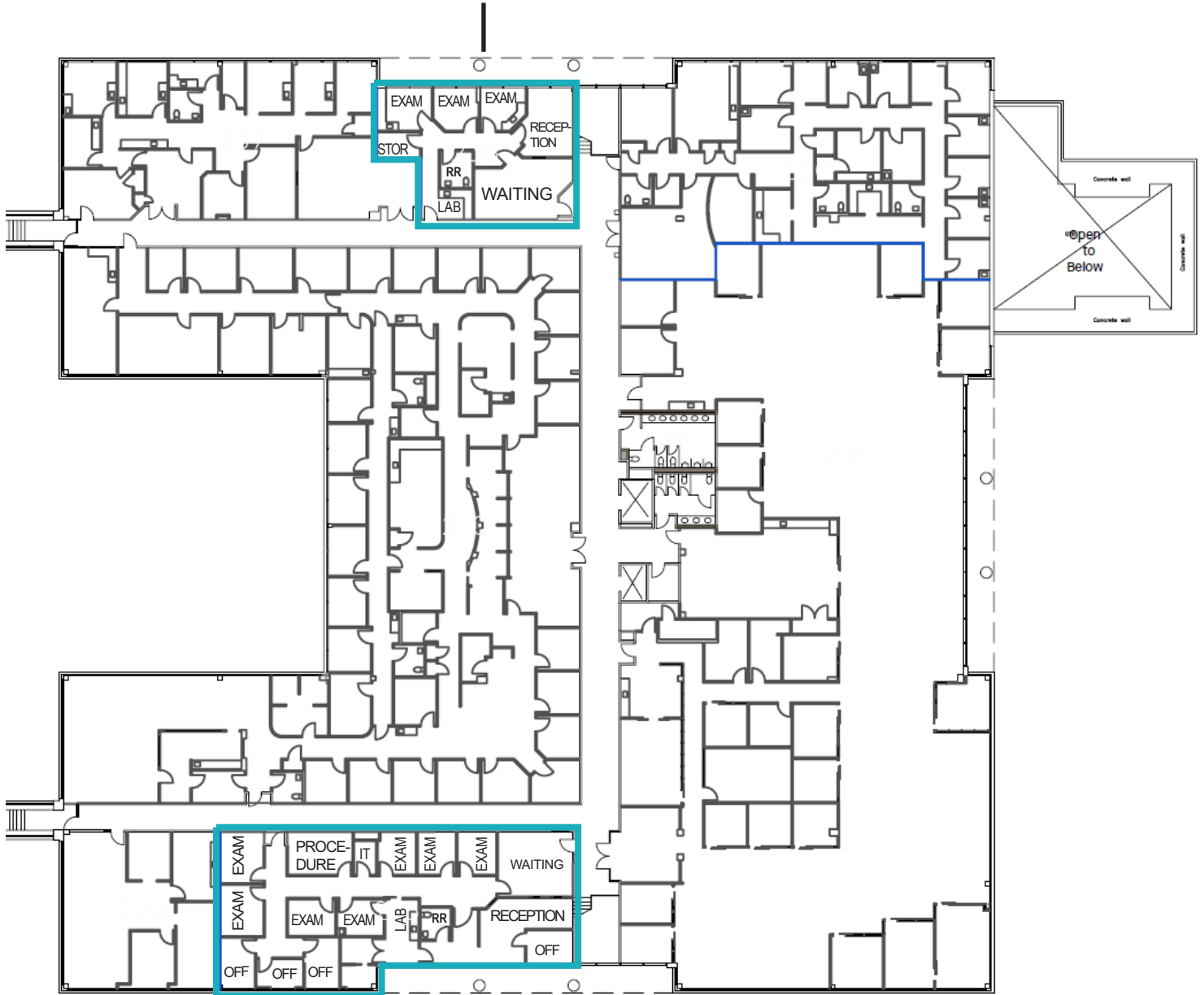
8902 N Meridian | 1<sup>st</sup> Floor

- Suite 8902-104
- 3,711 RSF



8902 N Meridian | 2<sup>nd</sup> Floor

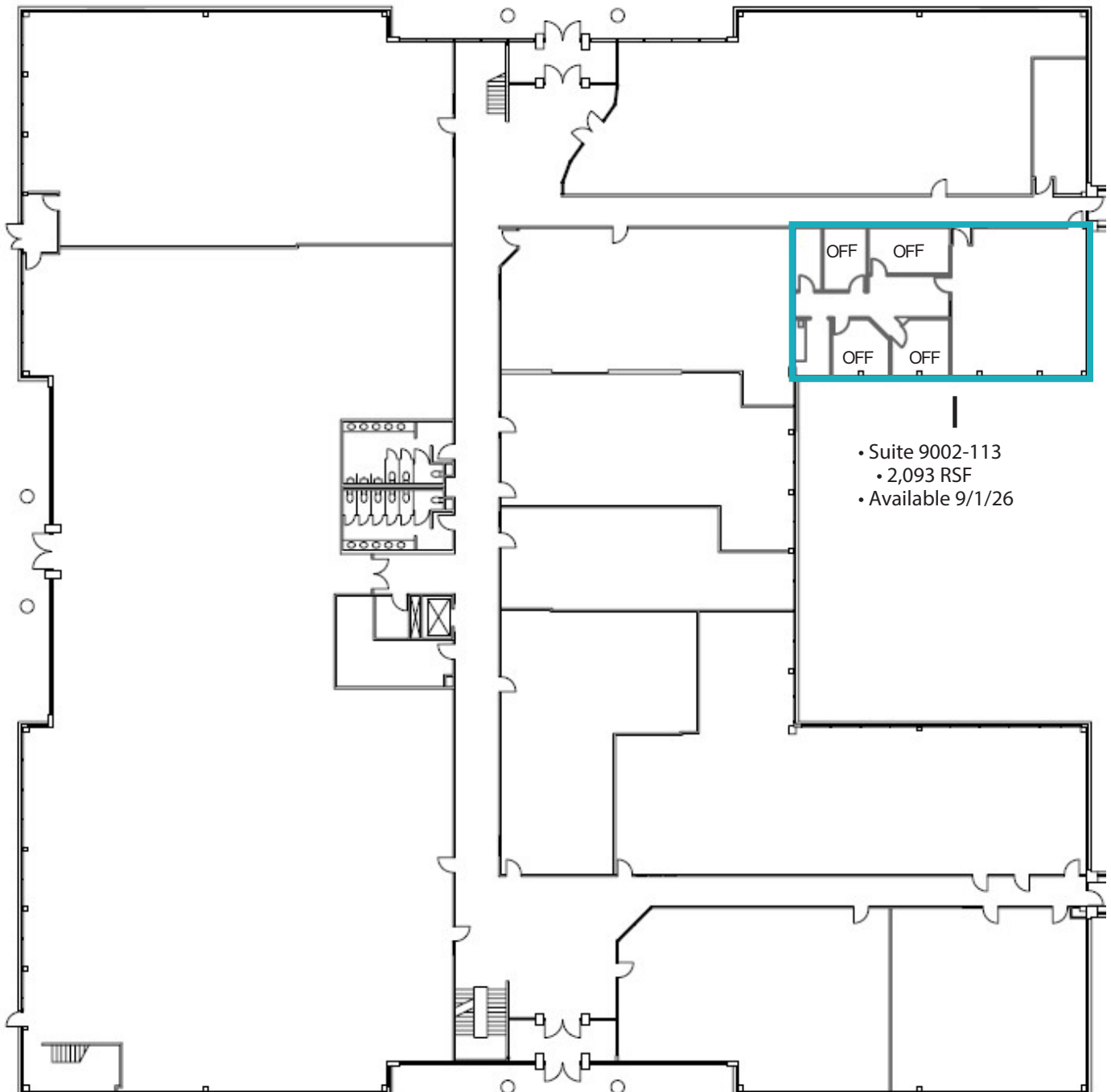
• Suite 8902-236  
• 1,524 RSF



• Suite 8902-215  
• 3,309 RSF  
• Move-in ready medical office



## 9002 N Meridian | 1<sup>st</sup> Floor







IVX HEALTH

# DEMOGRAPHICS (5 - mile radius)

181,008 Population
 38.7 Median Age

77,824 Households

\$82,092 Median Household Income

## CONTACTS

**Charles Yeo, CCIM, CPM**  
 SVP, Brokerage  
 317.288.9006  
[cyeo@cciin.com](mailto:cyeo@cciin.com)

**Jennifer McAllister**  
 Brokerage Associate  
 317.288.9022  
[jmcallister@cciin.com](mailto:jmcallister@cciin.com)

